

UNITED STATES  
DEPARTMENT OF THE INTERIOR  
GEOLOGICAL SURVEY

## APPLICATION FOR PERMIT TO DRILL, DEEPEN, OR PLUG BACK

1a. TYPE OF WORK

DRILL ☐DEEPEN ☐PLUG BACK ☐

b. TYPE OF WELL

OIL  
WELL ☐GAS  
WELL ☒

OTHER

New Well

SINGLE  
ZONE ☐MULTIPLE  
ZONE ☒

2. NAME OF OPERATOR

Consolidated Oil &amp; Gas, Inc.

3. ADDRESS OF OPERATOR

1860 Lincoln St., Denver, Colo. 80295

4. LOCATION OF WELL (Report location clearly and in accordance with any State requirements.)\*  
AT SURFACE

790' FNL &amp; 790' FEL

At proposed prod. zone  
Same

14. DISTANCE IN MILES AND DIRECTION FROM NEAREST TOWN OR POST OFFICE\*

30 miles Northwest Lindrith, New Mexico

15. DISTANCE FROM PROPOSED\*

LOCATION TO NEAREST

PROPERTY OR LEASE LINE, FT.

(Also to nearest drlg. unit line, if any.)

790'

16. NO. OF ACRES IN LEASE

2561.86

17. NO. OF ACRES ASSIGNED  
TO THIS WELL

160

18. DISTANCE FROM PROPOSED LOCATION\*  
TO NEAREST WELL, DRILLING, COMPLETED,  
OR APPLIED FOR, ON THIS LEASE, FT.

1249

19. PROPOSED DEPTH

Drilled to 6150'

20. ROTARY OR CABLE TOOLS

Drilled by Rotary 7-3-77

21. ELEVATIONS (Show whether DF, RT, GR, etc.)

7090' Gr.

22. APPROX. DATE WORK WILL START\*

Spud: 6-24-77

23. PROPOSED CASING AND CEMENTING PROGRAM

SIZE OF HOLE	SIZE OF CASING	WEIGHT PER FOOT	SETTING DEPTH	QUANTITY OF CEMENT
15"	10 3/4"	40.5	292' K.B.	300 sx - circ
8 3/4"	7"	23.0	4100' K.B.	225 sx-Top Cement-3000' by temp.sur.
6 1/4"	4 1/2" Liner	10.5	Top - 3996' Btm - 6150'	210 sx

1. Consolidated Oil & Gas proposes to dually complete their Jicarilla "C" 1A in the Tapacito Pictured Cliffs & the Blanco Mesa Verde formation.
2. The Blanco Mesa Verde formation is completed as the in-fill well in this 1/2 section.
3. The Pictured Cliffs well will replace an existing well (Lowe #1) on the 160 acres that has mechanical problems and will be P&A.
4. There will be no additional surface disturbances created by this completion.
5. The above formation (spud date - csg. & cement) is correct.
6. The Pictured Cliffs will be selectively perforated & stimulated.

IN ABOVE SPACE DESCRIBE PROPOSED PROGRAM: If proposal is to deepen or plug back, give data on present productive zone and proposed new productive zone. If proposal is to drill or deepen directionally, give pertinent data on subsurface locations and measured and true vertical depths. Give blowout preventer program, if any.

24.

SIGNED

TITLE

Sr. Drlg. Engr.

DATE

9-29-77

(This space for Federal or State office use)

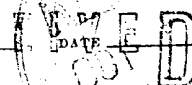
PERMIT NO.

APPROVAL DATE

APPROVED BY

TITLE

CONDITIONS OF APPROVAL, IF ANY:



DURANGO OFFICE COPY

**NEW MEXICO OIL CONSERVATION COMMISSION  
WELL LOCATION AND ACERAGE DEDICATION PLAT**

All distances must be from the outer boundaries of the Section

Operator <b>CONSOLIDATED OIL AND GAS, INC.</b>		Lease <b>JICARILLA T &amp; A C</b>		Well No. <b>1A-11</b>
Unit Letter <b>A</b>	Section <b>11</b>	Township <b>26 NORTH</b>	Range <b>4 WEST</b>	County <b>RIO ARriba</b>
Actual Footage Location of Well: <b>790</b> feet from the <b>NORTH</b> line and <b>790</b> feet from the <b>EAST</b> line				
Ground Level Elev. <b>7090</b>	Producing Formation <b>Pictured Cliffs Mesa Verde</b>	Pool <b>Tapacito Blanco</b>	Dedicated Acreage: <b>160</b> <b>320</b> Acres	

1. Outline the acreage dedicated to the subject well by colored pencil or hachure marks on the plat below.
2. If more than one lease is dedicated to the well, outline each and identify the ownership thereof (both as to working interest and royalty).
3. If more than one lease of different ownership is dedicated to the well, have the interests of all owners been consolidated by communitization, unitization, force-pooling, etc?  
☐ Yes   ☐ No   If answer is "yes," type of consolidation \_\_\_\_\_  
 If answer is "no," list the owners and tract descriptions which have actually consolidated. (Use reverse side of this form if necessary.) \_\_\_\_\_  
 No allowable will be assigned to the well until all interests have been consolidated (by communitization, unitization, forced-pooling, or otherwise) or until a non standard unit, eliminating such interests, has been approved by the Commission.

**CERTIFICATION**

I hereby certify that the information contained herein is true and complete to the best of my knowledge and belief.

*O.B. Whitenburg*  
**O.B. Whitenburg**

Name

**Sr. Drilling Engineer**

Position

**Consolidated Oil & Gas, Inc.**

Company

**9-29-77**

Date

I hereby certify that the well location shown on this plat was plotted from field notes of actual surveys made by me or under my supervision, and that the same is true and correct to the best of my knowledge and belief.

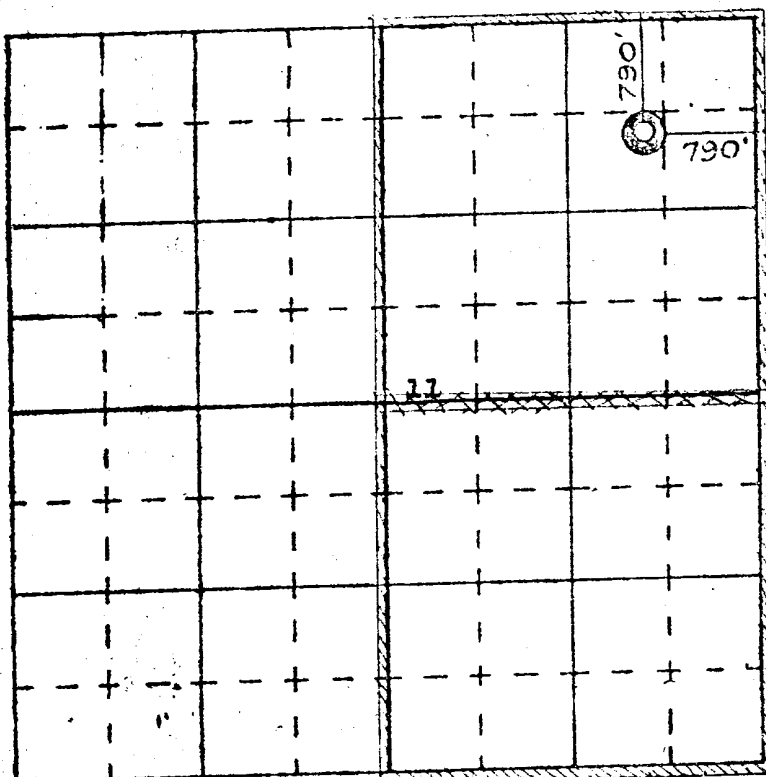
**23 February 1977**

Date Surveyed

*James P. Leese*  
**James P. Leese**

Registered Professional Engineer

and/or Land Surveyor **James P. Leese**

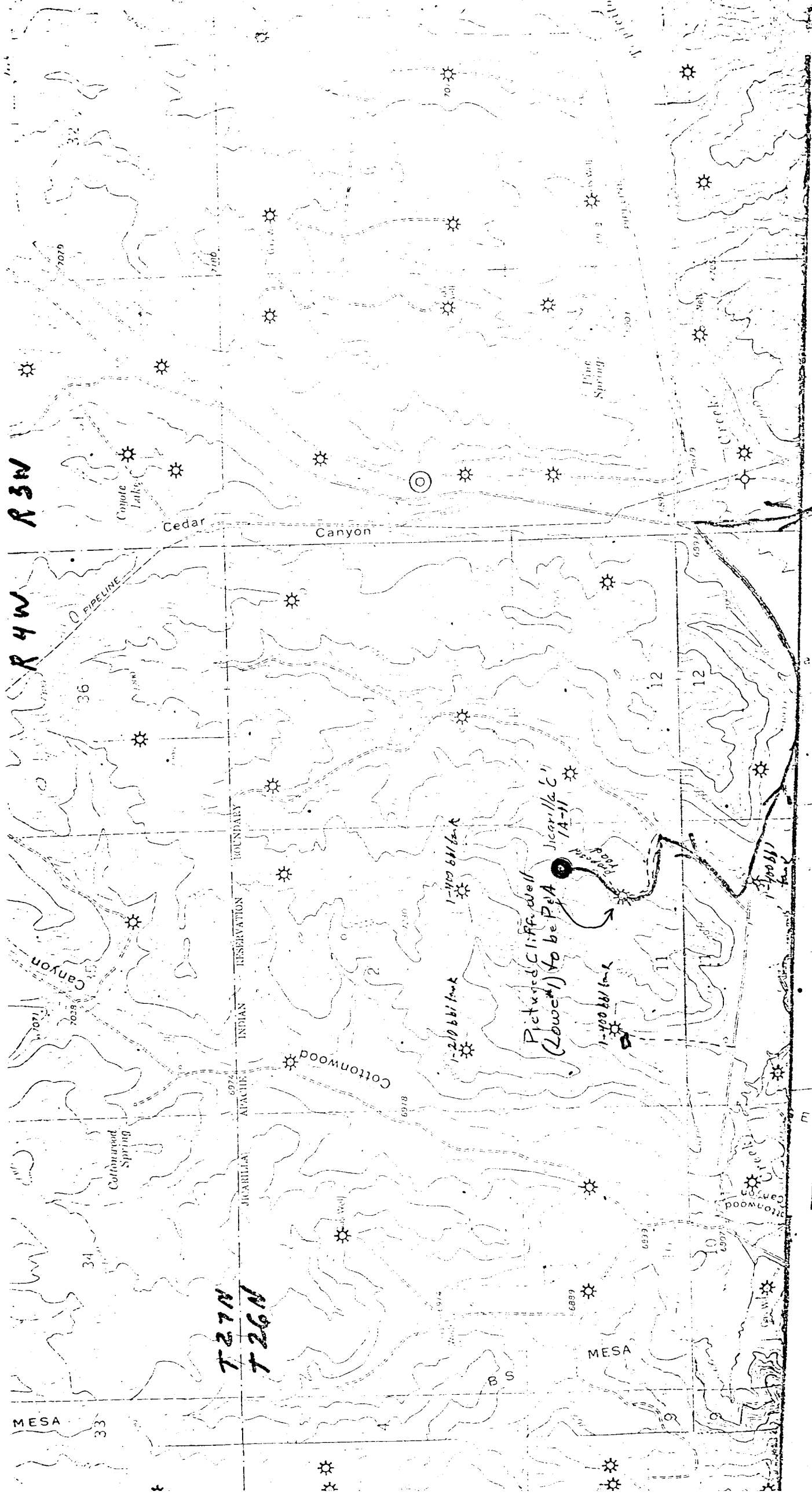


SCALE-4 INCHES EQUALS 1 MILE

**SAN JUAN ENGINEERING COMPANY, FARMINGTON, N. M.**

**1463**

Certificate No.



28 miles  
to Linderoth

Exhibit 1