

DEPUTY OIL & GAS INSPECTOR

FEB 26 1998

JICARILLA APACHE TRIBE

ENVIRONMENTAL PROTECTION OFFICE

P.O. BOX 507
DULCE, NEW MEXICO 87528

SUBMIT 1 COPY TO
NATURAL
RESOURCE DEPT
AND OIL GAS
ADMINISTRATION

Approved **PIT**

PIT REMEDIATION AND CLOSURE REPORT

Operator: PNM Gas Services (Ameco) Telephone: 324-3764

Address: 603 W. Elm Street Farmington, NM 87401

Facility or Well Name: Jicarilla Apache 102-23

Location: Unit: D Sec. 3 T. 26 N R. 4 W County Rio Arriba

Pit Type: Separator ☒ Dehydrator ☐ Other ☐

Land Type: Jicarilla Apache

Pit Location: Pit dimensions: length 32' width 26' depth 8'
(Attach diagram) Reference: wellhead X other _____
Footage from reference: 99'
Direction from reference: Straight Degrees _____ East _____ North X
West _____ of South _____

Depth to Ground Water: (Vertical distance from contaminants to seasonal high water elevation of ground water)	<div>RECEIVED NOV - 3 1997</div>	Less than 50 feet 50 feet to 99 feet Greater than 100 feet	(20 points) (10 points) (0 points)	0 0 0
Wellhead Protection Area: (Less than 200 feet from a private domestic water source, or; less than 1,000 feet from all other water sources)		Yes No	(20 points) (0 points)	0 0
Distance to Surface Water: (Horizontal distance to perennial lakes, ponds, rivers, streams, creeks, irrigation canals and ditches)	<div>OIL CON. DIV. DIST. 3</div>	Less than 200 feet 200 feet to 1,000 feet Greater than 1,000 feet	(20 points) (10 points) (0 points)	0 0 0
Distance to Ephemeral Stream (dry wash): (Horizontal distance to all downgradient streams having a width of at least 10 feet)		Less than or equal to 100 feet Greater than 100 feet	(10 points) (0 points)	0 0
Distance to Nearest Lake, Playa, or Watering Pond: (Horizontal distance to all downgradient lakes, playas, and livestock or wildlife water ponds)		Less than or equal to 100 feet Greater than 100 feet	(10 points) (0 points)	0 0

RANKING SCORE (TOTAL POINTS) :

Date Remediation Started: 7/17/97 Date Completed: 9/3/97

Remediation Method: Excavation X Approx. Cubic Yards 247

(Check all appropriate sections)

Landfarmed X Amount Landfarmed (cubic yds): 247

Other _____

Remediation Location: Onsite X Offsite _____

(i.e., landfarmed onsite, name and location of offsite facility)

General Description of Remedial Action:

Removed contaminated soil from all four side walls
as to get it below 100 ppm head space readings.
Bottom is rock.

Ground Water Encountered: No X Yes _____ Depth _____

Final Pit Closure Sampling:

Sample Location North, East, South, and
West side walls

(if multiple samples, attach sample result and diagram of sample locations and depths.)

Sample depth 7'

Sample date 7/17/97 Sample time 1049

Sample Results

Soil: Benzene (ppm) ND Water: Benzene (ppb) _____

Total BTEX (ppm) 0.010 Toluene (ppb) _____

Field headspace (ppm) 62.6 Ethylbenzene (ppb) _____

TPH ND ppm Method 8015 Total Xylenes (ppb) _____

Ground Water Sample: Yes _____ No X (If yes, attach sample results)

I HEREBY CERTIFY THAT THE INFORMATION ABOVE IS TRUE AND COMPLETE TO THE BEST OF MY KNOWLEDGE AND MY BELIEF

DATE 7/24/97 PRINTED NAME Ronald A. Dedrick

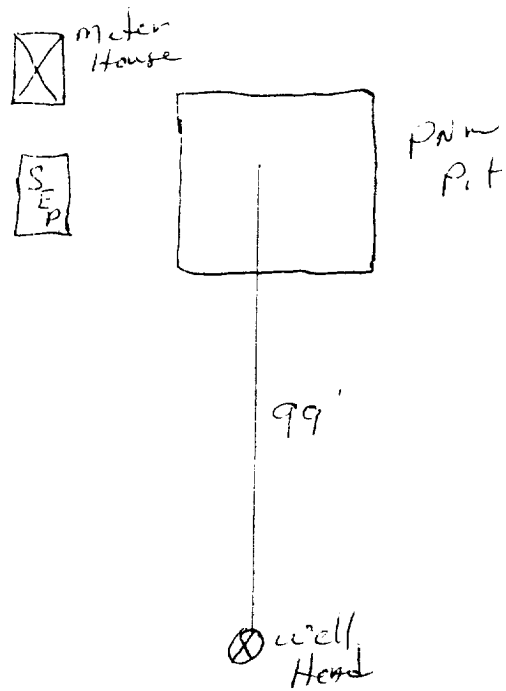
SIGNATURE Ronald A. Dedrick AND TITLE Environmental Technician II

AFTER REVIEW OF THE PIT CLOSURE INFORMATION, PIT CLOSURE IS APPROVED IN ACCORDANCE TO JICARILLA APACHE TRIBE PIT CLOSURE ORDINANCE.

APPROVED: YES X NO _____ (REASON): spray + close

SIGNED: Kerr C. Mamm DATE: 7-29-97

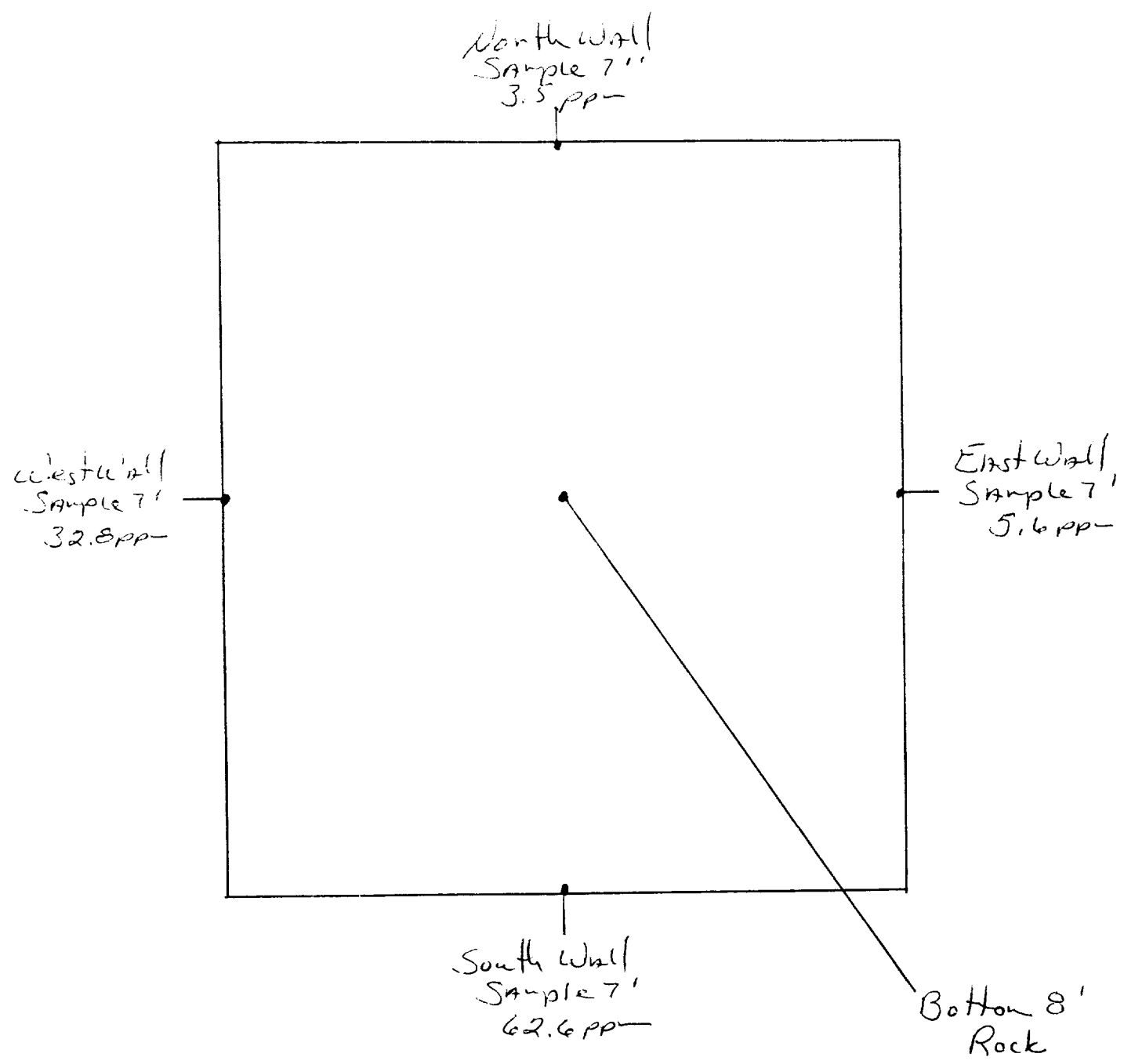
Sec. 3 T26N R4W Unit D
Amoco



300
541
TK

Sec 3 T24N R4W Unit D
Amoco

32' x 26' x 8'



5' Sample - 777 ppm

OFF: (505) 325-5667



LAB: (505) 325-1556

ANALYTICAL REPORT

Attn: *Denver Bearden*
Company: *PNM Gas Services*
Address: *603 W. Elm*
City, State: *Farmington, NM 87401*

Date: *24-Jul-97*
COC No.: *5518*
Sample No.: *15388*
Job No.: *2-1000*

Project Name: *PNM Gas Services - Jicarilla Apache 102-23*
Project Location: *9707171049; 4pt. Composite*
Sampled by: *TN* Date: *17-Jul-97* Time: *10:49*
Analyzed by: *DC* Date: *23-Jul-97*
Sample Matrix: *Soil*

Laboratory Analysis

Parameter	Results as Received	Unit of Measure	Limit of Quantitation	Unit of Measure
<i>Diesel Range Organics (C10 - C28)</i>	ND	mg/kg	5	mg/kg

ND - Not Detected at Limit of Quantitation

Quality Assurance Report

DRO QC No.: 0548-STD

Continuing Calibration Verification

Parameter	Method Blank	Unit of Measure	True Value	Analyzed Value	RPD	RPD Limit
<i>Diesel Range (C10 - C28)</i>	ND	ppm	200	197	1.6	15%

Matrix Spike

Parameter	1 - Percent Recovered	2 - Percent Recovered	Limit	RPD	RPD Limit
<i>Diesel Range (C10-C28)</i>	89	87	(70-130)	2	20%

Method - SW-846 EPA Method 8015A mod. - Nonhalogenated Volatile Hydrocarbons by Gas Chromatography

Approved by:

Date:

DC
7/24/97

P.O. BOX 2606 • FARMINGTON, NM 87499

- TECHNOLOGY BLENDING INDUSTRY WITH THE ENVIRONMENT -

OFF: (505) 325-5667



LAB: (505) 325-1556

ANALYTICAL REPORT

Attn: *Denver Bearden*
Company: *PNM Gas Services*
Address: *603 W. Elm*
City, State: *Farmington, NM 87401*

Date: *24-Jul-97*
COC No.: *5518*
Sample No.: *15388*
Job No.: *2-1000*

Project Name: ***PNM Gas Services - Jicarilla Apache 102-23***

Project Location: ***9707171049; 4pt. Composite***

Sampled by: *TN* Date: *17-Jul-97* Time: *10:49*

Analyzed by: *DC* Date: *22-Jul-97*

Sample Matrix: *Soil*

Laboratory Analysis

Parameter	Results as Received	Unit of Measure	Limit of Quantitation	Unit of Measure
<i>Benzene</i>	ND	ug/kg	1	ug/kg
<i>Toluene</i>	2	ug/kg	1	ug/kg
<i>Ethylbenzene</i>	4	ug/kg	1	ug/kg
<i>m,p-Xylene</i>	4	ug/kg	1	ug/kg
<i>o-Xylene</i>	ND	ug/kg	1	ug/kg
<i>TOTAL</i>	10	ug/kg		

ND - Not Detected at Limit of Quantitation

Method - SW-846 EPA Method 8020A Aromatic Volatile Organics by Gas Chromatography

Approved by: *[Signature]*
Date: *7/24/97*

P.O. BOX 2606 • FARMINGTON, NM 87499

- TECHNOLOGY BRIDGING INDUSTRY WITH THE ENVIRONMENT -

JICARILLA APACHE TRIBE
ENVIRONMENTAL
PROTECTION OFFICE
P.O. BOX 507
DULCE, NEW MEXICO 87528

SUBMIT 1 COPY TO
NATURAL
RESOURCE DEPT
AND OIL GAS
ADMINISTRATION

ON-SITE SOIL REMEDIATION REPORT

Operator: PNM Gas Services (Amoco) Telephone: 324-3764
Address: 603 W. Elm Street Farmington, NM 87401
Facility or Well Name: Jicarilla Apache 102-23
Location: Unit: D Sec. 3 T. 26 N R. 4 W County Rio Arriba
Land Type: Jicarilla Apache

Date Remediation Started: 7/17/97 Date Completed: 8/11/97
Remediation Method: Landfarmed X Approx. cubic yards 247
Composted
Other

Depth to Ground Water: (pts.) 0
Distance to an Ephemeral Stream: (pts.) 0
Distance to Nearest Lake, Playa,
or Watering Pond: (pts.) 0
Wellhead Protection Area: (pts.) 0
Distance to Surface Water: (pts.) 0
Ranking Score (Total Points): 0

Final Closure Sampling:

Sampling Date: 8/7/97 Time 0830
Sampling Results:
Field Headspace (ppm) 11.2
TPH (ppm) 10 Method 8015
Other

I HEREBY CERTIFY THAT THE INFORMATION ABOVE IS TRUE AND COMPLETE TO THE BEST OF MY KNOWLEDGE AND BELIEF

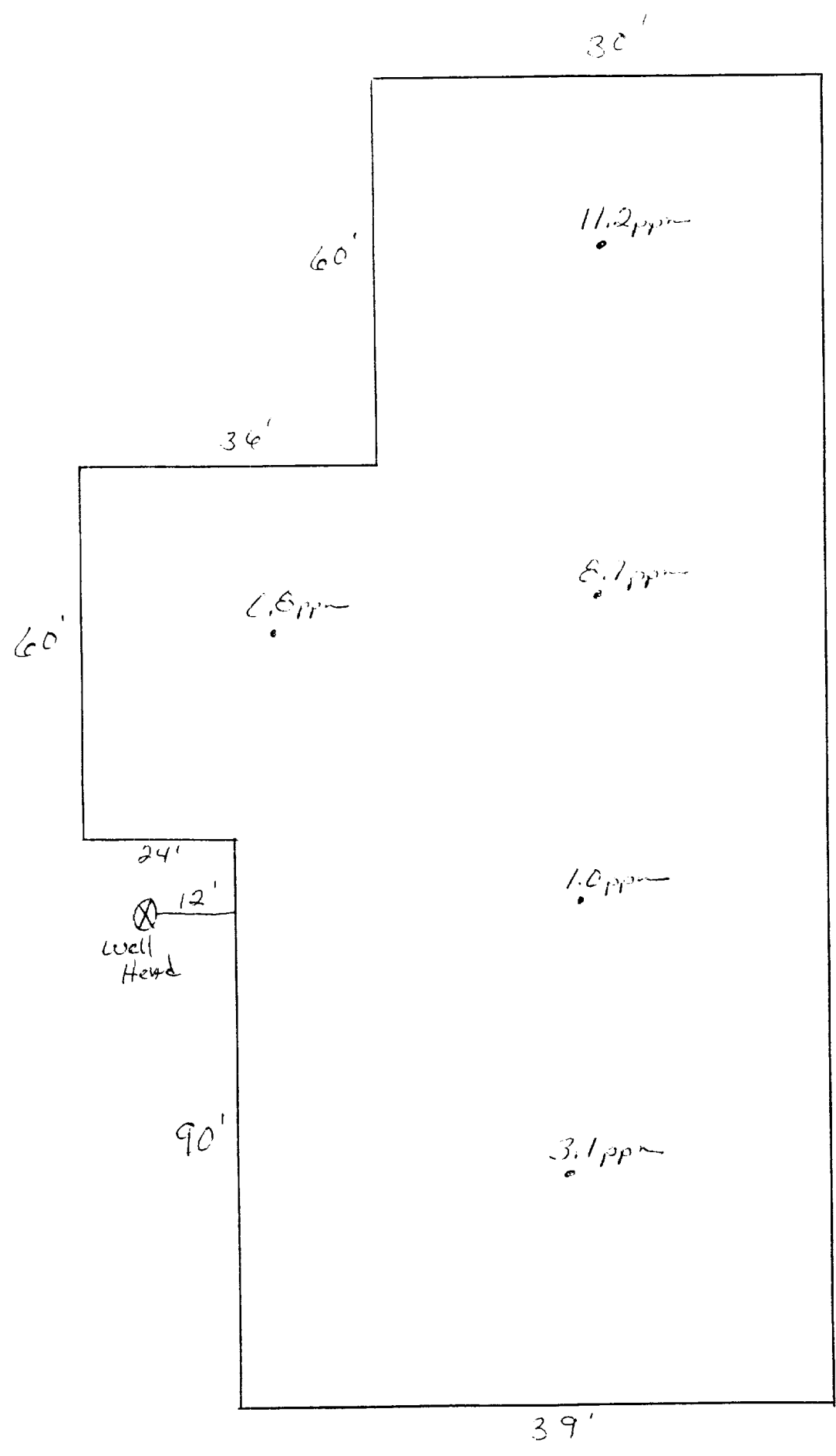
DATE 8/15/97 PRINTED NAME Ronald A. Dedrick
SIGNATURE Ronald A. Dedrick AND TITLE Environmental Technician II

AFTER REVIEW OF THE SOIL REMEDIATION INFORMATION, ON-SITE REMEDIATION APPROVED IN ACCORDANCE TO THE
JICARILLA APACHE TRIBE PIT CLOSURE ORDINANCE

APPROVED: YES X NO (REASON) use as Backfill
SIGNED: Joe C. Mammall DATE: 8-18-97

JICARILLA HYDRO 100-20
Sec. 3 T26N R4W Unit D
Hmoco

Land farm



OFF: (505) 325-5667



LAB: (505) 325-1556

ANALYTICAL REPORT

Attn: *Denver Bearden*
Company: *PNM Gas Services*
Address: *603 W. Elm*
City, State: *Farmington, NM 87401*

Date: *13-Aug-97*
COC No.: *5543*
Sample No.: *15700*
Job No.: *2-1000*

Project Name: *PNM Gas Services - Jicarilla Apache 102-23 Landfarm*
Project Location: *9708070830; 5pt. Composite*
Sampled by: *SA* Date: *7-Aug-97* Time: *8:30*
Analyzed by: *HR/DC* Date: *11-Aug-97*
Sample Matrix: *Soil*

Laboratory Analysis

Parameter	Results as Received	Unit of Measure	Limit of Quantitation	Unit of Measure
<i>Diesel Range Organics (C10 - C28)</i>	ND	mg/kg	5	mg/kg

ND - Not Detected at Limit of Quantitation

Quality Assurance Report

DRO QC No.: 0548-STD

Continuing Calibration Verification

Parameter	Method Blank	Unit of Measure	True Value	Analyzed Value	RPD	RPD Limit
<i>Diesel Range (C10 - C28)</i>	ND	ppm	200	215	7.4	15%

Matrix Spike

Parameter	1- Percent Recovered	2 - Percent Recovered	Limit	RPD	RPD Limit
<i>Diesel Range (C10-C28)</i>	84	85	(70-130)	1	20%

Method - SW-846 EPA Method 8015A mod. - Nonhalogenated Volatile Hydrocarbons by Gas Chromatography

Approved by: *[Signature]*
Date: *8/13/97*

P.O. BOX 2606 • FARMINGTON, NM 87499

- TECHNOLOGY BLENDING INDUSTRY WITH THE ENVIRONMENT -