

UNITED STATES
DEPARTMENT OF THE INTERIOR
GEOLOGICAL SURVEY30-039-21513
5. LEASE DESIGNATION AND SERIAL NO.

Contract 105

6. IF INDIAN, ALLOTTEE OR TRIBE NAME

Jicarilla Apache

7. UNIT AGREEMENT NAME

8. FARM OR LEASE NAME

Jenny

9. WELL NO.

1A

10. FIELD AND POOL, OR WILDCAT

Blanco Mesaverde

11. SEC. T., R., M., OR BLK.
AND SURVEY OR AREA

Sec. 13, T26N, R4W, NMPM

12. COUNTY OR PARISH

Rio Arriba

13. STATE
New Mexico

APPLICATION FOR PERMIT TO DRILL, DEEPEN, OR PLUG BACK

1a. TYPE OF WORK

DRILL ☒DEEPEN ☐PLUG BACK ☐

b. TYPE OF WELL

OIL
WELL ☐GAS
WELL ☒

OTHER

SINGLE
ZONE ☐MULTIPLE
ZONE ☒

2. NAME OF OPERATOR

Consolidated Oil & Gas, Inc.

3. ADDRESS OF OPERATOR

1860 Lincoln Street, Denver, Colorado 80295

4. LOCATION OF WELL (Report location clearly and in accordance with any State requirements.)
At surface

990' FSL & 790' FEL

At proposed prod. zone

Same

14. DISTANCE IN MILES AND DIRECTION FROM NEAREST TOWN OR POST OFFICE*

30 miles northwest of Lindrith

15. DISTANCE FROM PROPOSED*

LOCATION TO NEAREST
PROPERTY OR LEASE LINE, FT.
(Also to nearest drlg. unit line, if any)

790'

16. NO. OF ACRES IN LEASE

2560'

17. NO. OF ACRES ASSIGNED
TO THIS WELL

320

18. DISTANCE FROM PROPOSED LOCATION*

TO NEAREST WELL, DRILLING, COMPLETED,
OR APPLIED FOR, ON THIS LEASE, FT.

3645'

19. PROPOSED DEPTH

8100'

20. ROTARY OR CABLE TOOLS

Rotary

21. ELEVATIONS (Show whether DF, RT, GR, etc.)

7085' Gr.

22. APPROX. DATE WORK WILL START*

January 15, 1978

23.

PROPOSED CASING AND CEMENTING PROGRAM

| SIZE OF HOLE | SIZE OF CASING | WEIGHT PER FOOT | SETTING DEPTH | QUANTITY OF CEMENT |
|--------------|----------------|-----------------|---------------|-------------------------|
| 15" | 10-3/4" | 40.5# | 300 | Circ. (approx. 250 sx.) |
| 9-7/8" | 7-5/8" | 26.4# | 4050' | Circ. (approx. 200 sx.) |
| 6-3/4" | 5-1/2" | 15.5# | 8100' | Approx. 300 sx. |

1. Drill 15" hole to 300'. Set 10-3/4" casing. Circulate cement to surface.
2. WOC 12 hrs.
3. Install blowout preventers. Pressure test surface casing and blowout preventer to 600 psi.
4. Drill 9-7/8" hole to approximately 300' below top of Pictured Cliff or to approximately 4050' with fresh water gel mud. Run 7-5/8" casing and cement with approximately 200 sx. WOC 12 hrs.
5. Air or gas drill 6-3/4" hole to 8100'. Log
6. Set 5-1/2" casing with approximately 250 sx.
7. Selectively perforate and stimulate the Mesaverde and complete as required by rules and regulations.

Gas is dedicated

IN ABOVE SPACE DESCRIBE PROPOSED PROGRAM: If proposal is to deepen or plug back, give data on present productive zone and proposed new productive zone. If proposal is to drill or deepen directionally, give pertinent data on subsurface locations and measured and true vertical depths. Give blowout preventer program, if any.

24.

SIGNED

O.B. Whitenburg
O.B. Whitenburg

TITLE

Sr. Drilling Engineer

DATE

10/6/77

(This space for Federal or State office use)

PERMIT NO.

APPROVAL DATE

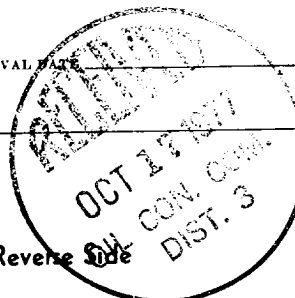
APPROVED BY

TITLE

DATE

CONDITIONS OF APPROVAL, IF ANY:

*See Instructions On Reverse Side



NEW MEXICO OIL CONSERVATION COMMISSION

WELL LOCATION AND ACERAGE DEDICATION PLAT

All distances must be from the outer boundaries of the Section

| | | | | | |
|---|----------------------|-----------------------------|------------------------|-----------------------------|--------------------------|
| Operator CONSOLIDATED OIL AND GAS, INC. | | | Lease JENNY | | Well No. 1 - A |
| Unit Letter P | Section 13 | Township 26 NORTH | Range 4 WEST | County RIO ARriba | |

Actual Footage Location of Well:

| | | | | | | | |
|-----|---------------|-------|----------|-----|---------------|------|------|
| 990 | feet from the | SOUTH | line and | 790 | feet from the | EAST | line |
|-----|---------------|-------|----------|-----|---------------|------|------|

| | | | | |
|-----------------------------------|--|---------------------------------|---------------------------------|-------|
| Ground Level Elev. 7085 | Producing Formation Mesaverde-Gallup | Pool Blanco Mesaverde | Dedicated Acreage 320 | Acres |
|-----------------------------------|--|---------------------------------|---------------------------------|-------|

1. Outline the acreage dedicated to the subject well by colored pencil or hatchure marks on the plat below.
2. If more than one lease is dedicated to the well, outline each and identify the ownership thereof (both as to working interest and royalty).
3. If more than one lease of different ownership is dedicated to the well, have the interests of all owners been consolidated by communitization, unitization, force-pooling, etc?

() Yes () No If answer is "yes," type of consolidation

If answer is "no," list the owners and tract descriptions which have actually consolidated. (Use reverse side of this form if necessary.)

No allowable will be assigned to the well until all interests have been consolidated (by communitization, unitization, forced-pooling, or otherwise) or until a non standard unit, eliminating such interests, has been approved by the Commission.

CERTIFICATION

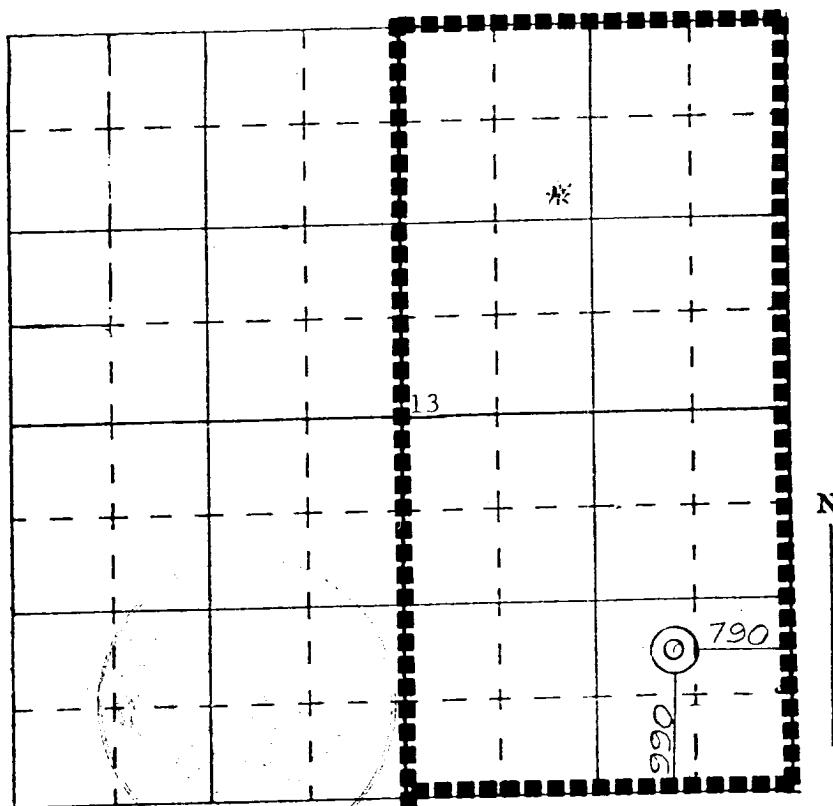
I hereby certify that the information contained herein is true and complete to the best of my knowledge and belief.

O.B. Whitenburg
 Name
O.B. Whitenburg
 Position
Sr. Drilling Engineer
 Company
Consolidated Oil & Gas
 Date
10/6/77

I hereby certify that the well location shown on this plat was plotted from field notes of actual surveys made by me or under my supervision, and that the same is true and correct to the best of my knowledge and belief.

14 September 1977

Date Surveyed
James P. Leese
 Registered Professional Engineer
 and/or Land Surveyor **James P. Leese**



SCALE—4 INCHES EQUALS 1 MILE