

UNITED STATES
DEPARTMENT OF THE INTERIOR
GEOLOGICAL SURVEY

APPLICATION FOR PERMIT TO DRILL, DEEPEN, OR PLUG BACK

1a. TYPE OF WORK

DRILL ☒DEEPEN ☐PLUG BACK ☐

b. TYPE OF WELL

OIL
WELL ☐GAS
WELL ☒

OTHER

SINGLE
ZONE ☒MULTIPLE
ZONE ☐

2. NAME OF OPERATOR

SUPRON ENERGY CORPORATION

3. ADDRESS OF OPERATOR

P. O. Box 806, Farmington, New Mexico 87401

4. LOCATION OF WELL (Report location clearly and in accordance with any State requirements.)*

At surface

790 feet from the North line and 1450 feet from the East line.

At proposed prod. zone Same as above.

14. DISTANCE IN MILES AND DIRECTION FROM NEAREST TOWN OR POST OFFICE*

12 Miles Northwest of Ojito, New Mexico

15. DISTANCE FROM PROPOSED LOCATION TO NEAREST PROPERTY OR LEASE LINE, FT. (Also to nearest drlg. unit line, if any)

790' to Lease & Property line.

790' / Drlg. Unit line.

18. DISTANCE FROM PROPOSED LOCATION TO NEAREST WELL, DRILLING, COMPLETED, OR APPLIED FOR, ON THIS LEASE, FT.

1580 ft.

16. NO. OF ACRES IN LEASE

2560

19. PROPOSED DEPTH

4275

17. NO. OF ACRES ASSIGNED TO THIS WELL

159.96

20. ROTARY OR CABLE TOOLS

Rotary

21. ELEVATIONS (Show whether DF, RT, GR, etc.)

7367 GR

22. APPROX. DATE WORK WILL START*

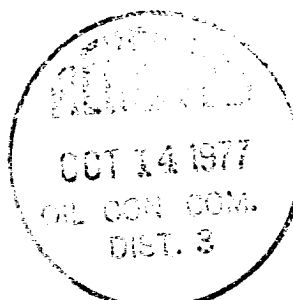
November 1, 1977

23.

PROPOSED CASING AND CEMENTING PROGRAM

SIZE OF HOLE	SIZE OF CASING	WEIGHT PER FOOT	SETTING DEPTH	QUANTITY OF CEMENT
9-7/8"	7-5/8"	26.40#	300	130 cu. ft.
6-3/4"	4-1/2"	9.50#	4275	1200 cu. ft.

This well will be drilled and completed in the Pictured Cliff formation. After pipe is set and cemented it will be perforated and sand water fraced to stimulate production. 1-1/2" tubing will be set at approximately 4000 feet.



Gas is dedicated

IN ABOVE SPACE DESCRIBE PROPOSED PROGRAM: If proposal is to deepen or plug back, give data on present productive zone and proposed new productive zone. If proposal is to drill or deepen directionally, give pertinent data on subsurface locations and measured and true vertical depths. Give blowout preventer program, if any.

24.

SIGNED

Rudy D. Motto

TITLE

Area Superintendent

DATE

October 7, 1977

(This space for Federal or State office use)

PERMIT NO.

APPROVAL DATE

APPROVED BY

TITLE

DATE

CONDITIONS OF APPROVAL, IF ANY:

OK

*See Instructions On Reverse Side

Instructions

General: This form is designed for submitting proposals to perform certain well operations, as indicated, on all types of lands and leases for appropriate action by either a Federal or a State agency, or both, pursuant to applicable Federal and/or State laws and regulations. Any necessary special instructions concerning the use of this form and the number of copies to be submitted, particularly with regard to local, area, or regional procedures and practices, either are shown below or will be issued by, or may be obtained from, the local Federal and/or State office.

Item 1: If the proposal is to redrill to the same reservoir at a different subsurface location or to a new reservoir, use this form with appropriate notations. Consult applicable State or Federal regulations concerning subsequent work proposals or reports on the well.

Item 4: If there are no applicable State requirements, locations on Federal or Indian land should be described in accordance with Federal requirements. Consult local State or Federal office for specific instructions.

Item 14: Needed only when location of well cannot readily be found by road from the land or lease description. A plat, or plats, separate or on this reverse side, showing the roads to, and the surveyed location of, the well, and any other required information, should be furnished when required by Federal or State agency offices.

Items 15 and 18: If well is to be, or has been directionally drilled, give distances for subsurface location of hole in any present or objective production zone.

Item 22: Consult applicable Federal or State regulations, or appropriate officials, concerning approval of the proposal before operations are started.

**NEW MEXICO OIL CONSERVATION COMMISSION
WELL LOCATION AND ACERAGE DEDICATION PLAT**

All distances must be from the outer boundaries of the Section

Operator SUPRON ENERGY CORPORATION			Lease JICARILLA "G"		Well No. 2R
Unit Letter B	Section 1	Township 26 NORTH	Range 5 WEST	County RIO ARriba	
Actual Footage Location of Well: <div style="display: flex; justify-content: space-between;"> 790 feet from the NORTH line and 1450 feet from the EAST line </div>					
Ground Level Elev. 7367	Producing Formation PICTURED CLIFFS	Pool TAPACITO	Dedicated Acreage: 159.96 Acres		

1. Outline the acreage dedicated to the subject well by colored pencil or hatchure marks on the plat below.
2. If more than one lease is dedicated to the well, outline each and identify the ownership thereof (both as to working interest and royalty),
3. If more than one lease of different ownership is dedicated to the well, have the interests of all owners been consolidated by communitization, unitization, force-pooling, etc?

() Yes () No If answer is "yes," type of consolidation

If answer is "no," list the owners and tract descriptions which have actually consolidated. (Use reverse side of this form if necessary.)

No allowable will be assigned to the well until all interests have been consolidated (by communitization, unitization, forced-pooling, or otherwise) or until a non standard unit, eliminating such interests, has been approved by the Commission.

CERTIFICATION

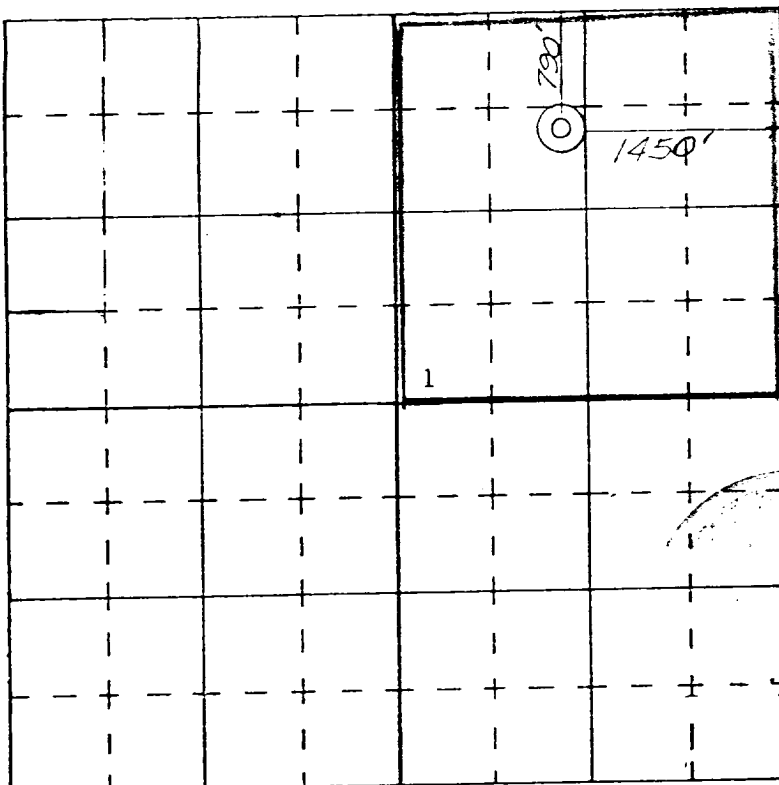
I hereby certify that the information contained herein is true and complete to the best of my knowledge and belief.

[Signature]
Name **Harry D. Motto**

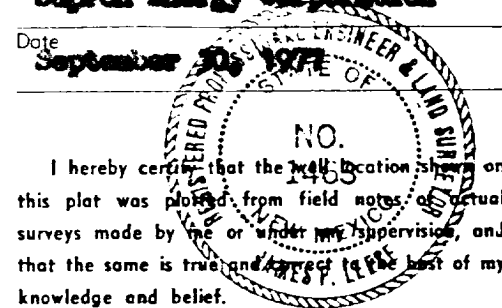
Position
Area Superintendent

Company
Supron Energy Corporation

Date
September 20, 1977



SCALE—4 INCHES EQUALS 1 MILE



I hereby certify that the well location shown on this plat was plotted from field notes of actual surveys made by me or under my supervision, and that the same is true and correct to the best of my knowledge and belief.

22 September, 1977
Date Surveyed

[Signature]
Registered Professional Engineer
and/or Land Surveyor
James P. Leese

1463
Certificate No.

SUPRON ENERGY CORPORATION

POST OFFICE BOX 808

FARMINGTON, NEW MEXICO 87401

September 30, 1977

United States Geological Survey
P. O. Box 1809
Durango, Colorado 81301

Attention: Mr. Jerry Long

Dear Sir:

Supron Energy Corporation proposes to drill the Jicarilla "G" No. 2-R well located 790 feet from the North line and 1850 feet from the East line of Section 1, Township 26 North, Range 5 West, N.M.P.M., Rio Arriba County, New Mexico.

The following attachments are included with this application:

1. Map of existing roads.
2. No access road is required.
3. Location of existing wells.
4. Lateral roads to well locations.
5. Location of surface equipment, if required.
6. Drilling and Completion water will be obtained from the Supron Energy Corporation water well located SW 1/4, Section 23, T-26N, R-4W, N.M.P.M., Rio Arriba County, New Mexico.
7. Waste will be disposed of by being placed in the reserve pit and buried upon completion of the well.
8. There will be no camp at or near the well site.
9. There will be no air strip.
10. A plat is attached showing the location of the rig, mud tanks, reserve pit, burn pit, ect.
11. A letter of Certification is attached.
12. After the well is completed the location will be cleaned up and bladed. The reserve pit will be fenced until it has dried and then the pit will be restored to its natural state. The well does not require an access road.
13. The soil is sandy loam with the principal vegetation being Juniper, Pinon, Rabbit Brush and Grama grass.

JICARILLA "C" NO. 2-X

1. The Geologic name of the surface formation is, "Wasatch".
2. The Estimated tops of important Geologic markers are:
 - A. Base of Ojo Alamo - 3735 DF
 - B. Fruitland - 3965 DF
 - C. Pictured Cliff - 4092 DF
3. The estimated depths at which anticipated water, Oil, gas or other mineral bearing formations are expected to be encountered are:
 - A. Base of Ojo Alamo - 3735 DF
 - B. Fruitland - 3965 DF
 - C. Pictured Cliff - 4092 DF
4. The casing program is shown on Form 9-331C and all casing is new.
5. The leases's pressure control equipment schematics are attached along with minimum specifications, testing procedures and frequencies.
6. The type, estimated volumes and characteristics of the circulating medium is as follows:
 - A. From 0 feet to 300 feet - Natural mud.
 - B. From 300 feet to 4275 feet - Formaloid non dispersed mud containing 167 sacks gal, 67 sacks formaloid, 10 sacks G.M.C., 5 sacks Soda Ash and 12 sacks of Gensite. Mud weight will be maintained between 8.2# and 8.8#.
7. The Auxiliary equipment to be used will be floats at the bit and a sub on the floor with a full opening valve to be stabbed into the drill pipe when the Kelly is not in the string.
8. This well is in an area which is almost completely developed; therefore, we will not have a testing and coring program. The logging program will be as follows:
 - A. E.S. Induction
 - B. Gamma Ray Density
 - C. Gamma Ray Correlation
 - D. Cement Bond or Temperature
9. There are no anticipated abnormal pressures, temperatures or hydrogen sulfide problems expected in this highly developed area.

Mathematical Analysis

1. The function $f(x)$ is defined on the interval $[a, b]$ and is continuous.

2. The function $f(x)$ is differentiable on the interval (a, b) .

3. The function $f(x)$ is twice differentiable on the interval (a, b) .

4. The function $f(x)$ is three times differentiable on the interval (a, b) .

5. The function $f(x)$ is four times differentiable on the interval (a, b) .

6. The function $f(x)$ is five times differentiable on the interval (a, b) .

7. The function $f(x)$ is six times differentiable on the interval (a, b) .

8. The function $f(x)$ is seven times differentiable on the interval (a, b) .

9. The function $f(x)$ is eight times differentiable on the interval (a, b) .

10. The function $f(x)$ is nine times differentiable on the interval (a, b) .

11. The function $f(x)$ is ten times differentiable on the interval (a, b) .

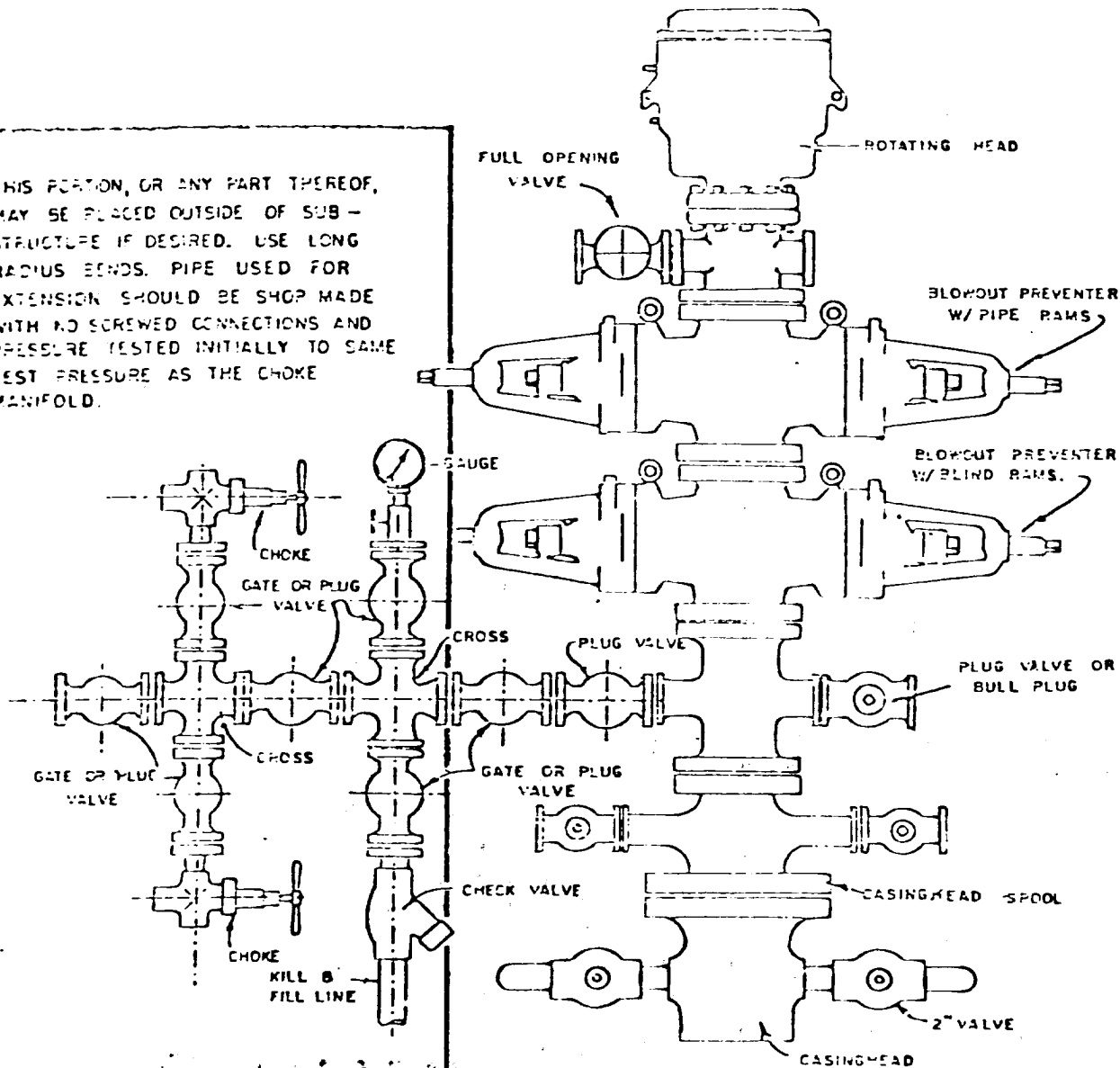
12. The function $f(x)$ is eleven times differentiable on the interval (a, b) .

13. The function $f(x)$ is twelve times differentiable on the interval (a, b) .

JICANTIAA "0" #2-R

Blowout Preventer will be tested daily and prior to drilling out with the results to be logged on the drillers report. The B.O.P. and all valve and fittings are rated at 3000 PSI working pressure.

THIS PORTION, OR ANY PART THEREOF, MAY BE PLACED OUTSIDE OF SUB-STRUCTURE IF DESIRED. USE LONG RADIUS BENDS. PIPE USED FOR EXTENSION SHOULD BE SHOP MADE WITH NO SCREWED CONNECTIONS AND PRESSURE TESTED INITIALLY TO SAME TEST PRESSURE AS THE CHOKE MANIFOLD.



BLOWOUT PREVENTER HOOKUP

RECEIVED

OCT 12 1977

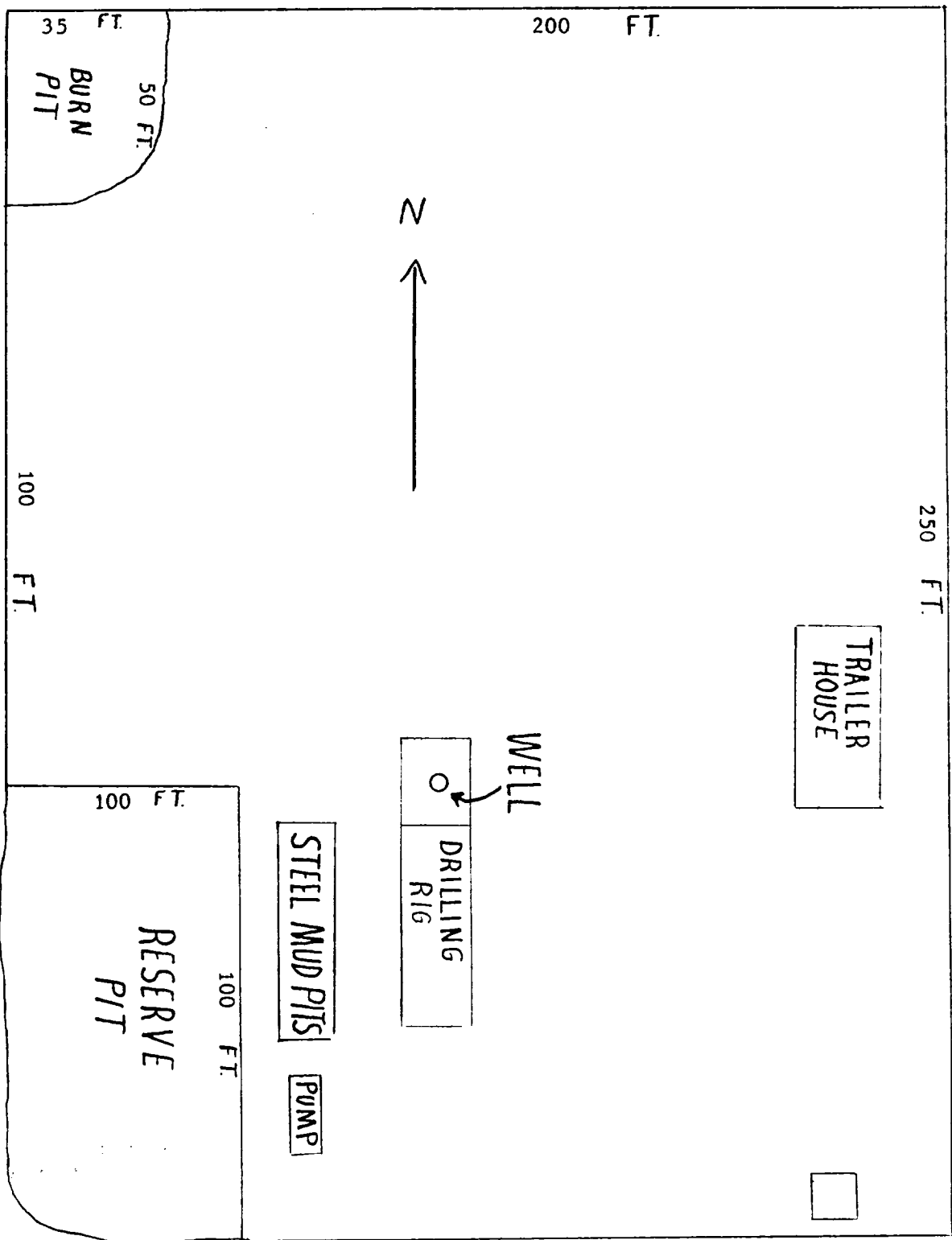
U. S. GEOLOGICAL SURVEY
DENVER, COLO.

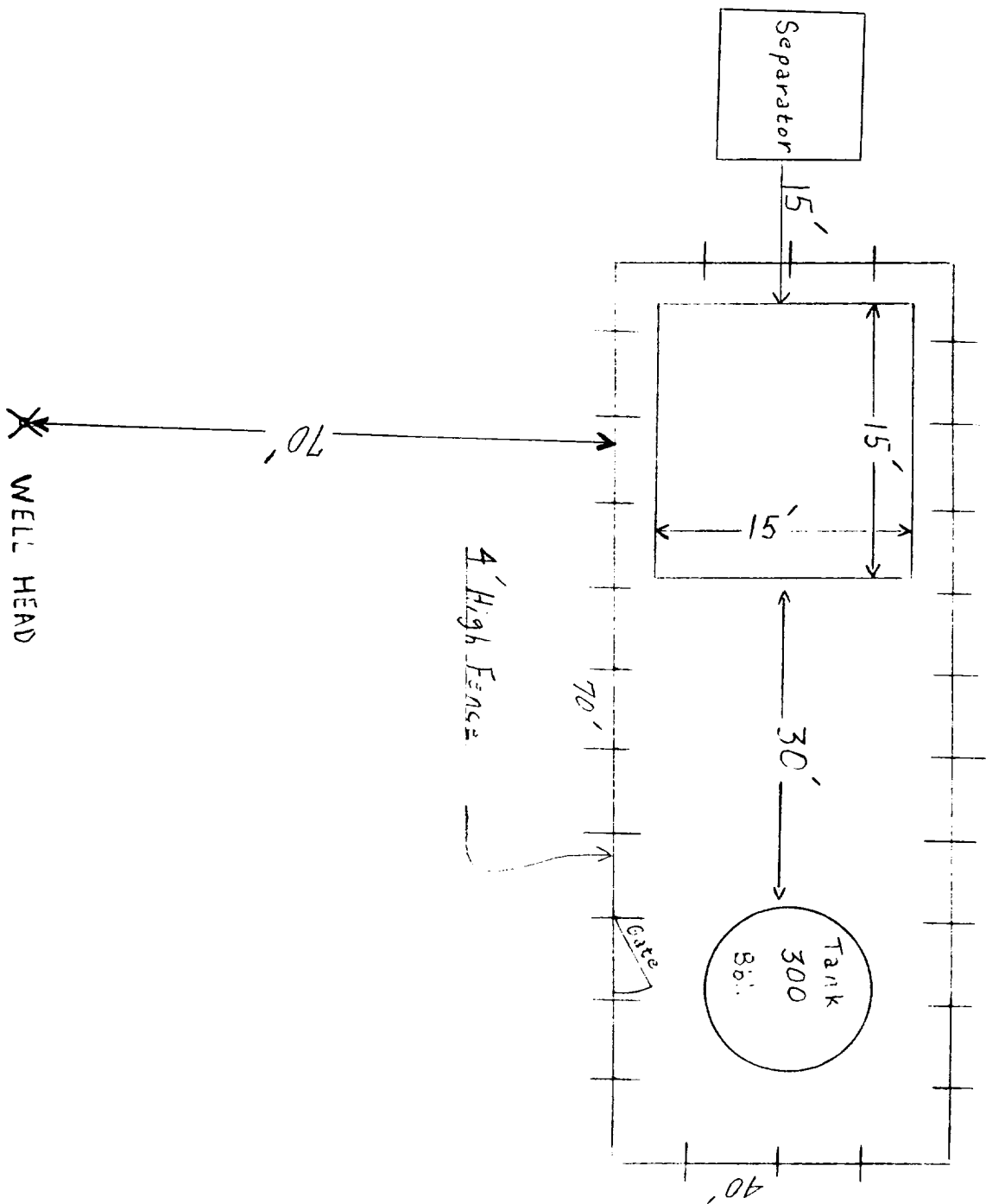
SUPRON ENERGY CORPORATION

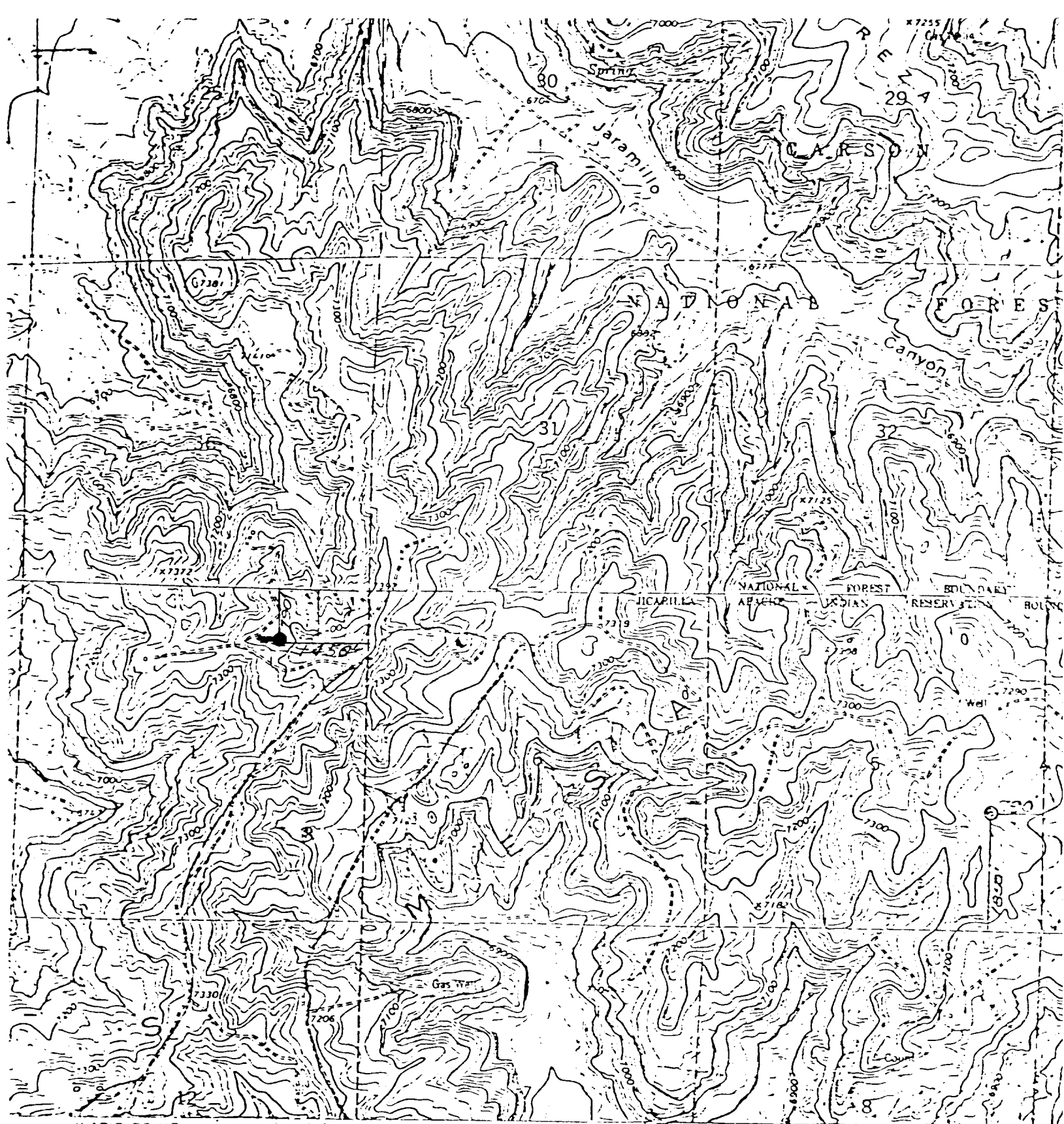
JICARILLA "G" NO. 2-R

14-50

790 Feet from the North line and 1850 feet from the East line,
Section 1, Township 26 North, Range 4 West, Rio Arriba County,
New Mexico

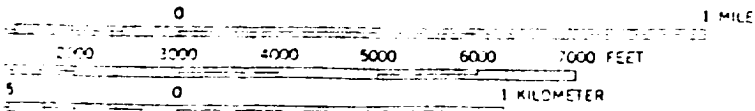






ILAPIS POINT
4556 IV NE

SCALE 1:24,000



CONTOUR INTERVAL 20 FEET
DATUM S MEAN SEA LEVEL

VICINITY MAP —
SUPRON ENERGY CORP.
Well Loc. in NE 1/4 NE 1/4 of
Sec. 1, T26N, R5W,
N.M.P.M., Rio Arriba County,
New Mexico
Scale 1" = 2000' Date 9/15/1977