

Denny E. Faust
DEPUTY OIL & GAS INSPECTOR

FEB 26 1998

JICARILLA APACHE TRIBE

ENVIRONMENTAL PROTECTION OFFICE

P.O. BOX 507
DULCE, NEW MEXICO 87528

SUBMIT 1 COPY TO
NATURAL
RESOURCE DEPT
AND OIL GAS
ADMINISTRATION

PIT REMEDIATION AND CLOSURE REPORT

Operator: PNM Gas Services (BRCG) Telephone: 324-3764
Address: 603 W. Elm Street Farmington, NM 87401
Facility or Well Name: Jicarilla G-2R
Location: Unit: G Sec. 1 T. 26 N R. 5 W County Rio Arriba
Pit Type: Separator ☒ Dehydrator ☐ Other ☐
Land Type: Jicarilla Apache

Pit Location: Pit dimensions: length 15' width 14' depth 5'
(Attach diagram) Reference: wellhead ☒ other ☐
Footage from reference: 132'
Direction from reference: 45 Degrees East North
West of South

Depth to Ground Water:

(Vertical distance from contaminants to seasonal high water elevation of ground water)

Less than 50 feet (20 points)
50 feet to 99 feet (10 points)
Greater than 100 feet (0 points)

Wellhead Protection Area:

(Less than 200 feet from a private domestic water source, or, less than 1,000 feet from all other water sources)

Yes (20 points)
No (0 points)

Distance to Surface Water:

(Horizontal distance to perennial lakes, ponds, rivers, streams, creeks, irrigation canals and ditches)

Less than 200 feet (20 points)
200 feet to 1,000 feet (10 points)
Greater than 1,000 feet (0 points)

Distance to Ephemeral Stream (dry wash):

(Horizontal distance to all downgradient streams having a width of at least 10 feet)

Less than or equal to 100 feet (10 points)
Greater than 100 feet (0 points)

Distance to Nearest Lake, Playa, or Watering Pond:

(Horizontal distance to all downgradient lakes, playas, and livestock or wildlife water ponds)

Less than or equal to 100 feet (10 points)
Greater than 100 feet (0 points)

RANKING SCORE (TOTAL POINTS):

Date Remediation Started:

6/25/97

Date Completed:

8/25/97

Remediation Method:

Excavation

X

Approx. Cubic Yards

39(Check all
appropriate
sections)

Landfarmed

X

Amount Landfarmed (cubic yds):

39

Other _____

Remediation Location:

Onsite

X

Offsite _____

(i.e., landfarmed onsite, name
and location of offsite facility)

General Description of Remedial Action:

Removed contaminated soil from all four side walls
and pit bottom as to get it below 100 ppm head
space reading.

Ground Water Encountered:

No

X

Yes _____

Depth _____

Final Pit Closure
Sampling:

Sample Location

North, East, South, West sides
walls and pit bottom.(if multiple samples, attach
sample result and diagram of
sample locations and
depths.)

Sample depth

5'

Sample date

6/25/97

Sample time

1512

Sample Results

Soil: Benzene (ppm) _____

Water: Benzene (ppb) _____

Total BTEX (ppm) _____

Toluene (ppb) _____

Field headspace (ppm)

24.2

Ethylbenzene (ppb) _____

TPH ND ppm

Method

8015

Total Xylenes (ppb) _____

Ground Water Sample:

Yes _____

No

X

(If yes, attach sample results)

I HEREBY CERTIFY THAT THE INFORMATION ABOVE IS TRUE AND COMPLETE TO THE BEST OF MY
KNOWLEDGE AND MY BELIEF

DATE

7/2/97

PRINTED NAME

Ronald A. Dedrick

SIGNATURE

Ronald A. Dedrick

AND TITLE

Environmental Technician IIAFTER REVIEW OF THE PIT CLOSURE INFORMATION, PIT CLOSURE IS APPROVED IN ACCORDANCE
TO JICARILLA APACHE TRIBE PIT CLOSURE ORDINANCE.

APPROVED: YES

X

NO _____

(REASON): _____

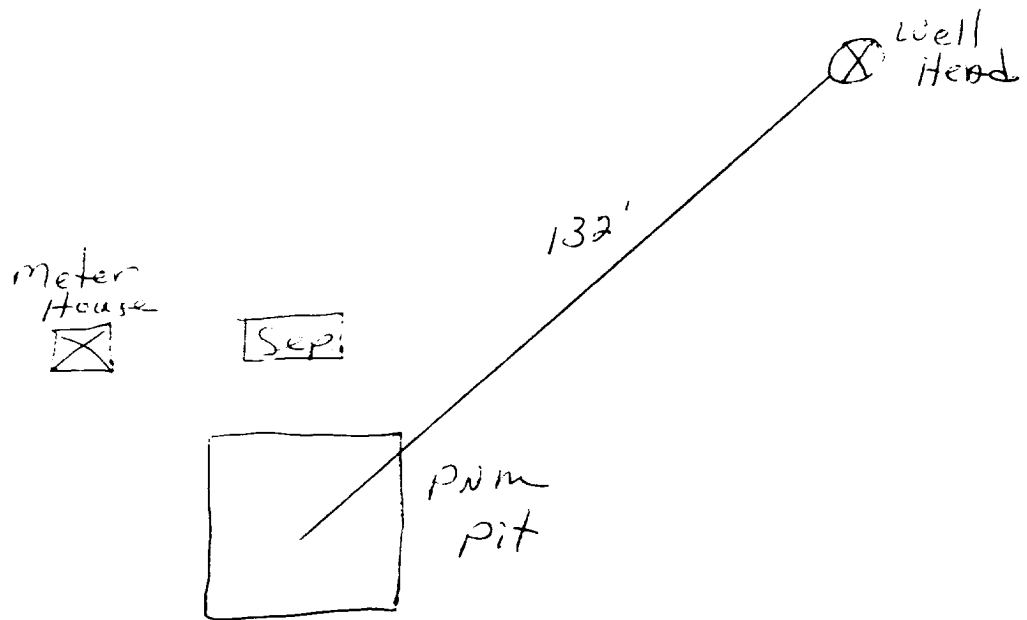
SIGNED:

Kenn C. Miller

DATE:

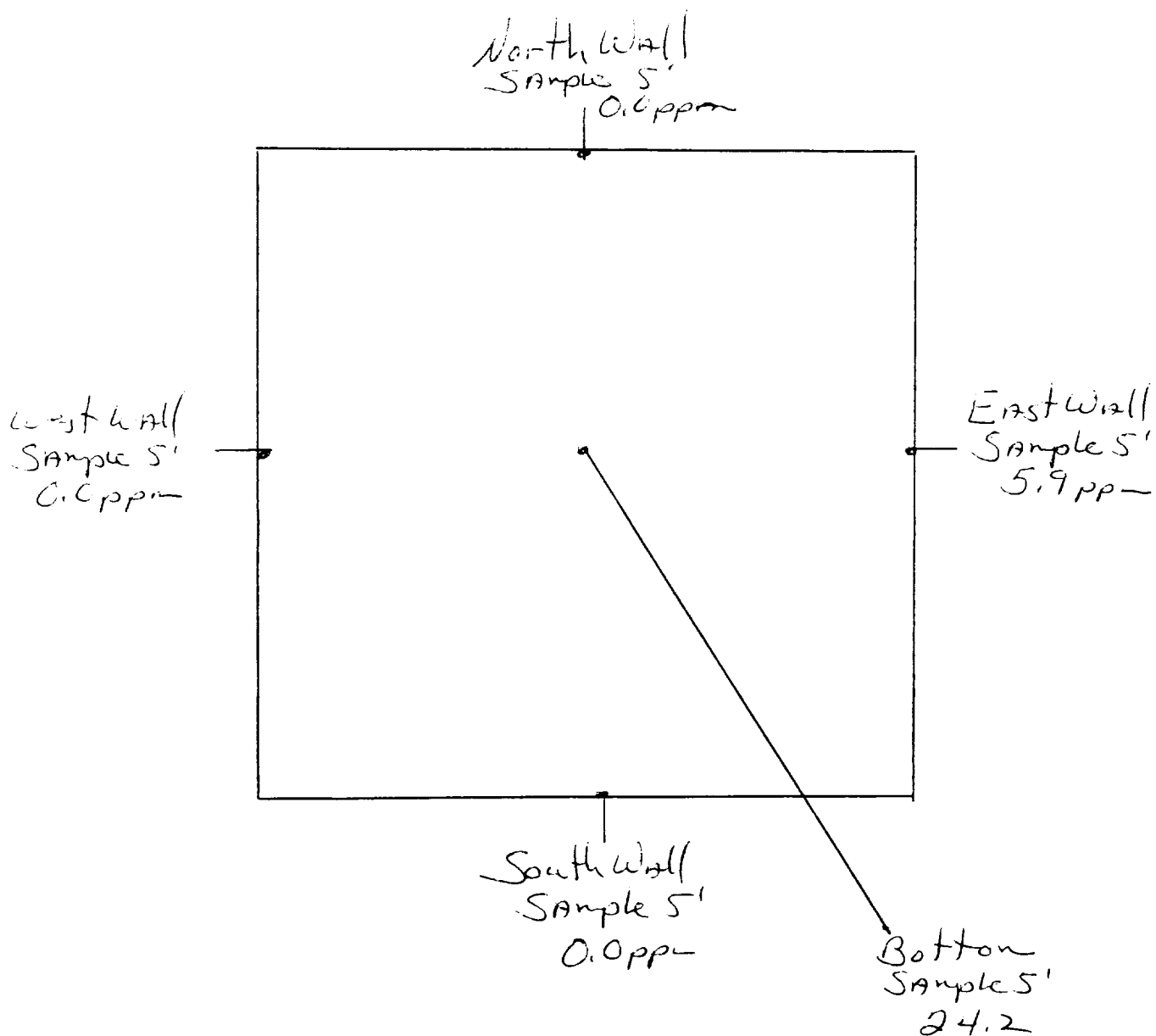
7-3-97

Jicarilla G-2R
Sec. 1 T26N R5W Unit G
BROG



Jicarilla G-2R
Sec. 1 T.26N R.50W Unit G
BROG

15' x 14' x 5'



OFF: (505) 325-5667



LAB: (505) 325-1556

ANALYTICAL REPORT

Attn: *Denver Bearden*
Company: *PNM Gas Services*
Address: *603 W. Elm*
City, State *Farmington, NM 87401*

Date: *1-Jul-97*
COC No.: *5497*
Sample No.: *15093*
Job No.: *2-1000*

Project Name: ***PNM Gas Services - Jicarilla G-2R***
Project Location: ***9706251512; 5pt. Composite***
Sampled by: *TE* Date: *25-Jun-97* Time: *15:12*
Analyzed by: *DC/HR* Date: *27-Jun-97*
Sample Matrix: *Soil*

Laboratory Analysis

| Parameter | Results as Received | Unit of Measure | Limit of Quantitation | Unit of Measure |
|--|---------------------|-----------------|-----------------------|-----------------|
| <i>Diesel Range Organics (C10 - C28)</i> | ND | mg/kg | 5 | mg/kg |

ND - Not Detected at Limit of Quantitation

Quality Assurance Report

DRO QC No.: 0548-STD

Continuing Calibration Verification

| Parameter | Method Blank | Unit of Measure | True Value | Analyzed Value | RPD | RPD Limit |
|---------------------------------|--------------|-----------------|------------|----------------|-----|-----------|
| <i>Diesel Range (C10 - C28)</i> | ND | ppm | 200 | 204 | 1.8 | 15% |

Matrix Spike

| Parameter | 1 - Percent Recovered | 2 - Percent Recovered | Limit | RPD | RPD Limit |
|-------------------------------|-----------------------|-----------------------|----------|-----|-----------|
| <i>Diesel Range (C10-C28)</i> | 93 | 89 | (70-130) | 5 | 20% |

Method - *SW-846 EPA Method 8015A mod. - Nonhalogenated Volatile Hydrocarbons by Gas Chromatography*

Approved by: 

Date: *7/1/97*

P.O. BOX 2606 • FARMINGTON, NM 87499

TECHNOLOGY BLENDING INDUSTRY WITH THE ENVIRONMENT

JICARILLA APACHE TRIBE
ENVIRONMENTAL
PROTECTION OFFICE
P.O. BOX 507
DULCE, NEW MEXICO 87528

SUBMIT 1 COPY TO
NATURAL
RESOURCE DEPT
AND OIL GAS
ADMINISTRATION

ON-SITE SOIL REMEDIATION REPORT

Operator: PNM Gas Services (BROG) Telephone: 324-3764
Address: 603 W. Elm Street Farmington, NM 87401
Facility or Well Name: Jicarilla G-2R
Location: Unit: G Sec. 1 T. 26 N R. 5 W County Rio Arriba
Land Type: Jicarilla Apache

Date Remediation Started: 6/25/97 Date Completed: 7/3/97
Remediation Method: Landfarmed ☒ Approx. cubic yards 39
Composted ☐
Other ☐

Depth to Ground Water: (pts.) 5
Distance to an Ephemeral Stream: (pts.) 5
Distance to Nearest Lake, Playa,
or Watering Pond: (pts.) 5
Wellhead Protection Area: (pts.) 5
Distance to Surface Water: (pts.) 5
Ranking Score (Total Points): 5

Final Closure Sampling:

Sampling Date: 7/3/97 Time 1250
Sampling Results:
Field Headspace (ppm) 11.3
TPH (ppm) ND Method 8015
Other

I HEREBY CERTIFY THAT THE INFORMATION ABOVE IS TRUE AND COMPLETE TO THE BEST OF MY KNOWLEDGE AND BELIEF

DATE 7/9/97 PRINTED NAME Ronald A. Dedrick
SIGNATURE Ronald A. Dedrick AND TITLE Environmental Technician II

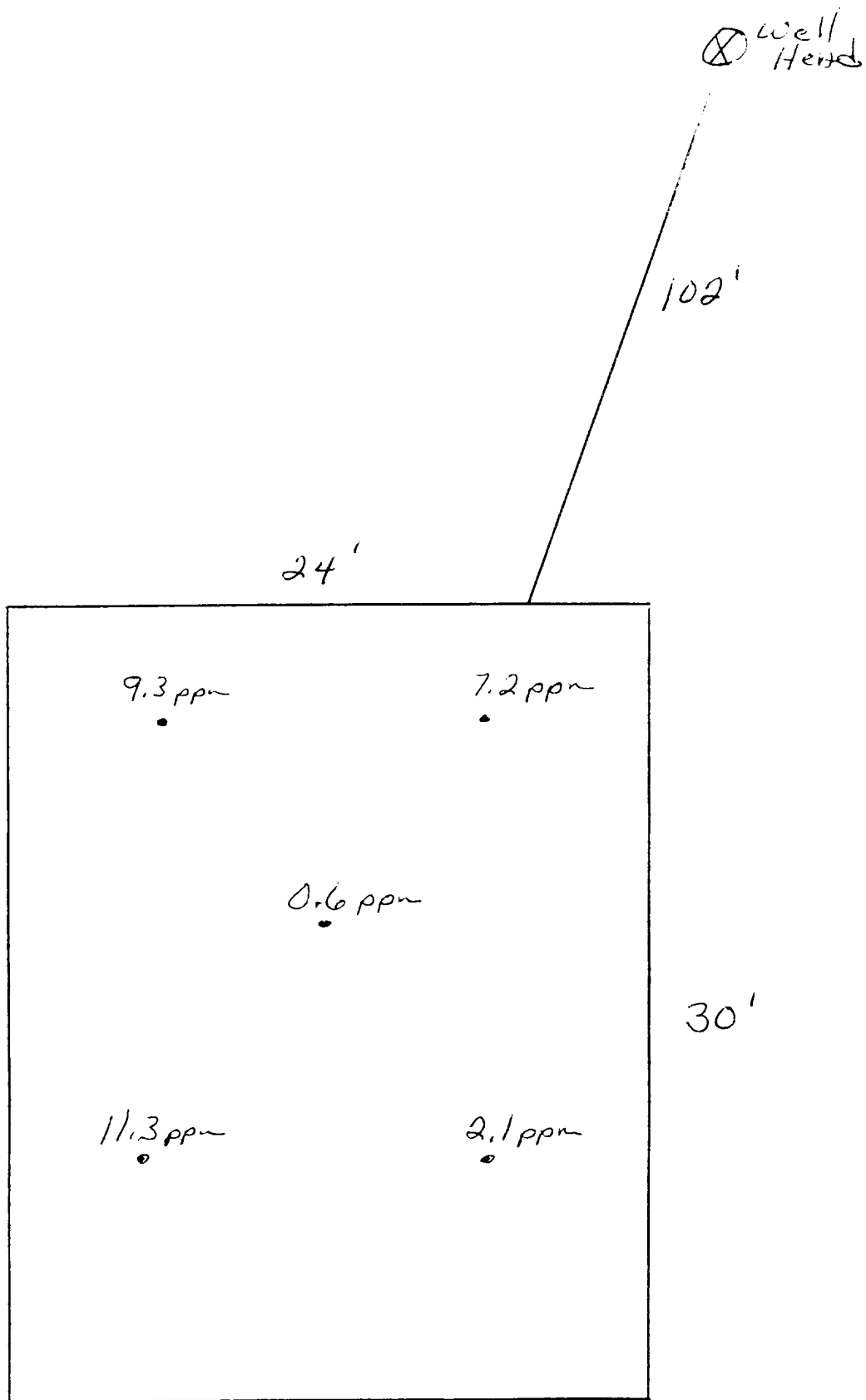
AFTER REVIEW OF THE SOIL REMEDIATION INFORMATION, ON-SITE REMEDIATION APPROVED IN ACCORDANCE TO THE
JICARILLA APACHE TRIBE PIT CLOSURE ORDINANCE

APPROVED: YES ☒ NO ☐ (REASON) we are Backfll

SIGNED: Keith C. Mann DATE: 7-9-97

Jicarilla G-2R
Sec 1 T26N RSW Unit G
BROG

Land farm



OFF: (505) 325-5667



LAB: (505) 325-1556

ANALYTICAL REPORT

Attn: *Denver Bearden*
Company: *PNM Gas Services*
Address: *603 W. Elm*
City, State: *Farmington, NM 87401*

Date: *8-Jul-97*
COC No.: *5507*
Sample No.: *15195*
Job No.: *2-1000*

Project Name: *PNM Gas Services -Jicarilla G-2R Landfarm*
Project Location: *9707031250; 5pt. Composite*
Sampled by: *RB* Date: *3-Jul-97* Time: *12:50*
Analyzed by: *DC/HR* Date: *8-Jul-97*
Sample Matrix: *Soil*

Laboratory Analysis

| Parameter | Results as Received | Unit of Measure | Limit of Quantitation | Unit of Measure |
|--|---------------------|-----------------|-----------------------|-----------------|
| <i>Diesel Range Organics (C10 - C28)</i> | ND | mg/kg | 5 | mg/kg |

ND - Not Detected at Limit of Quantitation

Quality Assurance Report

DRO QC No.: 0548-STD

Continuing Calibration Verification

| Parameter | Method Blank | Unit of Measure | True Value | Analyzed Value | RPD | RPD Limit |
|---------------------------------|--------------|-----------------|------------|----------------|-----|-----------|
| <i>Diesel Range (C10 - C28)</i> | ND | ppm | 200 | 185 | 7.8 | 15% |

Matrix Spike

| Parameter | 1- Percent Recovered | 2 - Percent Recovered | Limit | RPD | RPD Limit |
|-------------------------------|----------------------|-----------------------|----------|-----|-----------|
| <i>Diesel Range (C10-C28)</i> | 84 | 89 | (70-130) | 5 | 20% |

Method - SW-846 EPA Method 8015A mod. - Nonhalogenated Volatile Hydrocarbons by Gas Chromatography

Approved by: *Heidi Reese*
Date: *7/9/97*

P.O. BOX 2606 • FARMINGTON, NM 87499

- TECHNOLOGY BLENDING INDUSTRY WITH THE ENVIRONMENT -