

UNITED STATES
DEPARTMENT OF THE INTERIOR
GEOLOGICAL SURVEY

30-039-21608
3. LEASE DESIGNATION AND SERIAL NO.

Contract #97

APPLICATION FOR PERMIT TO DRILL, DEEPEN, OR PLUG BACK

1a. TYPE OF WORK

DRILL ☒

DEEPEN ☐

PLUG BACK ☐

b. TYPE OF WELL

OIL
WELL ☐

GAS
WELL ☒

OTHER

SINGLE
ZONE ☐

MULTIPLE
ZONE ☒

2. NAME OF OPERATOR

Consolidated Oil & Gas, Inc.

3. ADDRESS OF OPERATOR

1860 Lincoln Street, Denver, Colorado 80295

4. LOCATION OF WELL (Report location clearly and in accordance with any State requirements.)*

At surface

1190' FNL & 790' FEL

At proposed prod. zone

Same as above

14. DISTANCE IN MILES AND DIRECTION FROM NEAREST TOWN OR POST OFFICE*

31 miles northwest of Lindrith, New Mexico

15. DISTANCE FROM PROPOSED*

LOCATION TO NEAREST
PROPERTY OR LEASE LINE, FT.
(Also to nearest drlg. unit line, if any)

790'

16. NO. OF ACRES IN LEASE

2503.9

17. NO. OF ACRES ASSIGNED

TO THIS WELL
E/2 320

18. DISTANCE FROM PROPOSED LOCATION*
TO NEAREST WELL, DRILLING, COMPLETED,
OR APPLIED FOR, ON THIS LEASE, FT.

3000'

19. PROPOSED DEPTH

7040

20. ROTARY OR CABLE TOOLS

Rotary

21. ELEVATIONS (Show whether DF, RT, GR, etc.)

7109 GR

22. APPROX. DATE WORK WILL START*

March 21, 1978

23. PROPOSED CASING AND CEMENTING PROGRAM

SIZE OF HOLE	SIZE OF CASING	WEIGHT PER FOOT	SETTING DEPTH	QUANTITY OF CEMENT
15"	10-3/4"	40.5#	300'	300 sx. circulated
8-3/4"	7"	23#	4120'	250 sx.
6-1/4"	4-1/2"	10.5#	7040	250 sx.

1. Drill 15" hole to 300'+. Set new 10-3/4" casing and circulate cement.
2. WOC 12 hrs. Install BOP. Pressure test 10-3/4" casing to 600 psi.
3. Drill 8-3/4" hole to 4120'. Set new 7" casing and cement. WOC 12 hrs. and test to 1000 psi.
4. Nipple up for air drilling. Drill 6-1/4" hole with air to 7040' and log.
5. Run and cement 4-1/2" liner.
6. Selectively perforate and stimulate Mesaverde & Pictured Cliff zones.
7. The E/2 of Section 5 is dedicated to this well.
8. This acreage is dedicated to gas contract.

IN ABOVE SPACE DESCRIBE PROPOSED PROGRAM: If proposal is to deepen or plug back, give data on present productive zone and proposed new productive zone. If proposal is to drill or deepen directionally, give pertinent data on subsurface locations and measured and true vertical depths. Give blowout preventer program, if any.

24.

SIGNED

D.T. Stogner, Jr.

TITLE

Chief Drilling and
Production Engineer

DATE Jan. 6, 1978

(This space for Federal or State office use)

PERMIT NO.

APPROVAL DATE

APPROVED BY

TITLE

DATE

CONDITIONS OF APPROVAL, IF ANY:

OK'd

NEW MEXICO OIL CONSERVATION COMMISSION
WELL LOCATION AND ACERAGE DEDICATION PLAT

All distances must be from the outer boundaries of the Section

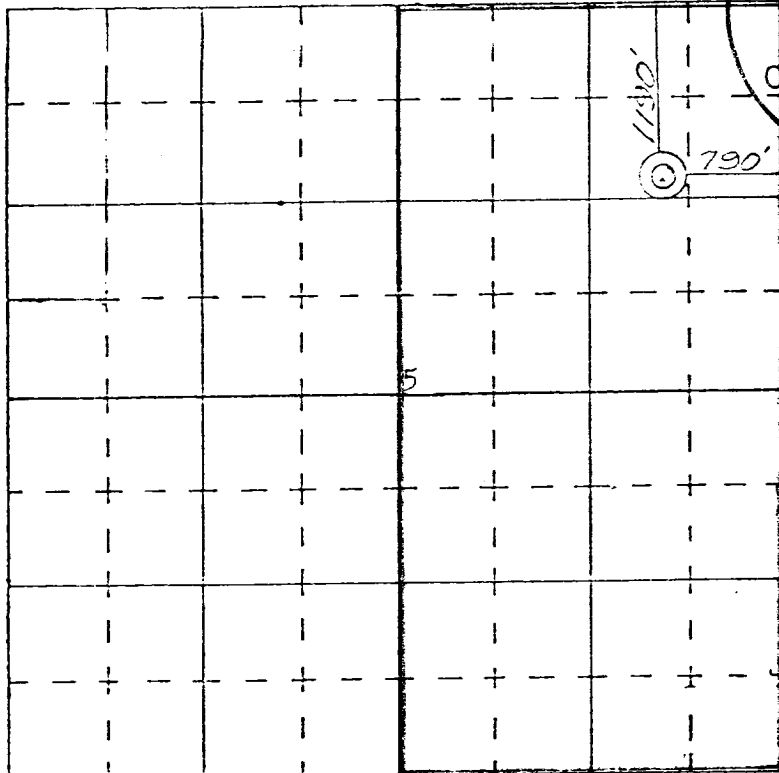
Operator CONSOLIDATED OIL AND GAS, INC.			Lease TRIBAL C		Well No. 7 - R
Unit Letter A	Section 5	Township 26 NORTH	Range 3 WEST	County RIO ARriba	
Actual Footage Location of Well: 1190 feet from the NORTH line and 790 feet from the EAST line					
Ground Level Elev. 7109	Producing Formation Pictured Cliffs & Mesaverde		Foot Tapacito Pictured Cliffs Blanco Mesaverde		Dedicated Acreage: 320 Acres

1. Outline the acreage dedicated to the subject well by colored pencil or hatchure marks on the plat below.
2. If more than one lease is dedicated to the well, outline each and identify the ownership thereof (both as to working interest and royalty).
3. If more than one lease of different ownership is dedicated to the well, have the interests of all owners been consolidated by communitization, unitization, force-pooling, etc?

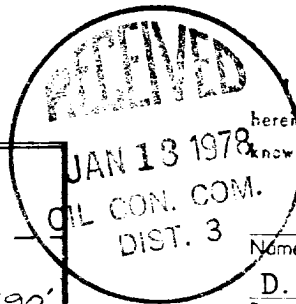
☐ Yes ☐ No If answer is "yes," type of consolidation

If answer is "no," list the owners and tract descriptions which have actually consolidated. (Use reverse side of this form if necessary)

No allowable will be assigned to the well until all interests have been consolidated (by communitization, unitization, forced-pooling, or otherwise) or until a non standard unit, eliminating such interests, has been approved by the Commission.



SCALE—4 INCHES EQUALS 1 MILE



CERTIFICATION

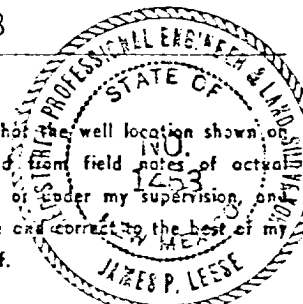
I hereby certify that the information contained herein is true and complete to the best of my knowledge and belief.

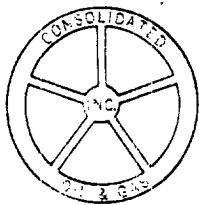
Name *D. T. Stogner, Jr.*
 Position Chief Drilling and Production Engineer
 Company Consolidated Oil & Gas, Inc.

Date Jan. 6, 1978

I hereby certify that the well location shown on this plat was plotted from field notes of actual surveys made by me or under my supervision, and that the same is true and correct to the best of my knowledge and belief.

Date Surveyed 29 November 1977
James P. Leese
 Registered Professional Engineer
 and/or Land Surveyor **James P. Leese**





Consolidated Oil & Gas, Inc.

LINCOLN TOWER BUILDING
1860 LINCOLN STREET
DENVER, COLORADO 80285
(303) 881-5252

January 6, 1978

U. S. Geological Survey
P. O. Box 1809
Durango, Colorado 81301

Re: Application for Permit to Drill
Tribal "C" 7-R
Rio Arriba County, New Mexico

Gentlemen:

Following is the information requested in NTL-6 to accompany the permit to drill:

1. Location: 1190' FNL and 790' FEL Section 5, T26N, R3W, NMPM
Rio Arriba County, New Mexico
2. Elevation of Unprepared Ground: 7109'
3. Geologic Name of Surface Formation: San Jose
4. Type Drilling Tools: Rotary
5. Proposed Drilling Depth: 7040'
6. Estimated Tops of Geologic Markers: Pictured Cliff 3806'; Cliff House 5591'; Pt. Lookout 5940'.
7. Estimated Depths at Which Anticipated Gas or Oil Bearing Formations Expected: Pictured Cliff 3806'; Cliff House 5591'; Pt. Lookout 5940'.
8. Casing Program and Setting Depth:

	<u>Size</u>	<u>Weight</u>	<u>Grade</u>	<u>Condition</u>	<u>Setting Depth</u>
Surface	10-3/4"	40.5#	H-40	New	300'
Intermediate	7"	23#	K-55	New	4120'
Liner	4-1/2"	10.5#	K-55	New	7040'

9. Casing Setting Depth and Cementing:

- a. Surface casing will be set at 300'. Cement will be circulated to surface with approximately 250 sx. neat cement containing 2% CaCl_2 .
- b. Intermediate casing will be set to approximately 300' below the top of the Pictured Cliff or approximately 4120'. Cement will be approximately 150 sx. 65/25 Pozmix containing 12% gel followed by 100 sx. neat containing 2% CaCl_2 .
- c. Liner will be set to total depth of approximately 740' using estimated 250 sx. 50/50 Pozmix containing 4% gel and some lost circulation material (Tuf-plug or Gilsonite).

Note: Volume of cement to be determined after running Caliper log.

10. Pressure Control Equipment: See attached diagram "A"

11. Circulating Media: 0-300' fresh water spud mud; 300-4120' fresh water low solid mud with following properties:

Viscosity 32-38 sec., water loss 20-6, weight 8.5-9.0 ppg. with heavier weights if required by well conditions; 4120-7040' air or gas with conversion to mud of above characteristics if hole becomes wet.

12. Testing, Logging and Coring Programs:

- a. Open hole logs will be run prior to running intermediate casing and production liner.
- b. Coring is not planned

13. Abnormal Pressure or Temperature and Hydrogen Sulfide Gas:

We do not anticipate abnormal pressure, temperature, or hydrogen sulfide gas; however, remote control blowout preventer as shown on attached diagram "A" will be installed.

U. S. Geological Survey
January 6, 1978
Page 3

14. Anticipated Starting Date: Drilling operations should start shortly
after March 10, 1978
15. Other Facets of the Proposed Operations: None

Yours very truly,

CONSOLIDATED OIL & GAS, INC.



D. T. Stogner, Jr.
Chief Drilling and Production Engineer

DTS:lt
Attach.

DEVELOPMENT PLAN FOR SURFACE USE

Tribal "C" 7-R

Consolidated Oil & Gas, Inc. - Operator

Jicarilla Apache Tribal Contract #97
NE/4 NE/4 Sec. 5, T26N, R3W, NMPM
Rio Arriba County, New Mexico

1. Existing Roads

See enclosed topographic map (Exhibit 1) which shows existing improved and unimproved roads. The town of Lindrith is located approximately 15 miles on south on Highway 537 and 13 miles east on a County road.

2. Planned Access Roads

See enclosed topographic map. Will use existing roads to the edge of the wellsite.

3. Location of Existing Wells

See enclosed topographic map

4. Location of Existing and/or Proposed Facilities

See enclosed topographic map showing location of wells and facilities operated by Consolidated Oil & Gas, Inc. If production is encountered, the tank battery and other required producing equipment will be located per attached completion plat. (Exhibit 2)

5. Location and Type of Water Supply

Water for drilling will be trucked approximately six miles from water hole in Tapacito Creek.

6. Source of Construction Materials

No additional construction material will be required.

7. Methods of Handling Waste Disposal

All waste material will be contained by earthen and steel pits. Earthen pits will be subsequently backfilled and buried. A portable chemical toilet will be furnished for drilling personnel.

8. Ancillary Facilities

No separate drill campsites are proposed

9. Wellsite Layout

The drilling site location will be graded and will approximate 200 x 250 with natural drainage to the east. Care will be taken while grading to control erosion. A 2' cut will be required on the northwest corner of the wellsite. See attached drillsite layout. (Exhibit 3)

10. Plans for Restoration of Surface

- A. Following drilling and completion operations, all equipment and material not needed for operations will be removed. Pits containing fluid will be fenced until filled with any additional pits filled and the location cleaned of all trash and junk.
- B. After abandonment, any special rehabilitation and/or revegetation requirements (reseed with seed mixture No. 2) will be complied with and accomplished as expeditiously as possible. All pits should be filled and leveled within 90 days after abandonment.

11. Other Information

The location is in a valley between two sand rock bluffs with a dry wash running just east of the location. The sandy clay soil has sage brush and gramma vegetation with the land used for grazing. There are no occupied dwellings or structures nearby. The surface is owned by the Jicarilla Apache Indians.

12. Operator's Representative

Consolidated Oil & Gas, Inc.
Owen B. Whitenburg
Senior Drilling Engineer
Farmington, New Mexico 87401
Phone: (505) 325-7509 (Office)
(505) 325-2213 (Home)

13. Certification

I hereby certify that I, or persons under my direct supervision, have inspected the proposed drillsite and access route; that I am familiar with the conditions which presently exist; that the statements made in this plan are, to the best of my knowledge, true and correct; and that the work associated with the operations proposed herein will be performed by Consolidated Oil & Gas, Inc. and its contractors and sub-contractors in conformity with this plan and the terms and conditions under which it is approved.

1-6-78
Date

D. T. Stogner, Jr.
D. T. Stogner, Jr.
Chief Drilling and Production Engineer

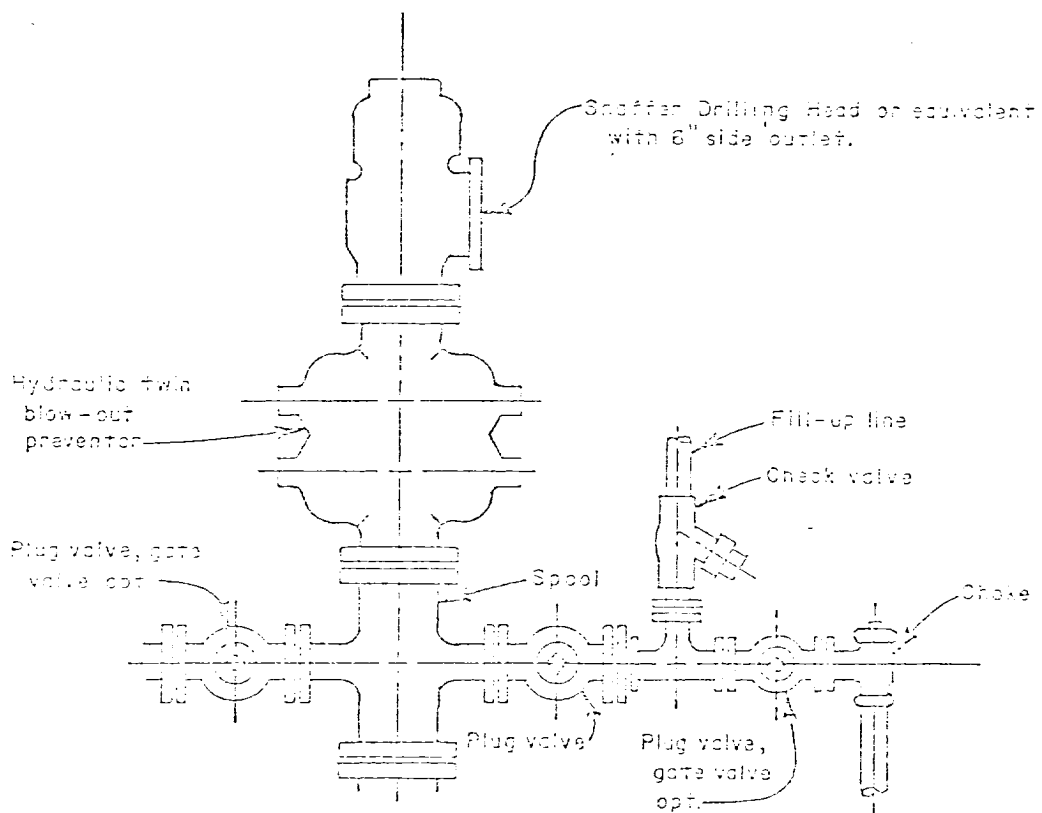
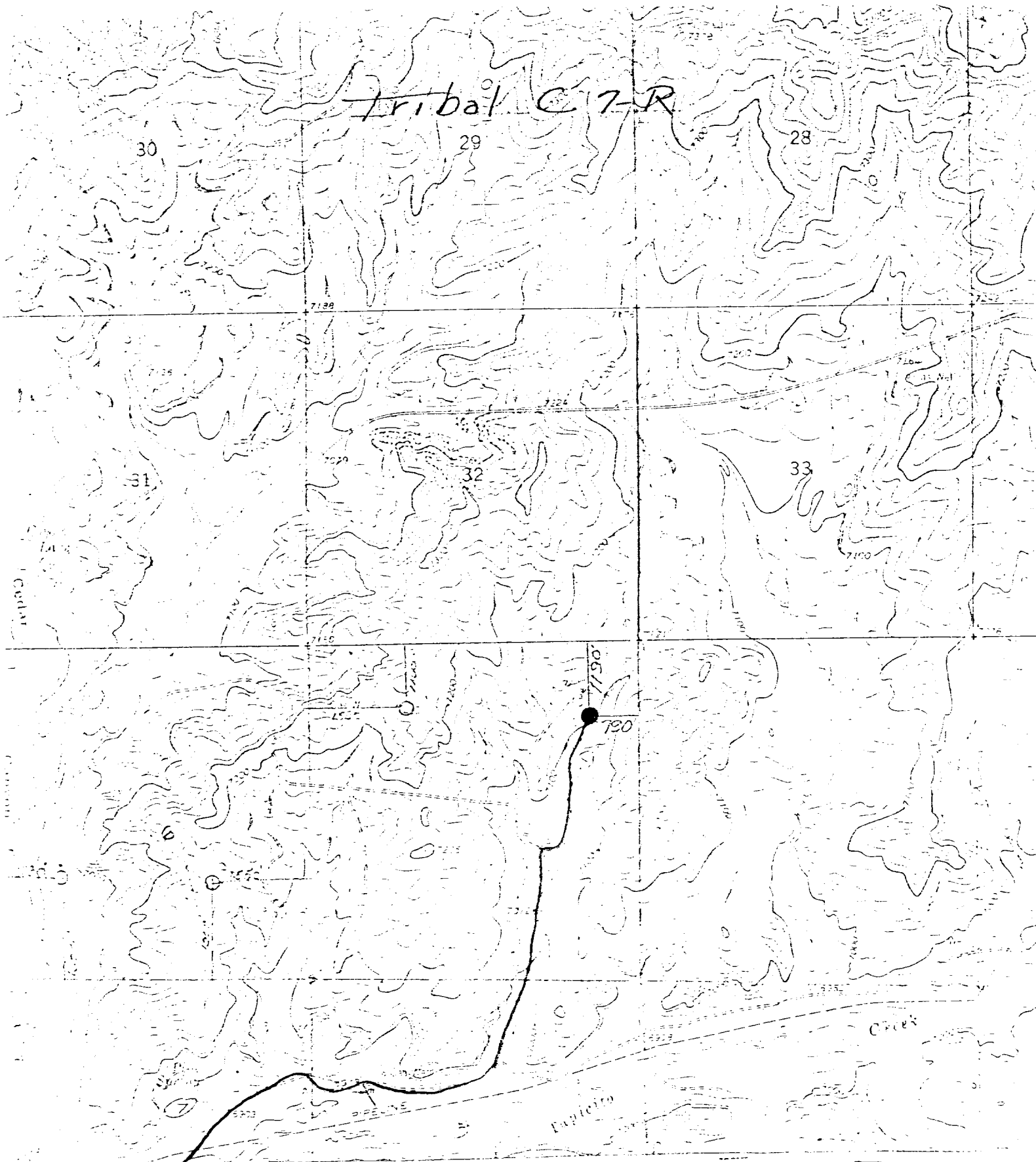


Diagram A
 TRIBAL "C" No. 7-R
 NE 1/4 NE 1/4 SEC. 5, T-26N R-3W
 RIO ARRIBA, NM



Tribal C 7-R

EXHIBIT I

CONSOLIDATED MAPS, INC.
Well location in 1/4 of Sec.
Tribal C 7-R

EXISTING ROAD —

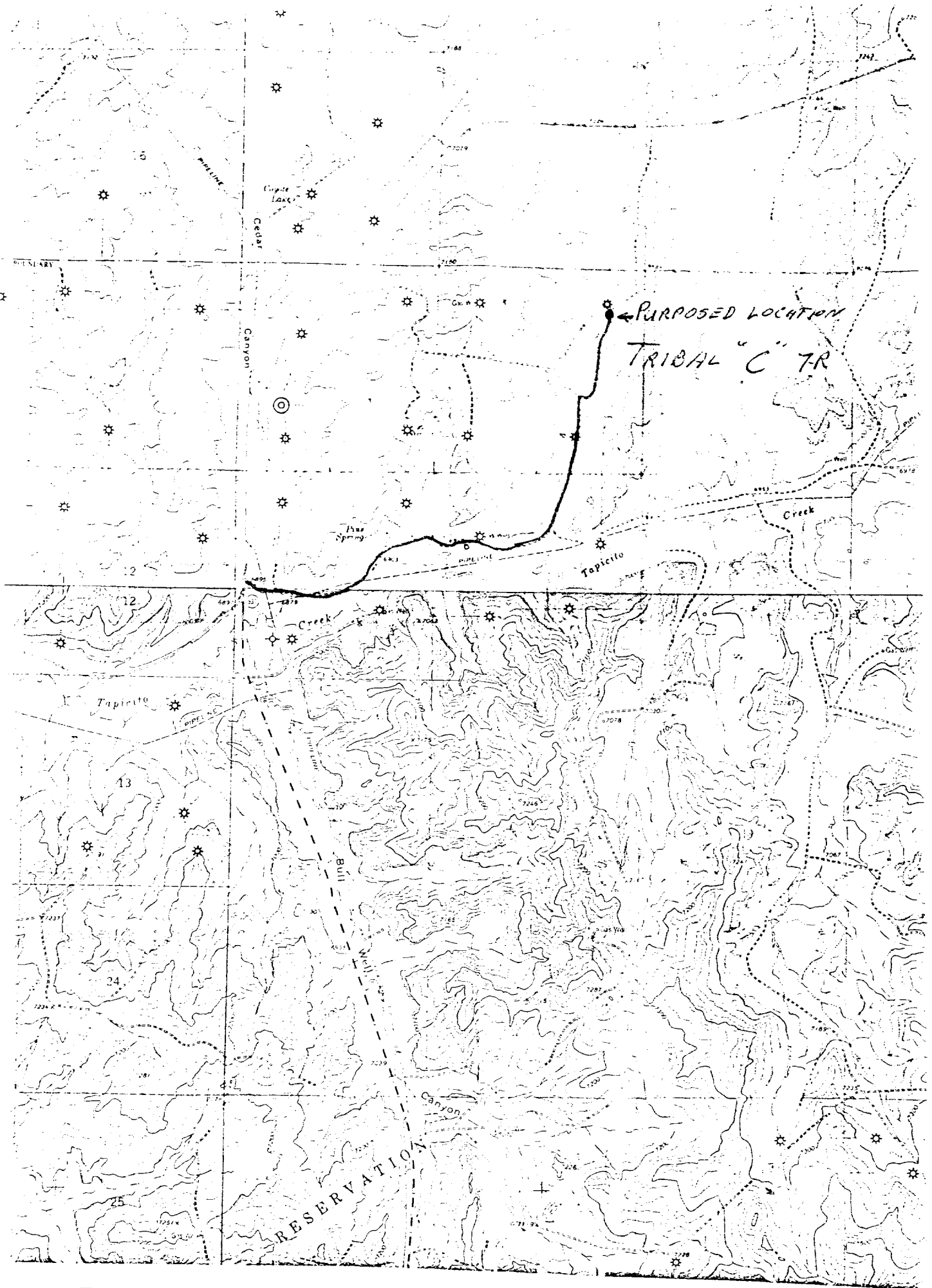
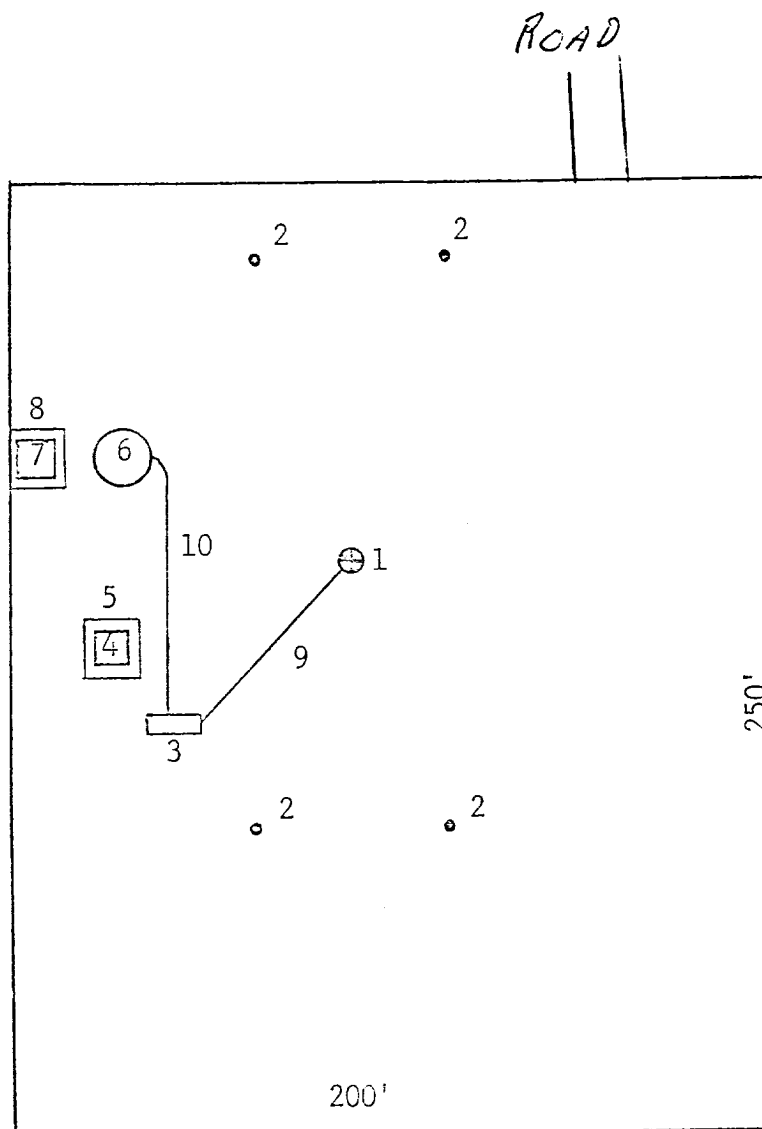


EXHIBIT IA

TRIBAL "C" NO 7-R
 NE1/4 NE1/4 SEC. 7, T-26N, R-3W
 RIO ARRIBA, N.M.



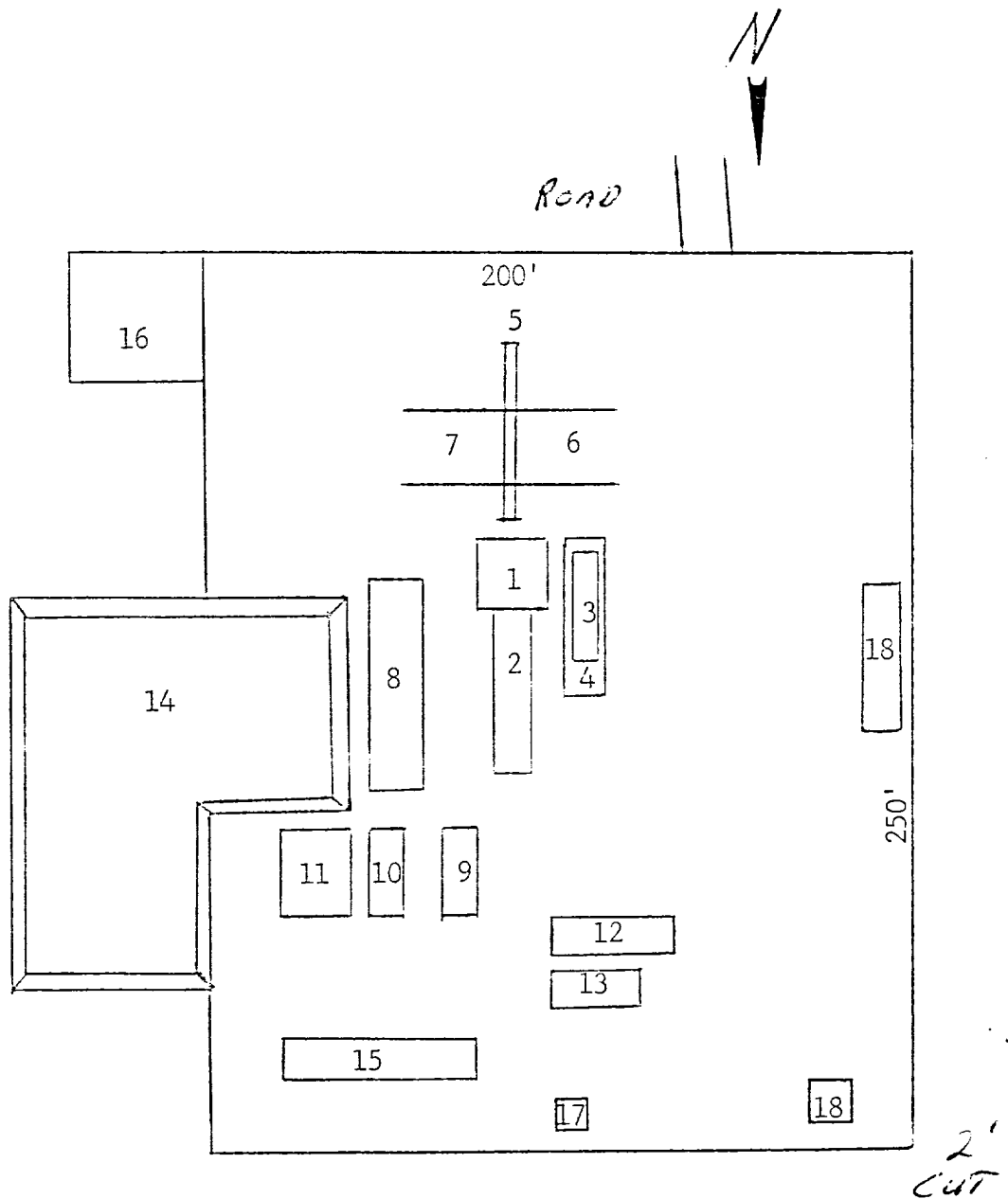
1. Well
2. Dead Men
3. Prod. Unit
4. Water Pit
5. Fence
6. 300-Bbl. Oil Tank
7. Water Pit
8. Fence
9. 2" Buried Flow Line
10. 1 1/2" Oil Line



1" equals 50'

TRIBAL "C" NO. 7-R
 NE/A NE/A SEC. 5 T-28N R-3W
 RIO ARriba, NM

- Sub.
- Drive In Unit
- Doghouse
- Water Tank
- Walk (Cat)
- Pipe Racks
- Pipe Racks
- Steel Working Pit
- Pump
- Pump
- Mud Storage
- Light Plant
- Change House
- Reserve Pit
- Air Compressor
- Blow Pit
- Latrine (Chemical)
- Trailer House (2)



1" equals 50'