

JICARILLA "D" NO. 11-A

SUPPLEMENT TO FORM 9-331C

1. The Geologic name of the Surface formation is, "Wasatch".
2. The estimated tops of important Geologic markers are:

A. Base of Ojo Alamo	3540 feet
B. Fruitland	3700 feet
C. Pictured Cliffs	3800 feet
D. Cliff House	5490 feet
E. Point Lookout	5950 feet
3. The estimated depths at which anticipated water, oil, gas or other mineral bearing formations which are expected to be encountered are:

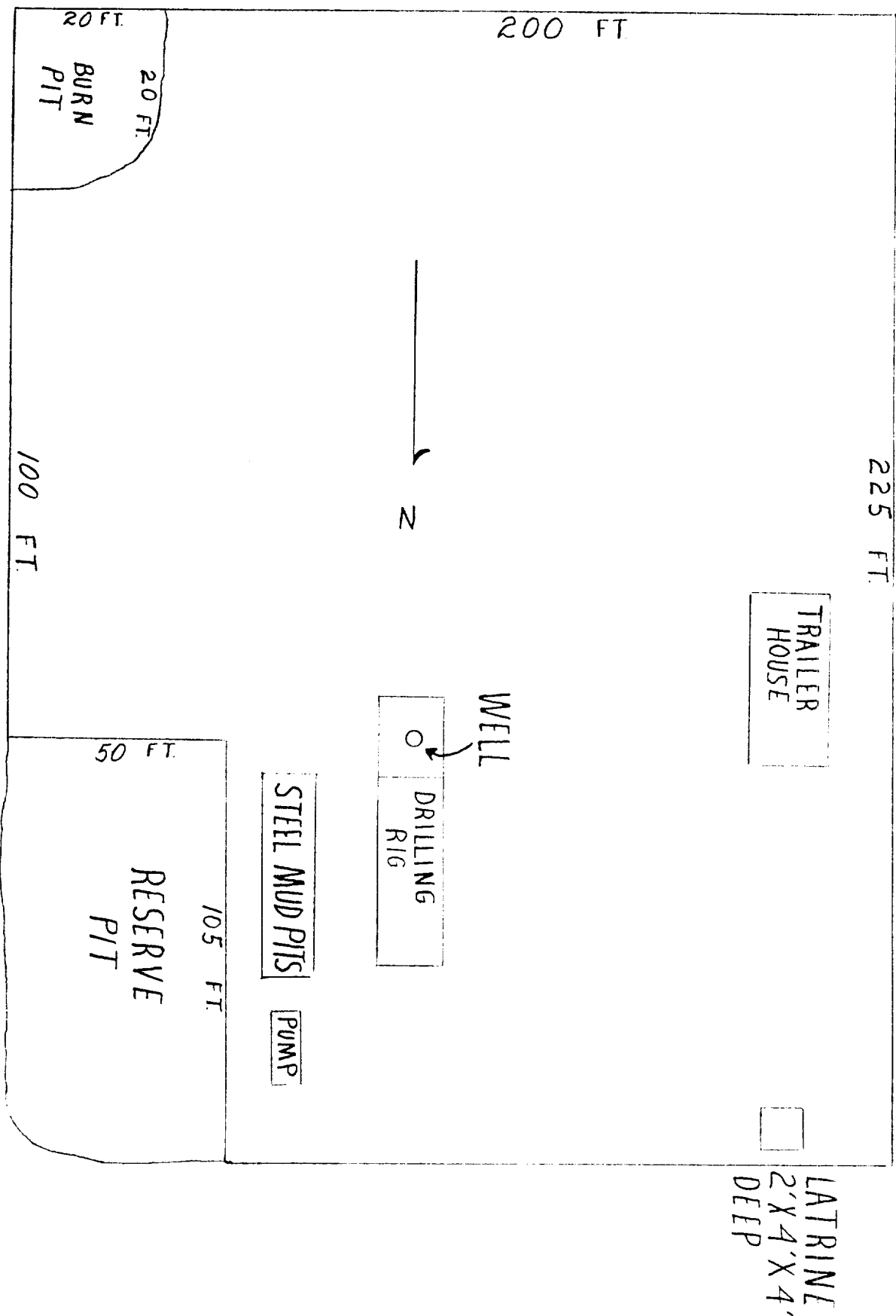
A. Base of Ojo Alamo	3540 feet - water
B. Fruitland	3700 feet - water
C. Pictured Cliffs	3800 feet - gas
D. Cliff House	5490 feet - gas
E. Point Lookout	5950 feet - gas
4. The casing program is shown on Form 9-331C and all casing is new.
5. The lessee's pressure control equipment schematics are attached along with minimum specifications, testing procedures and frequencies.
6. The type, estimated volumes and characteristics of the circulating mediums are as follows:

A. From 0 feet to 200 feet - Natural mud.
B. From 200 feet to 4070 feet - Permaloid non dispersed mud containing 167 sx of gel, 67 sx of permaloid and 10 sx of C.M.C.
C. From 4070 feet to 6100 feet - Air
7. The auxiliary equipment to be used will be floats at the bit and a sub on the floor with a full opening valve to be stabbed into the drill pipe when the Kelly is not in the string.
8. This well is in a highly developed area; therefore, we will not have a testing or coring program. The logging program is as follows:

A. E.S. Induction
B. Gamma Ray Density
C. Gamma Ray Correlation
D. Cement Bond or Temperature
9. There are no abnormal pressures, temperatures or hydrogen sulfide problems expected in this highly developed area.
10. The anticipated starting date of this well is August 5, 1978.

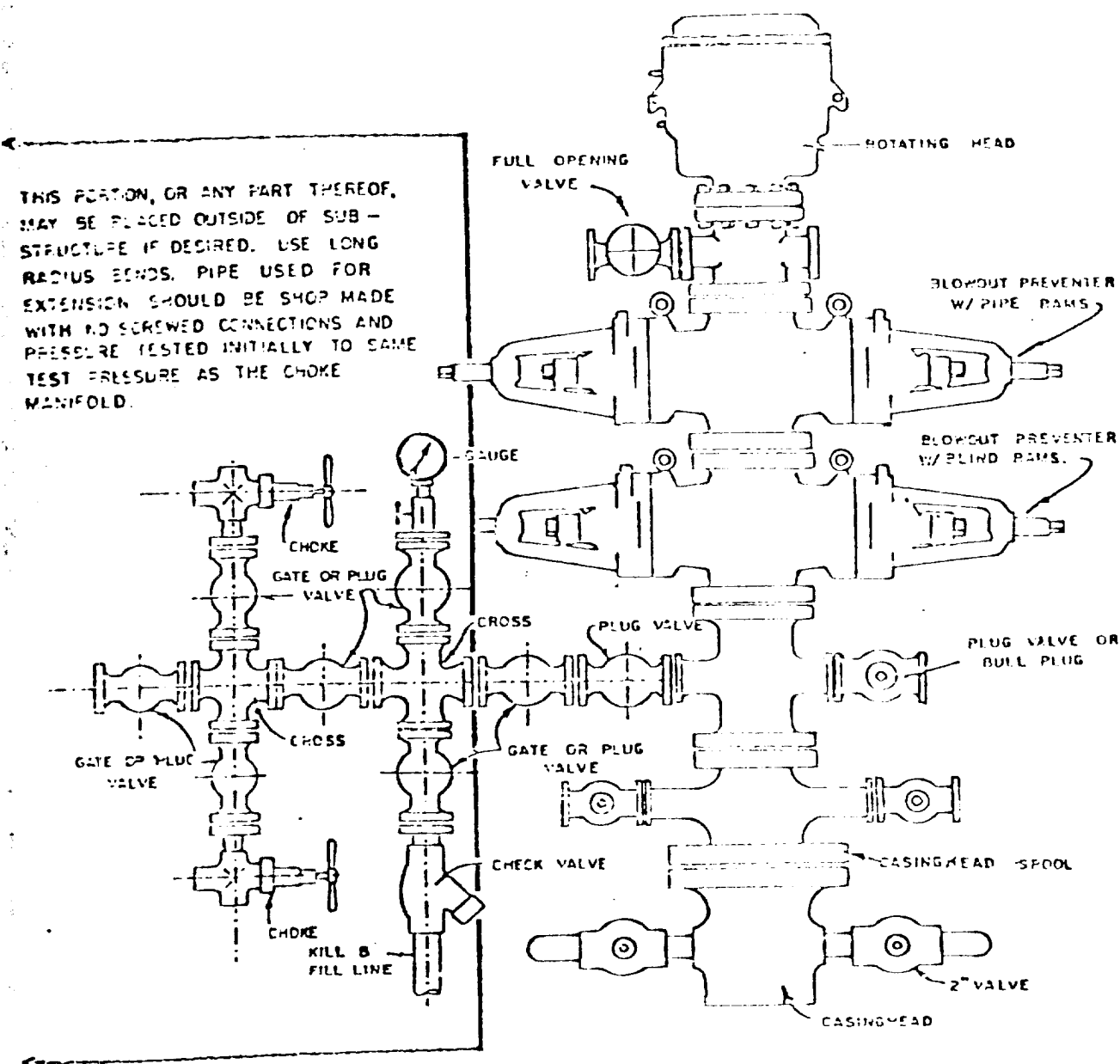
SUPRON ENERGY CORPORATION
JTCARILLA "n" NO. 11-A

790 Feet from the South line and 790 Feet from the East line of
Section 29, Township 26 North, Range 3 West, N.M.P.M., Rio Arriba
County, New Mexico.

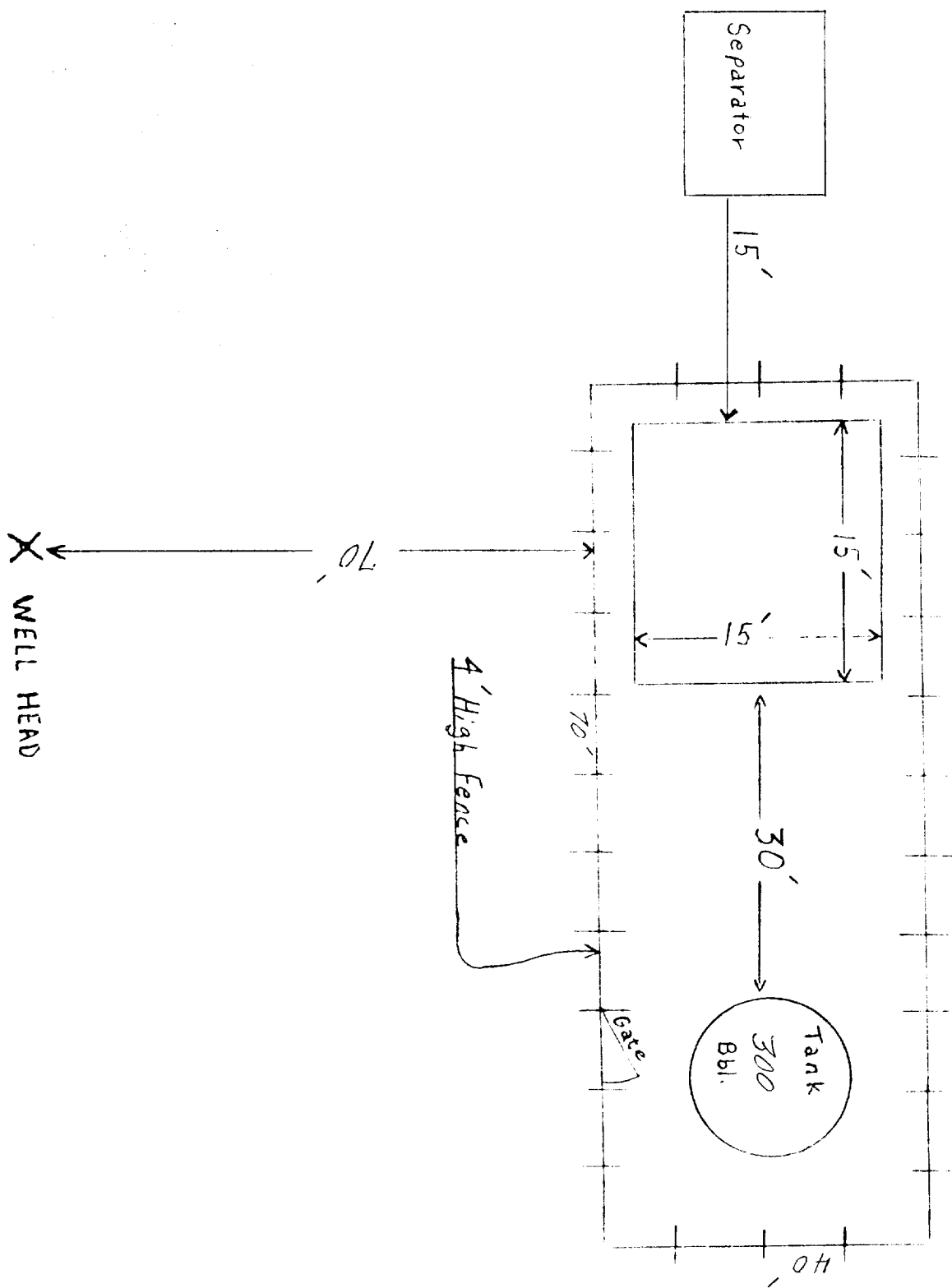


Blowout Preventer will be tested daily and prior to drilling out with the results to be logged on the drillers report.

The B.O.P. and all valve and fittings are rated at 3000 psi working pressure, and hydraulically operated



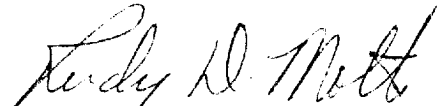
BLOWOUT PREVENTER HOOKUP



SUPRON ENERGY CORPORATION
POST OFFICE BOX 808
FARMINGTON, NEW MEXICO 87401

I hereby certify that I, or persons under my direct supervision, have inspected the proposed drillsite and access route; that I am familiar with the conditions which presently exist; that the statements made in this plan are, to the best of my knowledge, true and correct; and, that the work associated with the operations proposed herein will be performed by SUPRON ENERGY CORPORATION and its contractors subcontractors in conformity with this plan and the terms and conditions under which it is approved.

SUPRON ENERGY CORPORATION



Rudy D. Motto
Area Superintendent
Phone: 325-3587