

UNITED STATES
DEPARTMENT OF THE INTERIOR
GEOLOGICAL SURVEY

30-039-21803

5. LEASE DESIGNATION AND SERIAL NO.

6. IF INDIAN, ALLOTTEE OR TRIBE NAME

Jicarilla Contract #96

7. UNIT AGREEMENT NAME

8. FARM OR LEASE NAME

Jicarilla H

9. WELL NO.

4-A

10. FIELD AND POOL, OR WILDCAT

Blanco Mesaverde

11. SEC., T., R., M., OR BLK. AND SURVEY OR AREA

Sec. 1, T26N, R3W

12. COUNTY OR PARISH 13. STATE

Rio Arriba N. M.

APPLICATION FOR PERMIT TO DRILL, DEEPEN, OR PLUG BACK

1a. TYPE OF WORK

DRILL ☒

DEEPEN ☐

PLUG BACK ☐

b. TYPE OF WELL

OIL WELL ☐

GAS WELL ☒

OTHER

SINGLE ZONE ☒

MULTIPLE ZONE ☐

2. NAME OF OPERATOR

Mobil Oil Corporation

3. ADDRESS OF OPERATOR

3 Greenway Plaza-East, Suite 800, Houston, Texas 77046

4. LOCATION OF WELL (Report location clearly and in accordance with any State requirements.)*

At surface 874' FSL & 732' FEL Section 1, T26N, R3W

At proposed prod. zone

Same as surface

14. DISTANCE IN MILES AND DIRECTION FROM NEAREST TOWN OR POST OFFICE*

15. DISTANCE FROM PROPOSED*

LOCATION TO NEAREST PROPERTY OR LEASE LINE, FT. (Also to nearest drlg. unit line, if any)

732

16. NO. OF ACRES IN LEASE

2530.72

17. NO. OF ACRES ASSIGNED TO THIS WELL

320 (2 wells) 312.70

18. DISTANCE FROM PROPOSED LOCATION* TO NEAREST WELL, DRILLING, COMPLETED, OR APPLIED FOR, ON THIS LEASE, FT.

1881'

19. PROPOSED DEPTH

6250

20. ROTARY OR CABLE TOOLS

Rotary

21. ELEVATIONS (Show whether DF, RT, GR, etc.)

7085' - Ground

22. APPROX. DATE WORK WILL START*

As soon as possible

23. PROPOSED CASING AND CEMENTING PROGRAM

SIZE OF HOLE	SIZE OF CASING	WEIGHT PER FOOT	SETTING DEPTH	QUANTITY OF CEMENT
12-1/4"	8-5/8" (new)	20# - Misco	0- 300'	(1) Circulate to surface
7-7/8"	4-1/2" (new)	9.5# - K-55	0-6350'	(2) Circulate to surface

CEMENTING PROGRAM

- Class C cement with 2% CaCl₂
- Cement in 2 stages using lite weight filler cement in the upper stage. In the lower stage a lite weight cement will be used tailed in with 250 sx. neat.

MUD PROGRAM

Depth	Type of Mud	Weight	Viscosity	Water Loss
0'- 300'	Spud	8.8		
300'-6350'	Fresh Water Gel	8.8-9.1	30-50	10 c.c.

BLOWOUT PREVENTER PROGRAM ATTACHED

IN ABOVE SPACE DESCRIBE PROPOSED PROGRAM: If proposal is to deepen or plug back, give data on present productive zone and proposed new productive zone. If proposal is to drill or deepen directionally, give pertinent data on subsurface locations and measured and true vertical depths. Give blowout preventer program, if any.

24.

SIGNED

A.D. Bond

A.D. Bond

TITLE

Regulatory Engr. Coordinator

DATE

May 17, 1978

(This space for Federal or State office use)

PERMIT NO.

APPROVAL DATE

APPROVED BY

TITLE

DATE

CONDITIONS OF APPROVAL, IF ANY:

RECEIVED

MAY 24 1978

*See Instructions On Reverse Side

U. S. GEOLOGICAL SURVEY
DURANGO, COLO.

X 11111 - 789

NEW MEXICO OIL CONSERVATION COMMISSION
WELL LOCATION AND ACREAGE DEDICATION PLAT

Form C-102
Supersedes C-128
Effective 1-1-65

All distances must be from the outer boundaries of the Section.

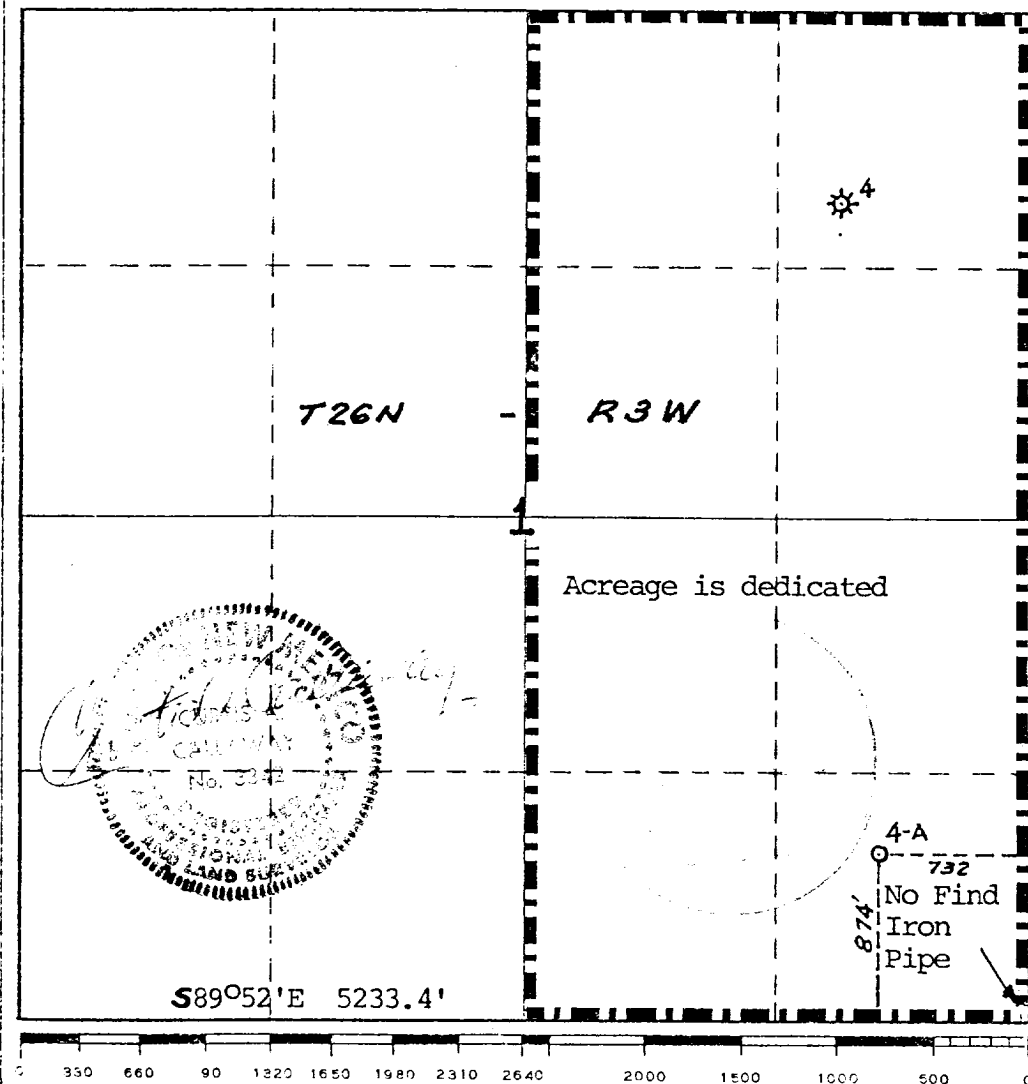
Operator Mobil Oil Corporation			Lease Jicarilla H		Well No. 4-A
Unit Letter P	Section 1	Township 26N	Range 3W	County Rio Arriba	
Actual Footage Location of Well: 874' feet from the South line and 732' feet from the East line					
Ground Level Elev. 7085'	Producing Formation Mesaverde		Pool Blanco Mesaverde		Dedicated Acreage: 320 (2 wells) Acres

1. Outline the acreage dedicated to the subject well by colored pencil or hachure marks on the plat below.
2. If more than one lease is dedicated to the well, outline each and identify the ownership thereof (both as to working interest and royalty).
3. If more than one lease of different ownership is dedicated to the well, have the interests of all owners been consolidated by communitization, unitization, force-pooling, etc?

☐ Yes ☐ No If answer is "yes," type of consolidation _____

If answer is "no," list the owners and tract descriptions which have actually been consolidated. (Use reverse side of this form if necessary.) _____

No allowable will be assigned to the well until all interests have been consolidated (by communitization, unitization, forced-pooling, or otherwise) or until a non-standard unit, eliminating such interests, has been approved by the Commission.



CERTIFICATION

I hereby certify that the information contained herein is true and complete to the best of my knowledge and belief.

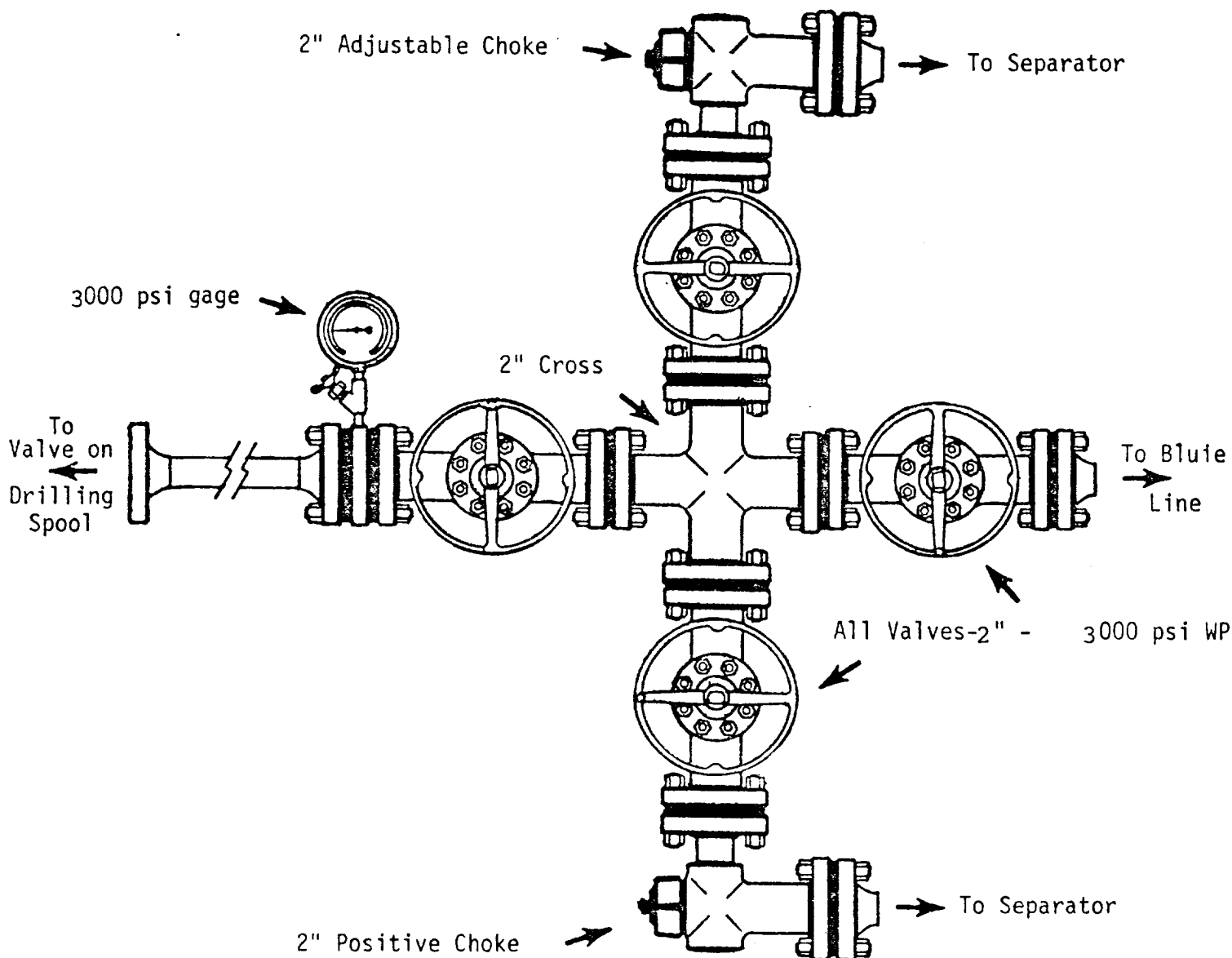
Name
A. D. Bond
Position
Regulatory Engr. Coord.
Company
Mobil Oil Corporation
Date
May 17, 1978

I hereby certify that the well location shown on this plat was plotted from field notes of actual surveys made by me or under my supervision, and that the same is true and correct to the best of my knowledge and belief.

Date Surveyed
Feb. 17, 1978
Registered Professional Engineer and/or Land Surveyor

Curtis A. Callaway
Certificate No.
3342

PROPOSED CHOKE MANIFOLD
(MINIMUM REQUIREMENTS)
8-5/8 " CASING STRING



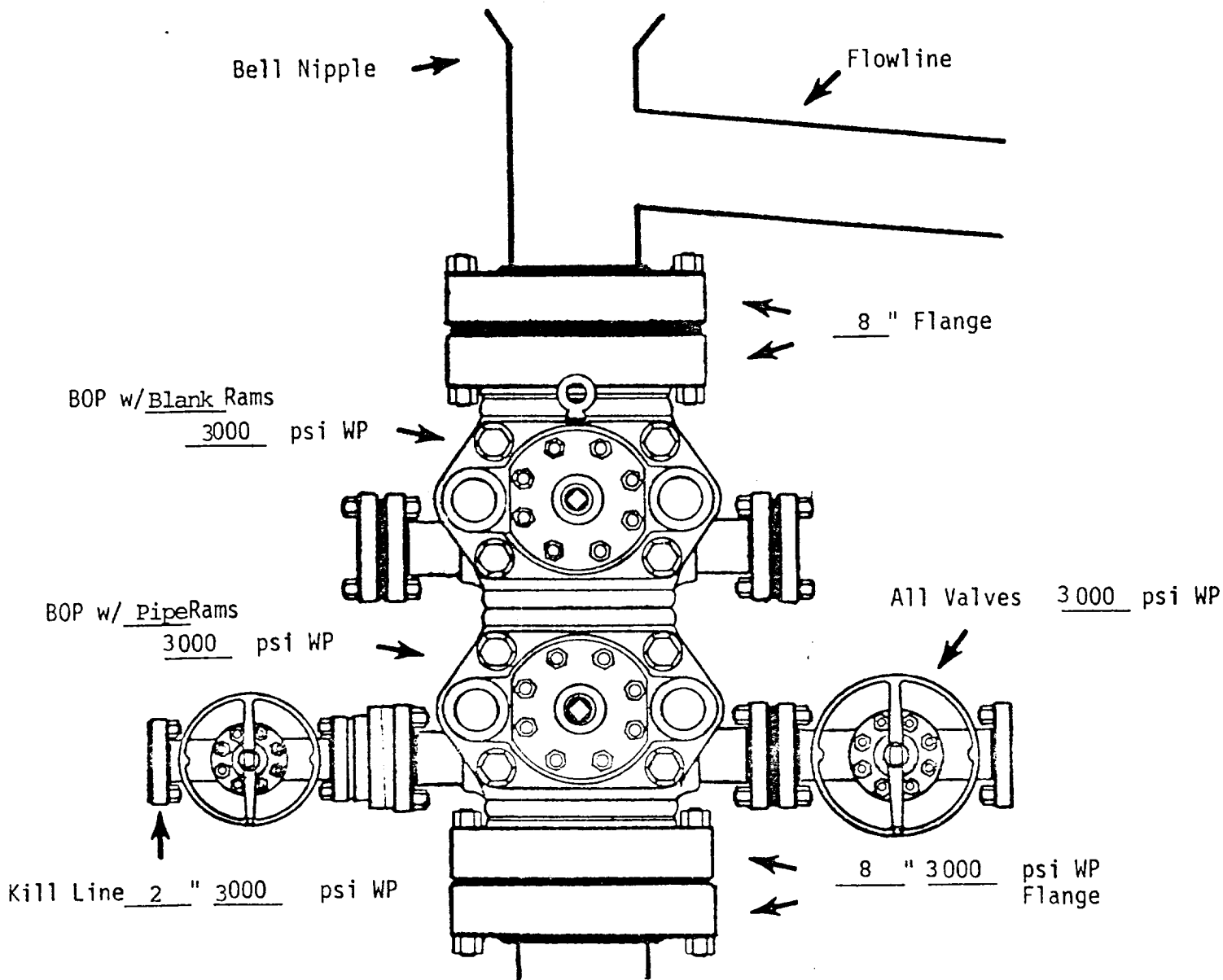
Mobil Oil Corporation
Houston E&P Division

LEASE Jicarilla H

WELL 4-A

COUNTY De Baca STATE N.M.

PROPOSED BOP STACK
8-5/8 " CASING



Mobil Oil Corporation
Houston E&P Division

LEASE Jicarilla H

WELL 4-A

COUNTRY Dia. Arriba STATE N.M.

MOBIL OIL CORPORATION
SURFACE USE AND OPERATIONS PLAN
JICARILLA "H" WELL #4-A
874' FSL & 732' FEL
SECTION 1, T-26N, R-3W
RIO ARriba COUNTY, NEW MEXICO

SURFACE USE AND OPERATIONS PLAN

1. EXISTING ROADS (See attached Map "A")

No improvements will be required to existing roads.

2. PLANNED ACCESS ROADS

No new access roads will be required

3. LOCATION OF EXISTING WELLS

See attached map "A"

4. LOCATION OF TANK BATTERIES, PRODUCTION FACILITIES, AND PRODUCTION GATHERING AND SERVICE LINES

Separation facilities as required will be located at the well site.

5. LOCATION AND TYPE OF WATER SUPPLY

Water for drilling purposes will be trucked from off-lease sources.

6. SOURCE OF CONSTRUCTION MATERIALS

Native soils will be utilized for surfacing of proposed location site. This surface will be watered and compacted and no material will be hauled to the site.

7. METHODS FOR HANDLING WASTE DISPOSAL

Waste will be burned, buried, and/or hauled from the well site. Buried waste will have a minimum cover of 5'. Septic tanks at trailer houses and chemical toilets will be cleaned periodically and that sewage hauled away for disposal at an off-lease location.

8. ANCILLARY FACILITIES

No ancillary facilities will be required at this time.

9. WELL SITE LAYOUT

See attached map "B"

Surface Use and Operations Plan

Page 2

10. PLANS FOR RESTORATION OF THE SURFACE

All excess excavation from construction of road and location site shall be stockpiled off-site. When all drilling and production activities have been completed, this stockpiled material shall be utilized in the reshaping of the location site to it's original contour. The reserve pit shall be filled and reshaped to it's original contour after pits have dried sufficiently to permit equipment operation.

After restoration activities have been completed, the location site shall be re-seeded with a seed mixture and soil additive as recommended by the BLM Representative. Restoration activities shall begin within 90 days after drilling and production activities cease, and shall be completed within 30 days from that date.

The Lessee further covenants and agrees that all of soil clean-up and restoration activities shall be done and performed in a workmanlike manner and in strict conformity with this surface use plan.

11. OTHER INFORMATION

The well site is located on the southeast side of a low hill on a slope of about 15%. The area contains dense sage brush and sparse grass. Drainage is southeast into Tapicito Wash and will not be disturbed by this construction.

12. LESSEE'S REPRESENTATIVE

Glen W. Barb
Mobil Oil Corporation
P. O. Box 633
Midland, TX 79702

Telephone 915-684-8211

13. CERTIFICATION

I hereby certify that I, or persons directly under my supervision, have inspected the proposed drill-site; that I am familiar with the conditions that presently exist; that the statements made in this plan are, to the best of my knowledge, true and correct; and that the work associated with the operations proposed herein will be performed by a reliable contractor in conformity with this plan and the terms and conditions under which it is approved.

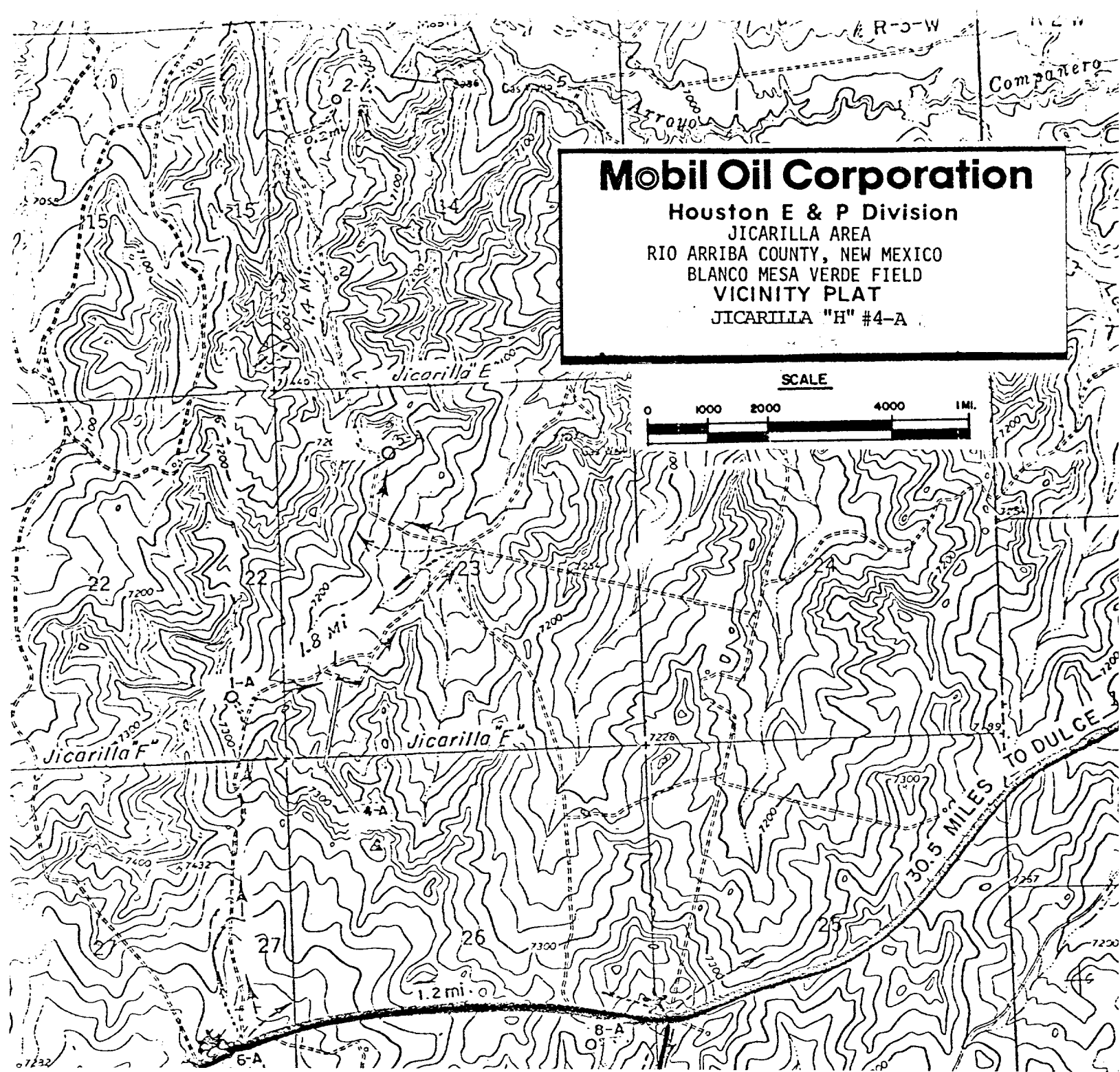
CACallaway/tb
Attachments

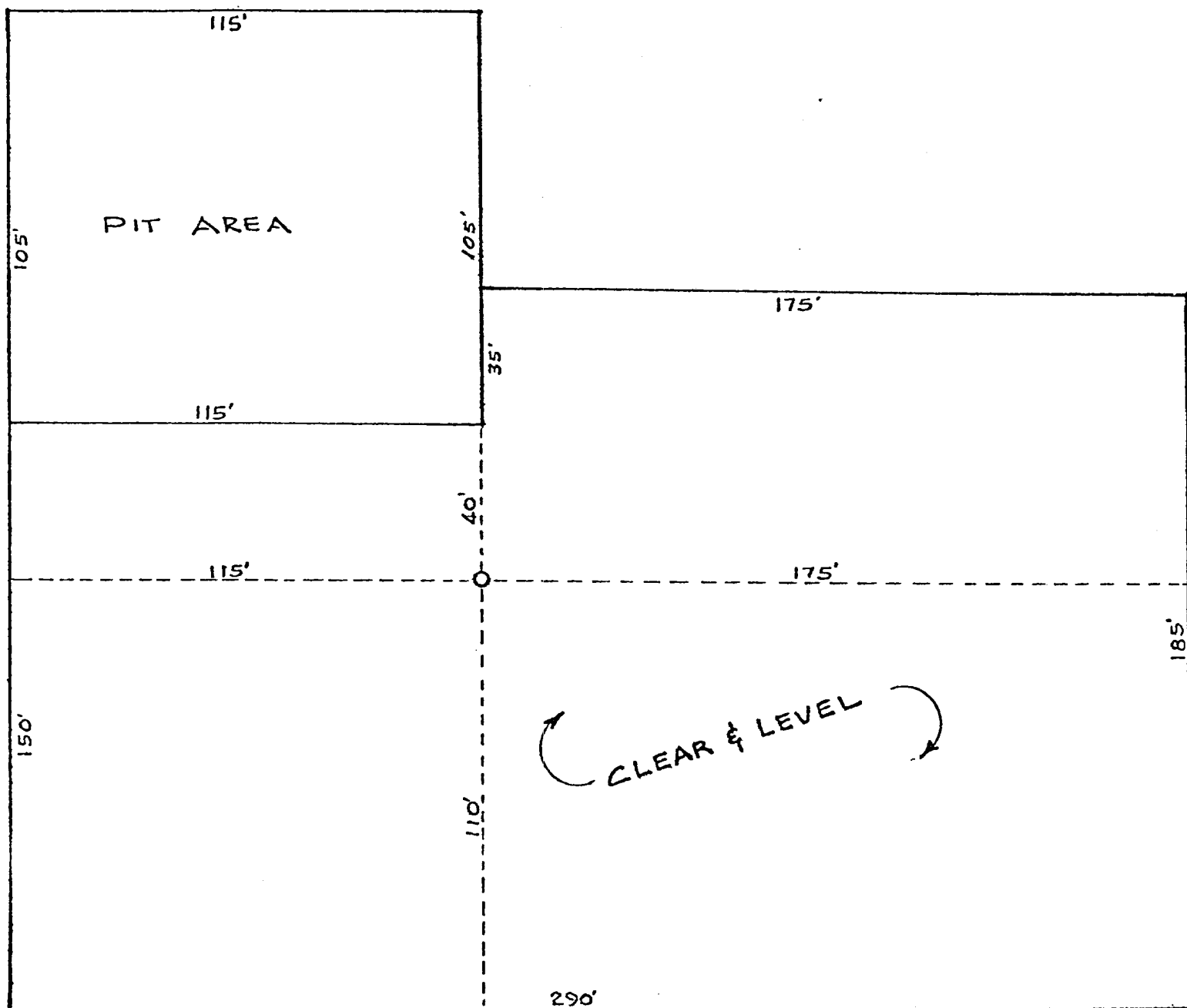

Glen W. Barb
Operations Manager

Mobil Oil Corporation

Houston E & P Division
JICARILLA AREA
RIO ARriba COUNTY, NEW MEXICO
BLANCO MESA VERDE FIELD
VICINITY PLAT
JICARILLA "H" #4-A

SCALE





MAP "B"

Mobil Oil Corporation

Houston E&P Division

Jicarilla H, Well #4-A
 Blanco Mesa Verde Pool
 Rio Arriba County, New Mexico

Scale 1"=40'

Date
 Drawn
 Checked
 Approved
 Revised

MOBIL OIL CORPORATION

LEASE: Jicarilla H

WELL: 4-A

FIELD: Blanco Mesaverde

COUNTY: Rio Arriba

STATE: New Mexico

TEN POINT WELL CONTROL & RESOURCE PROTECTION DATA

1. The geologic name of the surface formation San Jose.
2. The estimated tops of important geologic markers.

<u>Formation Name</u>	<u>Depth (Top)</u>
<u>Ojo Alamo</u>	<u>3500'</u>
<u>Pictured Cliffs</u>	<u>3890'</u>
<u>Lewis Shale</u>	<u>3950'</u>
<u>Mesaverde</u>	<u>5600'</u>

3. The estimated depth at which anticipated water, oil, gas or other mineral-bearing formations are expected to be encountered.

<u>Formation Name</u>	<u>Depth (Top)</u>	<u>Type of Mineral</u>
<u>Ojo Alamo</u>	<u>3500'</u>	<u>Water</u>
<u>Pictured Cliffs</u>	<u>3890'</u>	<u>Gas</u>
<u>Mesaverde</u>	<u>5700'</u>	<u>Oil & Gas</u>

4. The proposed casing program, including the size, grade, and weight-per-foot of each string and whether new or used. (Shown on Form 9-331C)
5. The lessee's or operator's minimum specifications for pressure control equipment which is to be used, a schematic diagram thereof showing sizes, pressure ratings (or API series), and the testing procedures and testing frequency. (See attachment)
6. The type and characteristics of the proposed circulating medium or mediums to be employed for rotary drilling and the quantities and types of mud and weighting material to be maintained.

The mud program, giving the type and characteristics of the drilling
mud proposed is attached to the Form 9-331 C. A sufficient quantity
of mud and chemicals will be maintained at the well site to meet anticipated
normal conditions, recognizing the time required to replenish supplies
from local sources.

7. The auxiliary equipment to be used, such as (1) kelly cocks, (2) floats at the bit, (3) monitoring equipment on the mud system, (4) a sub on the floor with a full opening valve to be stabbed into drill pipe when the kelly is not in the string.

Auxiliary equipment to be used will include: (1) kelly cock; and (2) a sub with a full opening valve. We do not believe there will be a need for a float at the bit on this unit.

8. Logging, coring & testing program:

<u>Log</u>	<u>Depth</u>
GR-LL-Acoustic	Surface casing to total depth
GR-Neutron-Collar	Surface casing to total depth

No coring will be done and only the Mesaverde will be tested.

9. Any anticipated abnormal pressure or temperatures expected to be encountered or potential hazards such as hydrogen sulfide gas, along with plans for mitigating such hazards.

None anticipated

10. The anticipated starting date and duration of the operations.

Starting Date: June 15 Duration of Operations 20 Days.



STATE OF NEW MEXICO
ENERGY AND MINERALS DEPARTMENT
OIL CONSERVATION DIVISION

JERRY APODACA
GOVERNOR

NICK FRANKLIN
SECRETARY

June 26, 1978

POST OFFICE BOX 2088
STATE LAND OFFICE BUILDING
SANTA FE, NEW MEXICO 87501
(505) 827-2434

Mobil Oil Corporation
Three Greenway Plaza East
Suite 800
Houston, Texas 77046

Attention: J. A. Morris

Administrative Order NSL-958

Gentlemen:

Reference is made to your application for a non-standard location for your Jicarilla "H" Well No. 4-A to be located 874 feet from the South line and 732 feet from the East line of Section 1, Township 26 North, Range 3 West, NMPM, Blanco Mesaverde Pool, Rio Arriba County, New Mexico.

By authority granted me under the provisions of Rule 104 F of the Division Rules and Regulations, the above-described unorthodox location is hereby approved.

Very truly yours,

JOE D. RAMEY,
Division Director

JDR/RLS/dr

cc: Oil Conservation Division - Aztec
Oil & Gas Engineering Committee - Hobbs
U. S. Geological Survey - Farmington

