

File
h.c.

February 18, 1982



Southland Royalty Company

Mr. Frank Chavez
Oil Conservation Division
1000 Rio Brazos Road
Aztec, New Mexico 87410

RE: Jicarilla 101 #1-A
1820' FSL & 1185' FEL
I - Section 1, T26N, R4W
Rio Arriba County, New Mexico
Basin Dakota/Blanco Mesa Verde

Dear Frank:

This letter is to clarify some of the confusion that has arisen on the subject well. We have been producing this well in a commingled state since September 1981. This was done to determine if the well was capable of qualifying for possible downhole commingling. The production from this well has been reported on a percentage split to each zone we felt was equitable from past production.

Since it appears the well will not qualify for downhole commingling, we are amending our production reports and submitting an application to the Minerals Management Service to isolate and test each interval.

I have attached a copy of the sundry notice which was submitted September 4, 1981 which shows the junk left in the hole during workover operations. We do not have much hope of ever clearing all this junk out, without potential permanent damage to the Dakota. If our proposed test of the Dakota shows no production from that zone we will probably file for permanent abandonment.

If you have any questions, please call.

Sincerely,

SOUTHLAND ROYALTY COMPANY

R. E. Fielder
District Engineer

REF/eg

Attachment

XC: Susan Ensor-SRC
James Smith-SRC

UNITED STATES
DEPARTMENT OF THE INTERIOR
GEOLOGICAL SURVEY

SUNDRY NOTICES AND REPORTS ON WELLS

(Do not use this form for proposals to drill or to deepen or plug back to a different reservoir. Use Form 9-331-C for such proposals.)

1. oil ☐ gas ☐ other ☐

2. NAME OF OPERATOR

Southland Royalty Company

3. ADDRESS OF OPERATOR

P.O. Drawer 570, Farmington, New Mexico

4. LOCATION OF WELL (REPORT LOCATION CLEARLY. See space 17 below.)

AT SURFACE: 1820' FSL & 1185' FEL

AT TOP PROD. INTERVAL:

AT TOTAL DEPTH:

16. CHECK APPROPRIATE BOX TO INDICATE NATURE OF NOTICE, REPORT, OR OTHER DATA

REQUEST FOR APPROVAL TO:

TEST WATER SHUT-OFF ☐
FRACTURE TREAT ☐
SHOOT OR ACIDIZE ☐
REPAIR WELL ☒
PULL OR ALTER CASING ☐
MULTIPLE COMPLETE ☐
CHANGE ZONES ☐
ABANDON* ☐
(other) ☐

SUBSEQUENT REPORT OF:

☐
☐
☐
☐
☐
☐
☐
☐
☐

5. LEASE

Jicarilla 101

6. IF INDIAN, ALLOTTEE OR TRIBE NAME

7. UNIT AGREEMENT NAME

8. FARM OR LEASE NAME

Jicarilla 101

9. WELL NO.

1-A

10. FIELD OR WILDCAT NAME

Basin Dakota/Blanco Mesa Verde

11. SEC., T., R., M., OR BLK. AND SURVEY OR AREA

Section 1, T26N, R4W

12. COUNTY OR PARISH

San Juan

13. STATE

New Mexico

14. API NO.

15. ELEVATIONS (SHOW DF, KDB, AND WD)

7139' GR

(NOTE: Report results of multiple completion or zone change on Form 9-330.)

17. DESCRIBE PROPOSED OR COMPLETED OPERATIONS (Clearly state all pertinent details, and give pertinent dates, including estimated date of starting any proposed work. If well is directionally drilled, give subsurface locations and measured and true vertical depths for all markers and zones pertinent to this work.)*

SOUTHLAND ROYALTY COMPANY proposes to isolate Mesa Verde and Dakota intervals by setting a cement retainer at 6230'. Dakota production tubing will be landed in retainer and the Dakota zone flow tested. 1) If non-commercial flow is established we will pump fluid down tubing to establish injection rate. If we can pump down Dakota we propose to Plug & Abandon by squeezing through retainer with 250 sacks of Class "B" cement (Volume sufficient to fill casing to Dakota perforations plus 20 sacks). If we cannot pump down Dakota we propose to abandon the Dakota by pulling tubing out of retainer. 2) If commercial flow is established we will re-run Mesa Verde production tubing and return well to production.

NOTE: A copy of our previous sundry notice showing the junk left in the hole and a wellbore schematic are attached for your reference.

Subsurface Safety Valve: Manu. and Type _____ Set @ _____ Ft.

18. I hereby certify that the foregoing is true and correct

SIGNED R. E. Filder TITLE Dist. Engineer DATE February 18, 1982

(This space for Federal or State office use)

APPROVED BY _____ TITLE _____ DATE _____
CONDITIONS OF APPROVAL, IF ANY:

UNITED STATES
DEPARTMENT OF THE INTERIOR
GEOLOGICAL SURVEY

SUNDRY NOTICES AND REPORTS ON WELLS

(Do not use this form for proposals to drill or to deepen or plug back to a different reservoir. Use Form 9-331-C for such proposals.)

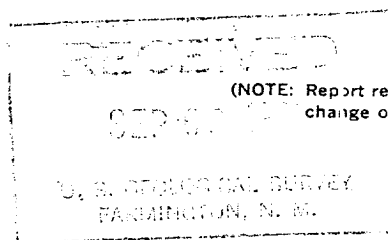
1. oil ☐ well gas ☒ well other ☐
2. NAME OF OPERATOR
Southland Royalty Company
3. ADDRESS OF OPERATOR
P.O. Drawer 570, Farmington, New Mexico 87401
4. LOCATION OF WELL (REPORT LOCATION CLEARLY. See space 17 below.)
AT SURFACE: 1820' FSL & 1185' FEL
AT TOP PROD. INTERVAL:
AT TOTAL DEPTH:
16. CHECK APPROPRIATE BOX TO INDICATE NATURE OF NOTICE, REPORT, OR OTHER DATA

REQUEST FOR APPROVAL TO:

- TEST WATER SHUT-OFF ☐
FRACTURE TREAT ☐
SHOOT OR ACIDIZE ☐
REPAIR WELL ☐
PULL OR ALTER CASING ☐
MULTIPLE COMPLETE ☐
CHANGE ZONES ☐
ABANDON* ☐
(other) ☐

SUBSEQUENT REPORT OF:

- ☐
☐
☐
☒
☐
☐
☐
☐



(NOTE: Report results of multiple completion or zone change on Form 9-330.)

5. LEASE
Jicarilla 101
6. IF INDIAN, ALLOTTEE OR TRIBE NAME
7. UNIT AGREEMENT NAME
8. FARM OR LEASE NAME
Jicarilla 101
9. WELL NO.
1-A
10. FIELD OR WILDCAT NAME
Basin Dakota/Blanco Mesa Verde
11. SEC., T., R., M., OR BLK. AND SURVEY OR AREA
Section 1, T26N, R4W
12. COUNTY OR PARISH
Rio Arriba
13. STATE
New Mexico
14. API NO
15. ELEVATIONS (SHOW DF, KDB, AND WD)
7152 KDB

17. DESCRIBE PROPOSED OR COMPLETED OPERATIONS (Clearly state all pertinent details, and give pertinent dates, including estimated date of starting any proposed work. If well is directionally drilled, give subsurface locations and measured and true vertical depths for all markers and zones pertinent to this work.)*

- 6/30-7/1/81 Southland Royalty Company pulled both tubing strings to locate source of communication between Mesa Verde and Dakota zones. Packer seals had failed.
- 7/2/81 While running 2-1/16" longstring back in hole, tubing parted dropping 175 joints of 2-1/16" tubing, 10 blast joints and a 5-1/2" retrievable packer (5802.19') in hole.
- 7/5-7/27/81 Pickup 2-7/8" workstring, attempted to recover dropped tubing. Recovered 110 joints 2-1/16" tubing and 7 blast joints (3657.94') with various fishing operations. Made decision to suspend fishing operations.
- 7/28/81 Ran 191 joints (6107.42') 1-1/2", 2.7#, J-55, IJ tubing, set at 6117'. (Fish left in hole-65 joints 2-1/16" tubing, 3 blast joints and 1 retrievable packer (2144.25')). Top of fish at 6242').

Subsurface Safety Valve: Manu. and Type _____ Set @ _____ Ft.

18. I hereby certify that the foregoing is true and correct

SIGNED P. E. Fielder TITLE District Engineer DATE September 4, 1981

(This space for Federal or State office use)

ACCEPTED FOR RECORD

APPROVED BY _____ TITLE _____ DATE _____
CONDITIONS OF APPROVAL, IF ANY:

OPERATOR

*See Instructions on Reverse Side

SEP 15 1981

FARMINGTON DISTRICT

BY KLB

Schematic - Present Condition

JICARILLA 101 #1A -

