

UNITED STATES
DEPARTMENT OF THE INTERIOR
GEOLOGICAL SURVEY

APPLICATION FOR PERMIT TO DRILL, DEEPEN, OR PLUG BACK

1a. TYPE OF WORK

DRILL ☒DEEPEN ☐PLUG BACK ☐

b. TYPE OF WELL

OIL
WELL ☐GAS
WELL ☐

OTHER

SINGLE
ZONE ☒MULTIPLE
ZONE ☐

2. NAME OF OPERATOR

Oxy Petroleum, Inc.

3. ADDRESS OF OPERATOR

5000 Stockdale Hwy, Bakersville, California 93309

4. LOCATION OF WELL (Report location clearly and in accordance with any State requirements.)

At surface

1550' FSL & 1530' FEL

At proposed prod. zone

14. DISTANCE IN MILES AND DIRECTION FROM NEAREST TOWN OR POST OFFICE*

15. DISTANCE FROM PROPOSED*

LOCATION TO NEAREST
PROPERTY OR LEASE LINE, FT.
(Also to nearest drlg. unit line, if any)

16. NO. OF ACRES IN LEASE

2557.76

17. NO. OF ACRES ASSIGNED
TO THIS WELL

320

18. DISTANCE FROM PROPOSED LOCATION*
TO NEAREST WELL, DRILLING, COMPLETED,
OR APPLIED FOR, ON THIS LEASE, FT.

19. PROPOSED DEPTH

6035

20. ROTARY OR CABLE TOOLS

Rotary

21. ELEVATIONS (Show whether DF, RT, GR, etc.)

6948 G.L.

22. APPROX. DATE WORK WILL START*

January 10, 1979

23.

PROPOSED CASING AND CEMENTING PROGRAM

SIZE OF HOLE	SIZE OF CASING	WEIGHT PER FOOT	SETTING DEPTH	QUANTITY OF CEMENT
13 3/4	9 5/8	36	250	200 sk
8 3/4	7	23#	3700	300 sk
6 1/4	4 1/2	10.5#	6035	350 sk.

See Attachments.

Gas under this lease is dedicated to a contract.

RECEIVED
JAN 10 1979

IN ABOVE SPACE DESCRIBE PROPOSED PROGRAM: If proposal is to deepen or plug back, give data on present productive zone and proposed new productive zone. If proposal is to drill or deepen directionally, give pertinent data on subsurface locations and measured and true vertical depths. Give blowout preventer program, if any.

24.

SIGNED

John Alexander

TITLE Agent

DATE 1-8-79

(This space for Federal or State office use)

PERMIT NO.

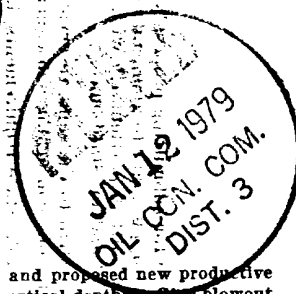
APPROVAL DATE

APPROVED BY

TITLE

DATE

CONDITIONS OF APPROVAL, IF ANY:

ok Frank

**NEW MEXICO OIL CONSERVATION COMMISSION
WELL LOCATION AND ACREAGE DEDICATION PLAT**

Form C-102
Supersedes C-128
Effective 1-1-65

All distances must be from the outer boundaries of the Section.

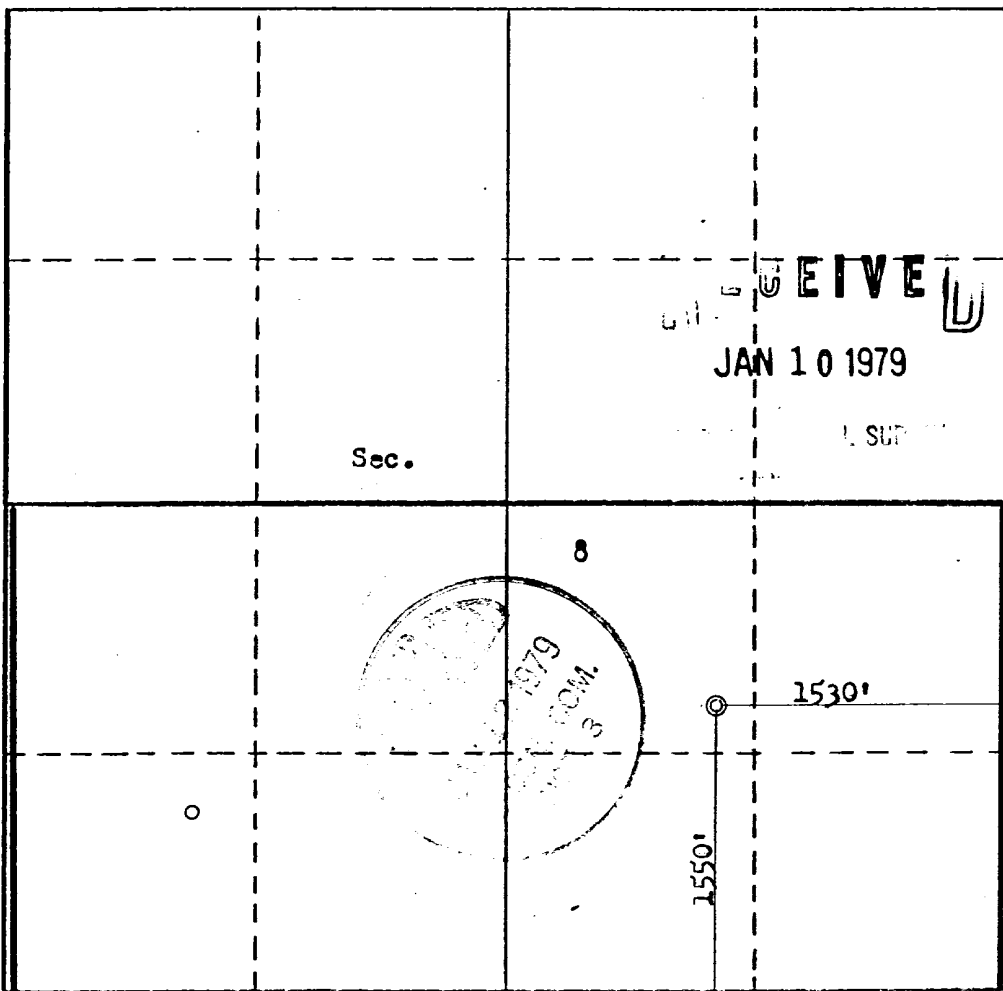
Operator OXY PETROLEUM INCORPORATED			Lease JICARILLA WEST		Well No. 7A
Unit Letter J	Section 8	Township 26N	Range 5W	County RIO ARriba	
Actual Footage Location of Well: 1550 feet from the South line and 1530 feet from the East line					
Ground Level Elev. 6948	Producing Formation Mesa Verde	Pool Blanco Mesa Verde		Dedicated Acreage: 320 Acres	

1. Outline the acreage dedicated to the subject well by colored pencil or hachure marks on the plat below.
2. If more than one lease is dedicated to the well, outline each and identify the ownership thereof (both as to working interest and royalty).
3. If more than one lease of different ownership is dedicated to the well, have the interests of all owners been consolidated by communitization, unitization, force-pooling, etc?

☐ Yes ☐ No If answer is "yes," type of consolidation _____

If answer is "no," list the owners and tract descriptions which have actually been consolidated. (Use reverse side of this form if necessary.) _____

No allowable will be assigned to the well until all interests have been consolidated (by communitization, unitization, forced-pooling, or otherwise) or until a non-standard unit, eliminating such interests, has been approved by the Commission.



CERTIFICATION

I hereby certify that the information contained herein is true and complete to the best of my knowledge and belief.

John Alexander

Name
John Alexander

Position
Agent

Company
Oxy Petroleum, Inc.

Date
January 8, 1979

I hereby certify that the well location shown on this plat was plotted from field notes of actual surveys made by me or under my supervision, and that the same is true and correct to the best of my knowledge and belief.

Date Surveyed
January 2, 1979

Registered Professional Engineer,
and/or Land Surveyor

Fred B. Kerr Jr.
Fred B. Kerr Jr.

Certificate No.
3950

0 330 660 990 1320 1650 1980 2310 2640 2970 3300 3630 3960 4290 4620 4950 5280 5610 5940 6270 6600

OXY PETROLEUM, INC.
FORMATION INFORMATION AND DRILLING PRACTICES

Jicarilla West 7A
1550' FSL & 1530' FEL
Sec 8-26N-5W
Rio Arriba County, New Mexico
LEASE NUMBER: Contract 152

RECEIVED
JAN 10 1979

U.S. SUPPLY

1. SURFACE FORMATION

San Jose'

2. ESTIMATED TOPS OF IMPORTANT GEOLOGIC MARKERS

Kirtland	3104
Fruitland	3292
Pictured Cliffs	3562
Cliff House	5242
Menefee	5354
Point Lookout	5762
Mancos	5872
T.D.	6035

3. HYDROCARBON, WATER OR MINERAL BEARING FORMATIONS

5242' Gas
5354' Gas
5762' Gas

4. PROPOSED CASING PROGRAM

0-250'	9 5/8" 32.3 lb/ft. new casing. Cement with 200 sacks Class "B" cement with 2% Calcium Chloride and 1/4 lb/sk Flocele.
0-3700'	7" 20 lb/ft new casing. Cement with 150 sacks 65-35 Pozmix followed by 100 sacks Class "B" with 2% Calcium Chloride.
3700-6035'	4 1/2" 10.5 lb/ft. new casing. Cement liner with 350 sacks 50-50 Pozmix with 2% Gel, 12 1/2 lb Gilsonite per sack and 1/4 lb Flocele per sack.

5. PRESSURE CONTROL EQUIPMENT - BLOWOUT PREVENTER

The attached schematic shows the type of blowout preventer to be used while drilling. The unit will be tested to 800 psi prior to drilling from under surface pipe by pressuring through casing valves with bline ram closed. This procedure will be repeated with the pipe rams closed on a joint of drill pipe. Operation of the hydraulic system will be checked daily.

6. DRILLING FLUIDS

<u>Depth</u>	<u>Type</u>	<u>Viscosity</u>	<u>Weight</u>	<u>Fluid Loss</u>
0-250'	Gel-Lime	35-55	8.4-9.0	NC
250-3700'	Non-Dispersed	30-45	8.4-9.0	4-8
3700-6035	Air			

RECEIVED
JAN 10 1979

L. S. S.

7. AUXILIARY EQUIPMENT

- A. Bit float
- B. Rotating drilling head

8. LOGGING - CORING - DRILL STEM TESTING

LOGGING: Intermediate - IES, FDC-CNL, G-R
Liner - IES, FDC-SNL, GR

CORING: None

TESTING: No drill stem test planned. Will measure gas flows as encountered.

9. ABNORMAL TEMPERATURES, PRESSURES OR HAZARDOUS CONDITIONS

None Expected.

10. STARTING DATE

Anticipated starting date is January 10, 1979. Approximately fifteen days will be needed to build roads, location and drill to total depth. If commercial, completion will begin immediately and require about seven days to complete.

RECEIVED

JAN 10 1979

SSP



SHAFFER HYDRAULIC BLOWOUT PREVENTERS

(Patented)

TYPE LWS PREVENTERS—8", 3000 lb. & 5000 lb.—10", 5000 lb.
12", 3000 lb.—13⁵/₈", 5000 lb.—16", 3000 lb.

PARTS AND DIMENSIONAL ILLUSTRATIONS

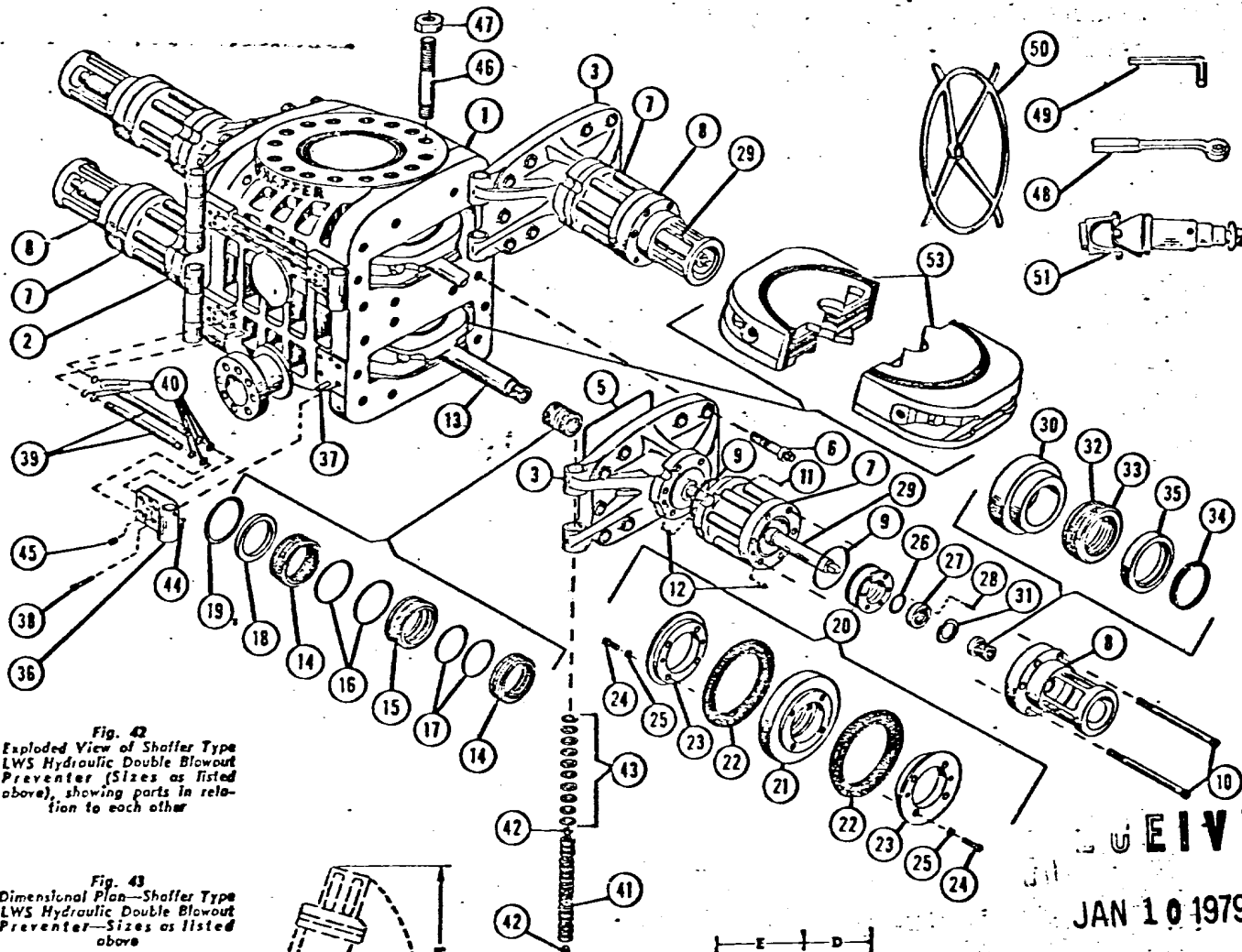


Fig. 42
Exploded View of Shaffer Type LWS Hydraulic Double Blowout Preventer (Sizes as listed above), showing parts in relation to each other

Fig. 43
Dimensional Plan—Shaffer Type LWS Hydraulic Double Blowout Preventer—Sizes as listed above

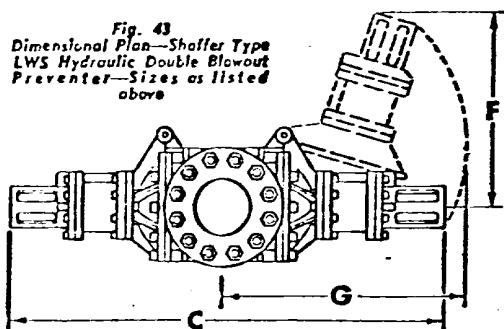
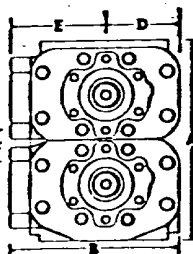


Fig. 44
Dimensional End Elevation—Shaffer Type LWS Hydraulic Double Blowout Preventer—Sizes as listed above



STANDARD ACCESSORIES

- (50) 4 Hand Wheels
- (48) 1 Door Wrench
- (49) 1 Cylinder & Cylinder Head Wrench
- (51) 4 Universal Joints

DIMENSIONAL AND ENGINEERING DATA ON ABOVE SIZES OF TYPE LWS PREVENTERS

Refer to Figs. 43 and 44

Refer to Figs. 45 and 46																					
Size	Max. Service Press. Rating psi	Test Press. psi	Vertical Core	Max. Pam. Size	Approx. Weight Lbs.		A				B	C	D	E	F	G	Closing Ratio	Opening Ratio	U.S. Gal. Fluid To Close Rams	U.S. Gal. Fluid To Open Rams	
					Studded Flange		Height														
					Single		Double														
					Single	Double	Studded Flange	Bolted Flange	Studded Flange	Bolted Flange											
8"	3,000	6,000	8"	7"	3,500	22½"	41½"	25½"	79½"	11½"	14½"	22"	48"	5.8 to 1	1.89 to 1	2.75	3.3	
8"	5,000	10,000	8"	7"	3,500	25½"	45½"	25½"	79½"	11½"	14½"	22"	48"	5.8 to 1	1.89 to 1	2.75	3.3	
10"	3,000	10,000	11"	8½"	5,000	7,000	24½"	24½"	22½"	60½"	28½"	85½"	12½"	18½"	22"	48"	5.5 to 1	1.5 to 1	3.25	2.7	
12"	3,000	6,000	12½"	10½"	6,500	24½"	47½"	31½"	92½"	13½"	18½"	27"	52"	5.5 to 1	1.89 to 1	2.53	2.8	
12½"	3,000	10,000	13½"	10½"	6,500	8,700	36½"	36½"	26"	45½"	33½"	92½"	14½"	18½"	41"	54"	5.56 to 1	1.5 to 1	3.53	2.8	
16"	2,000	4,000	16½"	13½"	8,500	36"	81"	36½"	108½"	16½"	20½"	22"	60"	5.56 to 1	1.89 to 1	3.8	3.3	

OXY PETROLEUM, INC.
SURFACE DEVELOPMENT PLAN

Jicarilla West 7A
1550' FSL & 1530' FEL
Sec 8, -26N-5W
Rio Arriba County, New Mexico
LEASE NUMBER; Contract 152

RECEIVED
JAN 10 1979

1. EXISTING ROADS (Shown in Green)

The attached topographic map shows all existing roads within one mile of the proposed location. This location will ajoin an existing Pictured Cliffs location and all existing roads will be used.

2. PLANNED ACCESS ROAD

No new access road will be needed. Existing roads are in good condition and will not have to be upgraded to handle normal drilling activity traffic.

3. LOCATION OF EXISTING WELLS

All wells (water, abandoned, disposal, and drilling) are shown and so labeled on the attached topographic map.

4. LOCATION OF TANK BATTERIES, PRODUCTION FACILITIES AND PRODUCTION, GATHERING AND SERVICE LINES.

All production facilities will be contained within the proposed location. Facilities owned and operated by Oxy are shown on the topographic map.

5. LOCATION AND TYPE OF WATER SUPPLY

Water for drilling will be trucked from several different water holes in the area. Exact location of those holes will depend on rain fall in the area

6. SOURCE OF CONSTRUCTION MATERIAL

Any construction material required for road or location will be excess material accumulated during building of such sites.

7. METHOD OF HANDLING WASTE DISPOSAL

(Refer to attached well site layout.)

All burnable material will be burned in the trash pit when conditions permit. All nonburnable material (drilling fluids, cuttings, chemicals, etc.) will be held in the reserve pit and buried when dry. Any oil produced while drilling will be trucked from the location prior to leaving the pit to dry. Pits will be fenced during dryout time, then completely back-filled with dirt prior to preparing the lcoation for production or abandonment.

8. ANCILLARY FACILITIES

No ancillary facilities are planned.

9. WELL SITE LAYOUT

The attached layout shows the drilling rig with all facilities. Cut and fill required is also indicated.

RECEIVED
JAN 10 1979

10. PLANS FOR RESTORATION OF SURFACE

Restoration of well site and access road will begin within ninety days of well completion, weather permitting.

Should the well be abandoned, the drilling site will be reshaped to its approximate former contour. The access road will be plowed and leveled. Both site and road will have top soil replaced and will be reseeded when germination can occur.

Should the well be commercial, that portion of the location not needed for operation, will be repaired as above. The portion needed for daily production operations, and the access road, will be maintained in good repair.

In either case, clean up of the site will include burning any safely burnable material, filling of all pits, carrying away of all non-burnable material and chemicals that cannot be buried. Any oil that has accumulated on the pits will be trucked away.

11. OTHER INFORMATION

General topography of the area may be seen on the attached map.

The drilling site is on the edge of an existing location. The surrounding area is covered with sage brush and native grasses. The soil is clay and sand. Small animals inhabit the area.

The surface is administered by the Bureau of Indian Affairs, and belongs to the Jicarilla Apache Tribe.

There are no occupied dwellings in the area.

There are no archaeological or cultural sites visible on the location. The archaeologist's report is forthcoming.

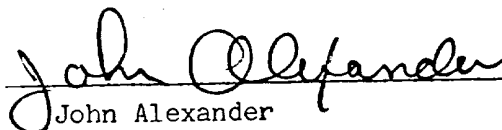
12.

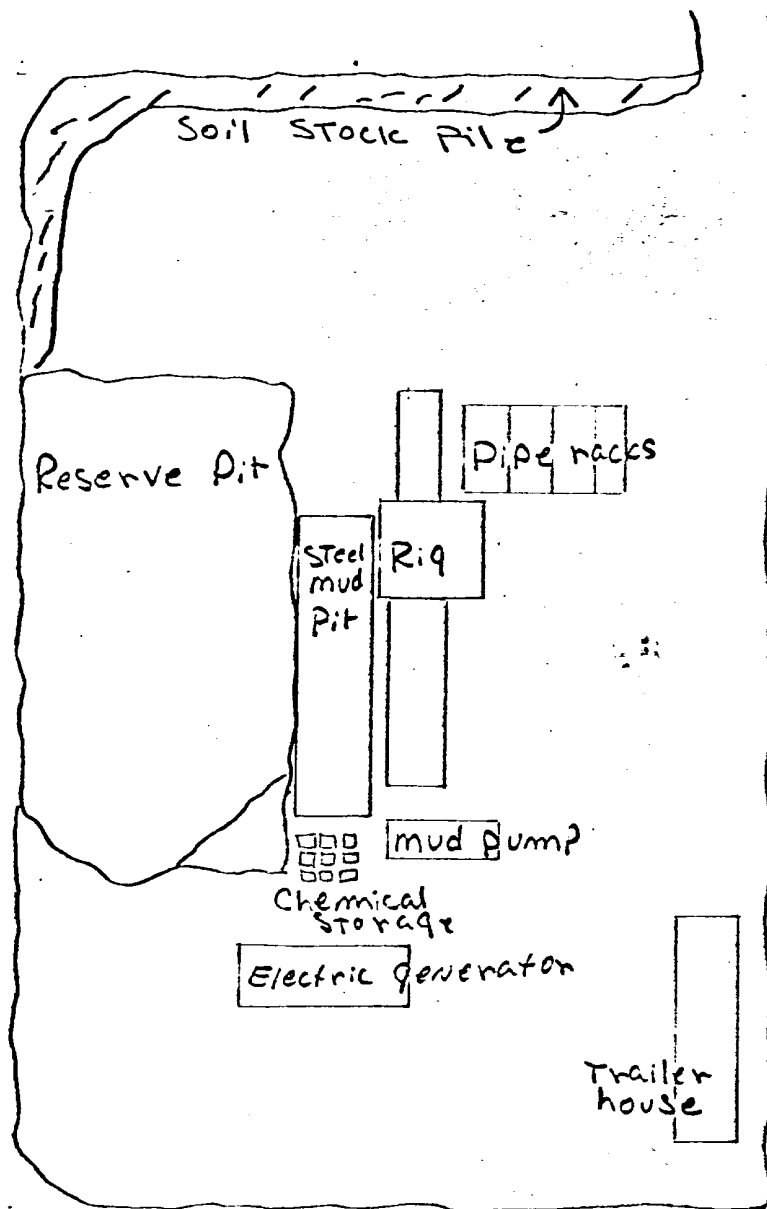
John Alexander
3E Company
P.O. Box 190
Farmington, New Mexico 87401
Phone: 505-327-4020

RECEIVED
JAN 10 1979

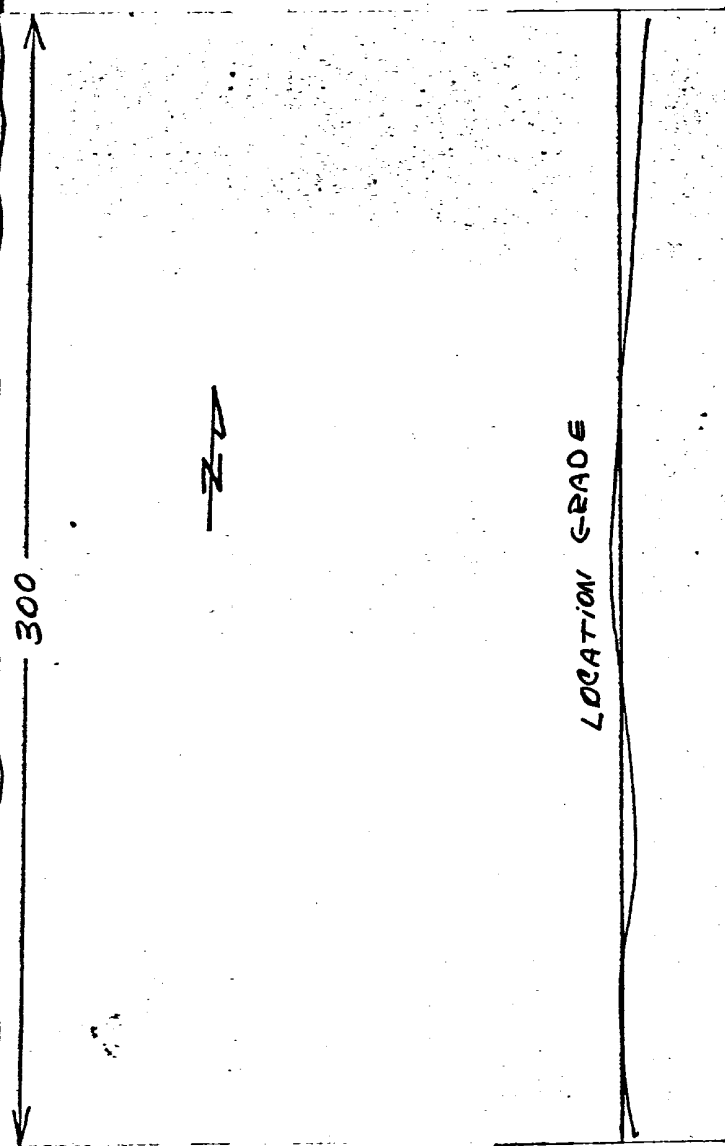
13. I hereby certify that I or persons under my direct supervision, have inspected the proposed drill site and access route; that I am familiar with the conditions which presently exist; that the statements made in the plan are to the best of my knowledge, true and correct; and, that the work associated with the operations proposed herein will be performed by Oxy Petroleum, Inc. and its contractors and sub-contractors in conformity with this plan and the terms and conditions under which it is approved.

January 8, 1979


John Alexander



horizontal scale: 1" = 50'



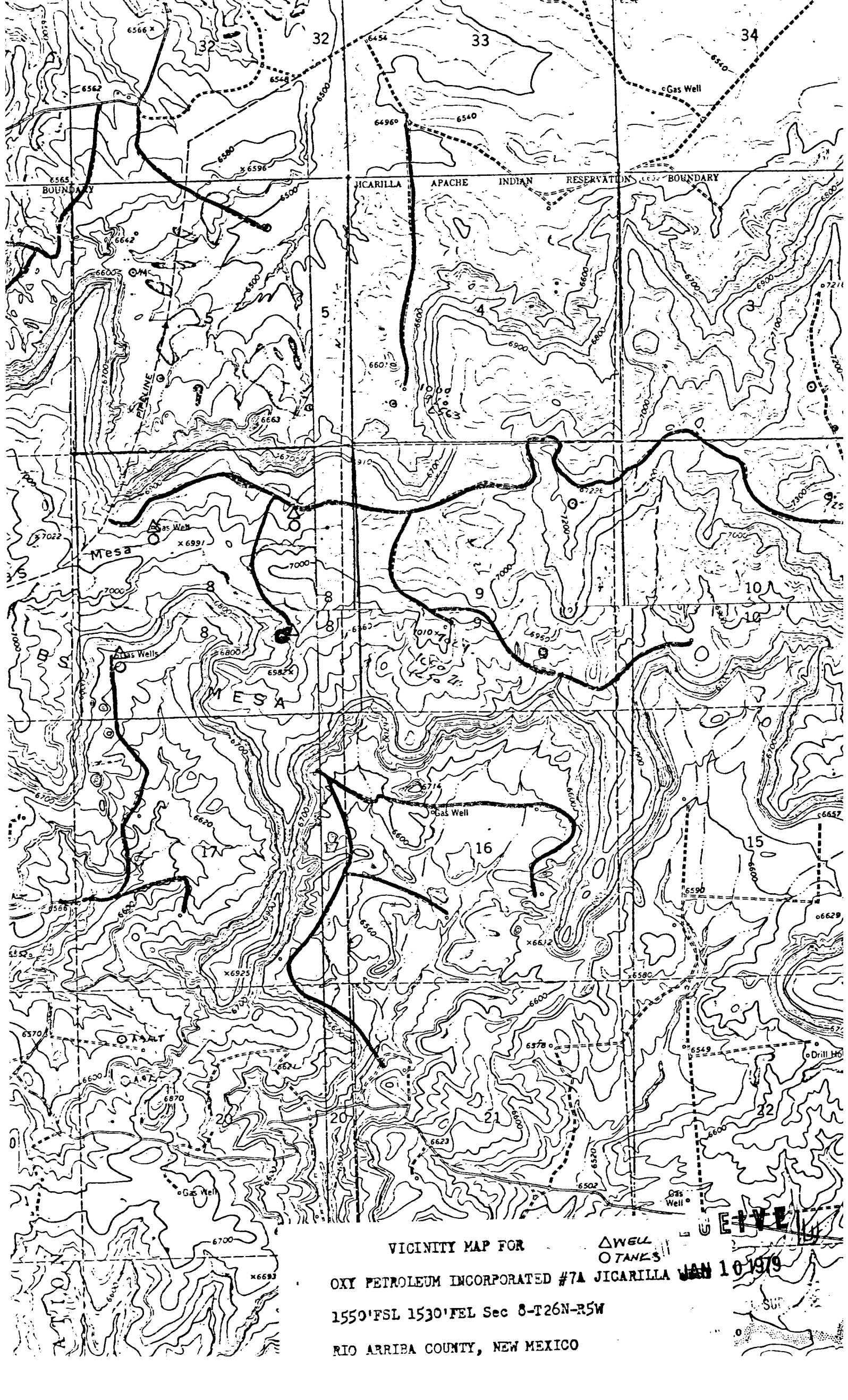
vertical scale:
1" = 10'

OXY PETROLEUM, INC.
JICARILLA WEST #7A
1550' FSL & 1530' FEL
8-26-5

RECEIVED

JAN 10 1979

RECEIVED



VICINITY MAP FOR
OXY PETROLEUM INCORPORATED #7A JICARILLA
1550'FSL 1530'FEL Sec 8-T26N-R5W
RIO ARRIBA COUNTY, NEW MEXICO

Δ WELL
○ TANKS
JAN 10 1979