

UNITED STATES  
DEPARTMENT OF THE INTERIOR  
GEOLOGICAL SURVEY

## APPLICATION FOR PERMIT TO DRILL, DEEPEN, OR PLUG BACK

## 1a. TYPE OF WORK

DRILL ☒DEEPEN ☐PLUG BACK ☐

## b. TYPE OF WELL

OIL  
WELL ☐GAS  
WELL ☒

OTHER

SINGLE  
ZONE ☒MULTIPLE  
ZONE ☐

## 2. NAME OF OPERATOR

SUPRON ENERGY CORPORATION

## 3. ADDRESS OF OPERATOR

P.O. Box 808, Farmington, New Mexico 87401

## 4. LOCATION OF WELL (Report location clearly and in accordance with any State requirements.\*)

At surface

840 feet from the North line and 1110 feet from the West line

At proposed prod. zone

Same as above

## 14. DISTANCE IN MILES AND DIRECTION FROM NEAREST TOWN OR POST OFFICE\*

One mile northeast of Ojito, New Mexico

## 15. DISTANCE FROM PROPOSED\*

LOCATION TO NEAREST  
PROPERTY OR LEASE LINE, FT.  
(Also to nearest drlg. unit line, if any)

840

## 18. DISTANCE FROM PROPOSED LOCATION\*

TO NEAREST WELL, DRILLING, COMPLETED,  
OR APPLIED FOR, ON THIS LEASE, FT.

949

## 21. ELEVATIONS (Show whether DF, RT, GR, etc.)

7075 GR.

## 16. NO. OF ACRES IN LEASE

2560

## 19. PROPOSED DEPTH

6100

17. NO. OF ACRES ASSIGNED  
TO THIS WELL

W/320

## 20. ROTARY OR CABLE TOOLS

0-6100

## 22. APPROX. DATE WORK WILL START\*

7-1-79

## 23.

## PROPOSED CASING AND CEMENTING PROGRAM

SIZE OF HOLE	SIZE OF CASING	WEIGHT PER FOOT	SETTING DEPTH	QUANTITY OF CEMENT
12-1/4"	9-5/8"	32.30	250	150 sx
8-3/4"	7"	23.00	4000	200 sx
6-1/4"	4-1/2"	10.50	6100	300 sx

We plan to drill this well to 4000 feet and run intermediate 7" casing. It will then be drilled with air or natural gas through the Mesaverde zone (approx. 6100 ft.). A 4 1/2" liner will be hung to T.D. Well will be perforated and sand - water fractured in the Mesaverde. 2-1/16" tubing will be set at about 5875 feet.

IN ABOVE SPACE DESCRIBE PROPOSED PROGRAM: If proposal is to deepen or plug back, give data on present productive zone and proposed new productive zone. If proposal is to drill or deepen directionally, give pertinent data on subsurface locations and measured and true vertical depths. Give blowout preventer program, if any.

24.

SIGNED

Kenneth E. Roddy

TITLE Production Superintendent

DATE May 9, 1979

(This space for Federal or State office use)

PERMIT NO.

APPROVAL DATE

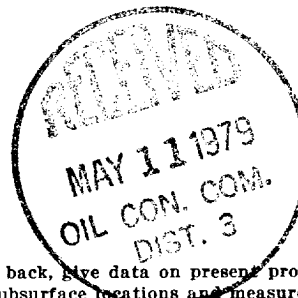
APPROVED BY

TITLE

DATE

CONDITIONS OF APPROVAL, IF ANY:

Clay



RECEIVED

MAY 10 1979

U.S. GEOLOGICAL SURVEY

## WELL LOCATION AND ACREAGE DEDICATION PLAT

Supra-Des C-32  
Effective 1-1-63

All distances must be from the outer boundaries of the Section.

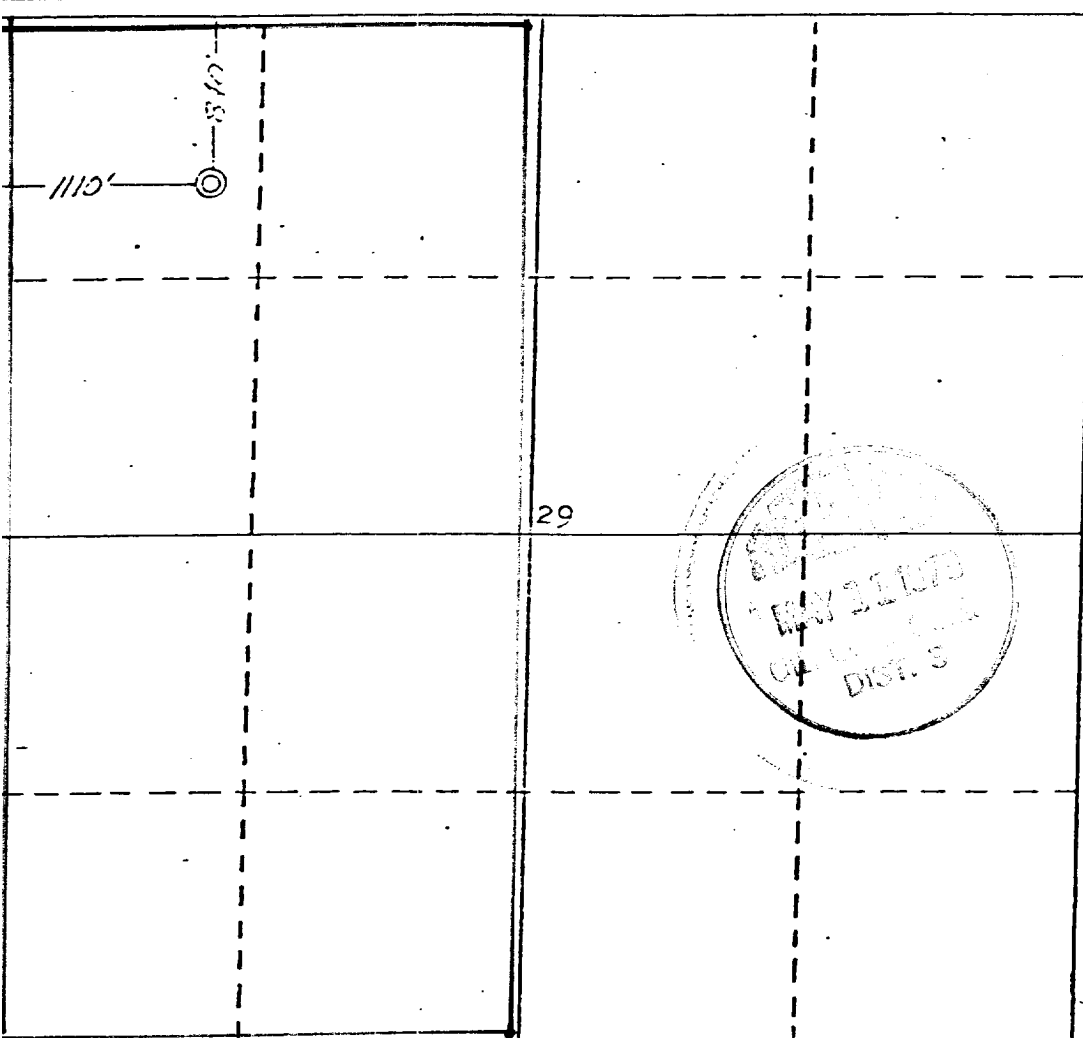
Operator <b>SUPRON ENERGY CORPORATION</b>			Lease <b>JICARILLA "D"</b>		Well No. <b>17</b>
Well Letter <b>D</b>	Section <b>29</b>	Township <b>26 NORTH</b>	Range <b>3 WEST</b>	County <b>RIO ARriba</b>	
Actual Footage Location of Well: <b>840</b> feet from the <b>NORTH</b> line and <b>1110</b> feet from the <b>WEST</b> line					
Ground Level Elev. <b>7075</b>	Producing Formation <b>MESA VERDE</b>		Pool <b>BLANCO</b>		Dedicated Acreage: <b>W1/2 320</b> Acres

1. Outline the acreage dedicated to the subject well by colored pencil or hatchure marks on the plat below.
2. If more than one lease is dedicated to the well, outline each and identify the ownership thereof (both as to working interest and royalty).
3. If more than one lease of different ownership is dedicated to the well, have the interests of all owners been consolidated by communitization, unitization, force-pooling, etc?

☐ Yes ☐ No If answer is "yes," type of consolidation \_\_\_\_\_

If answer is "no," list the owners and tract descriptions which have actually been consolidated. (Use reverse side of this form if necessary.) \_\_\_\_\_

No allowable will be assigned to the well until all interests have been consolidated (by communitization, unitization, forced-pooling, or otherwise) or until a non-standard unit, eliminating such interests, has been approved by the Commission.



## CERTIFICATION

I hereby certify that the information contained herein is true and complete to the best of my knowledge and belief.

*Rudy D. Motto*  
Name

Rudy D. Motto

Position

Area Superintendent

Company

SUPRON ENERGY CORPORATION

Date

April 10, 1979

I hereby certify that the well location shown on this plat was plotted from field notes of actual survey made by me or under my supervision, and that the same is true and correct to the best of my knowledge and belief.

Date Surveyed

4 April 1979

Registered Professional Engineer and/or Land Surveyor

*James P. Leese*  
James P. Leese

Certificate No.

1463

330 240 90 1320 1820 1920 2310 2640 2900 1500 1000 500 0



SUPRON ENERGY CORPORATION  
Jicarilla "D" No. 17  
NW $\frac{1}{4}$ NW $\frac{1}{4}$  Sec. 29, T 26 N, R 3 W  
Rio Arriba County, New Mexico

Jicarilla "D" No. 17  
Unit D, Sec. 29, T-26N, R-3W  
Rio Arriba County, New Mexico

SUPPLEMENT TO FORM 9-331C

1. The Geologic name of the surface formation is "Wasatch".
2. The estimated tops of important Geologic markers are:

A. Base of Ojo Alamo	3460
B. Top of Pictured Cliffs	3715
C. Top of Cliff House	5405
D. Top of Point Lookout	5875
3. The estimated depth at which anticipated water, oil, or other mineral - bearing formations are expected to be encountered are:

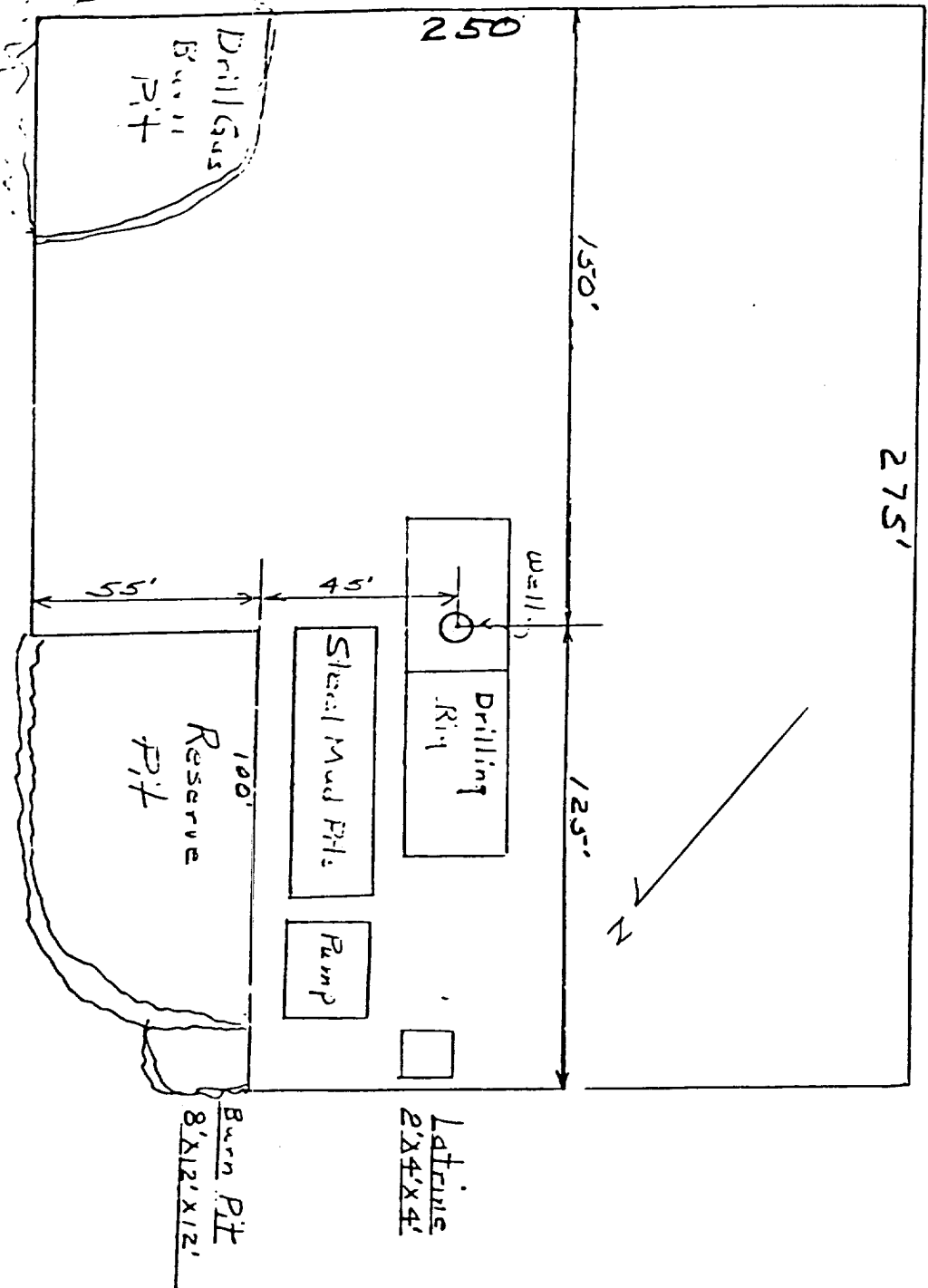
A. Base of Ojo Alamo	3460 - water
B. Top of Pictured Cliffs	3715 - gas
C. Top of Cliff House	5405 - water and gas
D. Top of Point Lookout	5875 - gas
4. The casing program is shown on form 9-331C and all casing is new.
5. The lessee's pressure - control equipment schematics are attached, along with minimum specifications, testing procedures, and frequencies.
6. The type, estimated volumes, and characteristics of the circulating media are as follows:

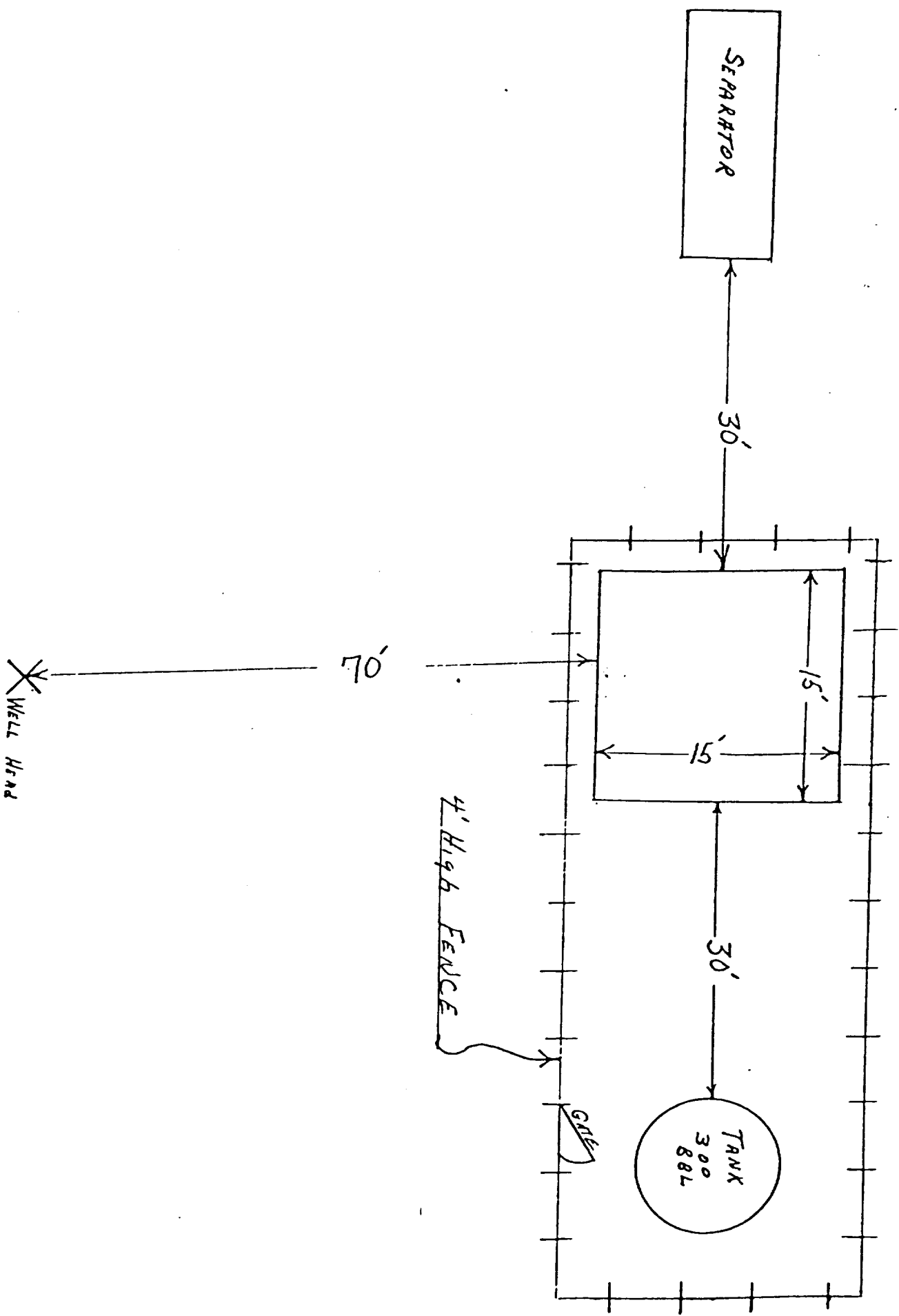
A.	0 - 250 ft. natural mud
B.	250 - 4000 ft. permaloid non-dispersed mud with 167 sx gel, 67 sx permaloid and 10 sx C.M.C.
C.	4000 - 6100 ft. air or natural gas
7. The auxiliary equipment to be used will be floats at the bit and a sub on the floor with a full-opening valve to be stabbed into the drill pipe when the kelly is not in the string.
8. This well is in an area which is partially developed; therefore we will not have a testing and coring program. The logging program will be as follows:

A.	E.S. Induction.
B.	Gamma Ray Density.
C.	Gamma Ray Correlation.
D.	Cement Bond Log.
9. We do not expect to find any abnormal pressures, temperatures or hydrogen sulphide problems in this partially - developed area.
10. The anticipated starting date for this well is 7-1-79

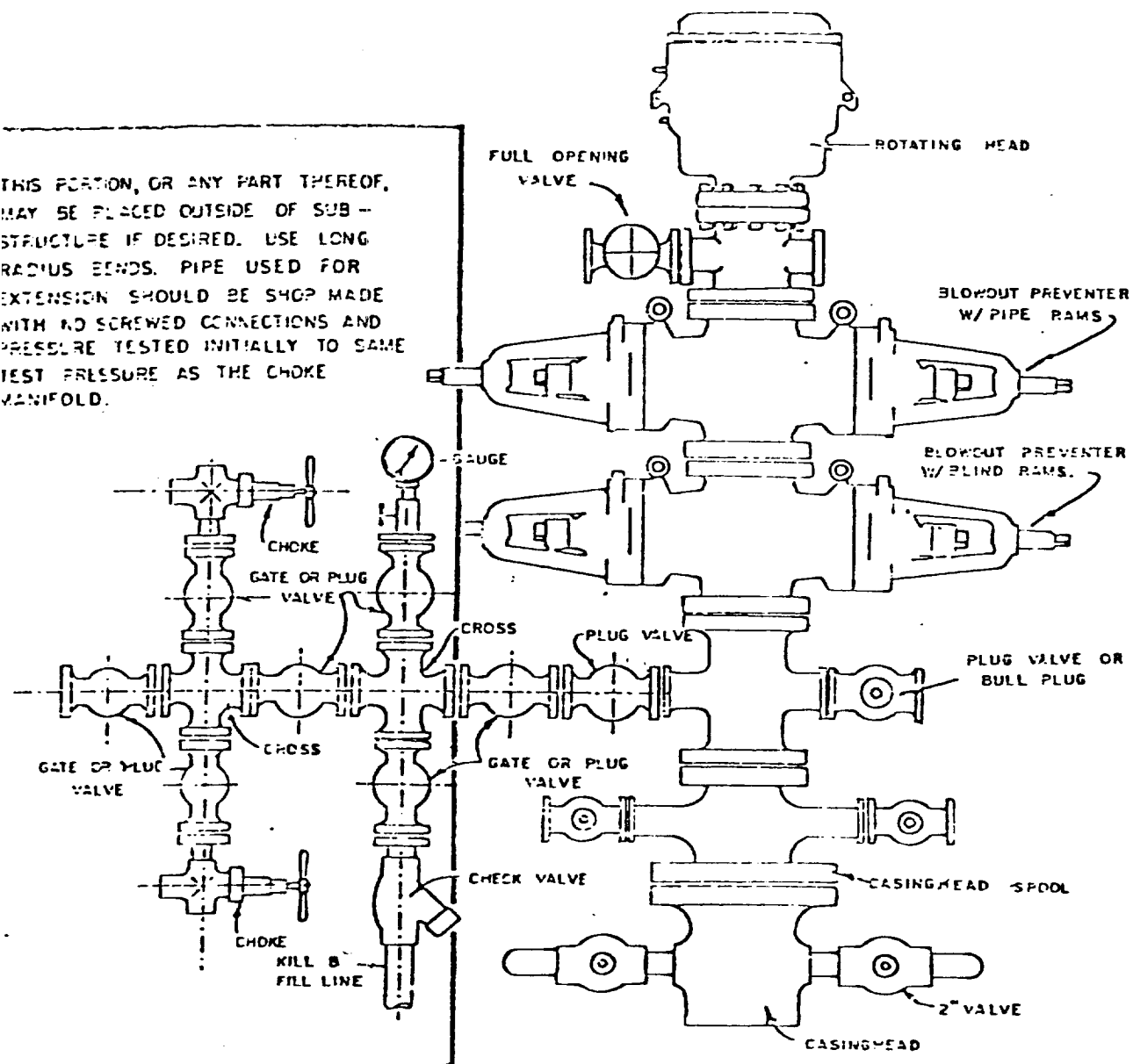
SUPRON ENERGY CORPORATION  
LOCATION AND EQUIPMENT LAYOUT

840 feet from the North line and 1110 feet from the West line of Section 29, Township 26 North, Range 3 West, Rio Arriba County, New Mexico





THIS PORTION, OR ANY PART THEREOF, MAY BE PLACED OUTSIDE OF SUB-STRUCTURE IF DESIRED. USE LONG RADIUS BENDS. PIPE USED FOR EXTENSION SHOULD BE SHOP MADE WITH NO SCREWED CONNECTIONS AND PRESSURE TESTED INITIALLY TO SAME TEST PRESSURE AS THE CHOKE MANIFOLD.



BLOWOUT PREVENTER HOOKUP

SUPRON ENERGY CORPORATION  
POST OFFICE BOX 808  
FARMINGTON, NEW MEXICO 87401

I hereby certify that I, or persons under my direct supervision, have inspected the proposed drillsite and access route; that I am familiar with the conditions which presently exist; that the statements made in this plan are, to the best of my knowledge, true and correct; and, that the work associated with the operations proposed herein will be performed by SUPRON ENERGY CORPORATION and its contractors subcontractors in conformity with this plan and the terms and conditions under which it is approved.

SUPRON ENERGY CORPORATION

A handwritten signature in cursive script, reading "Rudy D. Motto".

Rudy D. Motto  
Area Superintendent  
Phone: 325-3587