

UNITED STATES
DEPARTMENT OF THE INTERIOR
GEOLOGICAL SURVEY

APPLICATION FOR PERMIT TO DRILL, DEEPEN, OR PLUG BACK

1a. TYPE OF WORK

DRILL ☒DEEPEN ☐PLUG BACK ☐

b. TYPE OF WELL

OIL
WELL ☐GAS
WELL ☒

OTHER

SINGLE
ZONE ☒MULTIPLE
ZONE ☐

2. NAME OF OPERATOR

SUPRON ENERGY CORPORATION

3. ADDRESS OF OPERATOR

P.O. Box 808, Farmington, New Mexico 87401

4. LOCATION OF WELL (Report location clearly and in accordance with any State requirements.)*

At surface

850 feet from the South line and 870 feet from the West line
At proposed prod. zone

Same as above

14. DISTANCE IN MILES AND DIRECTION FROM NEAREST TOWN OR POST OFFICE*

One mile west of Ojito, New Mexico

15. DISTANCE FROM PROPOSED*

LOCATION TO NEAREST
PROPERTY OR LEASE LINE, FT.
(Also to nearest drlg. unit line, if any)

850

18. DISTANCE FROM PROPOSED LOCATION*

TO NEAREST WELL, DRILLING, COMPLETED,
OR APPLIED FOR, ON THIS LEASE, FT.

1954

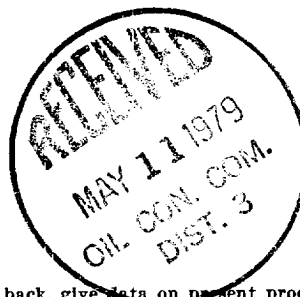
21. ELEVATIONS (Show whether DF, RT, GR, etc.)

7123 Gr.

23. PROPOSED CASING AND CEMENTING PROGRAM

SIZE OF HOLE	SIZE OF CASING	WEIGHT PER FOOT	SETTING DEPTH	QUANTITY OF CEMENT
12-1/4"	9-5/8"	32.30	250	150 SX
8-3/4"	5-1/2"	15.50	6200	500 SX

We plan to drill this well through the Mesaverde with mud and run 5 1/2" casing to T.D. It will then be perforated and sand - water fractured. 2-1/16" tubing will be run to approximately 5880 feet.



IN ABOVE SPACE DESCRIBE PROPOSED PROGRAM: If proposal is to deepen or plug back, give data on present productive zone and proposed new productive zone. If proposal is to drill or deepen directionally, give pertinent data on subsurface locations and measured and true vertical depths. Give blowout preventer program, if any.

24.

SIGNED

Kenneth E. Roddy

TITLE

Production Superintendent

DATE

May 9, 1979

(This space for Federal or State office use)

PERMIT NO.

APPROVAL DATE

APPROVED BY

TITLE

DATE

CONDITIONS OF APPROVAL, IF ANY:

*OK**State*

NEW MEXICO OIL CONSERVATION COMMISSION
WELL LOCATION AND ACREAGE DEDICATION PLAT

Supersedees C-128
Effective 1-1-65

All distances must be from the outer boundaries of the Section.

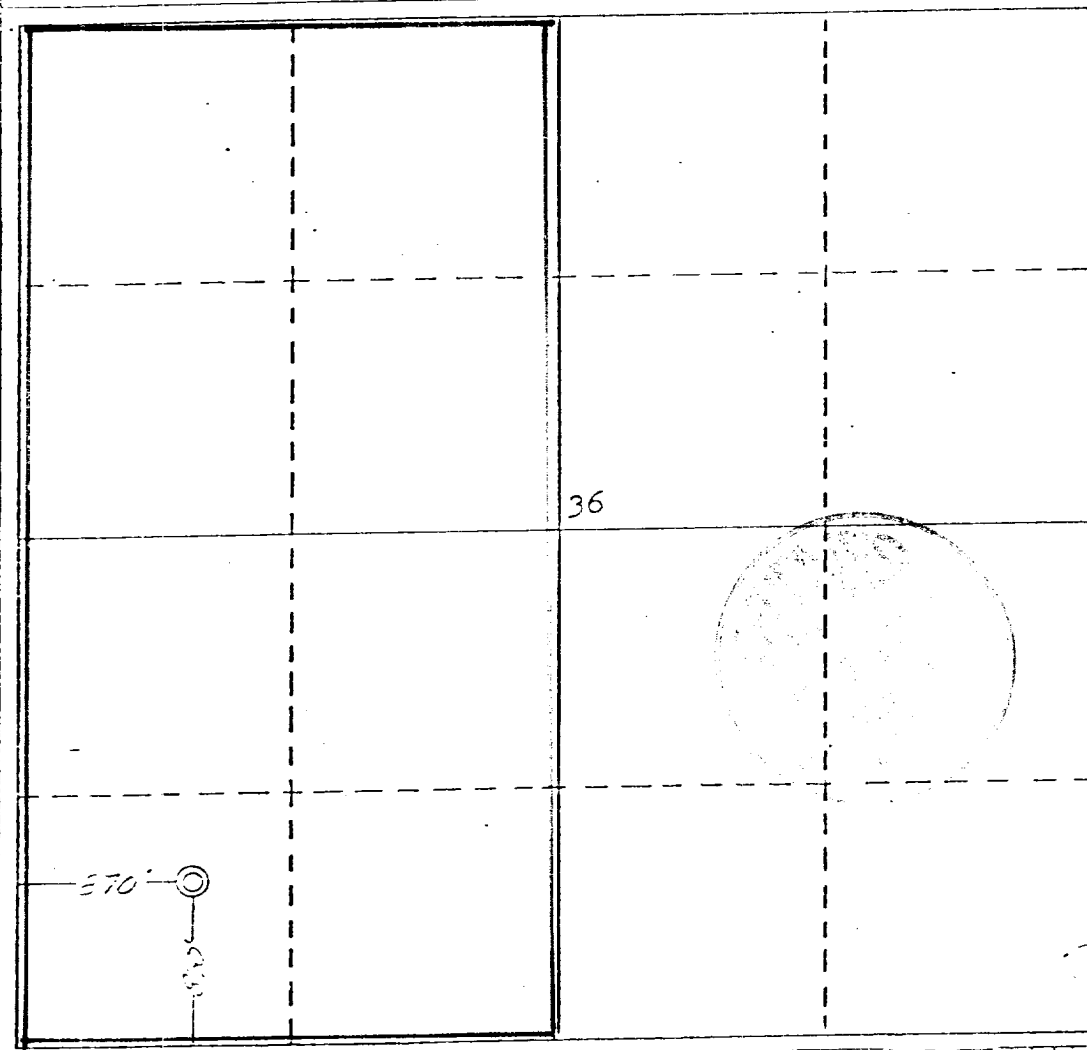
Operator SUPRON ENERGY CORPORATION			Lease JICARILLA "B"		Well No. 13
Unit Letter M	Section 36	Township 26 NORTH	Range 4 WEST	County RIO ARriba	
Actual Footage Location of Well: 850 feet from the SOUTH line and 870 feet from the WEST line					
Ground Level Elev. 7123	Producing Formation MESAVERDE		Pool BLANCO		Dedicated Acreage: W1/2 320 Acres

1. Outline the acreage dedicated to the subject well by colored pencil or hatchure marks on the plat below.
2. If more than one lease is dedicated to the well, outline each and identify the ownership thereof (both as to working interest and royalty).
3. If more than one lease of different ownership is dedicated to the well, have the interests of all owners been consolidated by communitization, unitization, force-pooling, etc?

☐ Yes ☐ No If answer is "yes," type of consolidation _____

If answer is "no," list the owners and tract descriptions which have actually been consolidated. (Use reverse side of this form if necessary.) _____

No allowable will be assigned to the well until all interests have been consolidated (by communitization, unitization, forced-pooling, or otherwise) or until a non-standard unit, eliminating such interests, has been approved by the Commission.



CERTIFICATION

I hereby certify that the information contained herein is true and complete to the best of my knowledge and belief.

Rudy D. Motto
Name

Rudy D. Motto
Position

Area Superintendent

Company
SUPRON ENERGY CORPORATION

Date
April 10, 1979

I hereby certify that the well location shown on this plat is plotted in the field notes, actual 1463 made by me or under my supervision, and that the same is true and correct to the best of my knowledge and belief.

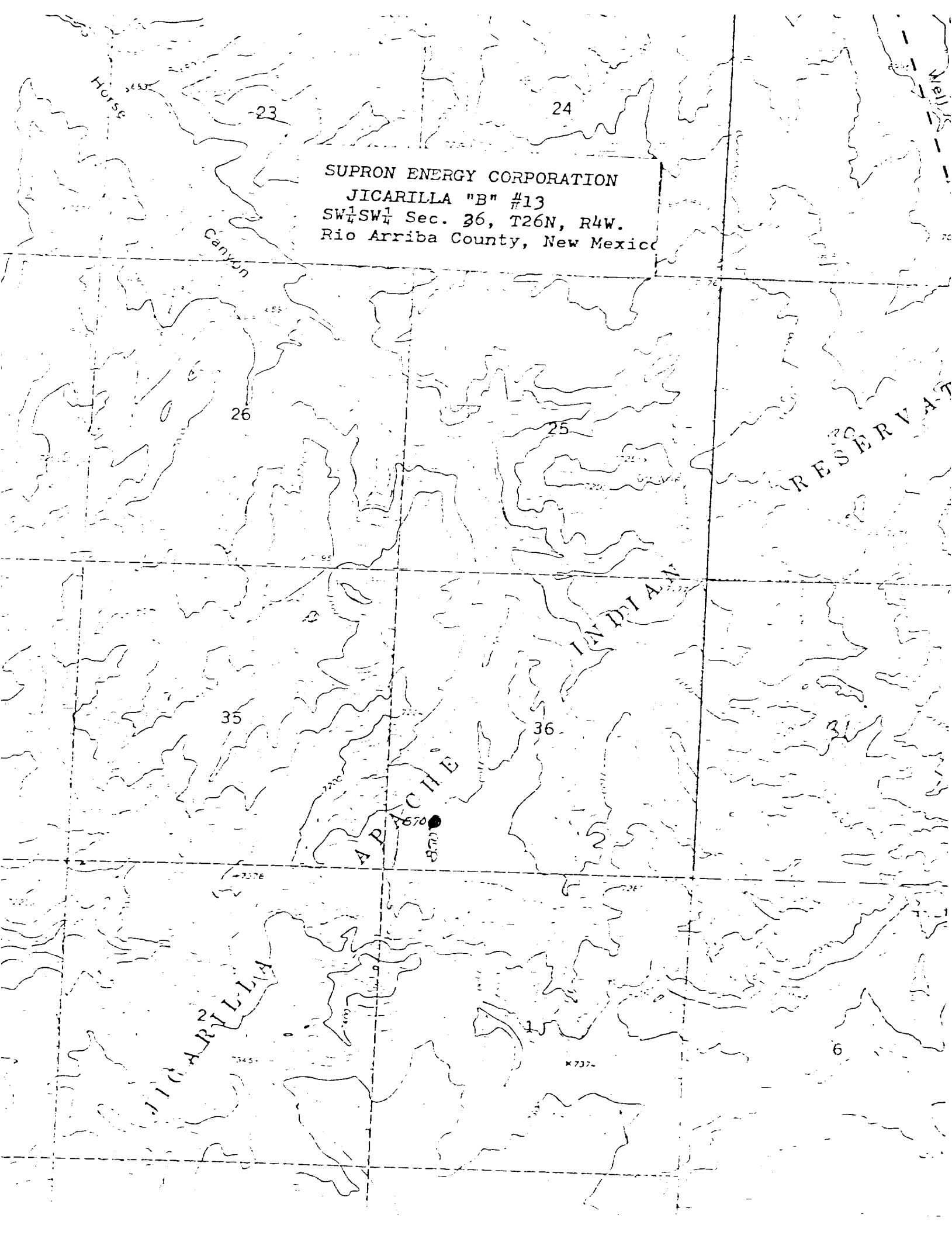
Date Surveyed
4 April 1979

Registered Professional Engineer and/or Land Surveyor

James P. Leese
James P. Leese

Certificate No.
1463

SUPRON ENERGY CORPORATION
JICARILLA "B" #13
SW $\frac{1}{4}$ SW $\frac{1}{4}$ Sec. 36, T26N, R4W.
Rio Arriba County, New Mexico



Jicarilla "B" No. 13
Unit M, Sec. 36, T-26N, R-4W
Rio Arriba County, New Mexico

SUPPLEMENT TO FORM 9-331C

1. The Geologic name of the surface formation is "Wasatch".

2. The estimated tops of important Geologic markers are:

A. Base of Ojo Alamo	3410
B. Top of Pictured Cliffs	3700
C. Top of Cliff House	5350
D. Top of Point Lookout	5885

3. The estimated depth at which anticipated water, oil, or other mineral - bearing formations are expected to be encountered are:

A. Base of Ojo Alamo	3410 - water
B. Top of Pictured Cliffs	3700 - gas
C. Top of Cliff House	5350 - gas
D. Top of Point Lookout	5885 - gas

4. The casing program is shown on form 9-331C and all casing is new.

5. The lessee's pressure - control equipment schematics are attached, along with minimum specifications, testing procedures, and frequencies.

6. The type, estimated volumes, and characteristics of the circulating media are as follows:

- A. 0-250 ft. natural mud
- B. 250 - 6200 ft. Permaloid non-dispersed mud with 167 sx gel, 67 sx permaloid and 10 sx C.M.C.

7. The auxiliary equipment to be used will be floats at the bit and a sub on the floor with a full-opening valve to be stabbed into the drill pipe when the kelly is not in the string.

8. This well is in an area which is partially developed; therefore we will not have a testing and coring program. The logging program will be as follows:

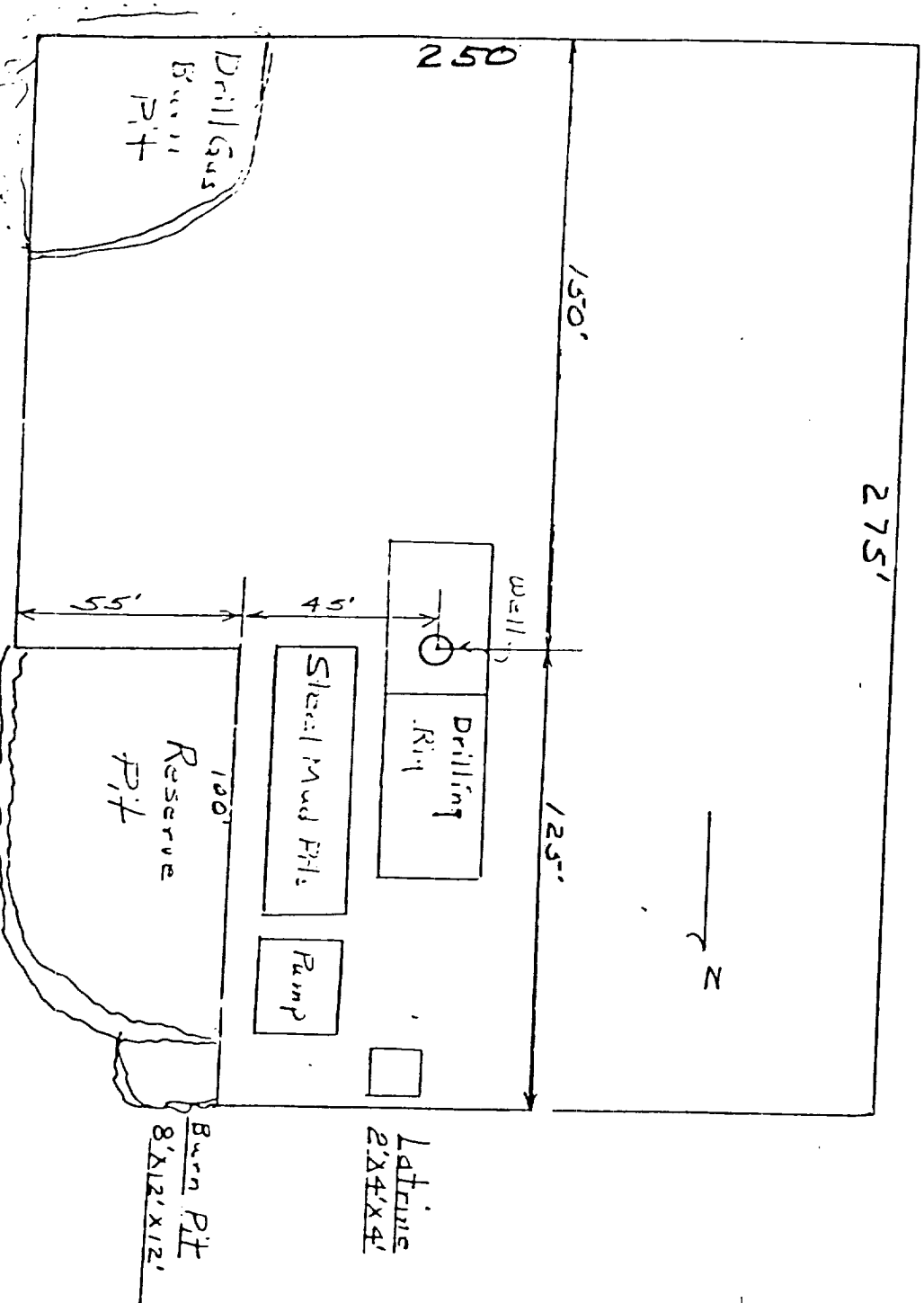
- A. E.S. Induction.
- B. Gamma Ray Density.
- C. Gamma Ray Correlation.
- D. Cement Bond Log.

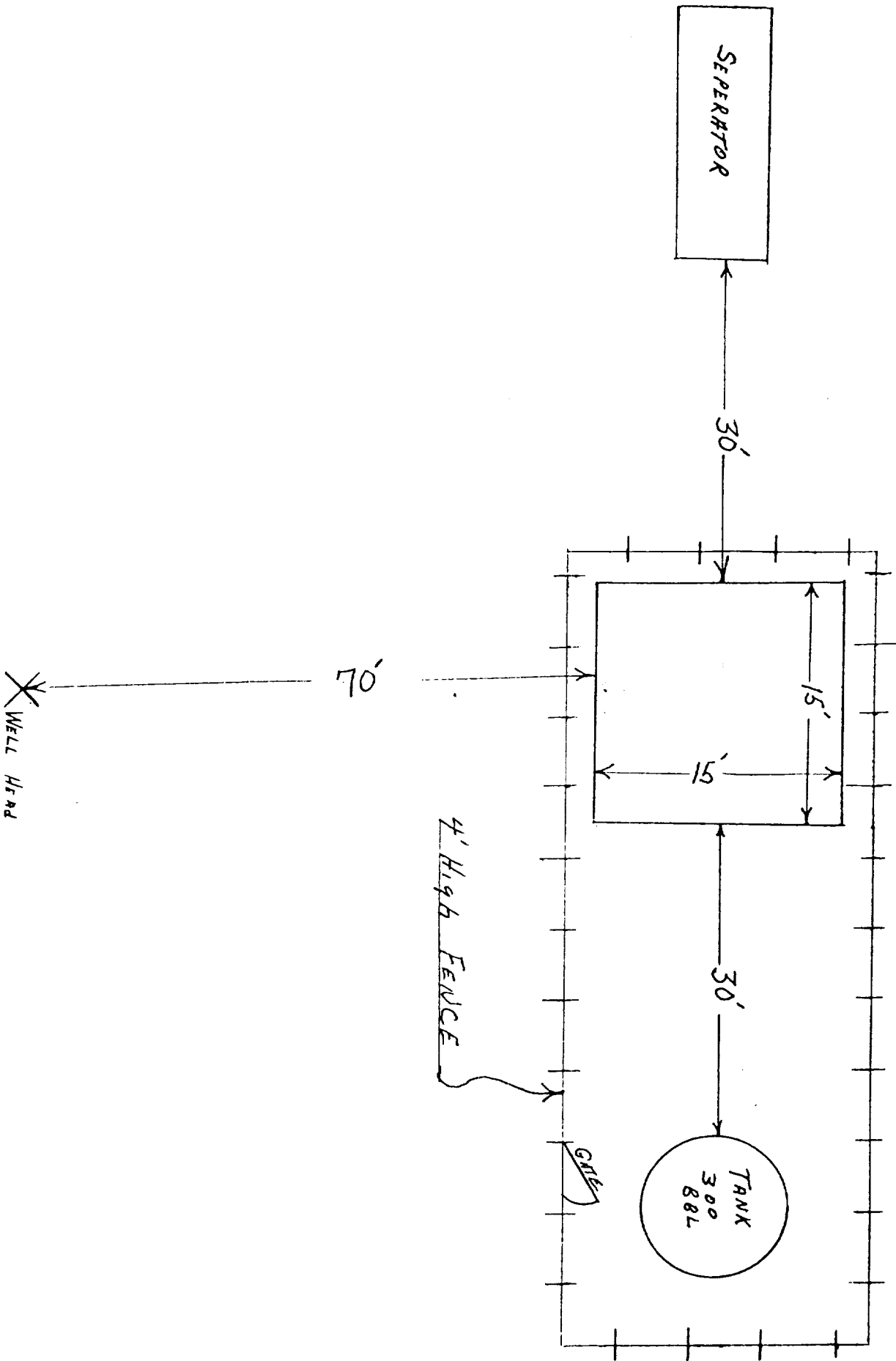
9. We do not expect to find any abnormal pressures, temperatures or hydrogen sulphide problems in this partially - developed area.

10. The anticipated starting date for this well is 8-1-79

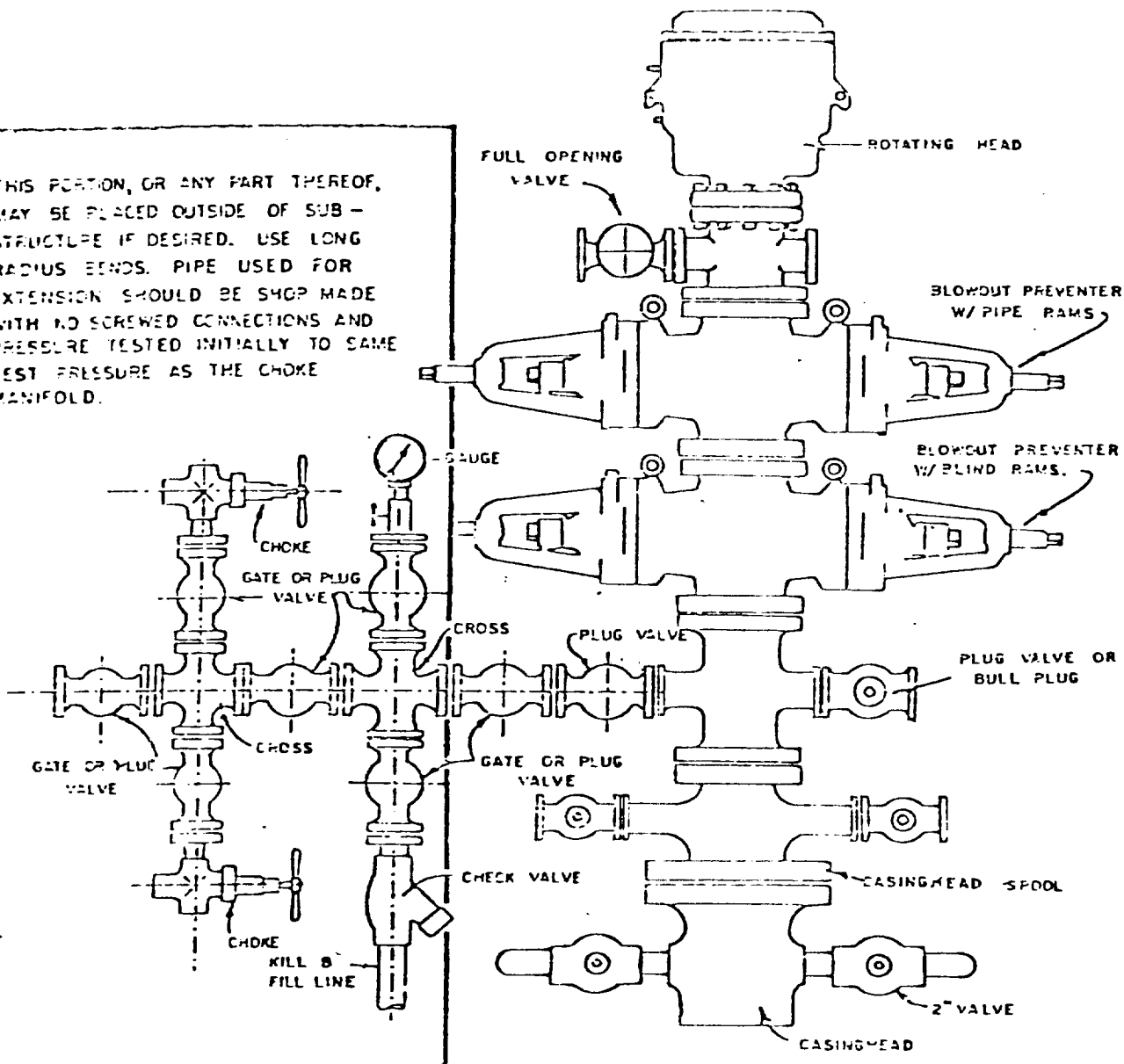
SUPRON ENERGY CORPORATION
LOCATION AND EQUIPMENT LAYOUT
JICARILLA "B" NO. 13

850 Feet from the South line and 870 feet from the West line of Section 36, Township 26 North, Range 4 West, N.M.P.M., Rio Arriba County, New Mexico.





THIS PORTION, OR ANY PART THEREOF, MAY BE PLACED OUTSIDE OF SUB-STRUCTURE IF DESIRED. USE LONG RADIUS BENDS. PIPE USED FOR EXTENSION SHOULD BE SHOP MADE WITH NO SCREWED CONNECTIONS AND PRESSURE TESTED INITIALLY TO SAME TEST PRESSURE AS THE CHOKE MANIFOLD.

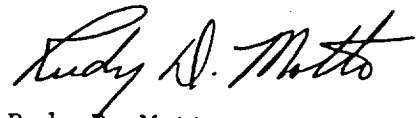


BLOWOUT PREVENTER HOOKUP

SUPRON ENERGY CORPORATION
POST OFFICE BOX 808
FARMINGTON, NEW MEXICO 87401

I hereby certify that I, or persons under my direct supervision, have inspected the proposed drillsite and access route; that I am familiar with the conditions which presently exist; that the statements made in this plan are, to the best of my knowledge, true and correct; and, that the work associated with the operations proposed herein will be performed by SUPRON ENERGY CORPORATION and its contractors subcontractors in conformity with this plan and the terms and conditions under which it is approved.

SUPRON ENERGY CORPORATION

A handwritten signature in cursive script, reading "Rudy D. Motto".

Rudy D. Motto
Area Superintendent
Phone: 325-3587

UNITED STATES
DEPARTMENT OF THE INTERIOR
GEOLOGICAL SURVEY

SUNDRY NOTICES AND REPORTS ON WELLS

(Do not use this form for proposals to drill or to deepen or plug back to a different reservoir. Use Form 9-331-C for such proposals.)

1. oil ☐ gas ☒ other ☐
well well

2. NAME OF OPERATOR

Supron Energy Corporation

3. ADDRESS OF OPERATOR

P. O. Box 808, Farmington, New Mexico 87401

4. LOCATION OF WELL (REPORT LOCATION CLEARLY. See space 17 below.)

AT SURFACE: **850 ft./3; 870 ft./N line**

AT TOP PROD. INTERVAL: **Same as above.**

AT TOTAL DEPTH: **Same as above.**

16. CHECK APPROPRIATE BOX TO INDICATE NATURE OF NOTICE, REPORT, OR OTHER DATA

REQUEST FOR APPROVAL TO:

TEST WATER SHUT-OFF ☐
FRACTURE TREAT ☐
SHOOT OR ACIDIZE ☐
REPAIR WELL ☐
PULL OR ALTER CASING ☐
MULTIPLE COMPLETE ☐
CHANGE ZONES ☐
ABANDON* ☐
(other) ☐

SUBSEQUENT REPORT OF:

☒
☐
☐
☐
☐
☐
☐
☐
☐

(NOTE: Report results of multiple completion or zone change on Form 9-330.)

17. DESCRIBE PROPOSED OR COMPLETED OPERATIONS (Clearly state all pertinent details, and give pertinent dates, including estimated date of starting any proposed work. If well is directionally drilled, give subsurface locations and measured and true vertical depths for all markers and zones pertinent to this work.)*

1. Spudded 13-3/4" surface hole at 7:30 P.M. 10/4/79.
2. Drilled 13-3/4" hole to total depth of 262 ft. R.K.B.
3. Ran 6 joints (250 ft.) of 9-5/8", 32.30#, H-40 casing. Landed at 262 ft. R.K.B.
4. Cemented with 225 sacks of class "B" with 3% Calcium Chloride. Cement circulated to surface. Plug down at 2:00 P.M. 10/5/79..
5. Waited on cement 12 hours.
6. Pressure - tested casing to 1000 lb. for 20 minutes. Held O.K.

Subsurface Safety Valve: Manu. and Type _____

Set @ _____

18. I hereby certify that the foregoing is true and correct
Original signed by _____

SIGNED **Kenneth E. Roddy**

TITLE **Production Supt.**

DATE **October 12, 1979**

(This space for Federal or State office use)

APPROVED BY _____
CONDITIONS OF APPROVAL, IF ANY:

TITLE _____ DATE _____

OCT 17 1979

5. LEASE

Contract No. 106

6. IF INDIAN, ALLOTTEE OR TRIBE NAME

Jicarilla Apache

7. UNIT AGREEMENT NAME

8. FARM OR LEASE NAME

Jicarilla "B"

9. WELL NO.

13

10. FIELD OR WILDCAT NAME

Blanco Mesaverte

11. SEC., T., R., M., OR BLK. AND SURVEY OR AREA

Sec. 36, T-26N, R-4W, N.M.P.M.

12. COUNTY OR PARISH

Rio Arriba

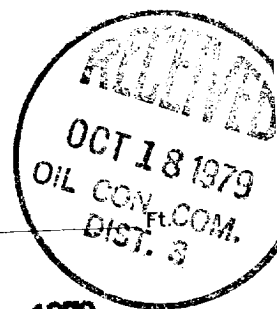
13. STATE

New Mexico

14. API NO.

15. ELEVATIONS (SHOW DF, KDB, AND WD)

7135 ft. R.K.B.



Instructions

General: This form is designed for submitting proposals to perform certain well operations, and reports of such operations when completed, as indicated, on Federal and Indian lands pursuant to applicable Federal law and regulations, and, if approved or accepted by any State, on all lands in such State, pursuant to applicable State law and regulations. Any necessary special instructions concerning the use of this form and the number of copies to be submitted, particularly with regard to local, area, or regional procedures and practices, either are shown below or will be issued by, or may be obtained from, the local Federal and/or State office.

Item 4: If there are no applicable State requirements, locations on Federal or Indian land should be described in accordance with Federal requirements. Consult local State or Federal office for specific instructions.

Item 17: Proposals to abandon a well and subsequent reports of abandonment should include such special information as is required by local Federal and/or State offices. In addition, such proposals and reports should include reasons for the abandonment; data on any former or present productive zones, or other zones with present significant fluid contents not sealed off by cement or otherwise; depths (top and bottom) and method of placement of cement plugs; mud or other material placed below, between and above plugs; amount, size, method of parting of any casing, liner or tubing pulled and the depth to top of any left in the hole; method of closing top of well; and date well site conditioned for final inspection looking to approval of the abandonment.