

UNITED STATES
DEPARTMENT OF THE INTERIOR
GEOLOGICAL SURVEY

APPLICATION FOR PERMIT TO DRILL, DEEPEN, OR PLUG BACK

1a. TYPE OF WORK

DRILL ☒DEEPEN ☐PLUG BACK ☐

b. TYPE OF WELL

OIL
WELL ☐GAS
WELL ☒

OTHER

SINGLE
ZONE ☐MULTIPLE
ZONE ☒

2. NAME OF OPERATOR

Supram Energy Corporation

3. ADDRESS OF OPERATOR

P. O. Box 303, Farmington, New Mexico 87401

4. LOCATION OF WELL (Report location clearly and in accordance with any State requirements.)*

At surface

O 1160 feet from the South line and 1810 feet from the East line.
At proposed prod. zone Same as above.

14. DISTANCE IN MILES AND DIRECTION FROM NEAREST TOWN OR POST OFFICE*

15. DISTANCE FROM PROPOSED* 1810' / Lease Line
LOCATION TO NEAREST
PROPERTY OR LEASE LINE, FT.
(Also to nearest drlg. unit line, if any) 1160' / Drlg. Unit16. NO. OF ACRES IN LEASE
256017. NO. OF ACRES ASSIGNED
TO THIS WELL
E 319.9618. DISTANCE FROM PROPOSED LOCATION*
TO NEAREST WELL, DRILLING, COMPLETED,
OR APPLIED FOR, ON THIS LEASE, FT. Approx. 2600 ft.19. PROPOSED DEPTH
850020. ROTARY OR CABLE TOOLS
Rotary

21. ELEVATIONS (Show whether DF, RT, GR, etc.)

7309 Gr.

22. APPROX. DATE WORK WILL START*
July 5, 1979

23.

PROPOSED CASING AND CEMENTING PROGRAM

SIZE OF HOLE	SIZE OF CASING	WEIGHT PER FOOT	SETTING DEPTH	QUANTITY OF CEMENT
12-3/4"	10-3/4"	32.75	250 feet	180 sz.
9-5/8"	7-5/8"	26.40	4300 feet	250 sz.
6-3/4"	5-1/2"	15.50	8500 feet	550 sz.

This well will be drilled to intermediate casing point using mud as a circulating medium. After intermediate casing is set and cemented, the well will be drilled to total depth using gas or air as a circulating medium. The well will have liner run, hung off and cemented. The well will be perforated in the Dakota formation and sand water fraced to stimulate production. A bridge plug will be set above the Dakota formation. The Mesaverde zone will be perforated then sand water fraced to stimulate production. The well will be cleaned up, the Bridge plug drilled out and a Baker production packer will be set at approximately 7600 feet. Tubing will be run and landed in the production packer and a second string of tubing will be run and set at approximately 5,100 feet. The well will then be nipples down and a packer test will be run to assure zone separation.

IN ABOVE SPACE DESCRIBE PROPOSED PROGRAM: If proposal is to deepen or plug back, give data on present productive zone and proposed new productive zone. If proposal is to drill or deepen directionally, give pertinent data on subsurface location and measured and true vertical depths. Give blowout preventer program, if any.

24.

SIGNED

Ludy D. Netto
Ludy D. Netto

TITLE

Area Superintendent

(This space for Federal or State office use)

PERMIT NO.

APPROVAL DATE

APPROVED BY

TITLE

DATE

CONDITIONS OF APPROVAL, IF ANY:

OK

State

30-039-22056

5. LEASE DESIGNATION AND SERIAL NO.

Contract No. 150

6. IF INDIAN, ALLOTTEE OR TRIBE NAME

Hicarilla Apache

7. UNIT AGREEMENT NAME

8. FARM OR LEASE NAME

Hicarilla "C"

9. WELL NO.

9-1

10. FIELD AND POOL OR WILDCAT

Blanco Mesaverde

Basin Dakota

11. SEC., T., E., M., OR BLK.

AND SURVEY OR AREA

Sec. 1, T-26N, R-5W

N.M.P.M.

12. COUNTY OR PARISH

Rio Arriba

13. STATE

New Mexico

Instructions

General: This form is designed for submitting proposals to perform certain well operations, as indicated, on all types of lands and leases for appropriate action by either a Federal or a State agency, or both, pursuant to applicable Federal and/or State laws and regulations. Any necessary special instructions concerning the use of this form and the number of copies to be submitted, particularly with regard to local, area, or regional procedures and practices, either are shown below or will be issued by, or may be obtained from, the local Federal and/or State office.

Item 1: If the proposal is to redrill to the same reservoir at a different subsurface location or to a new reservoir, use this form with appropriate notations. Consult applicable State or Federal regulations concerning subsequent work proposals or reports on the well.

Item 4: If there are no applicable State requirements, locations on Federal or Indian land should be described in accordance with Federal requirements. Consult local State or Federal office for specific instructions.

Item 14: Needed only when location of well cannot readily be found by road from the land or lease description. A plat, or plats, separate or on this reverse side, showing the roads to, and the surveyed location of, the well, and any other required information, should be furnished when required by Federal or State agency offices.

Items 15 and 18: If well is to be, or has been directionally drilled, give distances for subsurface location of hole in any present or objective production zone.

Item 22: Consult applicable Federal or State regulations, or appropriate officials, concerning approval of the proposal before operations are started.

**NEW MEXICO OIL CONSERVATION COMMISSION
WELL LOCATION AND ACREAGE DEDICATION PLAT**

Form C-102
Supersedes C-728
Effective 1-1-65

All distances must be from the outer boundaries of the Section.

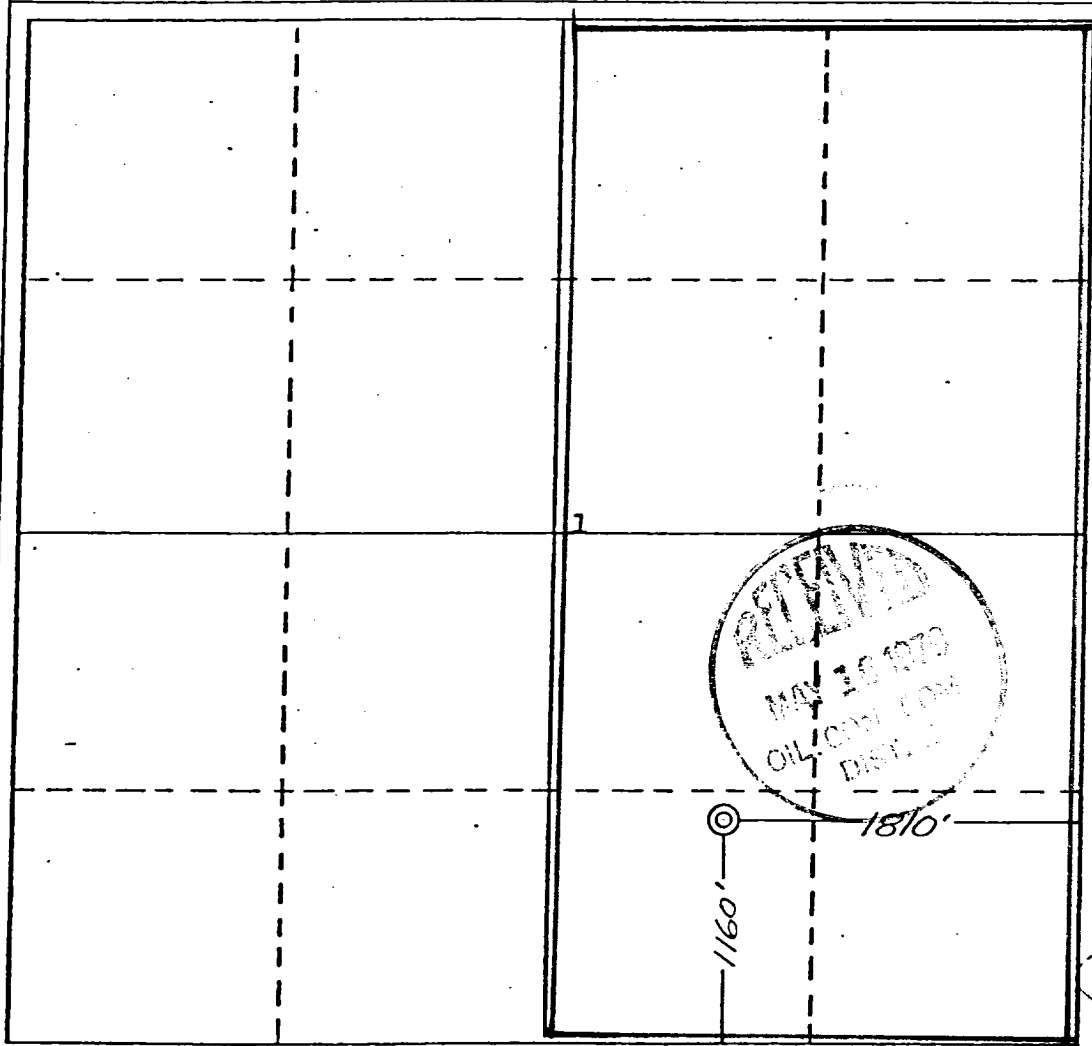
Operator SUPRON ENERGY CORPORATION			Lease JICARILLA "G"		Well No. 9-A
Unit Letter 6	Section 1	Township 26 NORTH	Range 5 WEST	County RIO ARriba	
Actual Footage Location of Well: <div style="display: flex; justify-content: space-between;"> 1160 feet from the SOUTH line and 1810 feet from the EAST line </div>					
Ground Level Elev. 7309	Producing Formation DAKOTA		Pool BASIN	Dedicated Acreage: E1/2 319.96 Acres	

1. Outline the acreage dedicated to the subject well by colored pencil or hatchure marks on the plat below.
2. If more than one lease is dedicated to the well, outline each and identify the ownership thereof (both as to working interest and royalty).
3. If more than one lease of different ownership is dedicated to the well, have the interests of all owners been consolidated by communitization, unitization, force-pooling, etc?

☐ Yes ☐ No If answer is "yes," type of consolidation _____

If answer is "no," list the owners and tract descriptions which have actually been consolidated. (Use reverse side of this form if necessary.) _____

No allowable will be assigned to the well until all interests have been consolidated (by communitization, unitization, forced-pooling, or otherwise) or until a non-standard unit, eliminating such interests, has been approved by the Commission.



CERTIFICATION

I hereby certify that the information contained herein is true and complete to the best of my knowledge and belief.

Rudy D. Motto
Name

Rudy D. Motto
Position

Area Superintendent

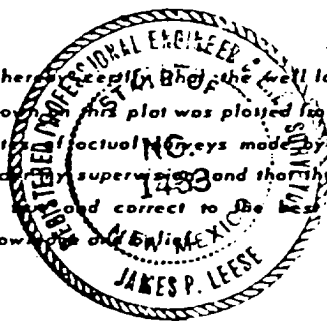
Company

SUPRON ENERGY CORPORATION

Date

April 11, 1979

I hereby certify that the well location shown on this plat was plotted from field notes and actual surveys made by me or under my supervision and that the same is correct to the best of my knowledge.



Date Surveyed

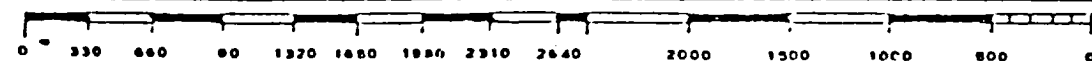
6 April 1979

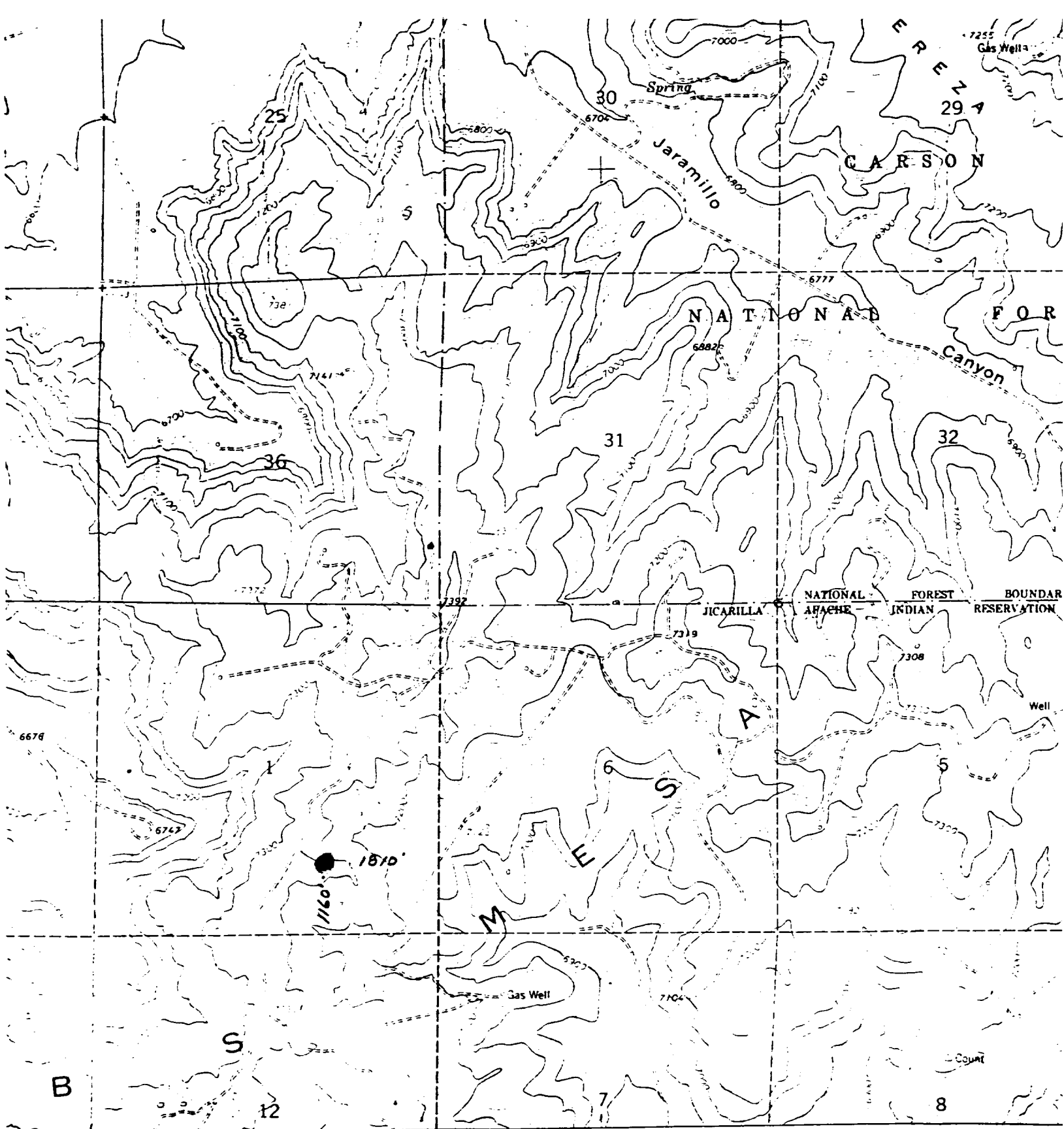
Registered Professional Engineer and/or Land Surveyor

James P. Leese
James P. Leese

Certificate No.

1463





SUPRON ENERGY CORPORATION
 JICARILLA "G" #9-A
 SW $\frac{1}{4}$ SE $\frac{1}{4}$ Sec. 1, T26N, R5W
 Rio Arriba County, New Mexico

CONTOUR INTERVAL 20 FEET
 NATIONAL GEODETIC VERTICAL DATUM OF 1929



QUADRANGLE LOCATION

Light-duty

Jicarilla "G" No. 9-A
Unit 0, Sec. 1, Twp. 26N, Rge. 5W
Rio Arriba County, New Mexico

SUPPLEMENT TO FORM 9-331C

1. The Geologic name of the surface formation is "Wasatch".
2. The estimated tops of important Geologic markers are:

A. Base of Ojo Alamo	3680
B. Top of Pictured Cliffs	4045
C. Top of Cliff House	5710
D. Top of Point Lookout	6195
E. Top of Dakota	8245
3. The estimated depth at which anticipated water, oil, or other mineral - bearing formations are expected to be encountered are:

A. Base of Ojo Alamo	3680 - water
B. Top of Pictured Cliffs	4045 - gas
C. Top of Cliff House	5710 - gas
D. Top of Point Lookout	6195 - gas
E. Top of Dakota	8245 - gas
4. The casing program is shown on form 9-331C and all casing is new.
5. The lessee's pressure - control equipment schematics are attached, along with minimum specifications, testing procedures, and frequencies.
6. The type, estimated volumes, and characteristics of the circulating media are as follows:

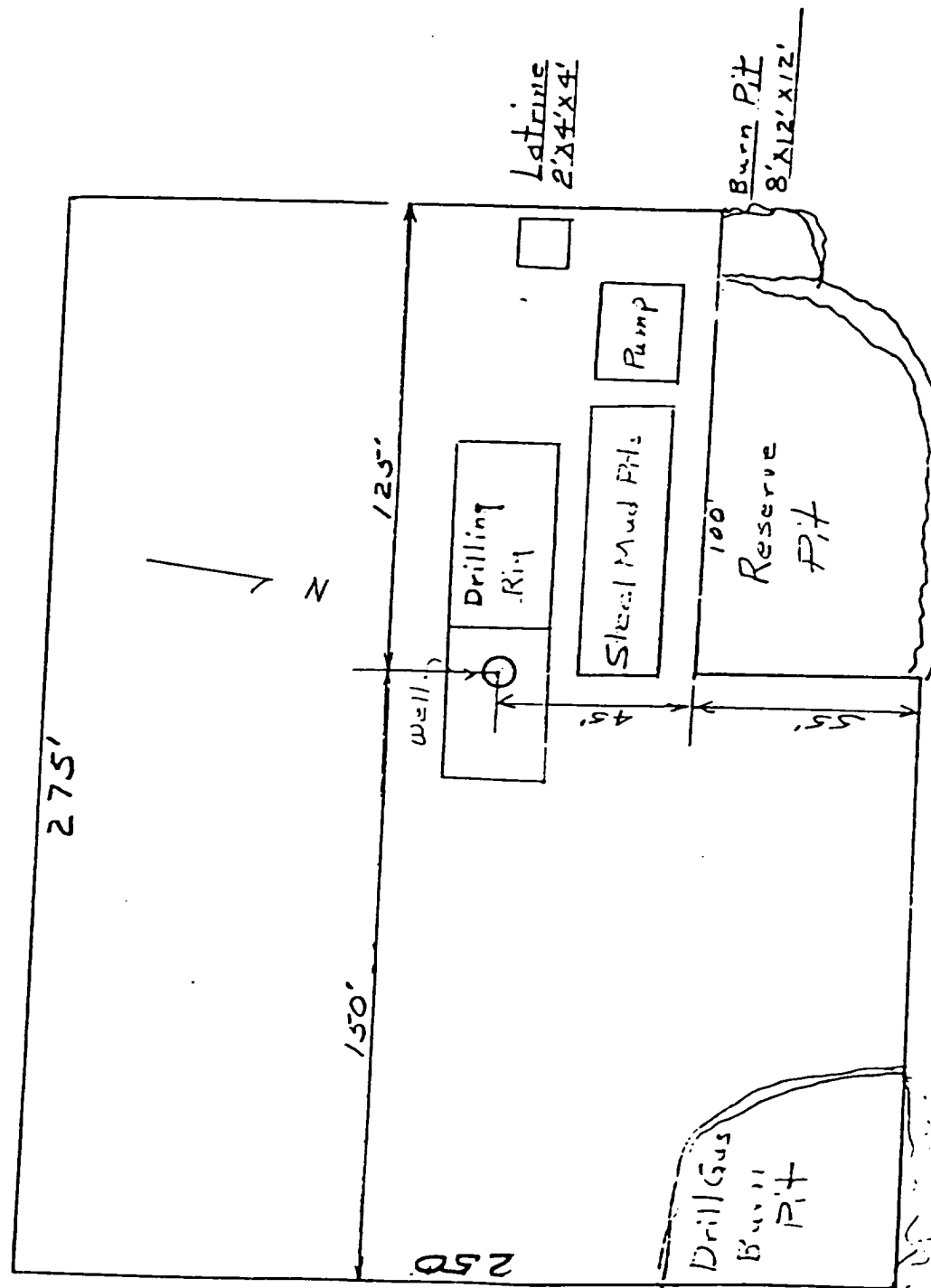
A. 0 - 250 ft.	Natural mud.
B. 250 - 4300 ft.	Permaloid non-dispersed mud containing 167 sx gel, 67 sx permaloid, and 10 sx C.M.C.
C. 4300 - 8500 ft.	Natural gas or air.
7. The auxiliary equipment to be used will be floats at the bit and a sub on the floor with a full-opening valve to be stabbed into the drill pipe when the kelly is not in the string.
8. This well is in an area which is partially developed; therefore we will not have a testing and coring program. The logging program will be as follows:

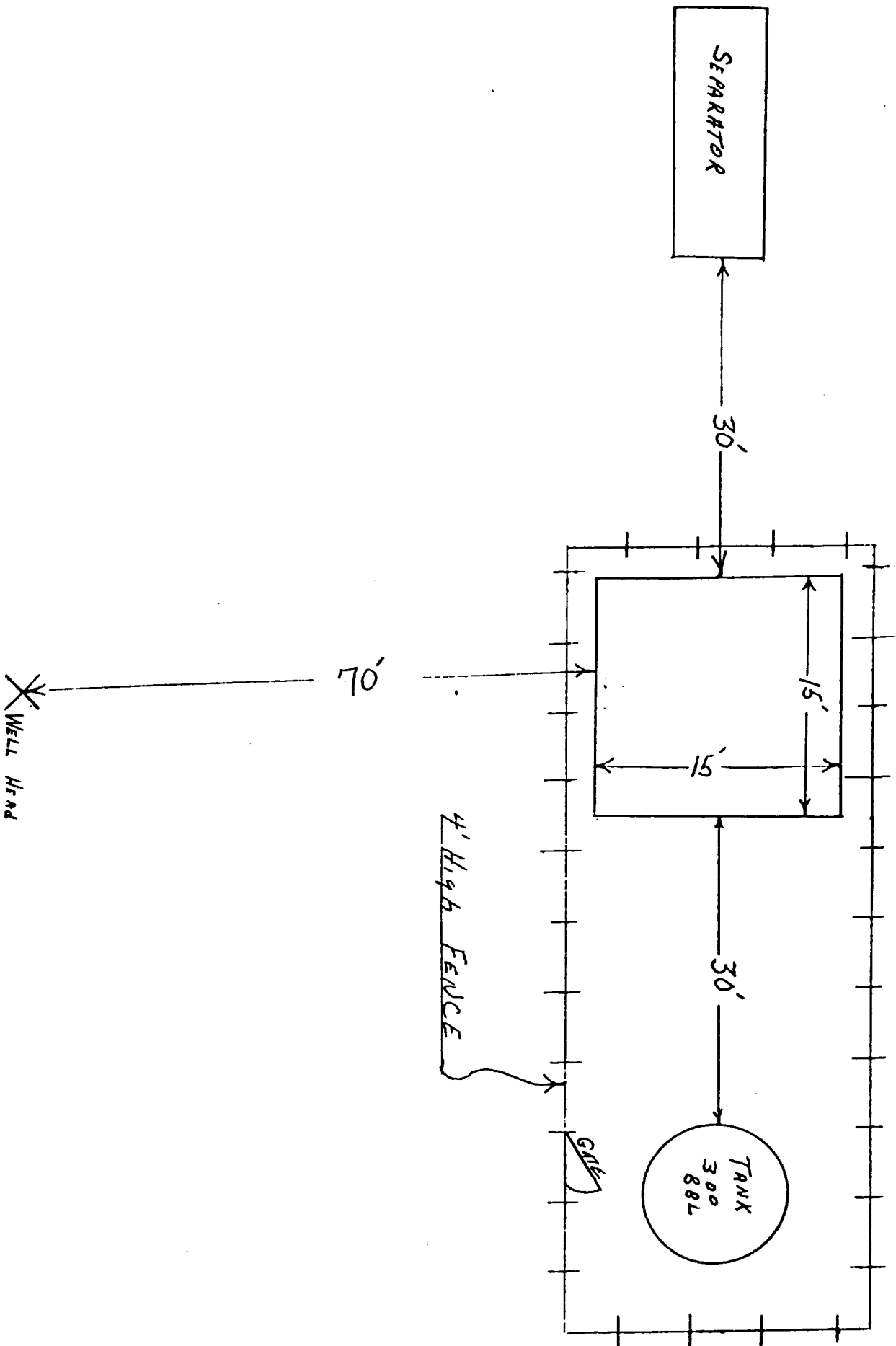
A. E.S. Induction.
B. Gamma Ray Density.
C. Gamma Ray Correlation.
D. Cement Bond Log.
9. We do not expect to find any abnormal pressures, temperatures or hydrogen sulphide problems in this partially - developed area.
10. The anticipated starting date for this well is 7-5-79.

SUPRON ENERGY CORPORATION
LOCATION AND EQUIPMENT LAYOUT

JICARILLA "G" NO. 9-A

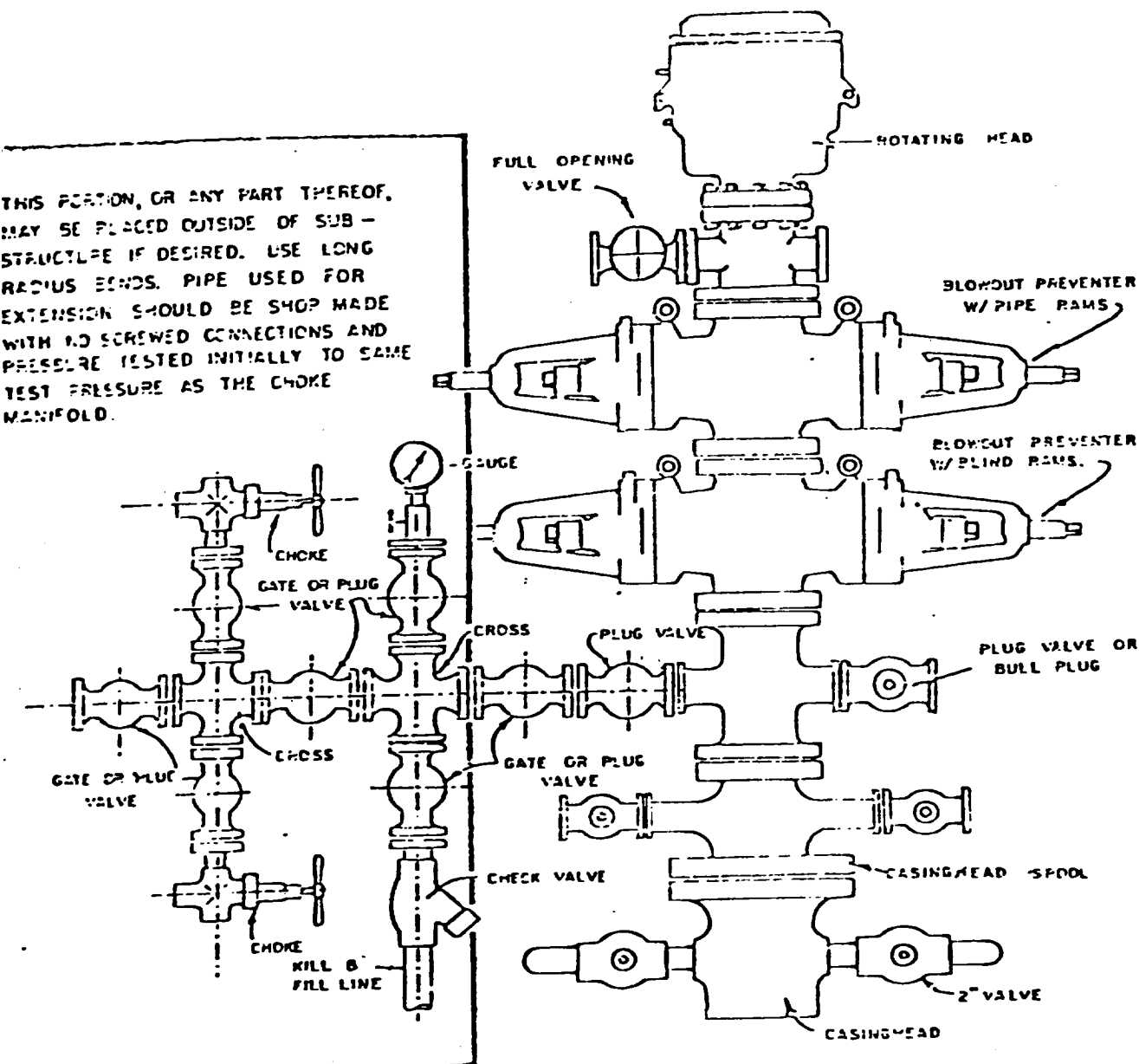
1160 Feet from the South line and 1810 feet from the East line of Section 1, Township 26 North, Range 5 West, N.M.P.M., Rio Arriba County, New Mexico.





Blowout Preventer will be tested daily and prior to drilling out with the results to be logged on the drillers report.

The B.O.P. and all valve and fittings are rated at 3000 psi working pressure, and hydraulically operated

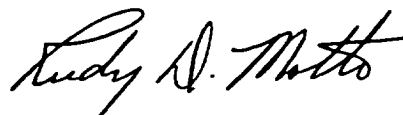


BLOWOUT PREVENTER HOOKUP

SUPRON ENERGY CORPORATION
POST OFFICE BOX 808
FARMINGTON, NEW MEXICO 87401

I hereby certify that I, or persons under my direct supervision, have inspected the proposed drillsite and access route; that I am familiar with the conditions which presently exist; that the statements made in this plan are, to the best of my knowledge, true and correct; and, that the work associated with the operations proposed herein will be performed by SUPRON ENERGY CORPORATION and its contractors subcontractors in conformity with this plan and the terms and conditions under which it is approved.

SUPRON ENERGY CORPORATION

A handwritten signature in black ink, reading "Rudy D. Motto". The signature is written in a cursive style with a large, stylized "M" and "T".

Rudy D. Motto
Area Superintendent
Phone: 325-3587