

UNITED STATES
DEPARTMENT OF THE INTERIOR
GEOLOGICAL SURVEY

APPLICATION FOR PERMIT TO DRILL, DEEPEN, OR PLUG BACK

1a. TYPE OF WORK

DRILL ☒DEEPEN ☐PLUG BACK ☐

b. TYPE OF WELL

OIL
WELL ☐GAS
WELL ☒

OTHER

SINGLE
ZONE ☒MULTIPLE
ZONE ☐

2. NAME OF OPERATOR

Northwest Production Corporation

3. ADDRESS OF OPERATOR

PO Box 289, Farmington, NM 87401

4. LOCATION OF WELL (Report location clearly and in accordance with any State requirements.)*

At surface

1450'S, 1630'W

At proposed prod. zone

same

14. DISTANCE IN MILES AND DIRECTION FROM NEAREST TOWN OR POST OFFICE*

16.5 miles Northeast of Lindrith, NM

15. DISTANCE FROM PROPOSED*

LOCATION TO NEAREST
PROPERTY OR LEASE LINE, FT.
(Also to nearest drlg. unit line, if any)

1450'

16. NO. OF ACRES IN LEASE

2568.02

17. NO. OF ACRES ASSIGNED
TO THIS WELL

162.80

18. DISTANCE FROM PROPOSED LOCATION*
TO NEAREST WELL, DRILLING, COMPLETED,
OR APPLIED FOR, ON THIS LEASE, FT.

600'

19. PROPOSED DEPTH

3375'

20. ROTARY OR CABLE TOOLS

Rotary

21. ELEVATIONS (Show whether DF, RT, GR, etc.)

6758' GL

22. APPROX. DATE WORK WILL START*

23.

PROPOSED CASING AND CEMENTING PROGRAM

SIZE OF HOLE	SIZE OF CASING	WEIGHT PER FOOT	SETTING DEPTH	QUANTITY OF CEMENT
12 1/4"	8 5/8"	24.0#	120'	106 cu.ft.circ.to surface
6 3/4"	2 7/8"	6.4#	3375'	194 cu.ft.to cover Ojo Alamo

Selectively perforate and sandwater fracture the Pictured Cliffs formation.

A 3000 psi WP and 6000 psi test double gate preventer equipped with blind and pipe rams will be used for blow out prevention on this well.

This gas is dedicated.

The SW/4 of Section 31 is dedicated to this well.

IN ABOVE SPACE DESCRIBE PROPOSED PROGRAM: If proposal is to deepen or plug back, give data on present productive zone and proposed new productive zone. If proposal is to drill or deepen directionally, give pertinent data on subsurface locations and measured and true vertical depths. Give blowout preventer program, if any.

24.

SIGNED

A. G. Buico

TITLE

Drilling Clerk

DATE

5-18-79

(This space for Federal or State office use)

PERMIT NO.

APPROVAL DATE

APPROVED BY

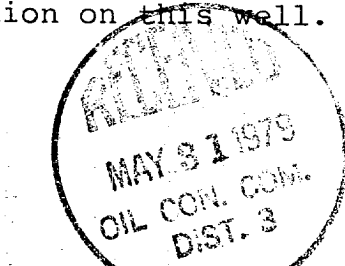
TITLE

DATE

CONDITIONS OF APPROVAL, IF ANY:

ok Frank

*See Instructions On Reverse Side



All distances must be from the outer boundaries of the Section.

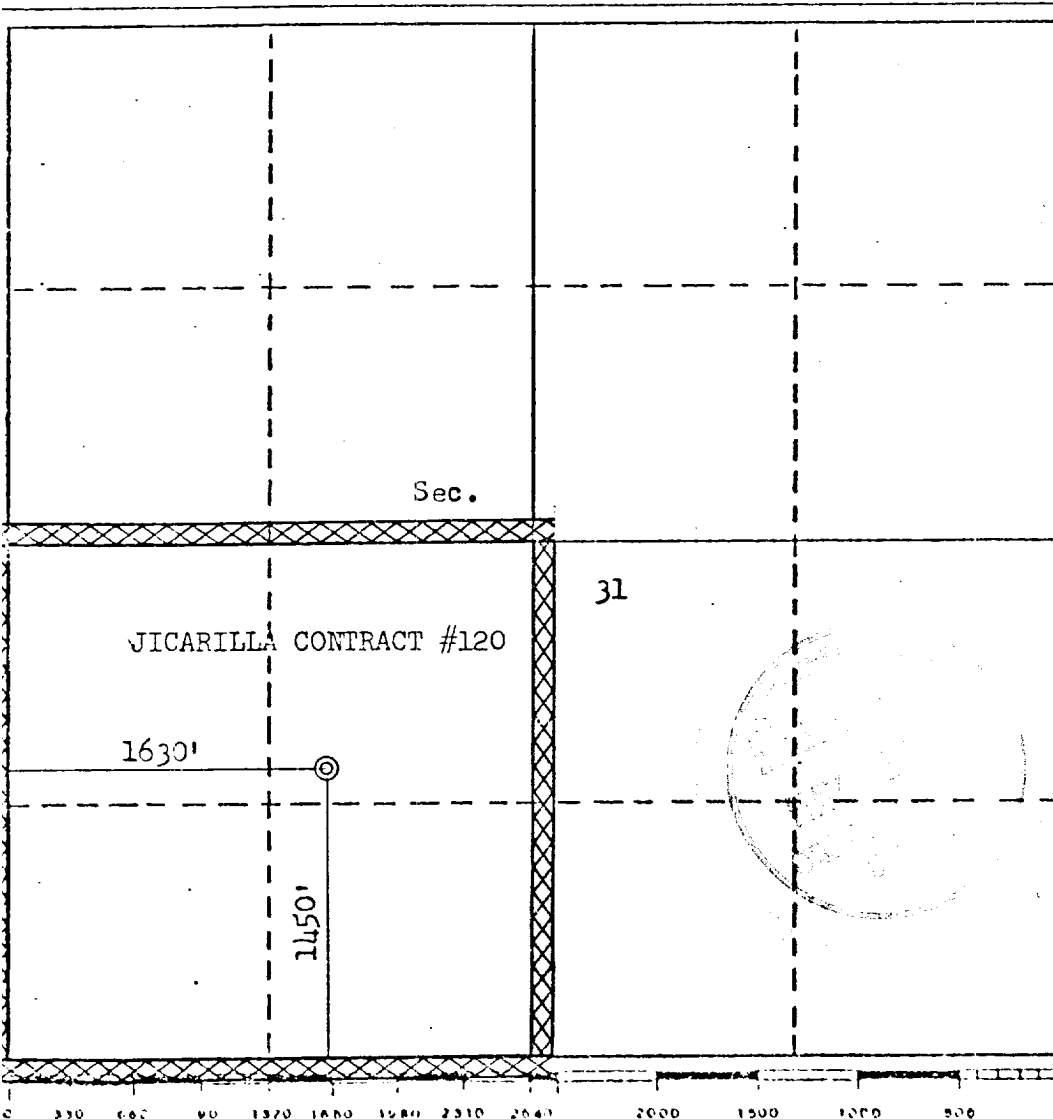
Operator NORTHWEST PRODUCTION CORPORATION			Lease (JICARILLA JICARILLA 120 "C" CONTRACT #120)		Well No. 18
Unit Letter K	Section 31	Township 26N	Range 7W	County Rio Arriba	
Actual Footage Location of Well:					
1450 feet from the South		line and 1630 feet from the West		line	
Ground Level Elev. 6758	Producing Formation Pictured Cliffs	Pool So. Blanco Pictured Cliffs		Dedicated Acreage: 162.80 Acres	

1. Outline the acreage dedicated to the subject well by colored pencil or hachure marks on the plat below.
2. If more than one lease is dedicated to the well, outline each and identify the ownership thereof (both as to working interest and royalty).
3. If more than one lease of different ownership is dedicated to the well, have the interests of all owners been consolidated by communitization, unitization, force-pooling, etc?

☐ Yes ☐ No If answer is "yes," type of consolidation _____

If answer is "no," list the owners and tract descriptions which have actually been consolidated. (Use reverse side of this form if necessary.) _____

No allowable will be assigned to the well until all interests have been consolidated (by communitization, unitization, forced-pooling, or otherwise) or until a non-standard unit, eliminating such interests, has been approved by the Division.



CERTIFICATION

I hereby certify that the information contained herein is true and complete to the best of my knowledge and belief.

D. P. Guisco

Name

Drilling Clerk

Position

Northwest Production Corp.

Company

5-18-79

Date

I hereby certify that the well location shown on this plat was plotted from field notes of actual surveys made by me or under my supervision, and that the same is true and correct to the best of my knowledge and belief.

Date Surveyed
May 3, 1979

Registered Professional Engineer

and/or Land Surveyor

Fred B. Kerr, Jr.

Fred B. Kerr, Jr.

Certificate No. 1588, JR.

3950

northwest production corporation

Multi-Point Surface Use Plan

Jicarilla 120 C #18

1. Existing Road - Please refer to Map No. 1 which shows the existing roads. New roads which will be required have been marked on this map. All existing and new roads will be properly maintained during the duration of this project.
2. Planned Access Roads - Please refer to Map No. 1. The grade of the access roads will be consistent with that of the local terrain. The road surface will not exceed twenty feet (20') in width. Upon completion of the project, the access road will be adequately drained to control soil erosion. Drainage facilities may include ditches, water bars, culverts or any other measure deemed necessary by trained Company personnel to insure proper drainage. Gates and/or cattleguards will be installed if necessary.
3. Location of Existing Wells - Please refer to Map No. 2.
4. Location of Tank Batteries, Production Facilities, and Production Gathering and Service Lines - Please refer to Maps No. 1 and No. 2. Map No. 2 shows the existing gas gathering lines. Map No. 1 shows the existing roads and new proposed access roads. All known production facilities are shown on these two maps.
5. Location and Type of Water Supply - Water for the proposed project will be obtained from Bull Pasture Water Well.
6. Source of Construction Materials - No additional materials will be required to build either the access road or the proposed location.
7. Methods of Handling Waste Materials - All garbage and trash materials will be put into a burn pit shown on the attached Location Plat No. 1. When clean-up operations are begun on the proposed project, the burn pit with its refuse will be buried to a depth of at least three feet (3'). A latrine, the location of which is also shown on Plat No. 1,

7. cont'd. will be provided for human waste. If large amounts of liquids are left in the reserve pit after completion of the project, the pit will be fenced until the liquids have had adequate time to dry. The location clean-up will not take place until such time as the reserve pit can be properly covered over to prevent run-off from carrying any of these materials into the watershed. No earthen pit will be located on natural drainages; all earthen pits will be so constructed as to prevent leakage from occurring.
8. Ancillary Facilities - No camps or airstrips will be associated with this project.
9. Wellsite Layout - Please refer to the attached Plat No. 1.
10. Plans for Restoration of the Surface - After completion of the proposed project, the location will be cleaned and leveled. The location will be left in such a condition that will enable reseeding operations to be carried out. Seed mixture as designated by the responsible government agency will be used. The reseeding operation will be performed during the time period set forth by the regulatory body. The location production equipment will be painted as designated by the responsible government agency.
11. Other Information - The terrain is sagebrush flats with sagebrush and cedar growin. Deer and cattle are occasionally seen on the proposed project site.
12. Operator's Representative - W.D. Dawson, PO Box 990, Farmington, NM
13. Certification - I hereby certify that I, or persons under my direct supervision, have inspected the proposed drillsite and access route; that I am familiar with the conditions which presently exist; that the statements made in this plan are, to the best of my knowledge, true and correct; and that the work associated with the operations proposed herein will be performed by El Paso Natural Gas Company and its contractors and sub-contractors in conformity with this plan and the terms and conditions under which it is approved.

L. A. Aimes

L. A. Aimes
Project Drilling Engineer

May 18, 1979

Operations Plan - Jicarilla 120 C #18

I. Location: 1450'S, 1630'W, Section 31, T-26-N, R-4-W, Rio Arriba County, NM

Field: So. Blanco Pictured Cliffs

Elevation: 6768'GL

II. Geology:

A. Surface Formation: San Jose

Sub-surface Formation Tops:

Ojo Alamo	2740'	Pictured Cliffs	3210'
Kirtland	2875'	Lewis	3335'
Fruitland	3095'	Total Depth	3375'

B. Logging Program: Induction Electric and Gamma Ray Density at TD.

C. Coring: none

D. Testing: none

III. Drilling:

A. Anticipated Starting Date and Duration of the Project:

1979 Drilling Program - approximately 4 days to complete.

B. Circulating Medium: Treated water and a low solids gel base mud will be used from surface to TD.

IV. Materials:

A. Casing Program:	<u>Hole Size</u>	<u>Depth</u>	<u>Csg. Size</u>	<u>Wt. & Grade</u>
	12 1/4"	120'	8 5/8"	24.0# J-55
	6 3/4"	3375'	2 7/8"	6.4# J-55

B. Float Equipment: 8 5/8" surface casing - cement guide shoe.

2 7/8" production casing - 10' shoe joint with notched collar for guide shoe and 2 7/8" latch down baffle on top. Two 3 1/16" balls and one 2 7/8" latch down plug.

C. Tubing: none

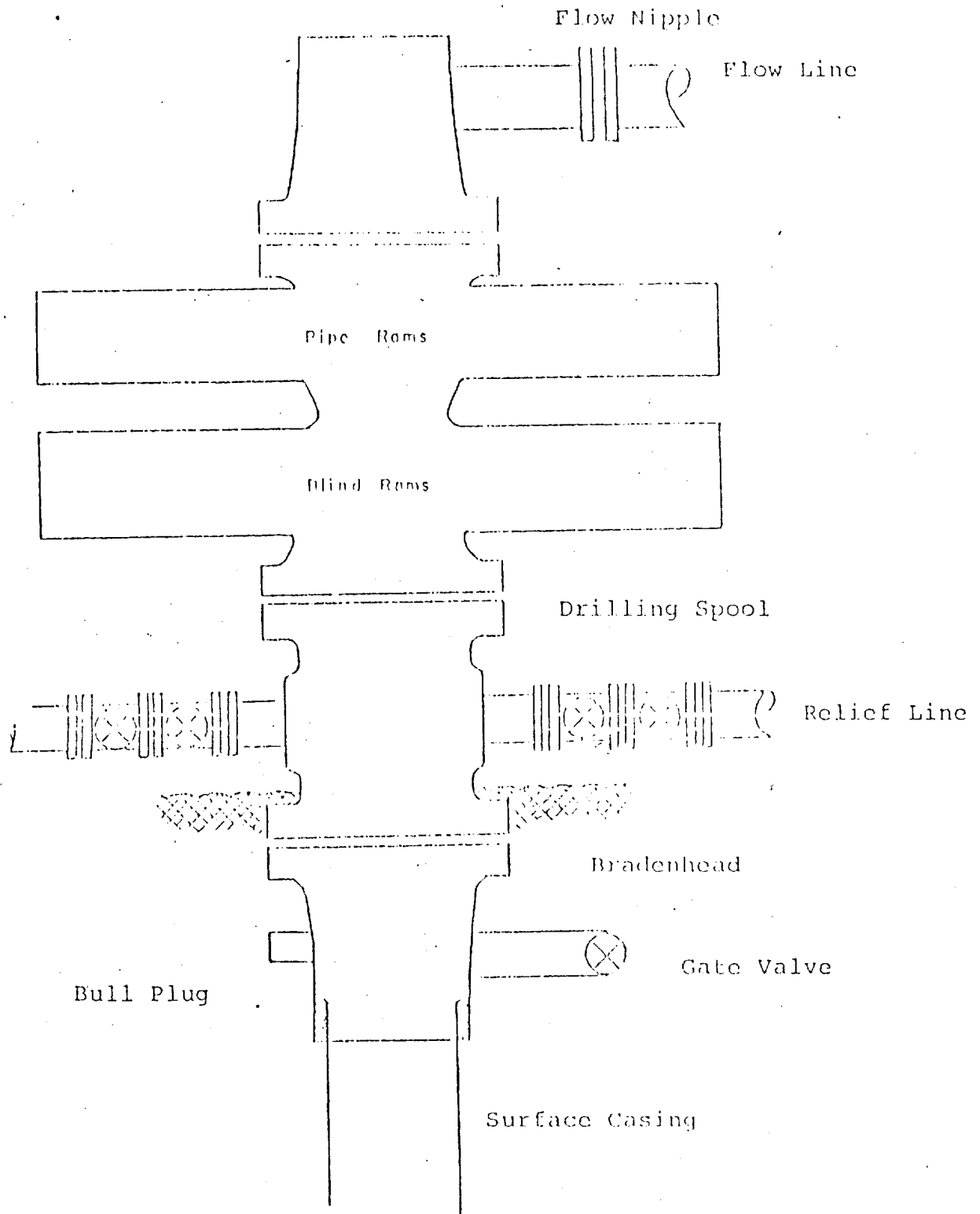
D. Wellhead Equipment: Larkin wellhead (fig. 75)

V. Cementing:

8 5/8" surface casing - 90 sks. of Class "B" cement with 1/4# gel-flake per sack and 3% calcium chloride (106 cu.ft. of slurry, 100% excess to circulate to surface). WOC 12 hrs. Test casing wellhead and BOP to 600#/30 minutes.

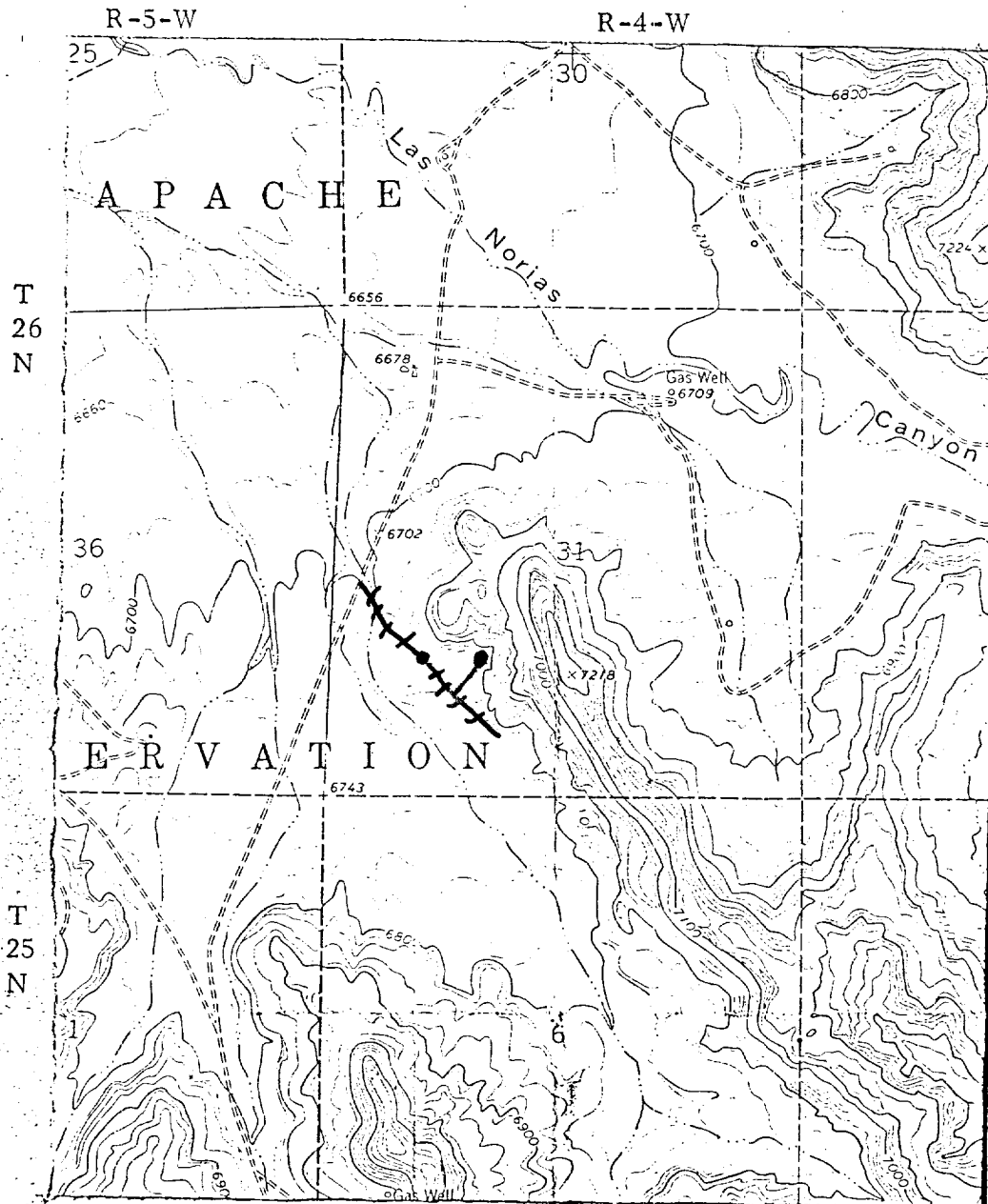
2 7/8" production - 69 sks. 65/35 Class "B" Poz with 6% gel, 2% CaCl₂, and 8.3 gallons water per sack followed by 70 sks. Class "B" neat cement (194 cu.ft. slurry, 50% excess to cover Ojo Alamo). Run temperature survey after 12 hrs.

Typical Mud-Drilled B.O.P. Installation
for Pictured Cliffs Well



8" Series 900 Double Gate BOP, rated
at 3000 psi Working Pressure

NORTHWEST PRODUCTION CORPORATION
Jicarilla 120C #18
SW 31-26-4



MAP #1

LEGEND OF RIGHT-OF-WAYS

EXISTING ROADS	—
EXISTING PIPELINES	— + + + —
EXISTING ROAD & PIPELINE	— + + + —
PROPOSED ROADS	- - -
PROPOSED PIPELINES	- - - + + + - - -
PROPOSED ROAD & PIPELINE	- - - + + + - - -

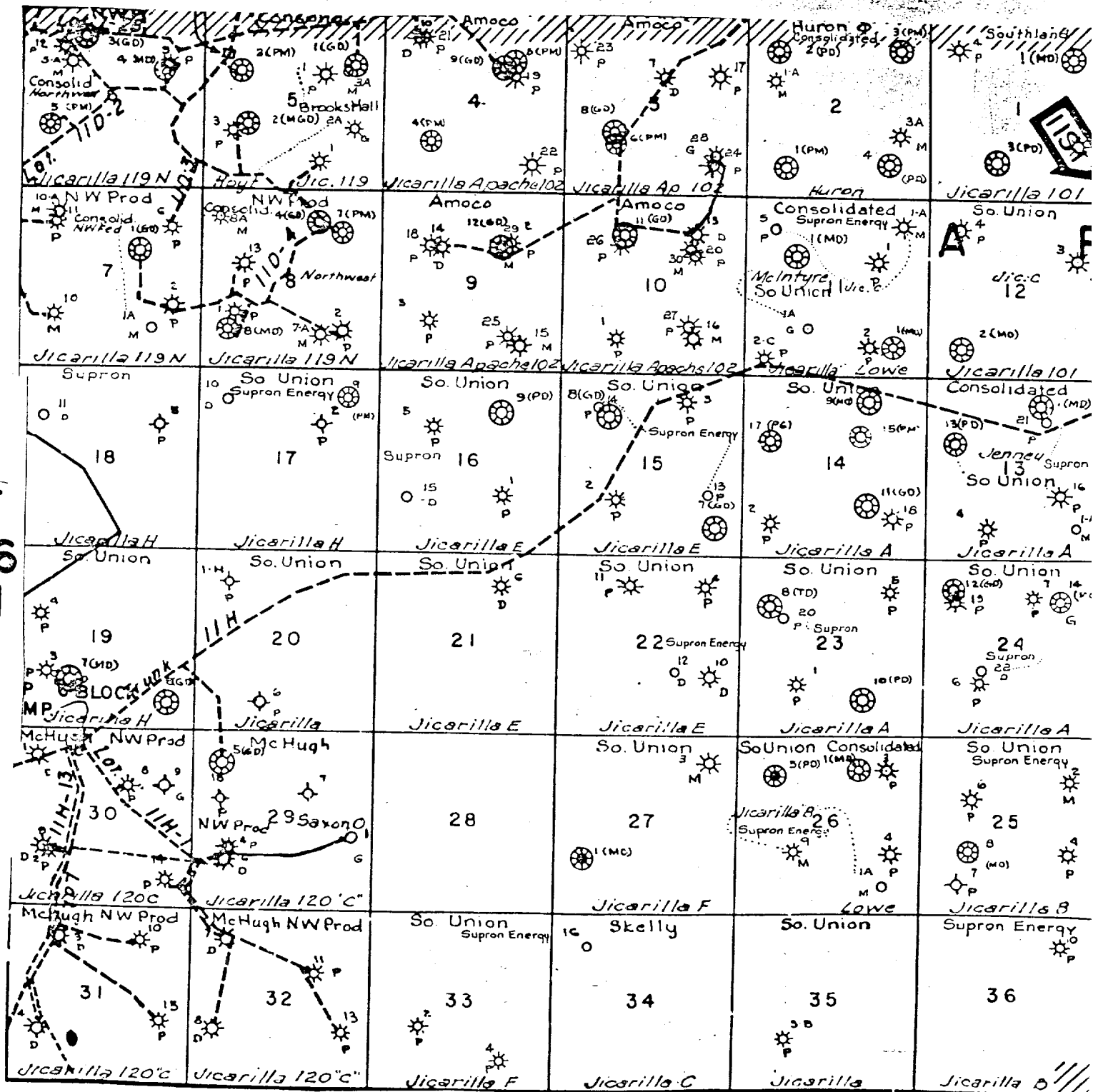
NORTHWEST PRODUCTION CORPORATION

Jicarilla 120C #18

SW 31-26-4

R-4-W

T
26
N



MAP #2

Proposed Location