

NO. OF COPIES RECEIVED	6
DISTRIBUTION	
SANTA FE	1
FILE	1
U.S.G.S.	2
LAND OFFICE	1
OPERATOR	1

NEW MEXICO OIL CONSERVATION COMMISSION

30-039-2228
Form C-101
Revised 1-4-65

5A. Indicate Type of Lease	
STATE <input checked="" type="checkbox"/>	FEE <input type="checkbox"/>
5. State Oil & Gas Lease No.	
E 291-17	

APPLICATION FOR PERMIT TO DRILL, DEEPEN, OR PLUG BACK

1a. Type of Work		7. Unit Agreement Name	
b. Type of Well OIL WELL <input type="checkbox"/> GAS WELL <input checked="" type="checkbox"/> OTHER <input type="checkbox"/>		8. Farm or Lease Name State A	
2. Name of Operator Caulkins Oil Company		9. Well No. 268 E	
3. Address of Operator P.O. Box 780, Farmington, New Mexico		10. Field and Pool, or Wildcat Otero Chacra, Blunco MN Basin, Dakota	
4. Location of Well UNIT LETTER P LOCATED 1170 FEET FROM THE South LINE AND 1150 FEET FROM THE East LINE OF SEC. 16 TWP. 26N RGE. 6W NMPM		12. County Rio Arriba	
19. Proposed Depth 7300'		19A. Formation Dakota	
20. Rotary or C.T. Rotary		21. Elevations (Show whether DF, RT, etc.) 6425 Gr.	
21A. Kind & Status Plug. Bond		21B. Drilling Contractor Aztec Well Service	
22. Approx. Date Work will start May 1, 1980			

PROPOSED CASING AND CEMENT PROGRAM

SIZE OF HOLE	SIZE OF CASING	WEIGHT PER FOOT	SETTING DEPTH	SACKS OF CEMENT	EST. TOP
15"	10 3/4"	32.75#	350'	250	Surface
8 3/4"	7"	23 & 26#	7300'	1050	Surface

It is proposed to drill Dakota infill well to approx 7300'. 7" 23 & 26# K-55 Smls Csg will be run to TD and cemented in 3 stages with sufficient cement to circulate cement to surface.

Subject to approval by OCD, well will be Dual Completed and Downhole Commingled with packer set between Dakota and Mesa Verde-Chacra Commingled Zones. All three Zones will be perforated and sand-water frac'ed individually to stimulate production.

A 10" 3000# WP 6000# test BOP will be in use at all times while drilling below surface pipe.

APPROVAL VALID FOR 90 DAYS FROM DATE OF DRILLING COMMENCEMENT. This acreage dedicated to Gas Company of New Mexico.

EXPIRES 3-27-80

IN ABOVE SPACE DESCRIBE PROPOSED PROGRAM: IF PROPOSAL IS TO DEEPEN OR PLUG BACK, GIVE DATA ON PRESENT PRODUCTION ZONE AND PROPOSED NEW PRODUCTION ZONE. GIVE BLOWOUT PREVENTER PROGRAM, IF ANY.

I hereby certify that the information above is true and complete to the best of my knowledge and belief.

Signed Charles E. Verguer Title Superintendent Date 12-21-79

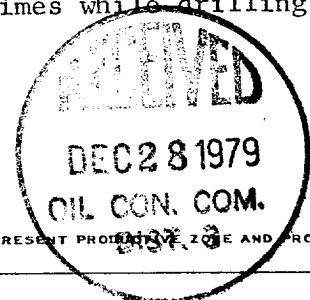
(This space for State Use)

APPROVED BY Frank S. Perry TITLE DEPUTY OIL & GAS INSPECTOR, DIST. #3 DATE DEC 28 1979

CONDITIONS OF APPROVAL, IF ANY:

OK. NLMU 12-18-15

Will sign 12/22/79



NEW MEXICO OIL CONSERVATION COMMISSION
WELL LOCATION AND ACREAGE DEDICATION PLAT

Form C-102
Supersedes C-128
Effective 1-1-65

All distances must be from the outer boundaries of the Section.

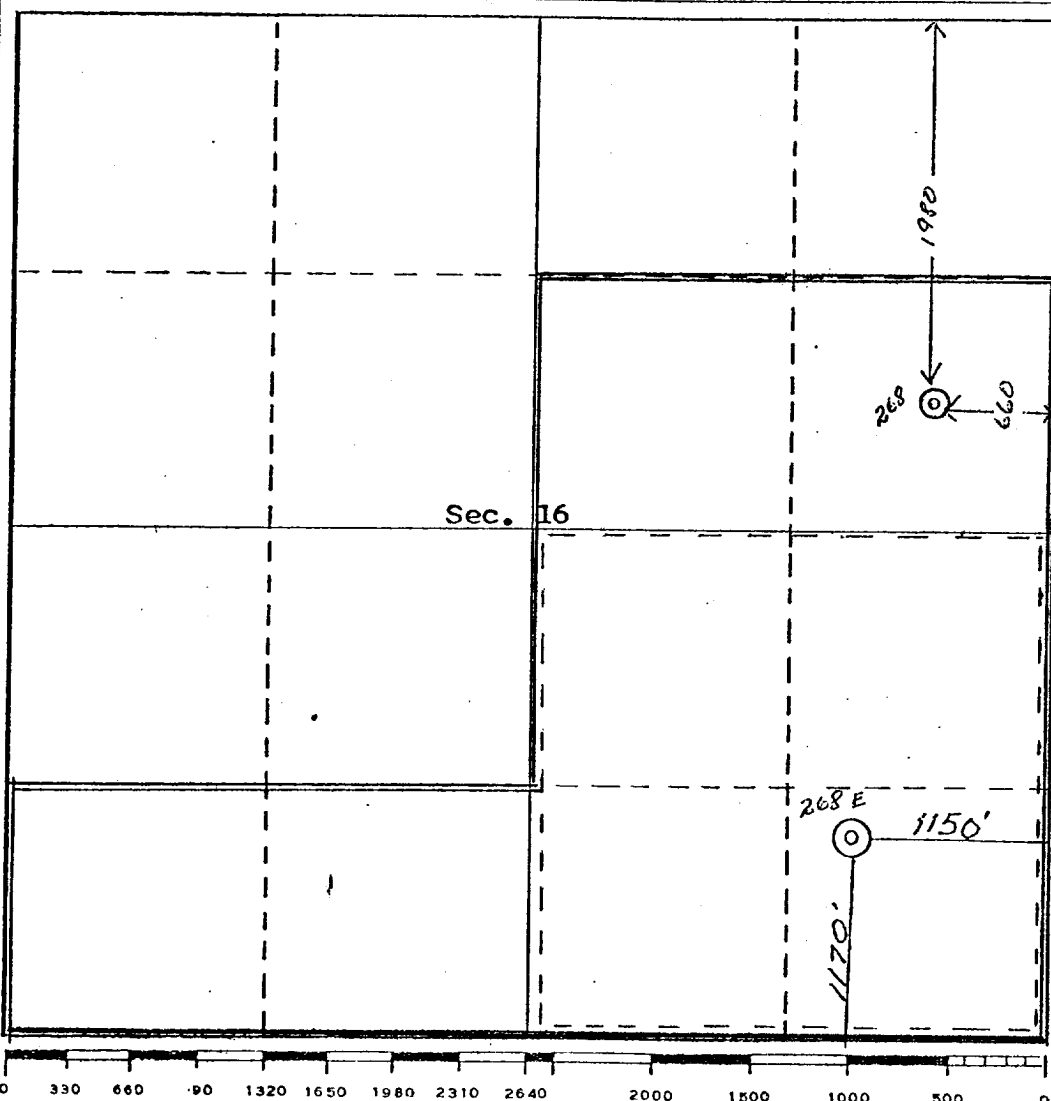
Operator CAULKINS OIL COMPANY			Lease State A		Well No. 268-E
Unit Letter P	Section 16	Township 26 NORTH	Range 6 WEST	County RIO ARriba	
Actual Footage Location of Well: 1170 feet from the SOUTH line and 1150 feet from the EAST line					
Ground Level Elev. 6425.0	Producing Formation Chacra-Nesa Verde-Dakota	Pool Otero Chacra Blanco Mesa Verde Basing Dakota	Dedicated Acreage: 160 Chacra 320 MV & Dak. Acres		

1. Outline the acreage dedicated to the subject well by colored pencil or hachure marks on the plat below.
2. If more than one lease is dedicated to the well, outline each and identify the ownership thereof (both as to working interest and royalty).
3. If more than one lease of different ownership is dedicated to the well, have the interests of all owners been consolidated by communitization, unitization, force-pooling, etc?

☐ Yes ☐ No If answer is "yes," type of consolidation _____

If answer is "no," list the owners and tract descriptions which have actually been consolidated. (Use reverse side of this form if necessary.) _____

No allowable will be assigned to the well until all interests have been consolidated (by communitization, unitization, forced-pooling, or otherwise) or until a non-standard unit, eliminating such interests, has been approved by the Commission.



CERTIFICATION

I hereby certify that the information contained herein is true and complete to the best of my knowledge and belief.

Charles E. Verquer

Name
Charles E. Verquer

Position
Superintendent

Company
Caulkins Oil Company

Date
12-19-79

I hereby certify that the well location shown on this plat was plotted from field notes of actual measurements made by me or under my supervision, and that the same is true and correct to the best of my knowledge and belief.

7 December 1979

Date Surveyed
Curtis T. Stocking
Registered Professional Engineer
and/or Land Surveyor
Curtis T. Stocking
5980
Certificate No. **15 C. STOCKING**