

All distances must be from the corner boundaries of the Section

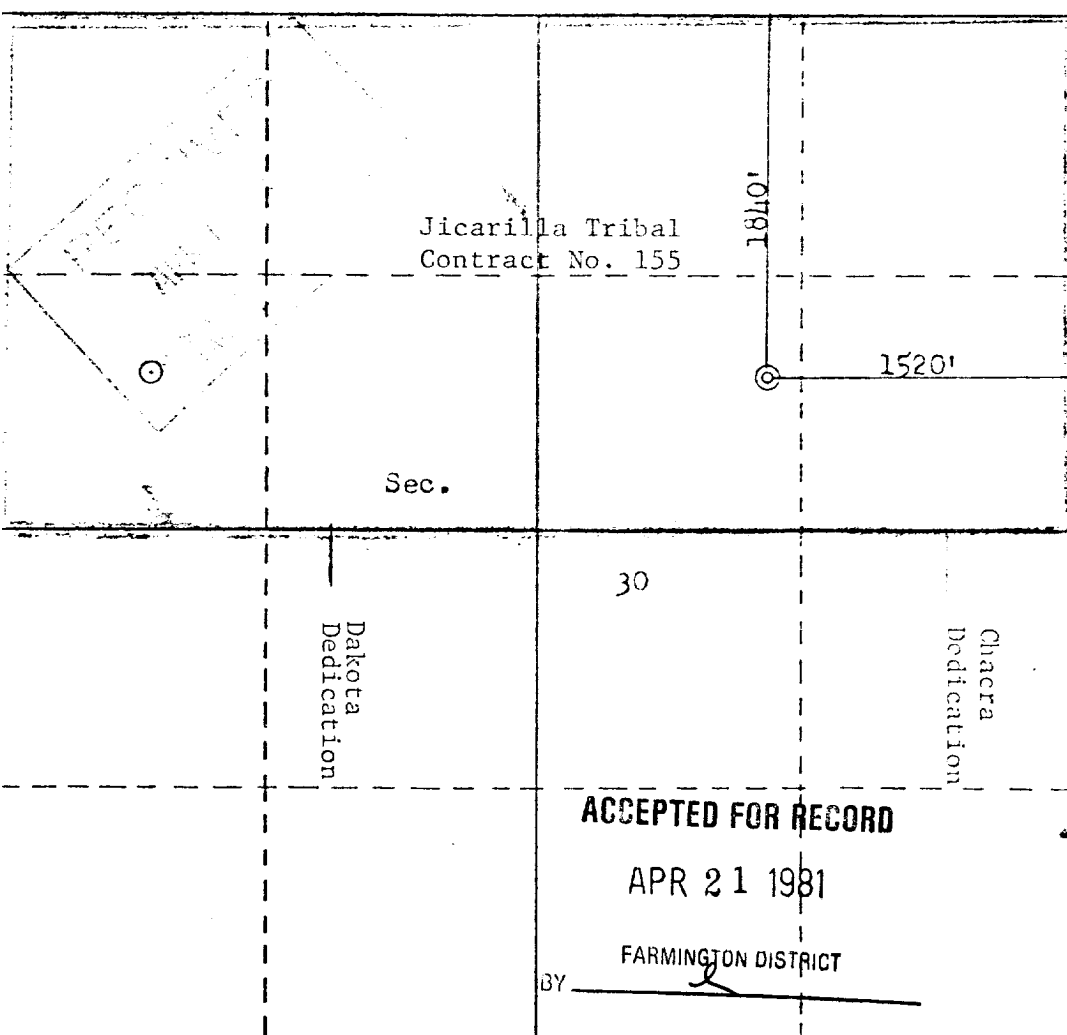
Operator AMOCO PRODUCTION COMPANY		Lease JICARILLA CONTRACT 155		Well No. 16-E	
Unit Letter G	Section 30	Township 26N	Range 5W	County Rio Arriba	
Actual Footage Location of Well: 1840 feet from the North line and 1520 feet from the East line					
Ground Level Elev. 6680	Producing Formation Dakota/Chacra		Pool Basin Dakota/Otero Chacra		Dedicated Acreage: 320/160 Acres

1. Outline the acreage dedicated to the subject well by colored pencil or hatchure marks on the plat below.
2. If more than one lease is dedicated to the well, outline each and identify the ownership thereof (both as to working interest and royalty).
3. If more than one lease of different ownership is dedicated to the well, have the interests of all owners been consolidated by communitization, unitization, force-pooling, etc?

☐ Yes ☐ No If answer is "yes," type of consolidation _____

If answer is "no," list the owners and tract descriptions which have actually been consolidated. (Use reverse side of this form if necessary.) _____

No allowable will be assigned to the well until all interests have been consolidated (by communitization, unitization, forced-pooling, or otherwise) or until a non-standard unit, eliminating such interests, has been approved by the Commission.



CERTIFICATION

I hereby certify that the information contained herein is true and complete to the best of my knowledge and belief.

B. E. Fackrell

Name

B. E. FACKRELL

Position

DISTRICT ENGINEER

Company

AMOCO PRODUCTION COMPANY

Date

FEBRUARY 1, 1980

I hereby certify that the well location shown on this plat was plotted from field notes of actual surveys made by me or under my supervision, and that the same is true and correct to the best of my knowledge and belief.

Date Surveyed

January 23, 1980

Registered Professional Engineer and/or Land Surveyor

Fred S. Kerr Jr.

Certificate No. 3950

3950