

UNITED STATES
DEPARTMENT OF THE INTERIOR
GEOLOGICAL SURVEY

APPLICATION FOR PERMIT TO DRILL, DEEPEN, OR PLUG BACK

1a. TYPE OF WORK

DRILL ☒DEEPEN ☐PLUG BACK ☐

b. TYPE OF WELL

OIL
WELL ☐GAS
WELL ☒

OTHER

SINGLE
ZONE ☒MULTIPLE
ZONE ☐

2. NAME OF OPERATOR

Supron Energy Corporation

3. ADDRESS OF OPERATOR

P.O. Box 808, Farmington, New Mexico 87401

4. LOCATION OF WELL (Report location clearly and in accordance with any State requirements.*)

At surface 925 F/South line and 1628 F/West line

At proposed prod. zone Same as above

14. DISTANCE IN MILES AND DIRECTION FROM NEAREST TOWN OR POST OFFICE*

14 Miles North of Oijto, N.M.

15. DISTANCE FROM PROPOSED*

LOCATION TO NEAREST
PROPERTY OR LEASE LINE, FT.
(Also to nearest drlg. unit line, if any) 925 Feet

16. NO. OF ACRES IN LEASE

2560

17. NO. OF ACRES ASSIGNED
TO THIS WELL320 (S $\frac{1}{2}$)

18. DISTANCE FROM PROPOSED LOCATION*

TO NEAREST WELL, DRILLING, COMPLETED,
OR APPLIED FOR, ON THIS LEASE, FT. 300 ft.

19. PROPOSED DEPTH

7462

20. ROTARY OR CABLE TOOLS

Rotary

21. ELEVATIONS (Show whether DF, RT, GR, etc.)

6571 GR

22. APPROX. DATE WORK WILL START*

July 20, 1980

23. PROPOSED CASING AND CEMENTING PROGRAM

SIZE OF HOLE	SIZE OF CASING	WEIGHT PER FOOT	SETTING DEPTH	QUANTITY OF CEMENT
12 $\frac{1}{4}$ "	8-5/8"	24.00	250	175 sx
7-7/8"	4 $\frac{1}{2}$ "	10.50	7462'	1100 sx

The surface hole will be drilled to + 250 ft. Casing will be run and cemented with the cement being circulated back to the surface. The surface casing will be pressure tested. The well will be drilled to T.D. of approx. 7462 ft. using a starch base mud as the circulating medium. Pipe will be run and cemented in three stages as follows: First stage 400 sx of 50-50 POZ mix, Second stage 450 sx of 50-50 POZ mix followed by 50 sx of class "B" cement and the Third stage 150 sx of HOWCO Lite followed by 50 sx of class "B" with the estimated cement top to be at 2100 ft. The pipe will be pressure tested and the Dakota zone will be perforated and fractured to stimulate production. The well will be cleaned up and tubing run and landed above the Dakota zone. The wellhead will be nipped down and the well tested.

IN ABOVE SPACE DESCRIBE PROPOSED PROGRAM: If proposal is to deepen or plug back, give data on present productive zone and proposed new productive zone. If proposal is to drill or deepen directionally, give pertinent data on subsurface locations and measured and true vertical depths. Give blowout preventer program, if any.

24.

SIGNED

Rudy D. Motto

(This space for Federal or State office use)

TITLE

U.S. GEOLOGICAL SURV.
FARMINGTON, N. M.
Area Superintendent

DATE 6-12-80

PERMIT NO.

APPROVAL DATE

APPROVED BY

TITLE

CONDITIONS OF APPROVAL, IF ANY:

ok Frank

NMOC

5. LEASE DESIGNATION AND SERIAL NO.

Contract No. 153

6. IF INDIAN, ALLOTTEE OR TRIBE NAME

Jicarilla Apache

7. UNIT AGREEMENT NAME

8. FARM OR LEASE NAME

Jicarilla "J"

9. WELL NO.

No. 10 E

10. FIELD AND POOL, OR WILDCAT

Basin Dakota

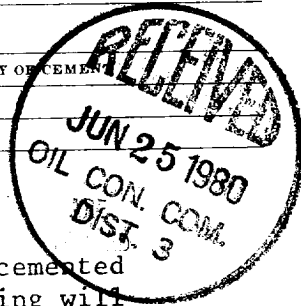
11. SEC., T., E., M., OR BLK.
AND SURVEY OR AREASec. 26, T26N, R5W,
N.M.P.M.

12. COUNTY OR PARISH

13. STATE

Rio Arriba

New Mexico

RECEIVED
JUN 13 1980APPROVED
JUN 13 1980James F. Smith
JAMES F. SMITH
DIST. CT. IN CHARGE

All distances must be from the outer boundaries of the Section.

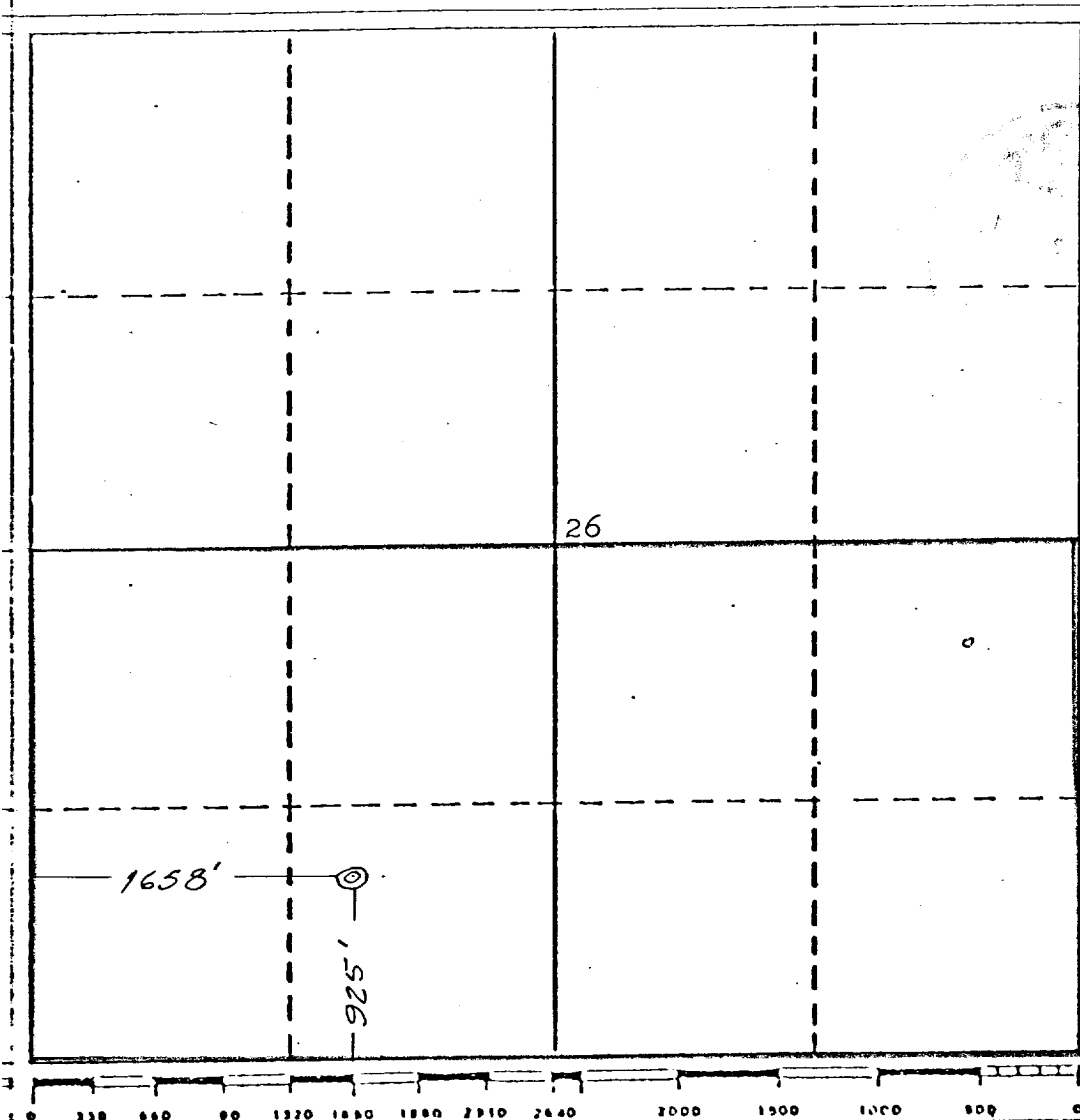
Operator SUPRON ENERGY CORPORATION			Lease JICARILLA "J"		Well No. 10-E
Unit Letter N	Section 26	Township 26 NORTH	Range 5 WEST	County RIO ARriba	
Actual Postage Location of Well: 925 feet from the SOUTH line and 1658 feet from the WEST line					
Ground Level Elev. 6571	Producing Formation DAKOTA		Pool BASIN Dakota	Dedicated Acreage S/2 320 Acres	

1. Outline the acreage dedicated to the subject well by colored pencil or hatchure marks on the plat below.
2. If more than one lease is dedicated to the well, outline each and identify the ownership thereof (both as to working interest and royalty).
3. If more than one lease of different ownership is dedicated to the well, have the interests of all owners been consolidated by communitization, unitization, force-pooling, etc?

☐ Yes ☐ No If answer is "yes," type of consolidation _____

If answer is "no," list the owners and tract descriptions which have actually been consolidated. (Use reverse side of this form if necessary.) _____

No allowable will be assigned to the well until all interests have been consolidated (by communitization, unitization, forced-pooling, or otherwise) or until a non-standard unit, eliminating such interests, has been approved by the Division.



CERTIFICATION	
I hereby certify that the information contained herein is true and complete to the best of my knowledge and belief.	
<i>Rudy D. Motto</i>	
Name	Rudy D. Motto
Position	Area Superintendent
Company	SUPRON ENERGY CORPORATION
Date	February 29, 1980
I hereby certify that the information shown on this plat was plotted from field notes of actual surveys made by me or under my supervision, and that the same is true and correct to the best of my knowledge and belief.	
Date Surveyed	February 6, 1980
Registered Professional Engineer and Land Surveyor	<i>James P. Leese</i>
Certificate No.	1463

SUPRON ENERGY CORPORATION

JICARILLA "J" No. 10-E
SW $\frac{1}{4}$ Sec. 26, T-26N, R-5W, N.M.P.M.

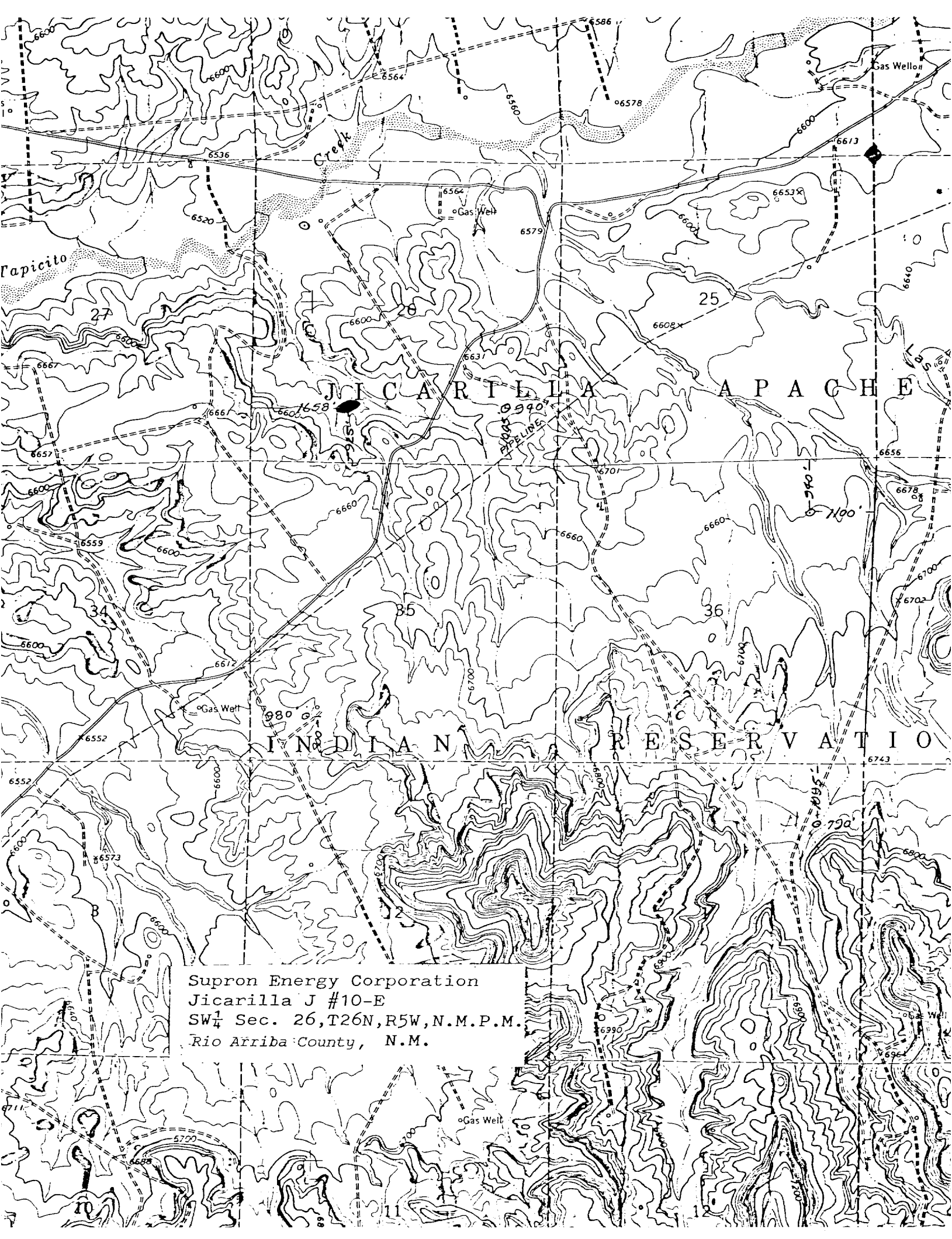
Rio Arriba County, New Mexico

1. The Geologic name of the surface formation is, "Wasatch".
2. The estimated tops of important Geologic markers are:
 - A. Ojo Alamo 2562 ft.
 - B. Fruitland 2682 ft.
 - C. Pictured Cliffs 3007 ft.
 - D. Chacra 3457 ft.
 - E. Cliff House 4667 ft.
 - F. Point Lookout 5215 ft.
 - G. Gallup 6357 ft.
 - H. Greenhorn 7129 ft.
 - I. Dakota 7209 ft.
3. The estimated depths at which anticipated water, oil or other mineral bearing formations are expected to be encountered are:
 - A. Ojo Alamo 2562 ft. Water
 - B. Fruitland 2682 ft. Water
 - C. Pictured Cliffs 3007 ft. Gas
 - D. Chacra 3457 ft. Dry
 - E. Cliff House 4667 ft. Gas
 - F. Point Lookout 5225 ft. Gas
 - G. Gallup 6357 ft. Gas
 - H. Greenhorn 7129 ft. Shale
 - I. Dakota 7209 ft. Gas
4. The casing program is shown on form 9-331C and all casing is new.
5. The lessee's pressure control equipment schematics are attached, along with minimum specifications, testing procedures, and frequencies.
6. The type, estimated volumes, and characteristics of the circulating medium are as follows:
 - A. 0 - 250 ft. Natural Mud.
 - B. 250 - 7462 ft. Permaloid non dispersed mud containing approx. 180 sx gel, 70 sx of permaloid and 20 sx of CMC.
7. The auxiliary equipment to be used will be floats at the bit and a sub on the floor with a full opening valve to be stabbed into the drill pipe when the kelly is not in the string.
8. The well is in an area which is partially developed; therefore we will not have a testing and coring program. The logging program is as follows:
 - A. E.S. Induction
 - B. Gamma Ray Density
 - C. Gamma Ray Correlation
 - D. Cement Bond Log
9. We do not expect to find any abnormal pressures, temperatures or hydrogen sulfide problems in this partially developed area.
10. The anticipated starting date for this well is July 20, 1980.

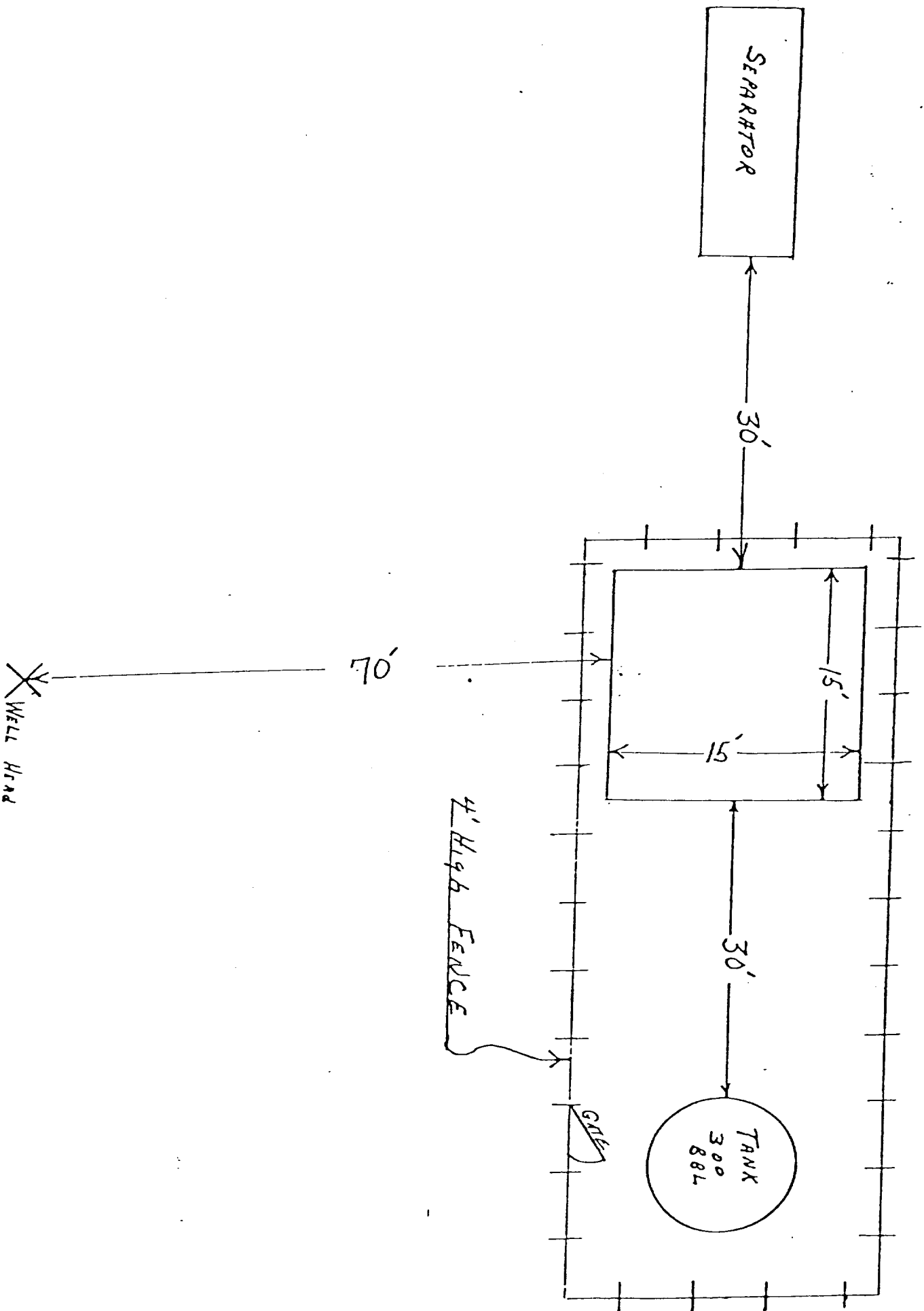
SUPRON ENERGY CORPORATION
JICARILLA "J" NO. 10-E
SW/4 Sec. 26, T-26N, R-5W, N.M.P.M.
Rio Arriba County, New Mexico

The following attachments are included with this application:

1. Topographical map showing proposed location and access road.
2. Access road not required.
3. Map showing existing producing facilities.
4. Location of surface equipment if required.
5. Drilling and completion water will be obtained from the Jicarilla "J" Water well.
6. All pits will be fenced and constructed in such a way as to prevent litter on the location.
7. We will dispose of all waste by placing it in the reserve pit and burying it when the well is completed.
8. There will be no camp at or near the well site.
9. There will be no air strip.
10. A plat is attached showing the location of the rig, mud tanks, reserve pit, burn pit, etc.
11. A letter of certification is attached. The operator representative for compliance purposes is Rudy D. Mott, Area Superintendent, P.O. Box 808, Farmington, New Mexico 87401. Phone (505) 325-3587.
12. After the well is completed, the location will be cleaned up, and bladed. The reserve pit will be allowed to dry and then filled and restored to its natural state.
13. The soil is sandy clayey loam, the principal vegetation is sagebrush, greasewood, ground lichen, grama, galleta, brome.



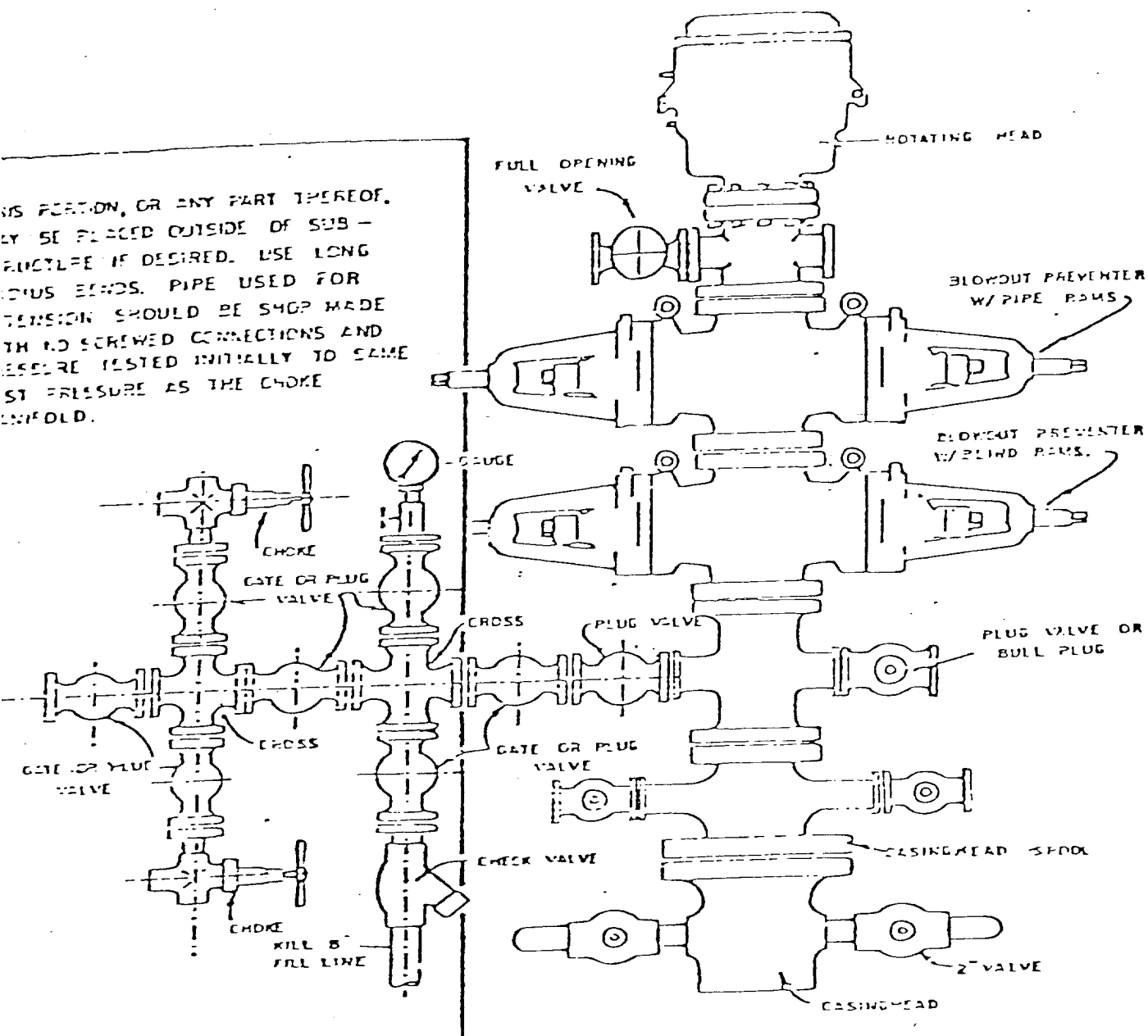
Supron Energy Corporation
Jicarilla J #10-E
SW $\frac{1}{4}$ Sec. 26, T26N, R5W, N.M.P.M.
Rio Arriba County, N.M.



Blowout Preventer will be tested daily and prior to drilling out with the results to be logged on the drillers report.

The B.O.P. and all valve and fittings are rated at 3000 psi working pressure, and hydraulically operated

THIS PORTION, OR ANY PART THEREOF, MUST BE PLACED OUTSIDE OF SUB - SURFACE IF DESIRED. USE LONG JOINTS. PIPE USED FOR TENSION SHOULD BE SHOP MADE WITH NO SCREWED CONNECTIONS AND BE TESTED INITIALLY TO SAME TEST PRESSURE AS THE CHOKER UNFOLD.

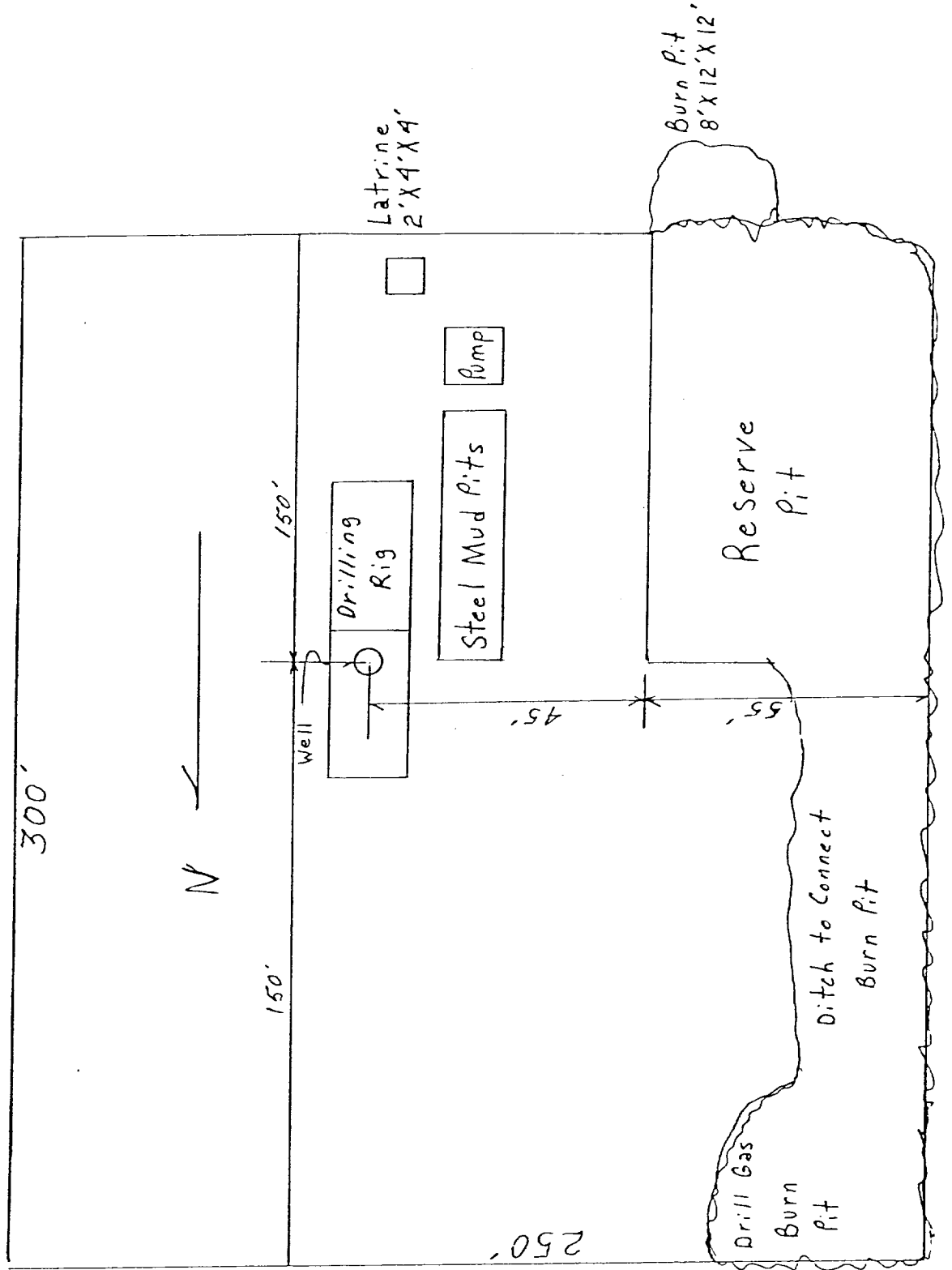


BLOWOUT PREVENTER HOOKUP

LOCATION AND EQUIPMENT LAYOUT

JICARILLA "J" NO. 10-E
 925 Ft./S; 1658 ft./W line
 Sec. 26, T-26N, R-5W
 Rio Arriba County, New Mexico

NO ROAD



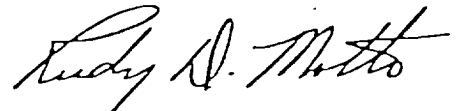
SUPRON ENERGY CORPORATION

POST OFFICE BOX 808

FARMINGTON, NEW MEXICO 87401

I hereby certify that I, or persons under my direct supervision, have inspected the proposed drillsite and access route; that I am familiar with the conditions which presently exist; that the statements made in this plan are, to the best of my knowledge, true and correct; and, that the work associated with the operations proposed herein will be performed by SUPRON ENERGY CORPORATION and its contractors subcontractors in conformity with this plan and the terms and conditions under which it is approved.

SUPRON ENERGY CORPORATION

A handwritten signature in cursive script, reading "Rudy D. Motto".

Rudy D. Motto
Area Superintendent
Phone: 325-3587