

UNITED STATES
DEPARTMENT OF THE INTERIOR
GEOLOGICAL SURVEY

APPLICATION FOR PERMIT TO DRILL, DEEPEN, OR PLUG BACK

1a. TYPE OF WORK

DRILL ☒DEEPEN ☐PLUG BACK ☐

b. TYPE OF WELL

OIL
WELL ☐GAS
WELL ☒

OTHER

SINGLE
ZONE ☒MULTIPLE
ZONE ☐

2. NAME OF OPERATOR

Supron Energy Corporation

3. ADDRESS OF OPERATOR

P. O. Box 808, Farmington, New Mexico 87401

4. LOCATION OF WELL (Report location clearly and in accordance with any State requirements.*)

At surface

1005/South line & 940/East line.

At proposed prod. zone Same as above.

14. DISTANCE IN MILES AND DIRECTION FROM NEAREST TOWN OR POST OFFICE*

14 Miles South East

15. DISTANCE FROM PROPOSED LOCATION TO NEAREST PROPERTY OR LEASE LINE, FT.
(Also to nearest drlg. unit line, if any)

4275' / nearest lease line.

790' / Drlg. Unit line.

16. NO. OF ACRES IN LEASE
2560

18. DISTANCE FROM PROPOSED LOCATION* TO NEAREST WELL, DRILLING, COMPLETED, OR APPLIED FOR, ON THIS LEASE, FT.

150 Ft.

19. PROPOSED DEPTH

3250 ft.

17. NO. OF ACRES ASSIGNED TO THIS WELL

160 (SE 1/4)

20. ROTARY OR CABLE TOOLS

Rotary

21. ELEVATIONS (Show whether DF, RT, GR, etc.)

6633 Gr.

22. APPROX. DATE WORK WILL START*

June 1, 1980

23. PROPOSED CASING AND CEMENTING PROGRAM

SIZE OF HOLE	SIZE OF CASING	WEIGHT PER FOOT	SETTING DEPTH	QUANTITY OF CEMENT
9-7/8	7-5/8	20.0	250	160 sx.
6-3/4	2-7/8	6.5	3250	200 sx.

This well will be drilled and completed in the Pictured Cliffs formation. After the well is drilled, pipe is set and cemented, the casing will be perforated. The well will be sand water fraced to stimulate production. This slim hole completion will not have a tubing string.

IN ABOVE SPACE DESCRIBE PROPOSED PROGRAM: If proposal is to deepen or plug back, give data on present productive zone and proposed new productive zone. If proposal is to drill or deepen directionally, give pertinent data on subsurface locations and measured and true vertical depths. Give blowout preventer program, if any.

24.

SIGNED

Rudy D. Motto

TITLE

Area Superintendent

February 13, 1980

(This space for Federal or State office use)

PERMIT NO.

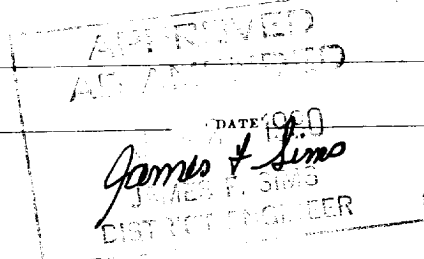
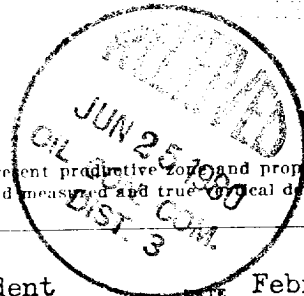
APPROVAL DATE

APPROVED BY

TITLE

CONDITIONS OF APPROVAL, IF ANY:

ok 3/28/80



All distances must be from the outer boundaries of the Section.

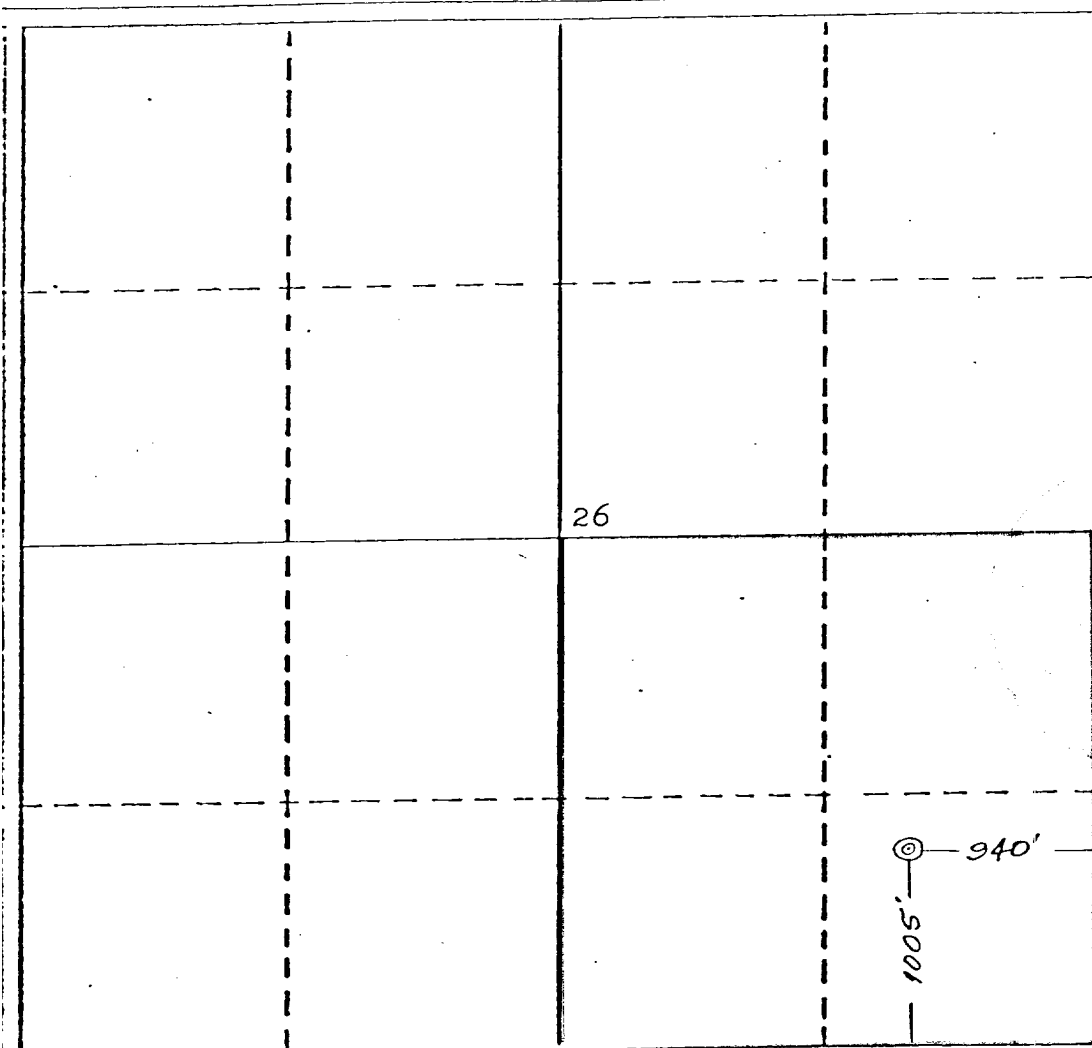
Operator SUPRON ENERGY CORPORATION			Lease JICARILLA "J"		Well No. 20
Unit Letter P	Section 26	Township 26 NORTH	Range 5 WEST	County RIO ARriba	
Actual Wellbore Location of Well: 1005 feet from the SOUTH line and 940 feet from the EAST line					
Ground Level Elev. 6633	Producing Formation PICTURED CLIFFS		Pool South Blanco PC TAPACITO		Dedicated Acreage 160 Acres

1. Outline the acreage dedicated to the subject well by colored pencil or hatchure marks on the plat below.
2. If more than one lease is dedicated to the well, outline each and identify the ownership thereof (both as to working interest and royalty).
3. If more than one lease of different ownership is dedicated to the well, have the interests of all owners been consolidated by communitization, unitization, force-pooling, etc?

☐ Yes ☐ No If answer is "yes," type of consolidation _____

If answer is "no," list the owners and tract descriptions which have actually been consolidated. (Use reverse side of this form if necessary.) _____

No allowable will be assigned to the well until all interests have been consolidated (by communitization, unitization, forced-pooling, or otherwise) or until a non-standard unit, eliminating such interests, has been approved by the Division.



CERTIFICATION

I hereby certify that the information contained herein is true and complete to the best of my knowledge and belief.

Rudy D. Motto

Name

Rudy D. Motto

Position

Area Superintendent

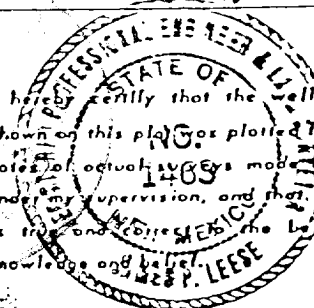
Company

Supron Energy Corporation

Date

February 14, 1980

I hereby certify that the well location shown on this plat was plotted from field notes of actual surveys made by me or under my supervision, and that the same is true and correct to the best of my knowledge and belief.



Date Surveyed

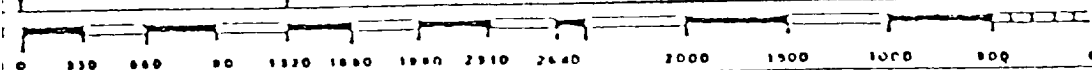
February 5, 1980

Registered Professional Engineer
and/or Land Surveyor

James P. Leese
James P. Leese

Certificate No.

1463



SUPRON ENERGY CORPORATION

JICARILLA "J" No. 20
SE ¼ Sec. 26, T-26N, R-5W, N.M.P.M.
Rio Arriba County, New Mexico

1. The Geologic name of the surface formation is, "Wasatch".
2. The estimated tops of important Geologic markers are:
 - A. Ojo Alamo 2624 ft.
 - B. Fruitland 2744 ft.
 - C. Pictured Cliffs 3069 ft.
3. The estimated depths at which anticipated water, oil or other mineral bearing formations are expected to be encountered are:
 - A. Ojo Alamo 2624 ft. Water
 - B. Fruitland 2744 ft. Water
 - C. Pictured Cliffs 3069 ft. Gas
4. The casing program is shown on form 9-331C and all casing is new.
5. The lessee's pressure control equipment schematics are attached, along with minimum specifications, testing procedures, and frequencies.
6. The type, estimated volumes, and characteristics of the circulating medium are as follows:
 - A. 0 - 250 ft. Natural Mud
 - B. 250 - 3250 ft. Permaloid non dispersed mud containing approx. 90 sx gel, 35 sx of permaloid and 10 sx CMC.
7. The auxiliary equipment to be used will be floats at the bit and a sub on the floor with a full opening valve to be stabbed into the drill pipe when the kelly is not in the string.
8. The well is in an area which is highly developed; therefore we will not have a testing and coring program. The logging program is as follows:
 - A. E.S. Induction
 - B. Gamma Ray Density
 - C. Gamma Ray Correlation
 - D. Cement Bond Log
9. We do not expect to find any abnormal pressures, temperatures or hydrogen sulfide problems in this highly developed area.
10. The anticipated starting date for this well is June 1, 1980

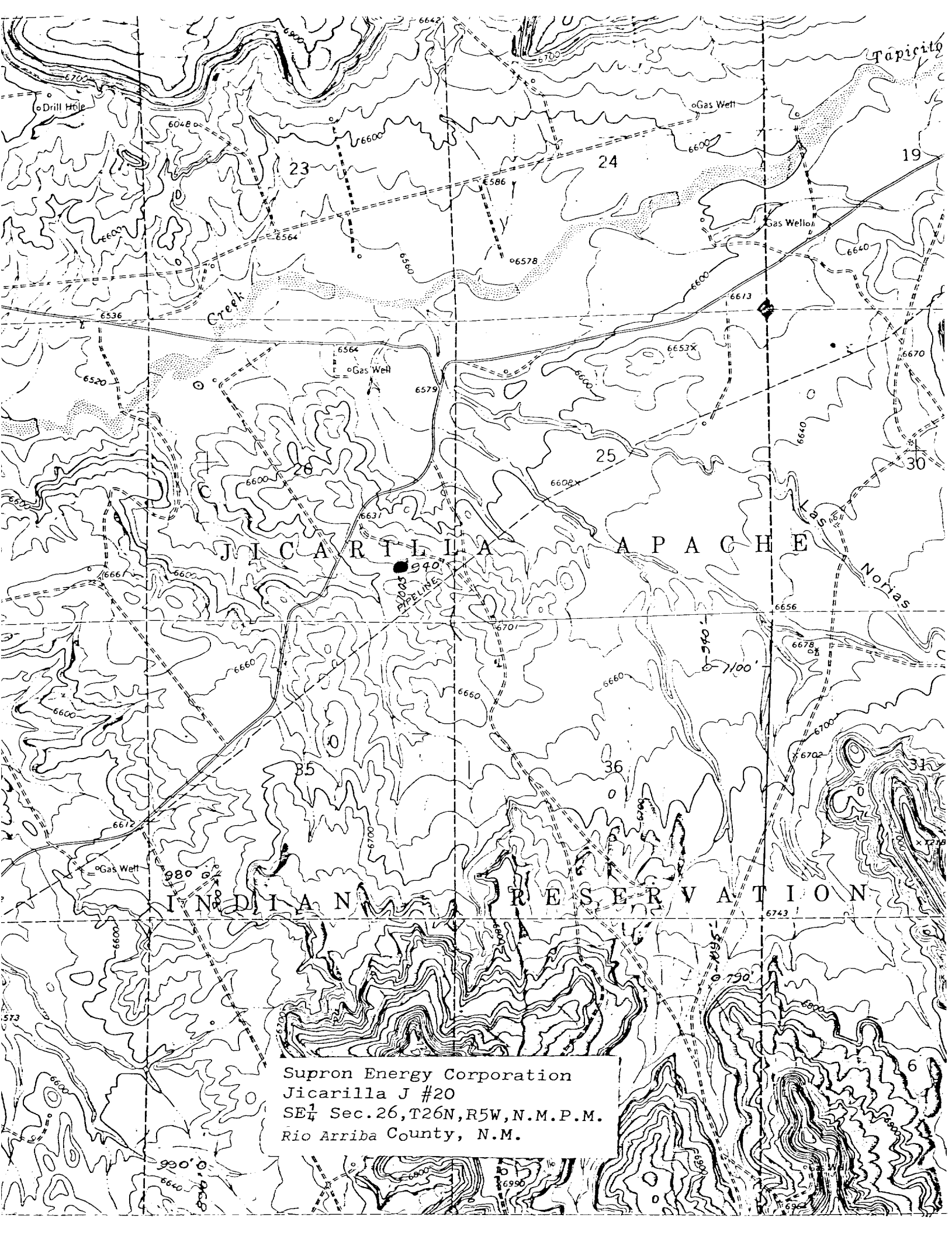
SUPRON ENERGY CORPORATION

JICARILLA "J" NO. 20

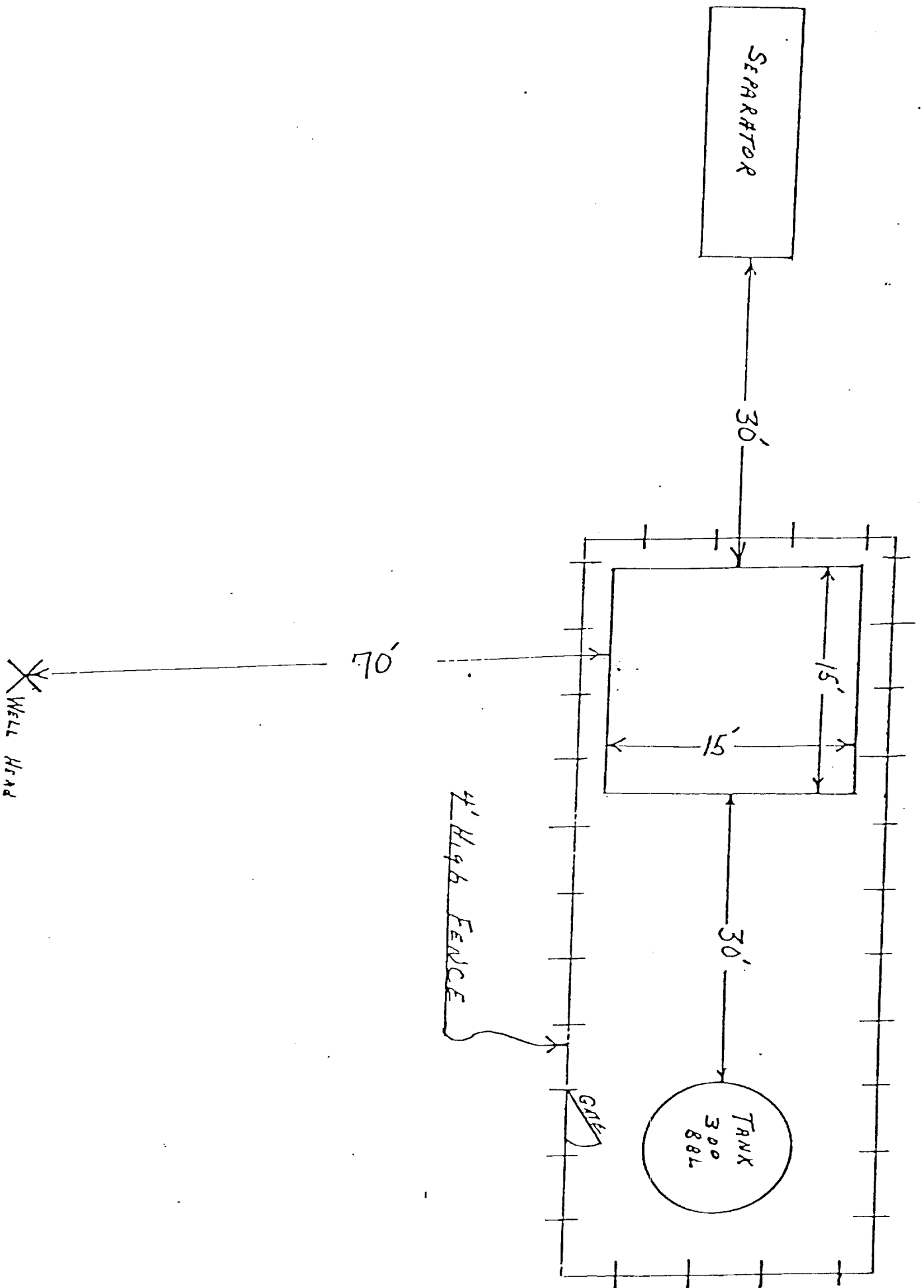
SE/4 Sec. 26, T-26N, R-5W, N.M.P.M.
Rio Arriba County, New Mexico

The following attachments are included with this application:

1. Topographical map showing proposed location and access road.
2. Access road not required.
3. Map showing existing producing facilities.
4. Location of surface equipment if required.
5. Drilling and completion water will be obtained from the Jicarilla "J" Water well.
6. All pits will be fenced and constructed in such a way as to prevent litter on the location.
7. We will dispose of all waste by placing it in the reserve pit and burying it when the well is completed.
8. There will be no camp at or near the well site.
9. There will be no air strip.
10. A plat is attached showing the location of the rig, mud tanks, reserve pit, burn pit, etc.
11. A letter of certification is attached. The operator representative for compliance purposes is Rudy D. Motto, Area Superintendent, P.O. Box 808, Farmington, New Mexico 87401. Phone (505) 325-3587.
12. After the well is completed, the location will be cleaned up, and bladed. The reserve pit will be allowed to dry and then filled and restored to its natural state.
13. The soil is sandy clayey loam, the principal vegetation is sagebrush, snakeweed, pinon, juniper, phlox, prickly pear, ground lichen, three-awn, brome, grama, galleta.

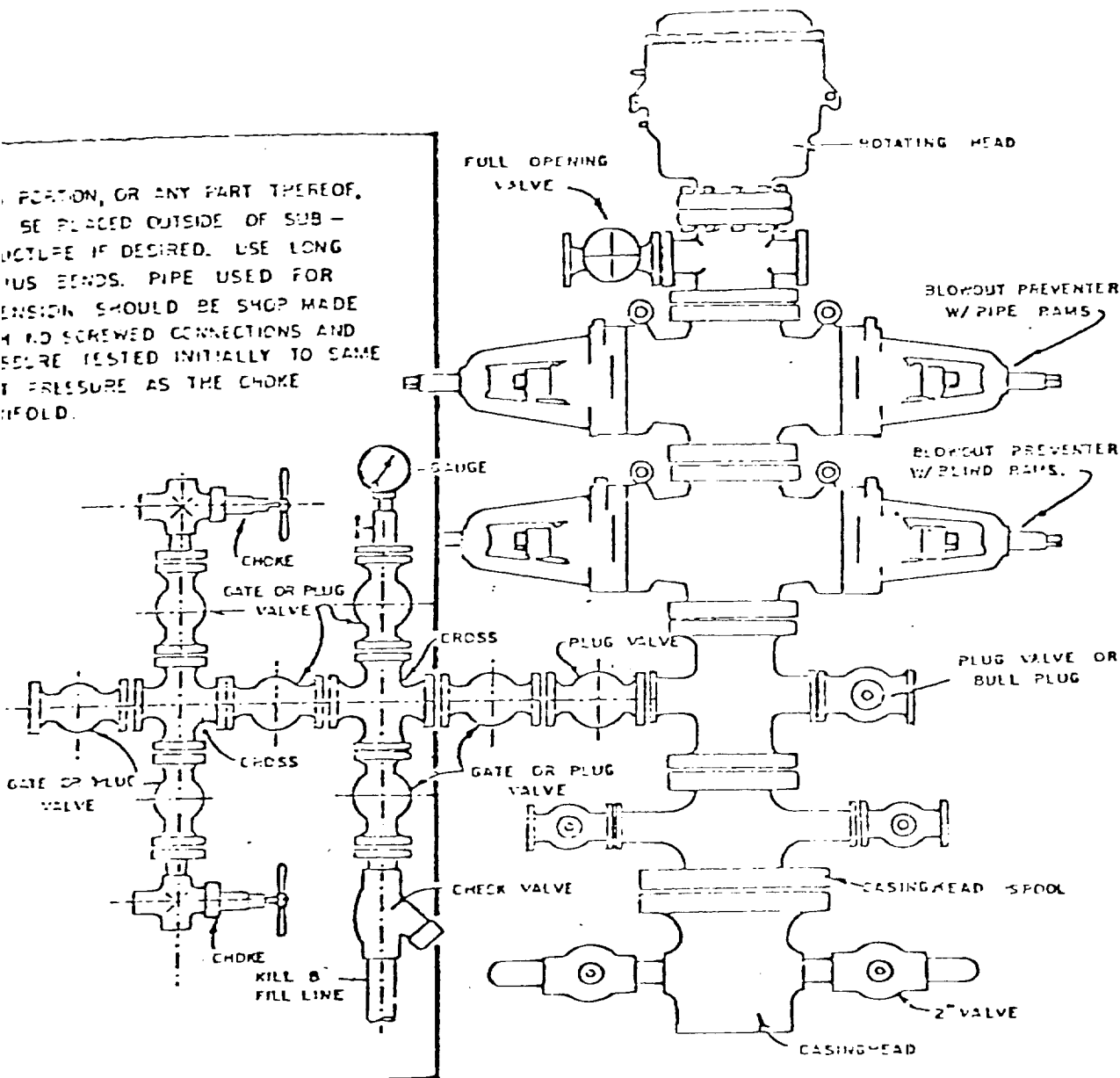


Supron Energy Corporation
Jicarilla J #20
SE $\frac{1}{4}$ Sec. 26, T26N, R5W, N.M.P.M.
Rio Arriba County, N.M.



Blowout Preventer will be tested daily and prior to drilling out with the results to be logged on the drillers report.

The B.O.P. and all valve and fittings are rated at 3000 psi working pressure, and hydraulically operated



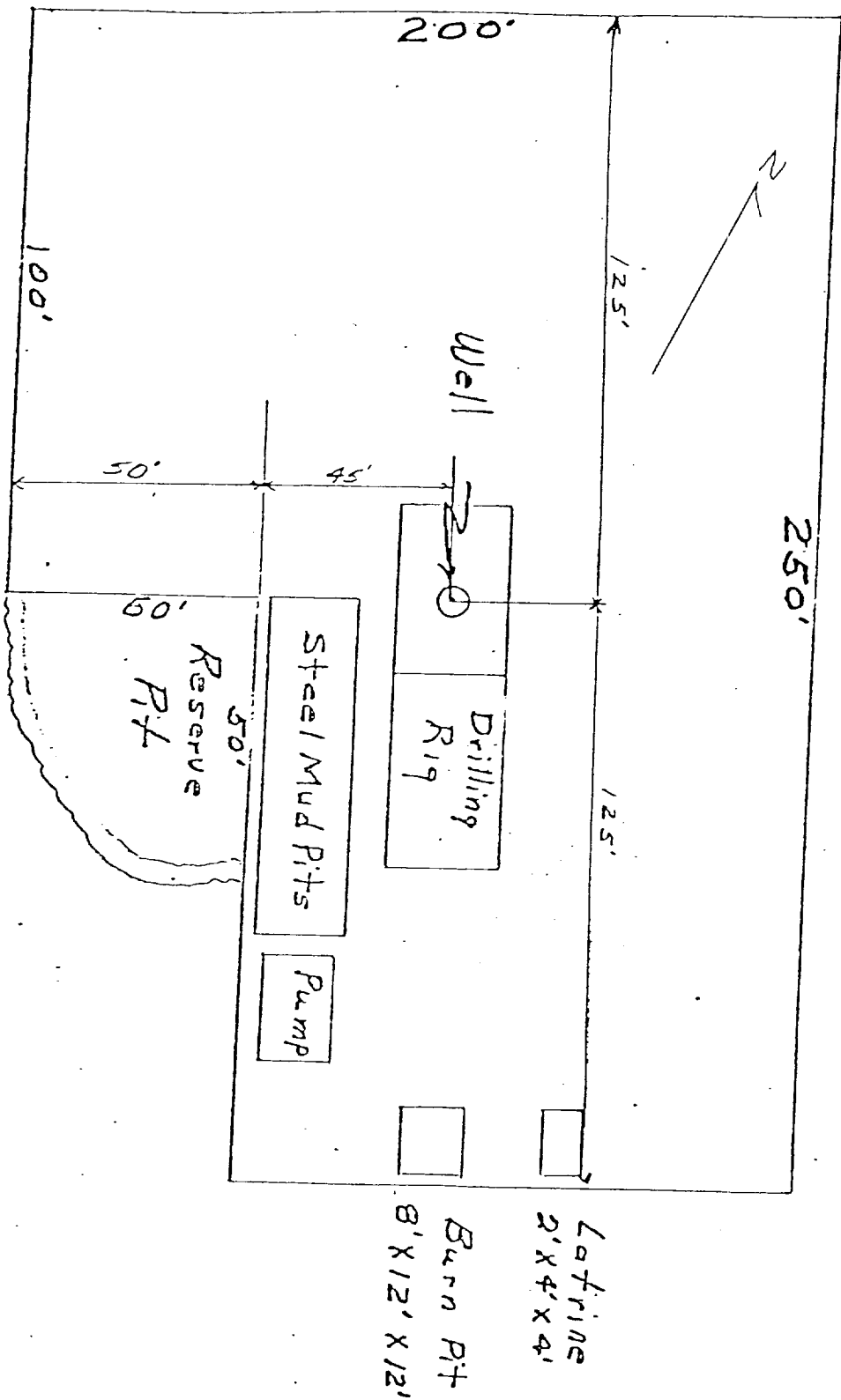
BLOWOUT PREVENTER HOOKUP

LOCATION AND EQUIPMENT LAYOUT

SUPRON ENERGY CORPORATION

Jicarilla "J" No. 20

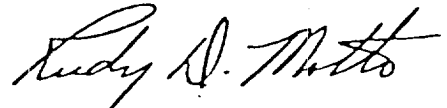
1005 feet from the South line and 940 feet from the East line of Section 26, Township 26 North, Range 5 West, N.M.P.M. Rio Arriba County, New Mexico.



SUPRON ENERGY CORPORATION
Post Office Box 808
FARMINGTON, NEW MEXICO 87401

I hereby certify that I, or persons under my direct supervision, have inspected the proposed drillsite and access route; that I am familiar with the conditions which presently exist; that the statements made in this plan are, to the best of my knowledge, true and correct; and, that the work associated with the operations proposed herein will be performed by SUPRON ENERGY CORPORATION and its contractors subcontractors in conformity with this plan and the terms and conditions under which it is approved.

SUPRON ENERGY CORPORATION

A handwritten signature in cursive script, reading "Rudy D. Motto".

Rudy D. Motto
Area Superintendent
Phone: 325-3587