

UNITED STATES
DEPARTMENT OF THE INTERIOR
GEOLOGICAL SURVEY

APPLICATION FOR PERMIT TO DRILL, DEEPEN, OR PLUG BACK

1a. TYPE OF WORK

DRILL ☒DEEPEN ☐PLUG BACK ☐

b. TYPE OF WELL

OIL
WELL ☐GAS
WELL ☒

OTHER

SINGLE
ZONE ☒MULTIPLE
ZONE ☐

2. NAME OF OPERATOR

Supron Energy Corporation

3. ADDRESS OF OPERATOR

P.O. Box 808, Farmington, New Mexico 87401

4. LOCATION OF WELL (Report location clearly and in accordance with any State requirements.)

At surface

1800 Ft./North line and 630 Ft./West line

At proposed prod. zone

Same as above

14. DISTANCE IN MILES AND DIRECTION FROM NEAREST TOWN OR POST OFFICE*

20 Northwest Lindrith, New Mexico

15. DISTANCE FROM PROPOSED*

630 Ft.

LOCATION TO NEAREST

PROPERTY OR LEASE LINE, FT.

(Also to nearest drlg. unit line, if any)

630 Ft.

18. DISTANCE FROM PROPOSED LOCATION*

TO NEAREST WELL, DRILLING, COMPLETED,
OR APPLIED FOR, ON THIS LEASE, FT.

1330

16. NO. OF ACRES IN LEASE

2560

19. PROPOSED DEPTH

8340

17. NO. OF ACRES ASSIGNED

TO THIS WELL

W/320 W/2

20. ROTARY OR CABLE TOOLS

Rotary

21. ELEVATIONS (Show whether DF, RT, GR, etc.)

7256 GR

22. APPROX. DATE WORK WILL START*

September 1, 1980

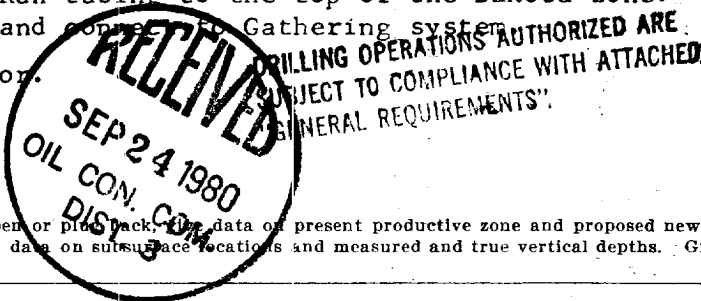
23.

PROPOSED CASING AND CEMENTING PROGRAM

SIZE OF HOLE	SIZE OF CASING	WEIGHT PER FOOT	SETTING DEPTH	QUANTITY OF CEMENT
13-3/4	9-5/8"	32.3	300'	Circ.
8-3/4	7"	23	4050'	175 sx. H-L +6%w/12-1/2# Gil. & 50 sx. class "B" T.C. - 2000'
6-1/4	4-1/2"	10.5 & 11.6	8040	500 Sx. 50-50 poz w/4% gel & 0.6% F.L.A.

Drill 13-3/4" surface hole to approx. 300 ft. Run 9-5/8" surface pipe. Cmt. pipe and circulate cmt. to the surface. Pressure test surface pipe. Drill 8-3/4" hole to intermediate T.D. of approx. 4050 ft. Run 7" casing and cmt. Test Intermediate casing. Drill 6-1/4" hole with gas or air to T.D. of approximately 8340 ft. Run pipe and hang with a liner hanger. Top of liner hanger at approx. 3900 ft. Cmt. liner. Pressure test pipe string. Perforate and fracture the Dakota zone clean well up. Run tubing to the top of the Dakota zone. Shut well in and nipple down well head. Test well and connect to Gathering system.

This gas has been previously contracted for.



IN ABOVE SPACE DESCRIBE PROPOSED PROGRAM: If proposal is to deepen or plug back, give data on present productive zone and proposed new productive zone. If proposal is to drill or deepen directionally, give pertinent data on subsurface locations and measured and true vertical depths. Give blowout preventer program, if any.

24.

SIGNED

Rudy D. Motro

TITLE

Area Superintendent

DATE

July 10, 1980

(This space for Federal or State office use)

PERMIT NO.

APPROVAL DATE

APPROVED BY

TITLE

DATE

CONDITIONS OF APPROVAL, IF ANY:

NMOCG

All distances must be from the outer boundaries of the Section.

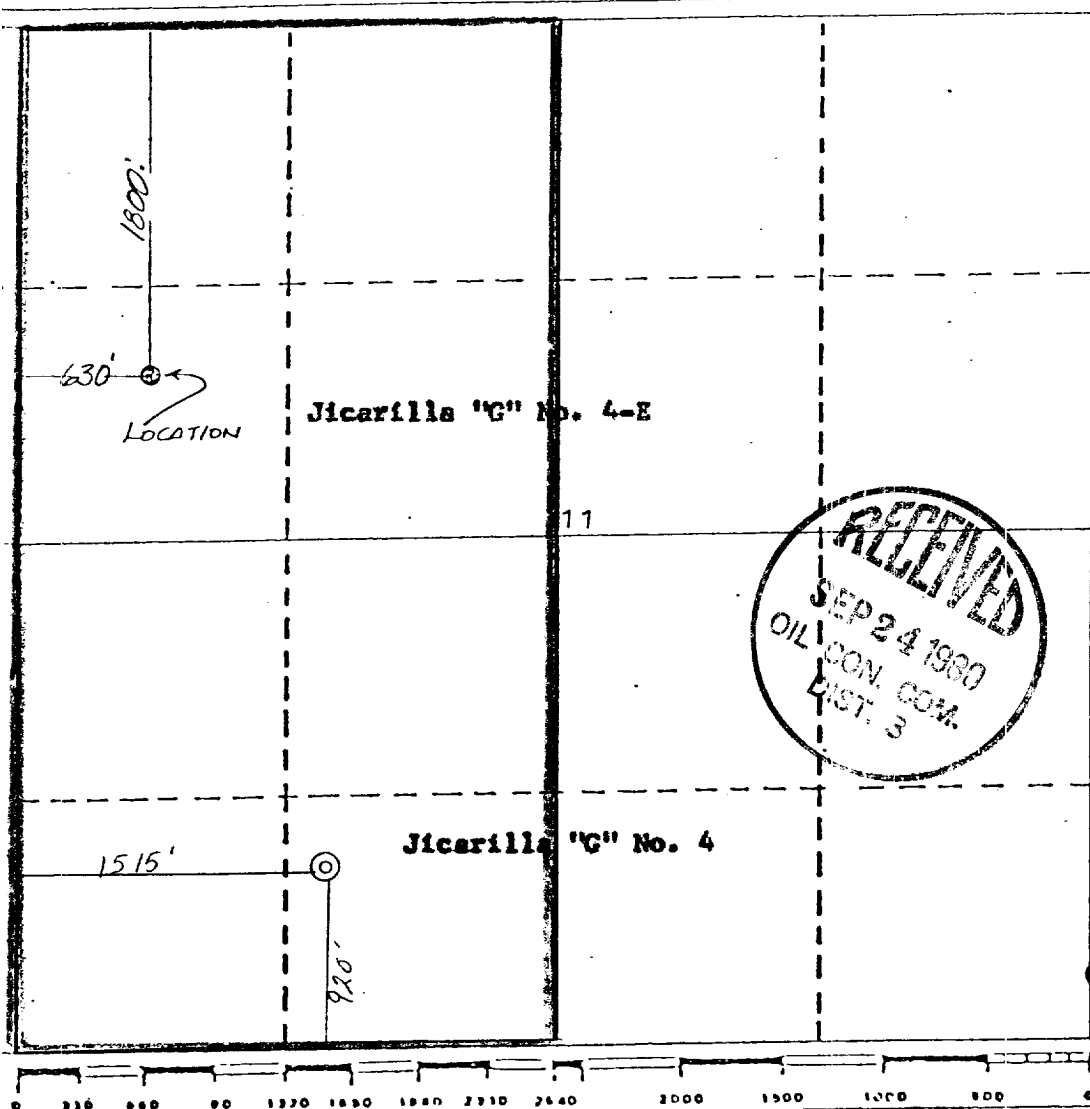
Operator SUPRON ENERGY CORPORATION		Lease JICARILLA G		Well No. #4-E
Unit Letter E	Section 11	Township 26 NORTH	Range 5 WEST	County RIO ARriba
Actual Footage Location of Wells: 1800 feet from the NORTH line and 630 feet from the WEST line				
Ground Level Elev. 7256	Producing Formation DAKOTA	Pool BASIN	Dedicated Acreage: W/2 320 Acres	

1. Outline the acreage dedicated to the subject well by colored pencil or hatchure marks on the plat below.
2. If more than one lease is dedicated to the well, outline each and identify the ownership thereof (both as to working interest and royalty).
3. If more than one lease of different ownership is dedicated to the well, have the interests of all owners been consolidated by communitization, unitization, force-pooling, etc?

☐ Yes ☐ No If answer is "yes," type of consolidation _____

If answer is "no," list the owners and tract descriptions which have actually been consolidated. (Use reverse side of this form if necessary.) _____

No allowable will be assigned to the well until all interests have been consolidated (by communitization, unitization, forced-pooling, or otherwise) or until a non-standard unit, eliminating such interests, has been approved by the Division.



CERTIFICATION

I hereby certify that the information contained herein is true and complete to the best of my knowledge and belief.

Kenneth E. Roddy
Name

Kenneth E. Roddy

Position

Production Superintendent

Company

SUPRON ENERGY CORPORATION

Date

June 23, 1980

I hereby certify that the location shown on this plat was plotted from field notes and actual surveys made by me or under my supervision and that the same is true and correct to the best of my knowledge and belief.

James P. Leese
Professional Engineer
STATE OF NEW MEXICO
NO. 1463
JAMES P. LEESE

Date Surveyed

May 9, 1980

Registered Professional Engineer and/or Land Surveyor

James P. Leese
James P. Leese

Certificate No.

1463

SUPRON ENERGY CORPORATION

JICARILLA "G" NO. 4-E
NW/4 Sec. 11, T-26N, R-5W, N.M.P.M.
Rio Arriba County, New Mexico

1. The geologic name of the surface formation is "Wasatch".
2. The estimated tops of important geologic markers are:

A. Top of the Ojo Alamo	2493 Ft.
B. Top of the Fruitland	3427 Ft.
C. Top of the Pictured Cliffs	3897 Ft.
D. Top of the Mesaverde	5562 Ft.
E. Top of the Gallup	7602 Ft.
F. Top of the Dakota	8102 Ft.
3. The estimated depths at which water, oil or mineral bearing formations are expected to be encountered are:

A. Top of the Ojo Alamo	2493 Ft.	Water
B. Top of the Fruitland	3427 Ft.	Water
C. Top of the Pictured Cliffs	3897 Ft.	Water
D. Top of the Mesaverde	5562 Ft.	Water
E. Top of the Gallup	7602 Ft.	Dry
F. Top of the Dakota	8102 Ft.	Gas
4. The casing program is shown on Form 9-331C and all casing is new.
5. The lessee's pressure control equipment schematics are attached, along with minimum specifications, testing procedures and frequencies.
6. The type, estimated volumes and characteristics of the circulating medium are as follows:

A. 0 - 300 feet	- Natural mud.
B. 300 to 8340 feet	- Permaloid, non dispersed mud containing approximately 200 sx of gel, 80 sx. of permaloid and 20 sx. of C.M.C.
7. The auxiliary equipment to be used will be floats at the bit and a sub on the floor with a full opening valve to be stabbed into the drill pipe when the kelly is not in the string.
8. The well is in an area which is heavily developed therefore we will not have a testing or coring program. The logging program is as follows:

A. E.S. Induction
B. Gamma Ray Density
C. Gamma Ray Correlation
D. Cement Bond
9. We do not expect to find any abnormal pressures, temperatures or hydrogen sulfide problems in this highly developed area.
10. The anticipated starting date of this well is September 1, 1980, dependent on rig availability.

SUPRON ENERGY CORPORATION

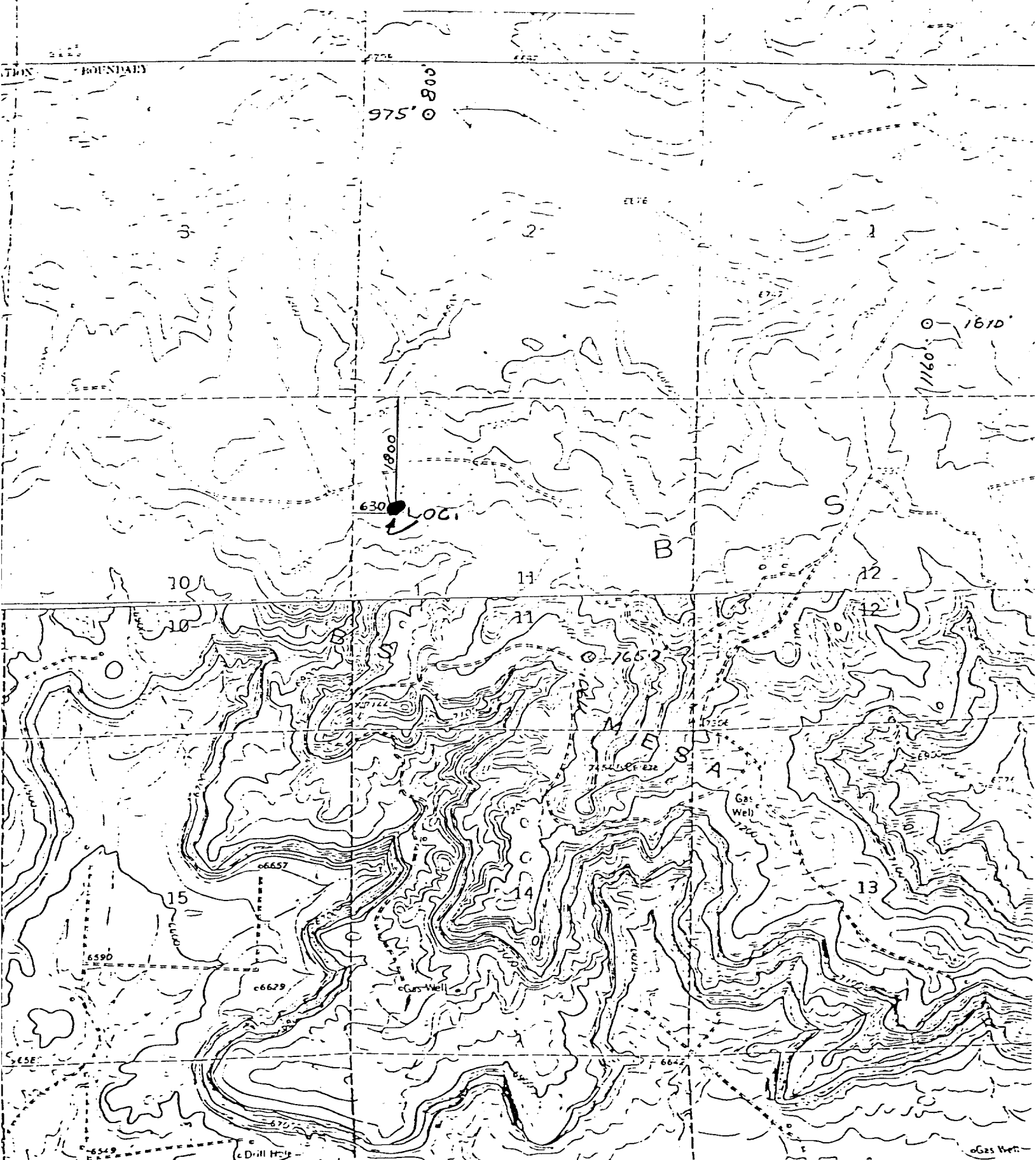
JICARILLA "G" NO. 4-E

NW/4 Sec. 11, T-26N, R-5W, N.M.P.M.
Rio Arriba County, New Mexico

The following attachments are included with this application:

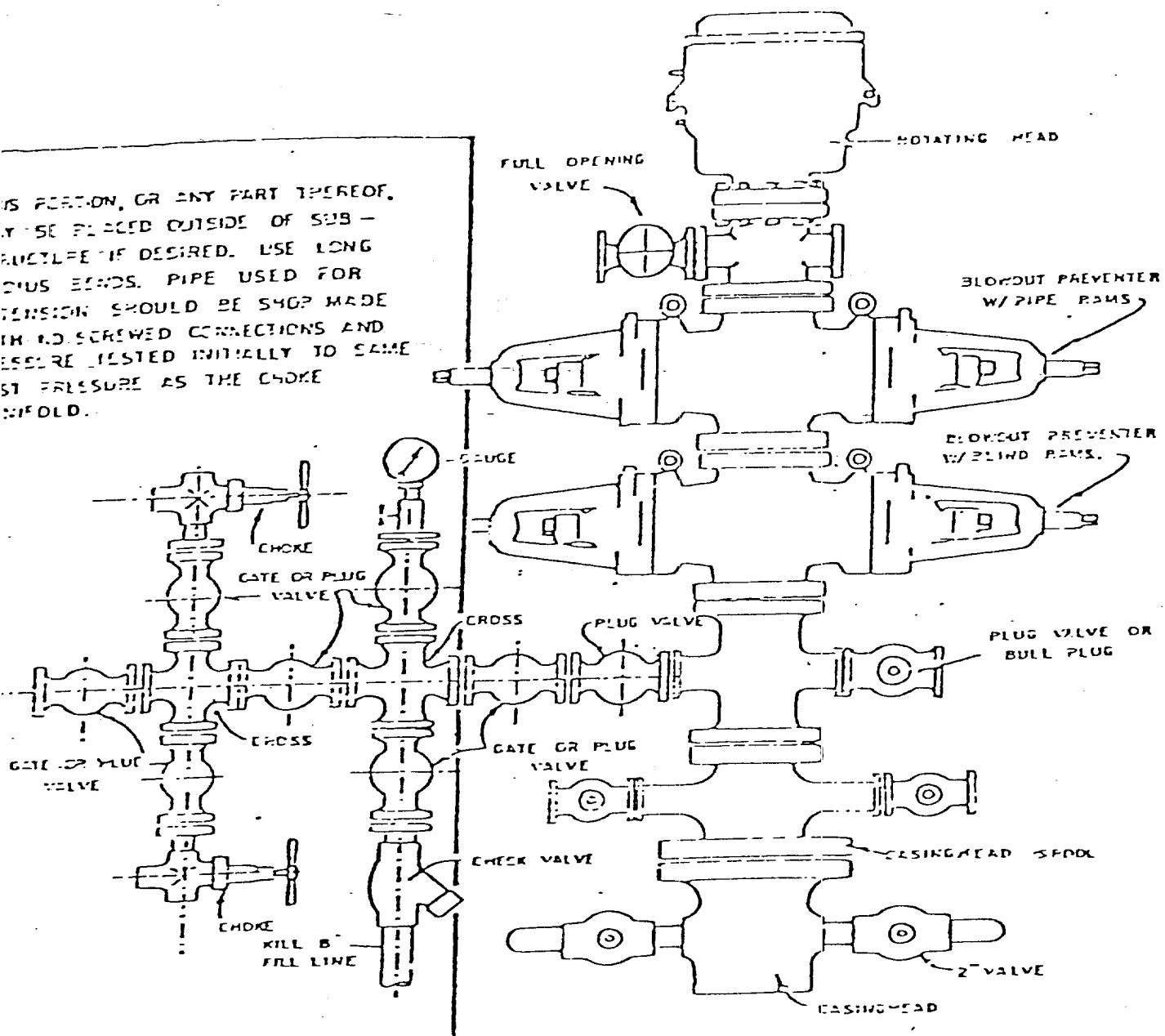
1. Topographical map showing proposed location and access arod.
2. Planned access road is approximately 600 feet long.
3. Map showing existing producing facilities.
4. Location of surface equipment if required.
5. Drilling and completion water will be obtained from the Jicarilla "J" Water well.
6. All pits will be fenced and constructed in such a way as to prevent litter on the location.
7. We will dispose of all waste by placing it in the reserve pit and burying it when the well is completed.
8. There will be no camp at or near the well site.
9. There will be no air strip.
10. A plat is attached showing the location of the rig, mud tanks, reserve pit, burn pit, etc.
11. A letter of certification is attached. The operator representative for compliance purposes is Rudy D. Motto, Area Superintendent, P.O. Box 808, Farmington, New Mexico 87401. Phone (505) 325-3587.
12. After the well is completed, the location will be cleaned up, and bladed. The reserve pit will be allowed to dry and then filled and restored to its natural state.
13. The soil is sandy clayey loam and the principal vegeation is pinon, juniper, mountain mahogany, scrub oak, bitterbrush, serviceberry, narrowleaf yucca, broadleaf yucca, prickly pear, indian ricegrass.

Supron Energy Corporation
 Jicarilla G #4-E
 NW $\frac{1}{4}$ Sec 11, T26N, R5W, N.M.P.M.
 Rio Arriba Co., New Mexico

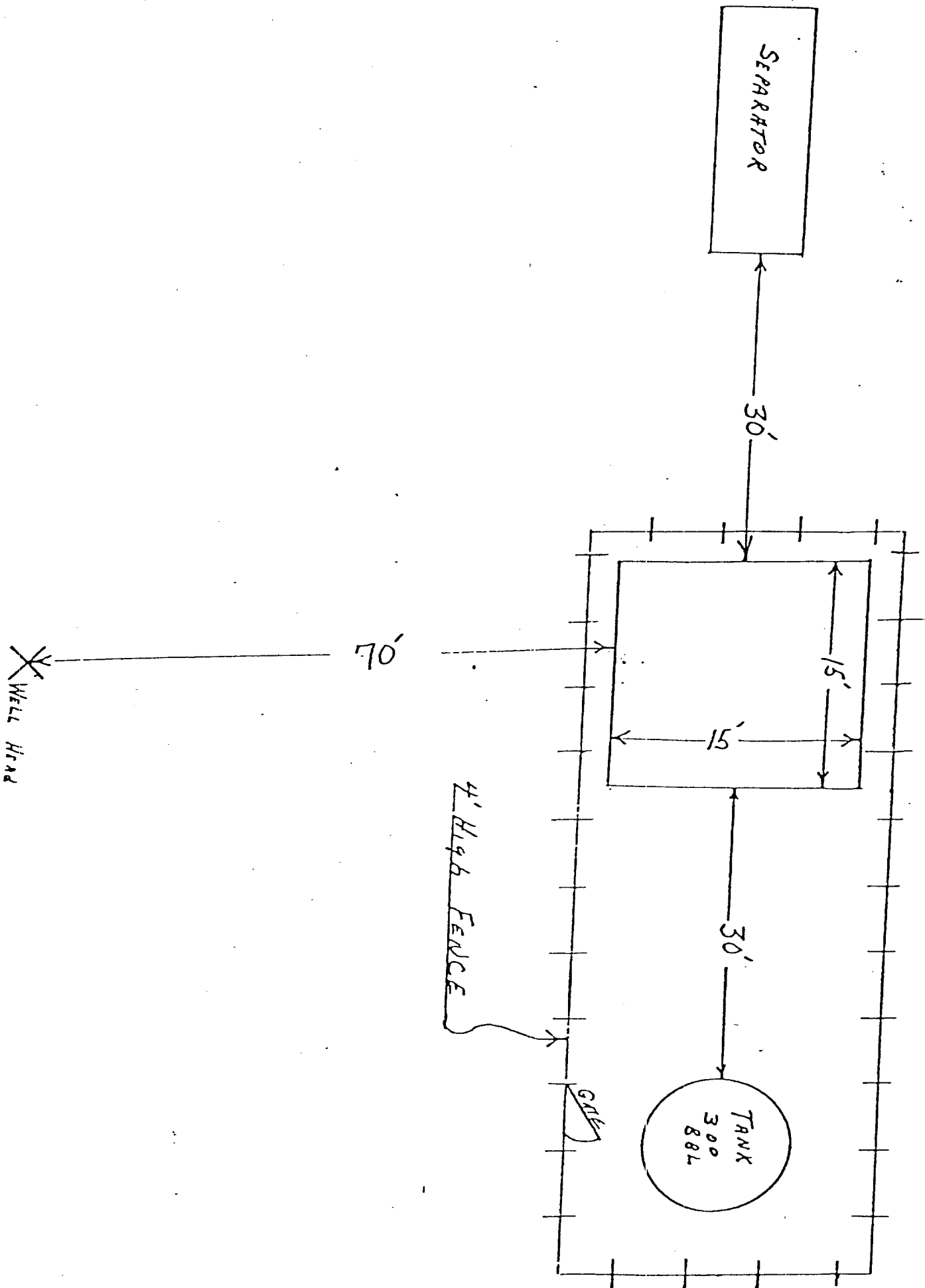


Blowout Preventer will be tested daily and prior to drilling out with the results to be logged on the drillers report.

The B.O.P. and all valve and fittings are rated at 3000 psi working pressure, and hydraulically operated



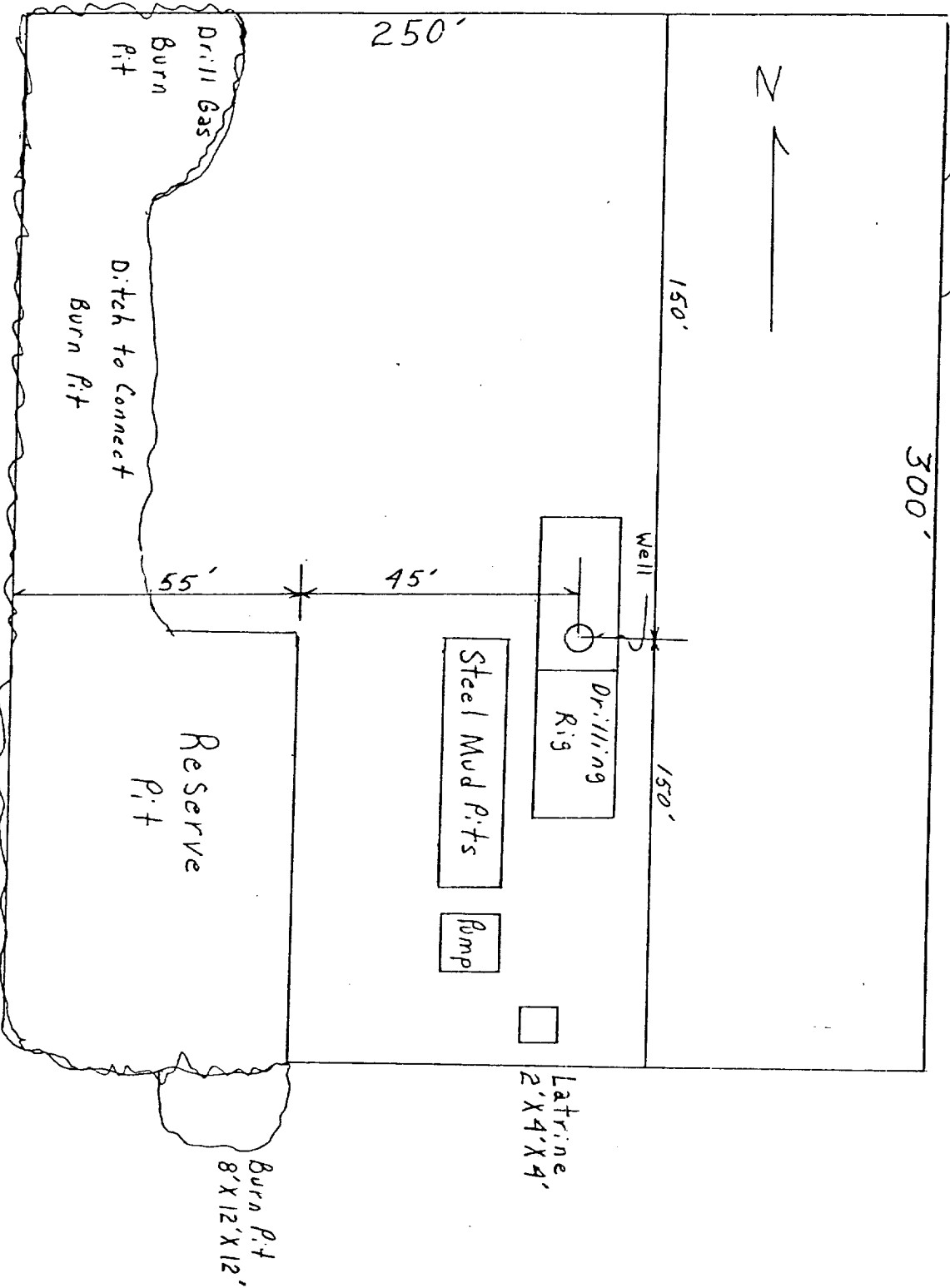
BLOWOUT PREVENTER HOOKUP



LOCATION AND EQUIPMENT LAYOUT

JICARILLA "C" NO. 4-E
1800' N; 630' W Line
Sec. 11, Twp. 26N, Rge. 5W
Rio Arriba County, New Mexico

600 Ft. Road



SUPRON ENERGY CORPORATION

Post Office Box 808

FARMINGTON, NEW MEXICO 87401

I hereby certify that I, or persons under my direct supervision, have inspected the proposed drillsite and access route; that I am familiar with the conditions which presently exist; that the statements made in this plan are, to the best of my knowledge, true and correct; and, that the work associated with the operations proposed herein will be performed by SUPRON ENERGY CORPORATION and its contractors subcontractors in conformity with this plan and the terms and conditions under which it is approved.

SUPRON ENERGY CORPORATION

A handwritten signature in cursive script, reading "Rudy D. Motto".

Rudy D. Motto
Area Superintendent
Phone: 325-3587