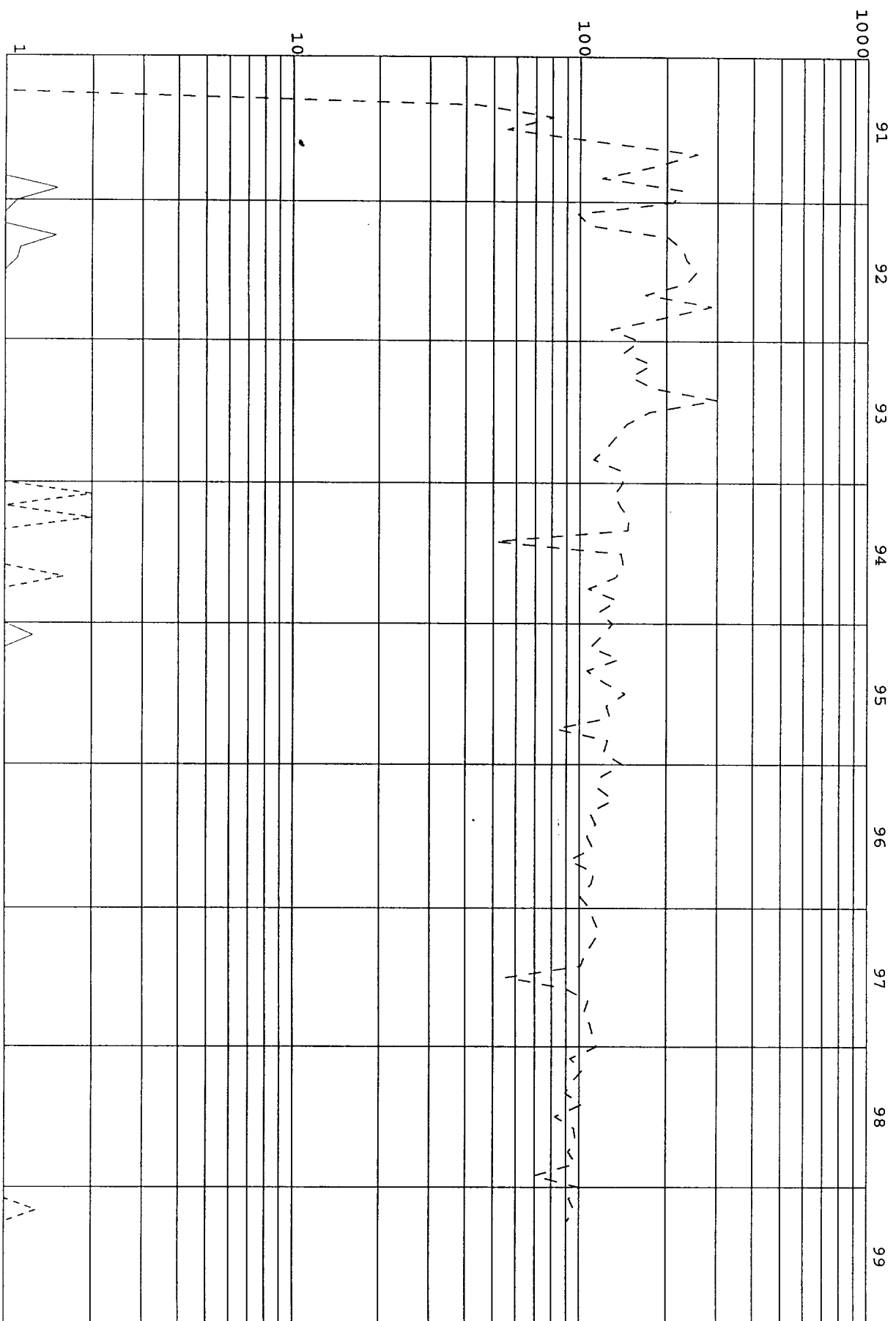


1000 Rio Brazos Rd., Aztec, NM 87410

X YES NO

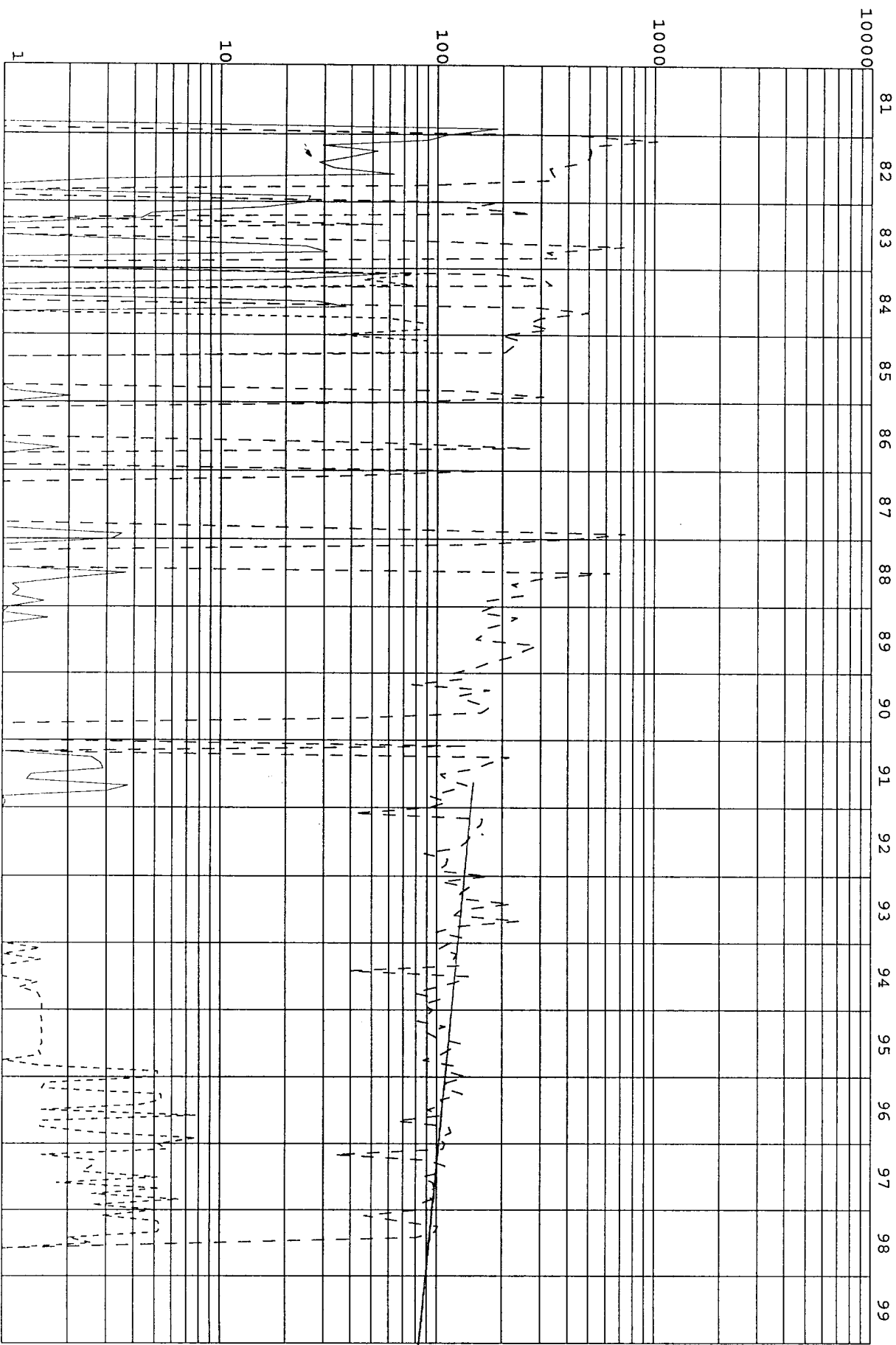
325-4397

LEASE NAME: WILLIAMS, PAUL
TEX WELL NO: 3E
CURR_LSE_NO: 017725
RSVR: REG_FLD: MV
72319



D
A
I
L
Y
R
A
T
E

LEASE NAME: WILLIAMS, PAUL
TEX WELL_NO: 3E
CURR_LSE_NO: 017725
RSVR: DAKOTA
REG_FLD: 71599



D
A
I
L
Y
R
A
T
E

BOPD --- MCFPD --- BWPD --- BWIPD --- AVG INJ PRES / 1
CURRENT CUMS: OIL: 30,479 bbl GAS: 836,619 mcf WTR: 27,593 bbl WINJ: 0 bbl

DISTRICT I
P.O. Box 1980, Hobbs, NM 88241-1980
DISTRICT II
P.O. Box Drawer DD, Artesia, NM 88211-0719
DISTRICT III
1000 Rio Brazos Rd., Aztec, NM 87410
DISTRICT IV
P.O. Box 2088, Santa Fe, NM 87504-2088

State of New Mexico
Energy, Minerals and Natural Resources Department
OIL CONSERVATION DIVISION
P.O. Box 2088
Santa Fe, New Mexico 87504-2088

Form C-102
Revised February 10, 1999
Instructions on back
Submit to Appropriate District Office
State Lease - 4 Copie
Fee Lease - 3 Copie
☐ AMENDED REPORT

WELL LOCATION AND ACREAGE DEDICATION PLAT

¹ API Number 3003922610	² Pool Code 71599	³ Pool Name BASIN DAKOTA (PRORATED GAS)
⁴ Property Code	⁵ Property Name PAUL WILLIAMS	⁶ Well No. 3E
⁷ OGRID Number 131994	⁸ Operator Name FOUR STAR OIL AND GAS COMPANY	⁹ Elevation 6679'

¹⁰ Surface Location

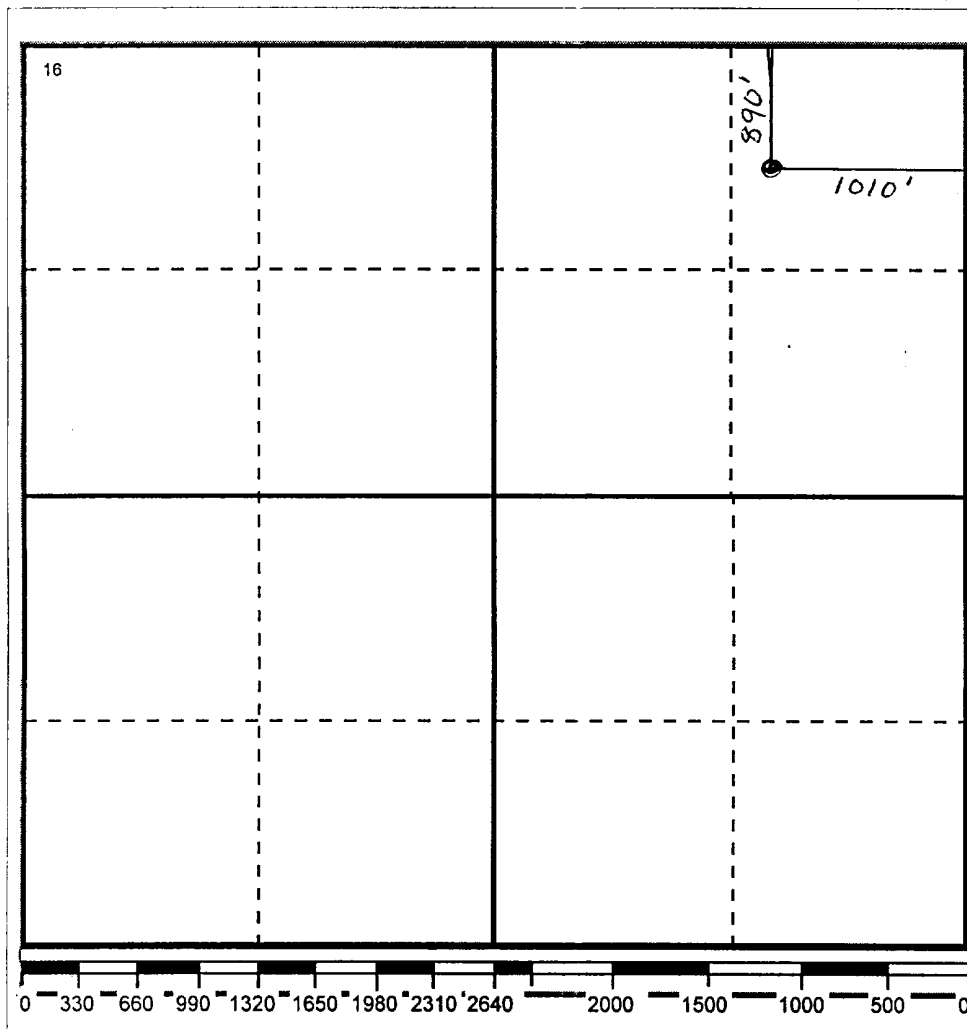
Ul or lot no	Section	Township	Range	Lot.Idn	Feet From The	North/South Line	Feet From The	East/West Line	County
A	35	T26N	R06W		890	NORTH	1010	EAST	RIO ARRIBA

¹¹ Bottom Hole Location If Different From Surface

Ul or lot no.	Section	Township	Range	Lot.Idn	Feet From The	North/South Line	Feet From The	East/West Line	County

¹² Dedicated Acre	¹³ Joint or Infill No	¹⁴ Consolidation Code	¹⁵ Order No.
------------------------------	-------------------------------------	----------------------------------	-------------------------

NO ALLOWABLE WILL BE ASSIGNED TO THIS COMPLETION UNTIL ALL INTERESTS HAVE BEEN CONSOLIDATED
OR A NON-STANDARD UNIT HAS BEEN APPROVED BY THE DIVISION



17 OPERATOR CERTIFICATION

I hereby certify that the information
contained herein is true and complete to the
best of my knowledge and belief

Signature

Printed Name

Rached Hindi

Positio

Senior Engineer

Date

7/30/99

18 SURVEYOR CERTIFICATION

I hereby certify that the well location shown
on this plat was plotted from field notes of
actual surveys made by me or under my
supervision, and that the same is true and
correct to the best of my knowledge and
belief.

Date Surveyed

Signature & Seal of
Professional Surveyor

Certificate No.

DISTRICT I

P.O. Box 1980, Hobbs, NM 88241-1980

DISTRICT II

P.O. Box Drawer DD, Artesia, NM 88211-0719

DISTRICT III

1000 Rio Brazos Rd., Aztec, NM 87410

DISTRICT IV

P.O. Box 2088, Santa Fe, NM 87504-2088

State of New Mexico
Energy, Minerals and Natural Resources Department

OIL CONSERVATION DIVISION

P.O. Box 2088
 Santa Fe, New Mexico 87504-2088

Form C-102

Revised February 10, 1999

Instructions on back

Submit to Appropriate District Office

State Lease - 4 Copie

Fee Lease - 3 Copie

☐ AMENDED REPORT**WELL LOCATION AND ACREAGE DEDICATION PLAT**

¹ API Number 3003922610	² Pool Code 72319	³ Pool Name BLANCO MESAVERDE (PRORATED GAS)
⁴ Property Code	⁵ Property Name PAUL WILLIAMS	⁶ Well No. 3E
⁷ OGRID Number 022364	⁸ Operator Name TEXACO EXPLORATION & PRODUCTION, INC.	⁹ Elevation 6679'

¹⁰ Surface Location

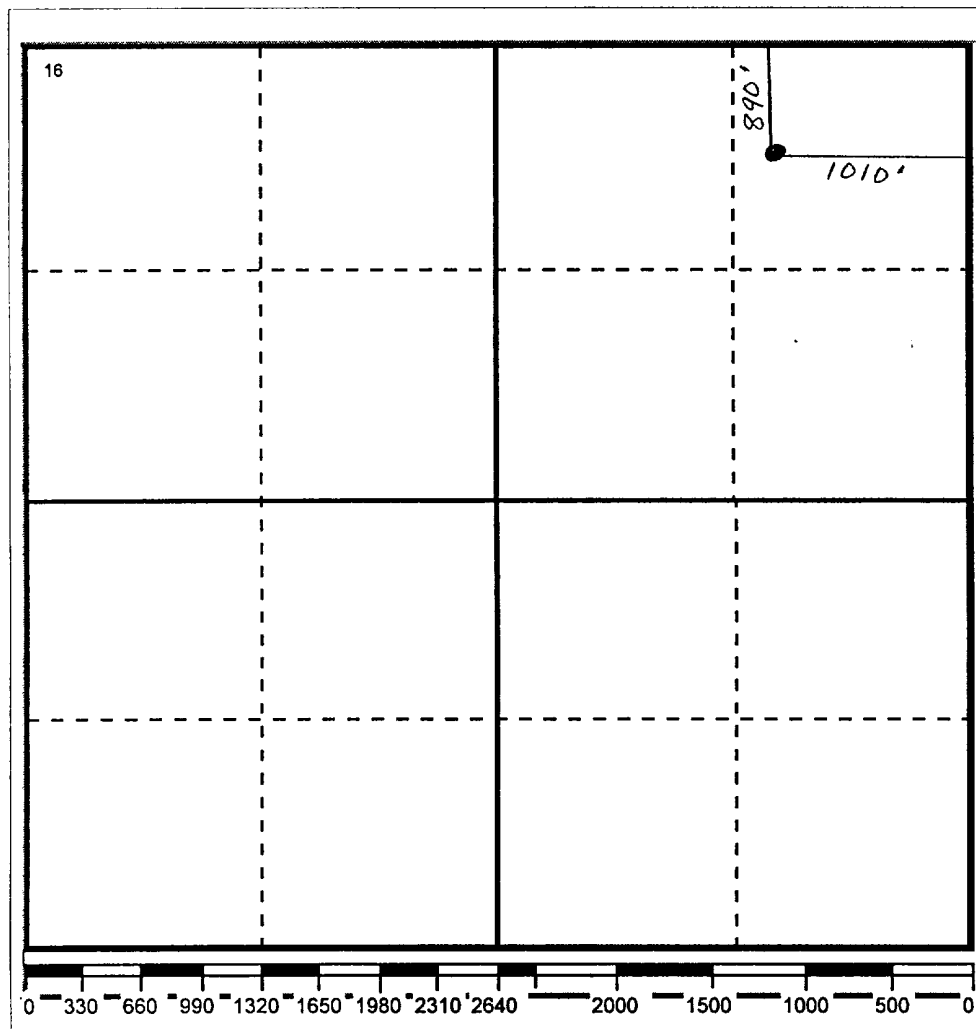
UI or lot no	Section	Township	Range	Lot.Idn	Feet From The	North/South Line	Feet From The	East/West Line	County
A	35	T26N	R06W		890	NORTH	1010	EAST	RIO ARRIBA

¹¹ Bottom Hole Location If Different From Surface

UI or lot no.	Section	Township	Range	Lot.Idn	Feet From The	North/South Line	Feet From The	East/West Line	County

¹² Dedicated Acre	¹³ Joint or Infill No	¹⁴ Consolidation Code	¹⁵ Order No.
------------------------------	-------------------------------------	----------------------------------	-------------------------

NO ALLOWABLE WILL BE ASSIGNED TO THIS COMPLETION UNTIL ALL INTERESTS HAVE BEEN CONSOLIDATED
 OR A NON-STANDARD UNIT HAS BEEN APPROVED BY THE DIVISION

**17 OPERATOR CERTIFICATION**

I hereby certify that the information
 contained herein is true and complete to the
 best of my knowledge and belief

Signature

Printed Name

Rached Hindi

Positio

Senior Engineer

Date

7/30/99

18 SURVEYOR CERTIFICATION

I hereby certify that the well location shown
 on this plat was plotted from field notes of
 actual surveys made by me or under my
 supervision, and that the same is true and
 correct to the best of my knowledge and
 belief.

Date Surveyed

 Signature & Seal of
 Professional Surveyor

Certificate No.



PAUL WILLIAMS No. 3E

PROPOSED COMPLETION

WELL:
PAUL WILLIAMS No. 3E
LOCATION:
NE/E
SEC 35 T26N R6W

SURFACE CASING
CIRC CMT
8 5/8" CSG IN 12 1/4" HOLE
@ 313' W/ 300 SX CMT

CASING CEMENTED W/
630 SX 1 st STAGE
750 SX 2 nd STAGE
750 SX 3 rd STAGE

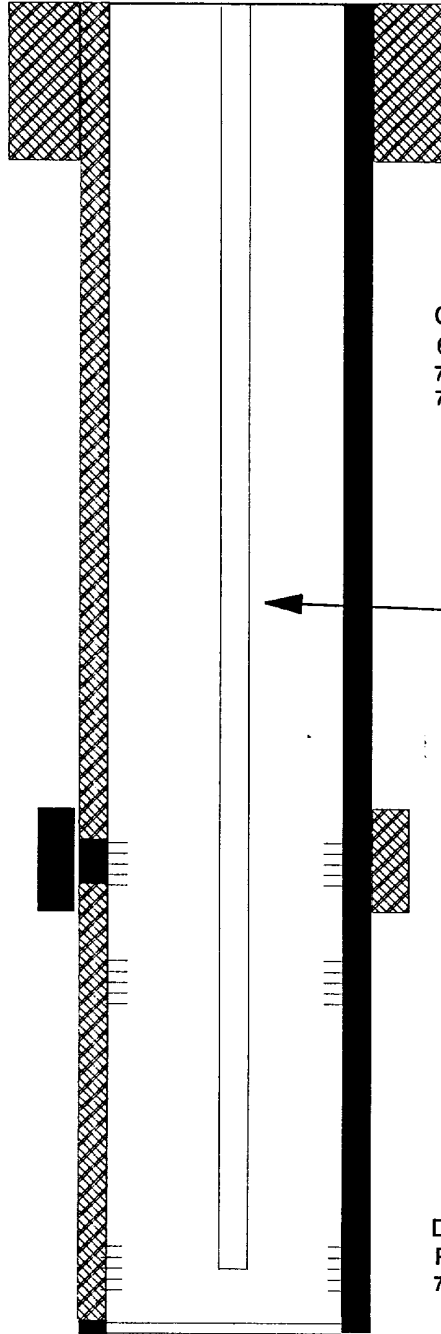
2 3/8" Tubing @

MESA VERDE
PERFORATIONS
SQZ W/ 250 SX CMT
4588'-4952'

MESA VERDE
PERFORATIONS
4992'-5352'

DAKOTA
PERFORATIONS
7186'-7444'

5 1/2" CASING @ 7554'
PBSD-7510'
TD- 7554'



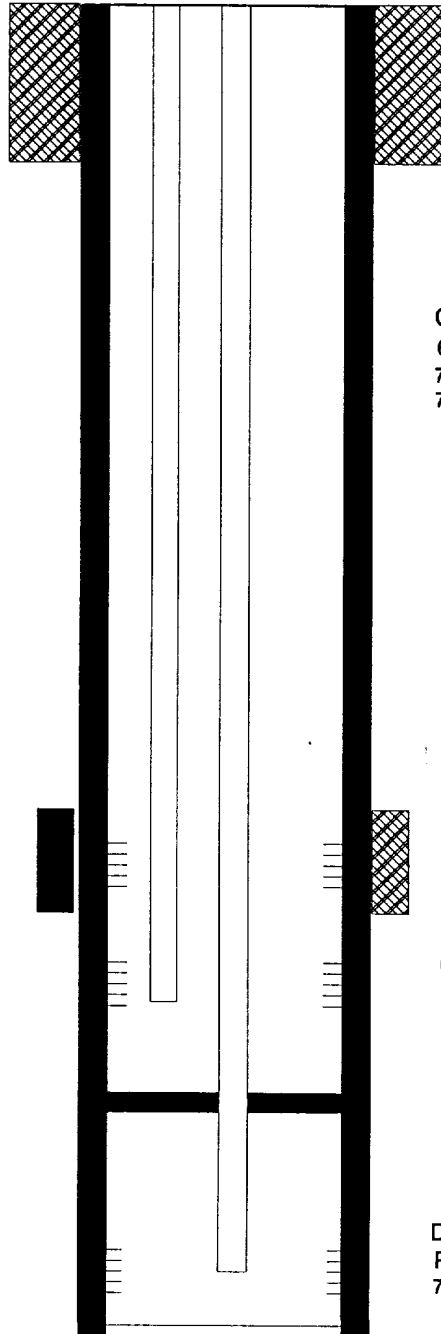


PAUL WILLIAMS No. 3E

CURRENT WELLBORE CONDITION

WELL:
PAUL WILLIAMS No. 3E
LOCATION:
NE/E
SEC 35 T26N R6W

SURFACE CASING
CIRC CMT
8 5/8" CSG IN 12 1/4" HOLE
@ 313' W/ 300 SX CMT



CASING CEMENTED W/
630 SX 1 st STAGE
750 SX 2 nd STAGE
750 SX 3 rd STAGE

2 1/16" TBG
@ 5312'

MESA VERDE
PERFORATIONS
SQZ W/ 250 SX CMT
4588'-4952'

2 1/16" TBG
@ 7396'

MESA VERDE
PERFORATIONS
4992'-5352'

PACKER @ 5400'

5 1/2" CASING @ 7554'
PBTD-7510'
TD- 7554'

DAKOTA
PERFORATIONS
7186'-7444'