

UNITED STATES
DEPARTMENT OF THE INTERIOR
GEOLOGICAL SURVEY(Other instructions on
reverse side)

30-039-22688

APPLICATION FOR PERMIT TO DRILL, DEEPEN, OR PLUG BACK

5. LEASE DESIGNATION AND SERIAL NO.

Contract #98

6. IF INDIAN, ALLOTTEE OR TRIBE NAME

Jicarilla Apache

7. UNIT AGREEMENT NAME

8. FARM OR LEASE NAME

Apache

9. WELL NO.

#5E

10. FIELD AND POOL, OR WILDCAT

Basin Dakota

11. SEC., T., R., M., OR BLK.
AND SURVEY OR AREA

Sec 17 T26N R3W

12. COUNTY OR PARISH

Rio Arriba

13. STATE

NM

1a. TYPE OF WORK

DRILL ☒DEEPEN ☐PLUG BACK ☐

b. TYPE OF WELL

OIL
WELL ☐GAS
WELL ☒

OTHER

SINGLE
ZONE ☒MULTIPLE
ZONE ☐

2. NAME OF OPERATOR

Jerome P. McHugh Jr.

3. ADDRESS OF OPERATOR

P O Box 208, Farmington, NM 87401

4. LOCATION OF WELL (Report location clearly and in accordance with any State requirements.)

At surface

1660' FNL - 1570' FEL SW/4 NE/4

At proposed prod. zone

14. DISTANCE IN MILES AND DIRECTION FROM NEAREST TOWN OR POST OFFICE*

31 miles NW of Lindrith, NM

15. DISTANCE FROM PROPOSED*

LOCATION TO NEAREST
PROPERTY OR LEASE LINE, FT.
(Also to nearest drlg. unit line, if any)

980'

16. NO. OF ACRES IN LEASE

2508.20

17. NO. OF ACRES ASSIGNED
TO THIS WELL

N 320

18. DISTANCE FROM PROPOSED LOCATION*
TO NEAREST WELL, DRILLING, COMPLETED,
OR APPLIED FOR, ON THIS LEASE, FT.

1500'

19. PROPOSED DEPTH

8282'

20. ROTARY OR CABLE TOOLS

Rotary

21. ELEVATIONS (Show whether DF, RT, GR, etc.)

7122' GR

22. APPROX. DATE WORK WILL START*

May 1, 1981

23.

PROPOSED CASING AND CEMENTING PROGRAM

SIZE OF HOLE	SIZE OF CASING	WEIGHT PER FOOT	SETTING DEPTH	QUANTITY OF CEMENT
12-1/4"	8-5/8"	24#	200'	150 sx
7-7/8"	4-1/2"	10.5 & 11.6#	8282'	350 sx 1st stage
				300 sx 2nd stage
				375 sx 3rd stage

Plan to spud a 12-1/4" hole & drill w/ mud to 200', set 8-5/8" surface csg., cemented to surface. Will then drill a 7-7/8" hole to a depth of 8282' and cement in three stages. The Dakota formation will then be selectively perforated, fraced, cleaned up after frac, well completed and tubing run.

GAS DEDICATED.



IN ABOVE SPACE DESCRIBE PROPOSED PROGRAM: If proposal is to deepen or plug back, give data on present productive zone and proposed new productive zone. If proposal is to drill or deepen directionally, give pertinent data on subsurface locations and measured and true vertical depths. Give blowout preventer program, if any.

24.

SIGNED

TITLE

Agent

DATE 3-9-81

(This space for Federal or State office use)

PERMIT NO.

APPROVAL DATE

APPROVED BY

TITLE

CONDITIONS OF APPROVAL, IF ANY:

*See Instructions On Reverse Side

APPROVED
DATE
MAR 27 1981
JAMES F. SIMS
DISTRICT ENGINEER

OIL CONSERVATION DIVISION

STATE OF NEW MEXICO
ENERGY AND MINERALS DEPARTMENTP. O. BOX 2088
SANTA FE, NEW MEXICO 87501Form C-102
Revised 10-1-79

All distances must be from the outer boundaries of the Section.

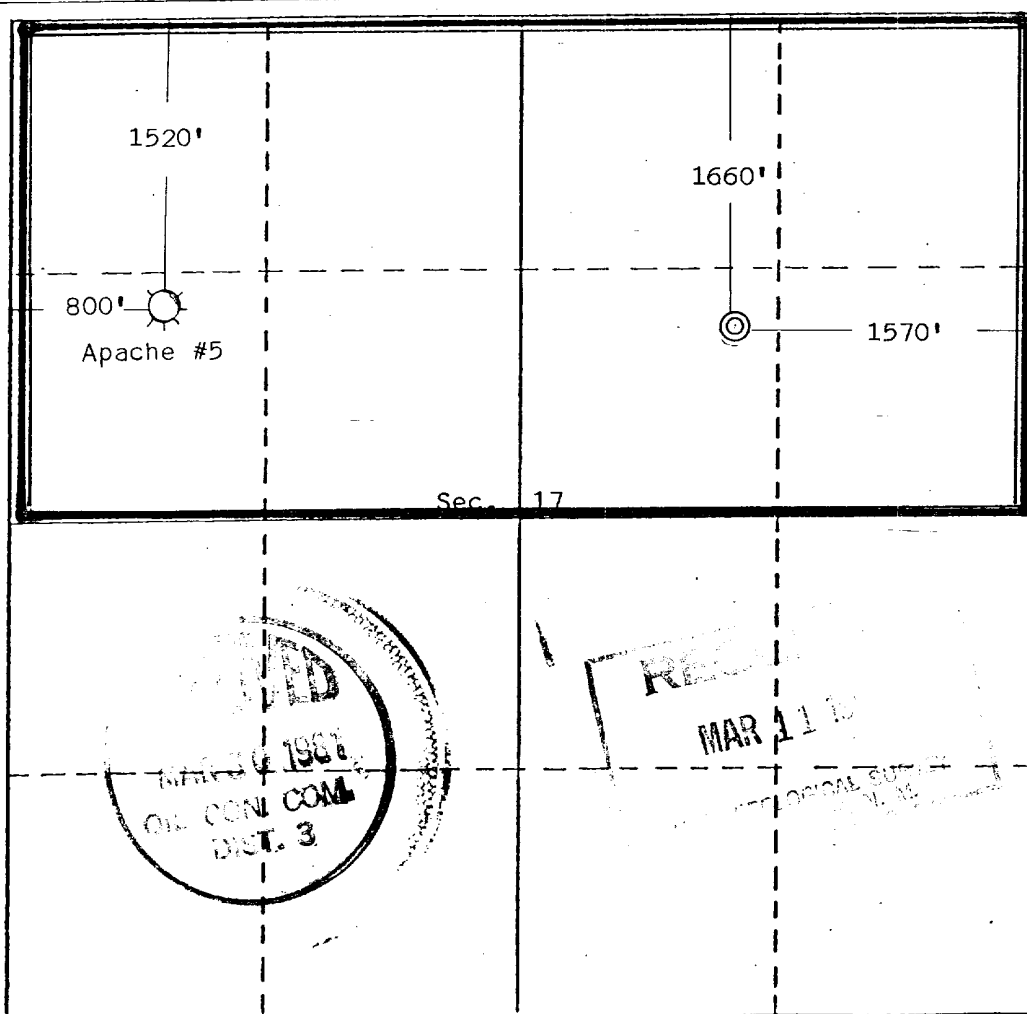
Operator Jerome P. McHugh			Lease Apache		Well No. 5-E
Unit Letter G	Section 17	Township 26 North	Range 3 West	County Rio Arriba	
Actual Footage Location of Well:					
1660 feet from the North line and		1570 feet from the East line			
Ground Level Elev. 7122	Producing Formation Dakota		Pool Basin Dakota		Dedicated Acreage: 320 Acres

1. Outline the acreage dedicated to the subject well by colored pencil or hatchure marks on the plat below.
2. If more than one lease is dedicated to the well, outline each and identify the ownership thereof (both as to working interest and royalty).
3. If more than one lease of different ownership is dedicated to the well, have the interests of all owners been consolidated by communitization, unitization, force-pooling, etc?

☐ Yes ☐ No If answer is "yes," type of consolidation _____

If answer is "no," list the owners and tract descriptions which have actually been consolidated. (Use reverse side of this form if necessary.) _____

No allowable will be assigned to the well until all interests have been consolidated (by communitization, unitization, forced-pooling, or otherwise) or until a non-standard unit, eliminating such interests, has been approved by the Division.



CERTIFICATION

I hereby certify that the information contained herein is true and complete to the best of my knowledge and belief.

Jerome P. McHugh Jr.
Name
Jerome P. McHugh Jr.

Position
Agent

Company
Dugan Production Corp.

Date
3-9-81

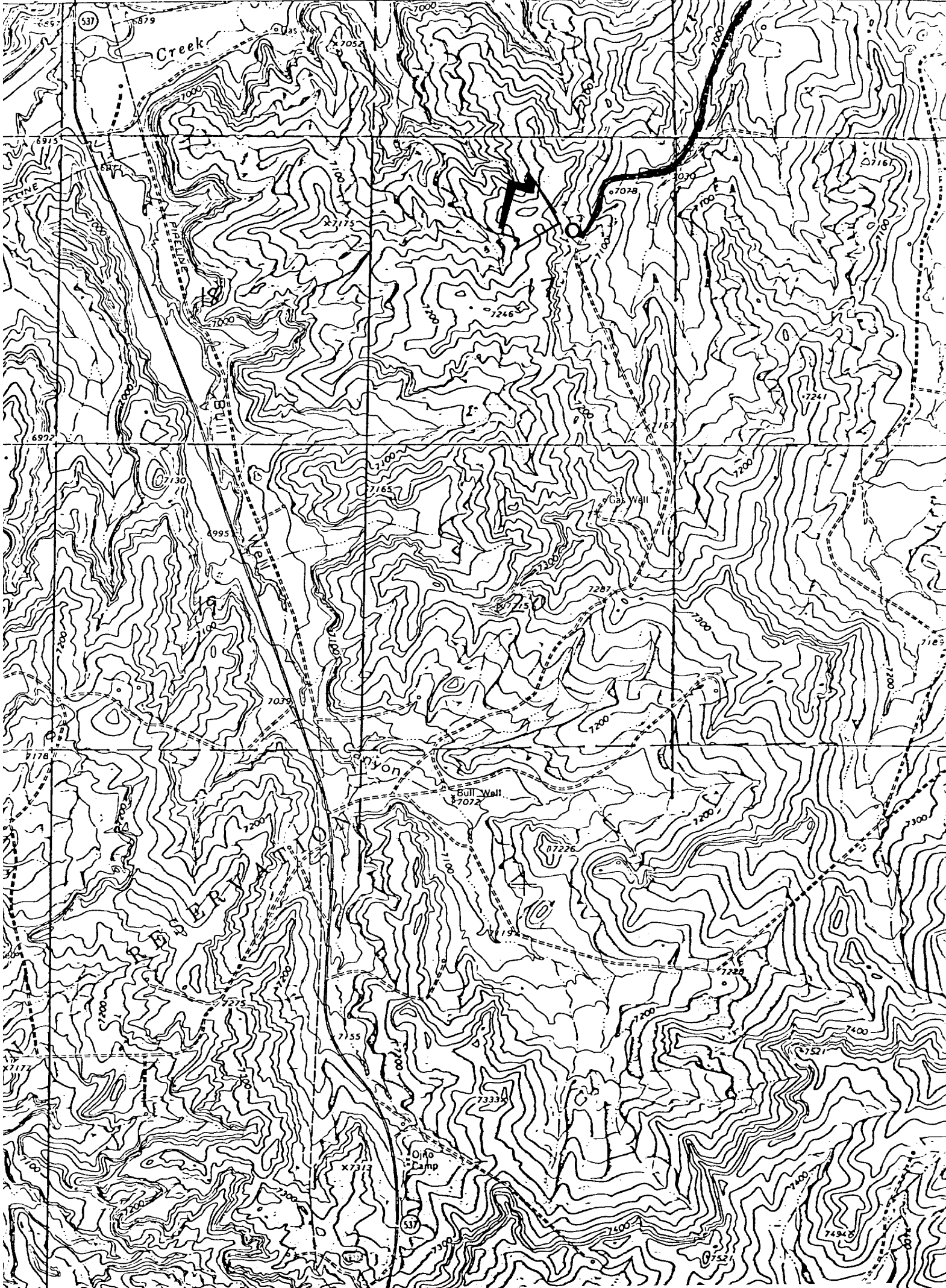
I have carefully checked the well location shown on this plat as obtained from field notes of actual surveys made by me or under my supervision and that the same is true and correct to the best of my knowledge and belief.

EDGAR L. RISENHOVER
NEW MEXICO
5979
REGISTERED LAND SURVEYOR

Date Surveyed
February 12, 1981

Registered Professional Engineer
and/or Land Surveyor

Edgar L. Risenhoover
Certificate No. 5979
Edgar L. Risenhoover, L.S.



Existing Road ———
Access Road - - - - -

JEROME P. McHUGH
Apache #5E