

UNITED STATES  
DEPARTMENT OF THE INTERIOR  
GEOLOGICAL SURVEY

## APPLICATION FOR PERMIT TO DRILL, DEEPEN, OR PLUG BACK

## 1a. TYPE OF WORK

DRILL ☒DEEPEN ☐PLUG BACK ☐

## b. TYPE OF WELL

OIL  
WELL ☐GAS  
WELL ☒

OTHER

SINGLE  
ZONE ☒MULTIPLE  
ZONE ☐

## 2. NAME OF OPERATOR

Jerome P. McHugh

## 3. ADDRESS OF OPERATOR

P O Box 208, Farmington, NM 87401

## 4. LOCATION OF WELL (Report location clearly and in accordance with any State requirements)

At surface

810' FNL - 820' FEL

At proposed prod. zone

## 14. DISTANCE IN MILES AND DIRECTION FROM NEAREST TOWN OR POST OFFICE\*

31 Miles NW of Lindrith, NM

## 15. DISTANCE FROM PROPOSED\*

LOCATION TO NEAREST  
PROPERTY OR LEASE LINE, FT.  
(Also to nearest drlg. unit line, if any)

810'

18. DISTANCE FROM PROPOSED LOCATION\*  
TO NEAREST WELL, DRILLING, COMPLETED,  
OR APPLIED FOR, ON THIS LEASE, FT.

2000'

## 16. NO. OF ACRES IN LEASE

2508.20

## 19. PROPOSED DEPTH

8377'

17. NO. OF ACRES ASSIGNED  
TO THIS WELL

N/320 -

## 20. ROTARY OR CABLE TOOLS

Rotary

## 21. ELEVATIONS (Show whether DF, RT, GR, etc.)

7140' GR

## 22. APPROX. DATE WORK WILL START\*

5-1-81

## 23.

## PROPOSED CASING AND CEMENTING PROGRAM

SIZE OF HOLE	SIZE OF CASING	WEIGHT PER FOOT	SETTING DEPTH	QUANTITY OF CEMENT
12-1/4"	8-5/8"	24#	200'	150 sx.
7-7/8"	4-1/2"	10.5 & 11.6#	8377'	350 sx, 1st stage
				300 sx, 2nd stage
				375 sx, 3rd stage

Plan to spud a 12-1/4" hole & drill w/ mud to 200', set 8-5/8" surface csg., cemented to surface. Will then drill a 7-7/8" hole to a depth of 8377' and cement in three stages. The Dakota formation will then be selectively perforated, fraced, cleaned up after frac, well completed and tubing run.

GAS DEDICATED.

IN ABOVE SPACE DESCRIBE PROPOSED PROGRAM: If proposal is to deepen or plug back, give data on present productive zone and proposed new productive zone. If proposal is to drill or deepen directionally, give pertinent data on subsurface locations and measured and true vertical depths. Give blowout preventer program, if any.

## 24.

SIGNED

*Jerome P. McHugh Jr.*  
Jerome P. McHugh Jr.

TITLE

Agent

DATE

3-4-81

(This space for Federal or State office use)

PERMIT NO.

APPROVAL DATE

APPROVED BY

TITLE

CONDITIONS OF APPROVAL, IF ANY:

\*See Instructions On Reverse Side

APPROVED  
AS AMENDEDMAR 27 1981  
*James F. Sims*  
JAMES F. SIMS  
DISTRICT ENGINEER

## OIL CONSERVATION DIVISION

STATE OF NEW MEXICO  
ENERGY AND MINERALS DEPARTMENT

P. O. BOX 2088  
SANTA FE, NEW MEXICO 87501

Form C-102  
Revised 10-1-78

All distances must be from the outer boundaries of the Section.

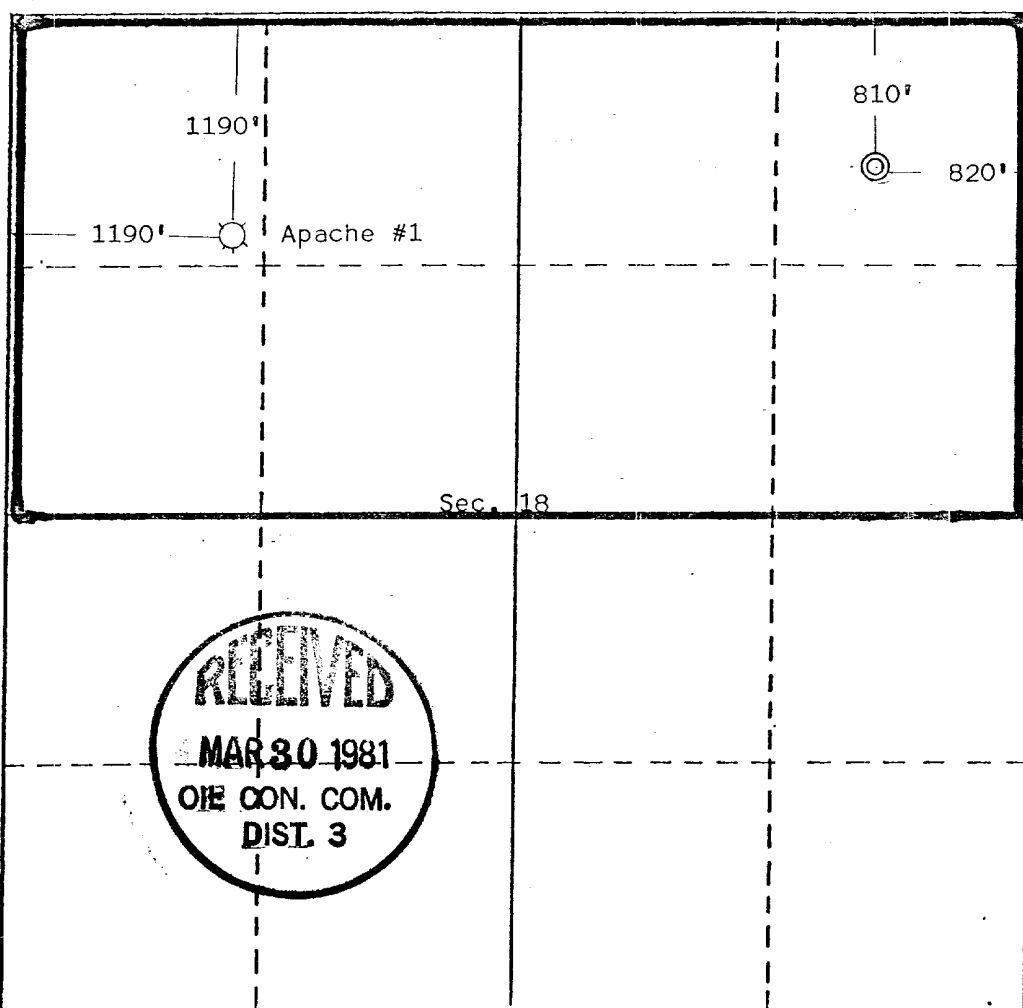
Operator Jerome P. McHugh			Lease Apache		Well No. 1-E
Unit Letter A	Section 18	Township 26 North	Range 3 West	County Rio Arriba	
Actual Footage Location of Well:					
810 feet from the North line and		820 feet from the East line			
Ground Level Elev. 7140	Producing Formation Dakota	Pool Basin Dakota	Dedicated Acreage: 320 Acres		

1. Outline the acreage dedicated to the subject well by colored pencil or hachure marks on the plat below.
2. If more than one lease is dedicated to the well, outline each and identify the ownership thereof (both as to working interest and royalty).
3. If more than one lease of different ownership is dedicated to the well, have the interests of all owners been consolidated by communitization, unitization, force-pooling, etc?

☐ Yes ☐ No If answer is "yes," type of consolidation \_\_\_\_\_

If answer is "no," list the owners and tract descriptions which have actually been consolidated. (Use reverse side of this form if necessary.) \_\_\_\_\_

No allowable will be assigned to the well until all interests have been consolidated (by communitization, unitization, forced-pooling, or otherwise) or until a non-standard unit, eliminating such interests, has been approved by the Division.



## CERTIFICATION

I hereby certify that the information contained herein is true and complete to the best of my knowledge and belief.

*Jerome P. McHugh Jr.*  
Name  
Jerome P. McHugh

Position  
Agent

Company  
Dugan Production Corp.

Date  
3-4-81

I hereby certify that the location shown on this plat was determined by me or under my supervision, and that the same is true and correct to the best of my knowledge.

Date Surveyed

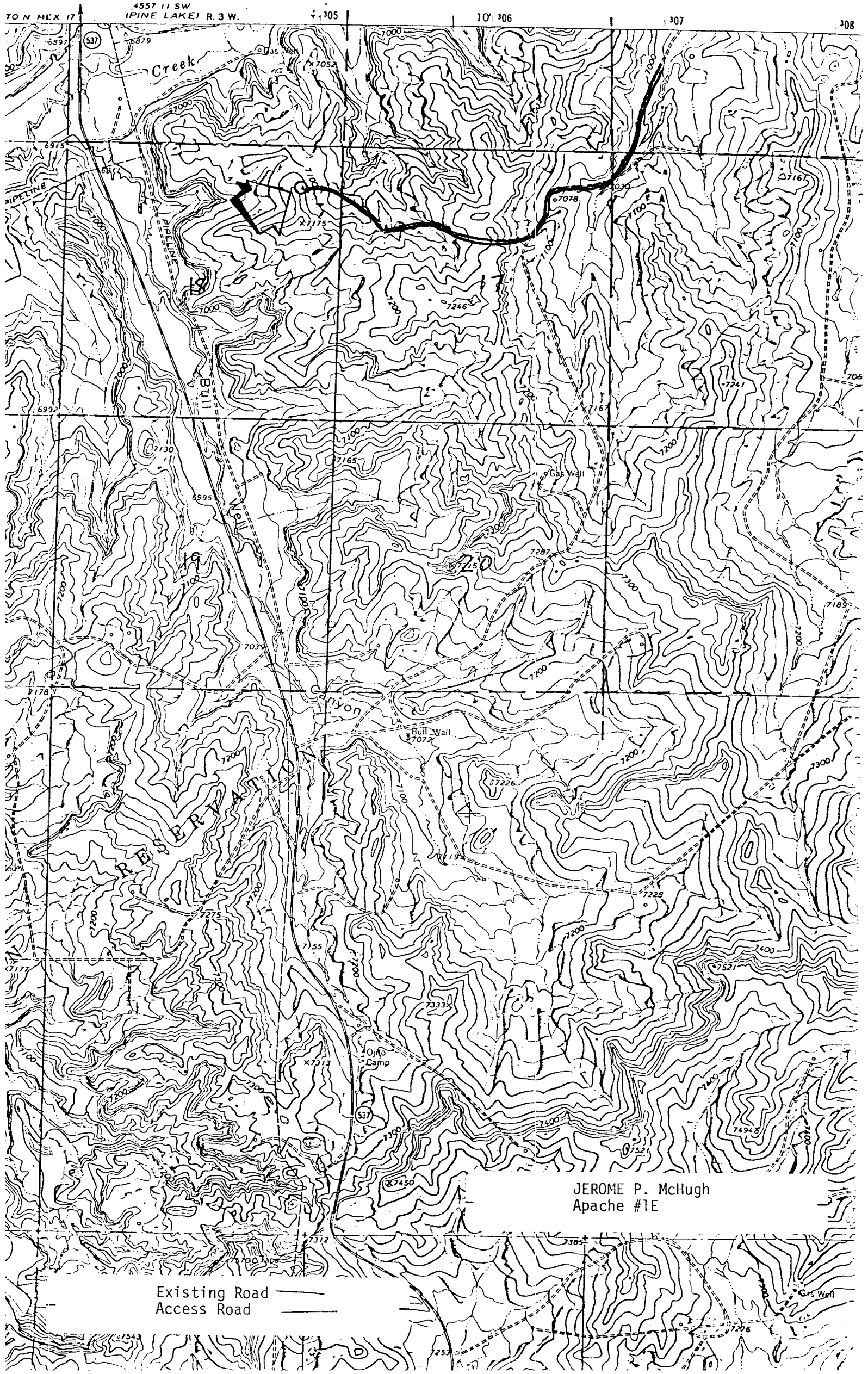
February 13, 1981

Registered Professional Engineer  
and/or Land Surveyor

*Edgar L. Risenhoover*

Certificate No. 5979

Edgar L. Risenhoover, L.S.



4557 11 SW  
IPINE LAKE R. 3 W.

305

10' 306

307

308

(537)

Creek

PIPELINE

Bull

Canyon

RESERVATION

Ojo Camp

JEROME P. McHugh  
Apache #1E

Existing Road ———  
Access Road - - - - -

Gas Well