

Form 9-331 C
(May 1963)

SUBMIT IN TRIPLICATE*

(Other instructions on
reverse side)Form approved.
Budget Bureau No. 42-R1425.UNITED STATES
DEPARTMENT OF THE INTERIOR
GEOLOGICAL SURVEY

APPLICATION FOR PERMIT TO DRILL, DEEPEN, OR PLUG BACK

1a. TYPE OF WORK

DRILL ☒DEEPEN ☐PLUG BACK ☐

b. TYPE OF WELL

OIL
WELL ☐GAS
WELL ☒

OTHER

SINGLE
ZONE ☒MULTIPLE
ZONE ☐

2. NAME OF OPERATOR

Dugan Production Corp.

3. ADDRESS OF OPERATOR

P O Box 208, Farmington, NM 87401

4. LOCATION OF WELL (Report location clearly and in accordance with any State requirements.)*

At surface

1620' FNL - 1080' FEL

At proposed prod. zone

1570

1030

14. DISTANCE IN MILES AND DIRECTION FROM NEAREST TOWN OR POST OFFICE*

11 miles south of Lindrith NM

15. DISTANCE FROM PROPOSED*

LOCATION TO NEAREST
PROPERTY OR LEASE LINE, FT.
(Also to nearest drlg. unit line, if any)

1080'

18. DISTANCE FROM PROPOSED LOCATION*
TO NEAREST WELL, DRILLING, COMPLETED,
OR APPLIED FOR, ON THIS LEASE, FT.

1/2 mile

16. NO. OF ACRES IN LEASE

640

19. PROPOSED DEPTH

8100'

17. NO. OF ACRES ASSIGNED
TO THIS WELL

40 320

20. ROTARY OR CABLE TOOLS

Rotary

21. ELEVATIONS (Show whether DF, RT, GR, etc.)

7795' GL

DRILLING OPERATIONS AUTHORIZED ARE
SUBJECT TO COMPLIANCE WITH ATTACHED"GENERAL REQUIREMENTS"
PROPOSED CASING AND CEMENTING PROGRAM

22. APPROX. DATE WORK WILL START*

ASAP

This action is subject to administrative
appeal pursuant to 30 CFR 290.

| SIZE OF HOLE | SIZE OF CASING | WEIGHT PER FOOT | SETTING DEPTH | QUANTITY OF CEMENT |
|--------------|----------------|-----------------|---------------|--------------------|
| 12-1/4" | 8-5/8" | 24# | 225' | 125 sx |
| 7-7/8" | 4-1/2" | 10.5# | 8100' | 1850 cu.ft. slurry |

Plan to drill a 12-1/4" hole w/ spud mud to approx. 250' and set 8-5/8" surface casing w/ cement to surface. Will then drill a 7-7/8" hole w/ mud and gel to TD to test the Dakota formation. If productive, plan to set 4 1/2" csg. to TD, perforate, frac, and clean out after frac. Will then complete well using 1 1/4" tubing to produce.

GAS NOT DEDICATED.



IN ABOVE SPACE DESCRIBE PROPOSED PROGRAM: If proposal is to deepen or plug back, give data on present productive zone and proposed new productive zone. If proposal is to drill or deepen directionally, give pertinent data on subsurface locations and measured and true vertical depths. Core blowout preventer program, if any.

24. Jerome P. McHugh Jr.
SIGNED Jerome P. McHugh Jr. TITLE Landman DATE 8-21-81

(This space for Federal or State office use)

PERMIT NO. _____

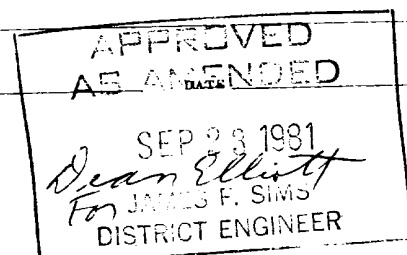
APPROVAL DATE _____

APPROVED BY _____

TITLE _____

CONDITIONS OF APPROVAL, IF ANY:

sh 7



UNITED STATES
DEPARTMENT OF THE INTERIOR
GEOLOGICAL SURVEY

SUNDRY NOTICES AND REPORTS ON WELLS

(Do not use this form for proposals to drill or to deepen or plug back to a different reservoir. Use Form 9-331-C for such proposals.)

1. oil well ☒ gas well ☐ other ☐

2. NAME OF OPERATOR

Dugan Production Corp.

3. ADDRESS OF OPERATOR

P O Box 208, Farmington, NM 87401

4. LOCATION OF WELL (REPORT LOCATION CLEARLY. See space 17 below.)

AT SURFACE: 1570' FNL - 1030' FEL**
AT TOP PROD. INTERVAL:
AT TOTAL DEPTH:

16. CHECK APPROPRIATE BOX TO INDICATE NATURE OF NOTICE, REPORT, OR OTHER DATA

REQUEST FOR APPROVAL TO:

TEST WATER SHUT-OFF ☐

FRACTURE TREAT ☐

SHOOT OR ACIDIZE ☐

REPAIR WELL ☐

PULL OR ALTER CASING ☐

MULTIPLE COMPLETE ☐

CHANGE ZONES ☒

ABANDON* ☐

(other) Change location ☐

SUBSEQUENT REPORT OF:

(NOTE: Report results of multiple completion or zone change on Form 9-330.)

17. DESCRIBE PROPOSED OR COMPLETED OPERATIONS (Clearly state all pertinent details, and give pertinent dates including estimated date of starting any proposed work. If well is directionally drilled, give subsurface locations and measured and true vertical depths for all markers and zones pertinent to this work.)*

Request approval to make the following changes:

* I. Change zone from Dakota to Mancos, thereby changing from gas to oil well and making proposed TD 7700'.

**II. Move location 50' to the East and 50' to the North of previous location, making new location 1570' FNL & 1030' FEL

Amended C-102, plat, is submitted herewith.

Copy of Receipt & Release from surface land owner is submitted herewith.

Subsurface Safety Valve: Manv. and Type

Set @ Ft.

18. I hereby certify that the foregoing is true and correct

SIGNED

Thomas A. Dugan

TITLE Petroleum Engineer

DATE

9-9-81

(This space for Federal or State office use)

APPROVED BY

TITLE

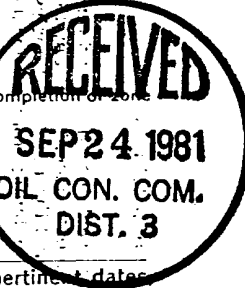
DATE

CONDITIONS OF APPROVAL, IF ANY.

BY

INGFOV

NMOCC



**NEW MEXICO OIL CONSERVATION COMMISSION
WELL LOCATION AND ACREAGE DEDICATION PLAT**

Form C-102
Supersedes C-128
Effective 1-1-65

All distances must be from the outer boundaries of the Section.

| | | | | | | | | |
|--|--------------------------------------|-----------------------------|------------------------------------|-----------------------------|--|---------------------------------------|--|--|
| Operator Dugan Production Corp. | | | Lease Divide | | | Well No. #1 | | |
| Unit Letter H | Section 35 | Township 26 North | Range 2 West | County Rio Arriba | | | | |
| Actual Footage Location of Well: 1570 feet from the North line and 1030 feet from the East line | | | | | | | | |
| Ground Level Elev. 7795' | Producing Formation Mancos | | Pool Undesignated Mancos | | | Dedicated Acreage: 40 Acres | | |

1. Outline the acreage dedicated to the subject well by colored pencil or hachure marks on the plat below.
2. If more than one lease is dedicated to the well, outline each and identify the ownership thereof (both as to working interest and royalty).
3. If more than one lease of different ownership is dedicated to the well, have the interests of all owners been consolidated by communitization, unitization, force-pooling, etc?

☐ Yes ☐ No If answer is "yes," type of consolidation _____

If answer is "no," list the owners and tract descriptions which have actually been consolidated. (Use reverse side of this form if necessary.) _____

No allowable will be assigned to the well until all interests have been consolidated (by communitization, unitization, forced-pooling, or otherwise) or until a non-standard unit, eliminating such interests, has been approved by the Commission.

CERTIFICATION

I hereby certify that the information contained herein is true and complete to the best of my knowledge and belief.

Sherman E. Dugan

Name
Sherman E. Dugan

Position
Landman

Company
Dugan Production Corp.

Date
9-9-81

I hereby certify that the well location shown on this plat was plotted from field notes of actual surveys made by me or under my supervision, and that the same is true and correct to the best of my knowledge and belief.

Date Surveyed
9-3-81

Registered Professional Engineer
and/or Land Surveyor

Thomas A. Dugan
Thomas A. Dugan

Certificate No.

PE/LS NM #2373

0 330 660 990 1320 1650 1980 2310 2640 2000 1800 1600 1400 1200 1000 800 600 400 200 0

OIL CONSERVATION DIVISION

STATE OF NEW MEXICO
ENERGY AND MINERALS DEPARTMENTP. O. BOX 2088
SANTA FE, NEW MEXICO 87501Form C-102
Revised 10-1-78

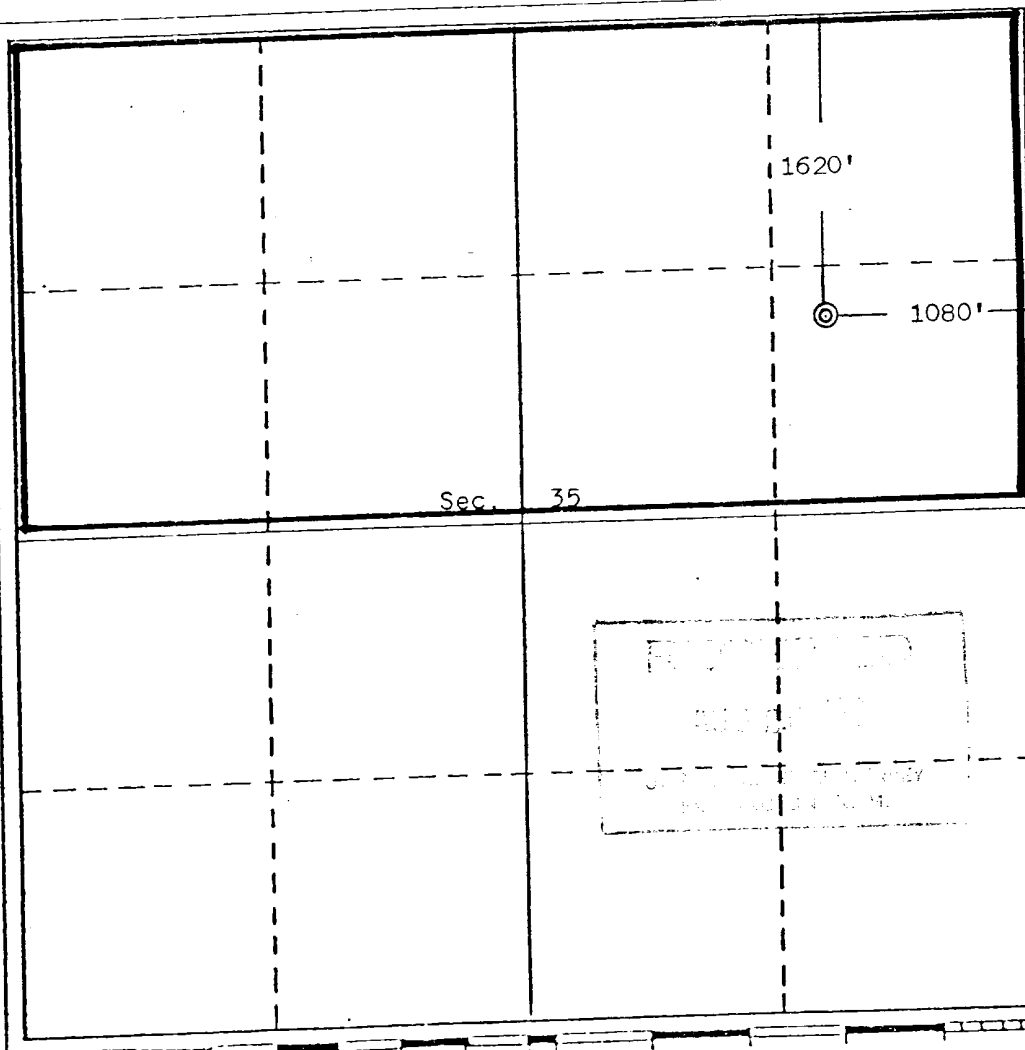
All distances must be from the outer boundaries of the Section.

| | | | | |
|--|-------------------------------|----------------------|---------------------------------|----------------------|
| Operator Dugan Production Corporation | | Lease Divide | | Well No. 1 |
| Unit Letter H | Section 35 | Township 26 North | Range 2 West | County Rio Arriba |
| Actual Footage Location of Well: 1620 feet from the North line and 1080 feet from the East line | | | | |
| Ground Level Elev. 7795 | Producing Formation Dakota | Pool Basin Dakota | Dedicated Acreage: 320 Acres | |

1. Outline the acreage dedicated to the subject well by colored pencil or hachure marks on the plat below.
2. If more than one lease is dedicated to the well, outline each and identify the ownership thereof (both as to working interest and royalty).
3. If more than one lease of different ownership is dedicated to the well, have the interests of all owners been consolidated by communitization, unitization, force-pooling, etc?

☐ Yes ☐ No If answer is "yes," type of consolidation _____
If answer is "no," list the owners and tract descriptions which have actually been consolidated. (Use reverse side of this form if necessary.) _____

No allowable will be assigned to the well until all interests have been consolidated (by communitization, unitization, forced-pooling, or otherwise) or until a non-standard unit, eliminating such interests, has been approved by the Division.



CERTIFICATION

I hereby certify that the information contained herein is true and complete to the best of my knowledge and belief.

Name
Jerome P. McHugh Jr.

Position
Landman

Company
Dugan Production Corp.

Date
August 21, 1981

I hereby certify that the location shown on this plat was obtained from field notes of actual survey made by me or under my supervision, and that the same is true and correct to the best of my knowledge.

Date Surveyed
August 18, 1981

Registered Professional Engineer
and/or Land Surveyor

Edgar L. Risenhoover
Certificate No. 5979
Edgar L. Risenhoover, L.S.



Existing Road
Access Road

DUGAN PRODUCTION CORP.
Divide #1