

UNITED STATES
DEPARTMENT OF THE INTERIOR
GEOLOGICAL SURVEY

APPLICATION FOR PERMIT TO DRILL, DEEPEN, OR PLUG BACK

1a. TYPE OF WORK

DRILL ☒

DEEPEN ☐

PLUG BACK ☐

b. TYPE OF WELL

OIL
WELL ☐

GAS
WELL ☒

OTHER

SINGLE
ZONE ☒

MULTIPLE
ZONE ☐

2. NAME OF OPERATOR

Tenneco Oil Company

3. ADDRESS OF OPERATOR

P.O. Box 3249, Englewood, CO 80155

4. LOCATION OF WELL (Report location clearly and in accordance with any State requirements.)
At surface 1120' FSL, 1065' FEL

At proposed prod. zone same as above

14. DISTANCE IN MILES AND DIRECTION FROM NEAREST TOWN OR POST OFFICE* S. GEOLOGICAL SURVEY
14.2 miles SE of Gould Pass, New Mexico FARMINGTON, N. M.

15. DISTANCE FROM PROPOSED*
LOCATION TO NEAREST
PROPERTY OR LEASE LINE, FT.
(Also to nearest drlg. unit line, if any) 1065

16. NO. OF ACRES IN LEASE

2558.36

18. DISTANCE FROM PROPOSED LOCATION*
TO NEAREST WELL, DRILLING, COMPLETED,
OR APPLIED FOR, ON THIS LEASE, FT.

19. PROPOSED DEPTH

7560

17. NO. OF ACRES ASSIGNED
TO THIS WELL

E 320

20. ROTARY OR CABLE TOOLS

Rotary

21. ELEVATIONS (Show whether DF, RT, GR, etc.)

6574' ground

22. APPROX. DATE WORK WILL START*

ASAP

23. PROPOSED CASING AND CEMENTING PROGRAM

SIZE OF HOLE	SIZE OF CASING	WEIGHT PER FOOT	SETTING DEPTH	QUANTITY OF CEMENT
12-1/4"	9-5/8"	36#	+ 300'	Circ. cement to surface
8-3/4"/7-7/8"	4-1/2"	10.5#, 11.6#	+ 7560	Circ. cement to liner top

See attached drilling procedure.
Gas is dedicated.



IN ABOVE SPACE DESCRIBE PROPOSED PROGRAM: If proposal is to deepen or plug back, give data on present productive zone and proposed new productive zone. If proposal is to drill or deepen directionally, give pertinent data on subsurface locations and measured and true vertical depths. Give blowout preventer program, if any.

24.

SIGNED Donell Harrison TITLE Production Analyst DATE 12/17/81

(This space for Federal or State office use)

PERMIT NO.

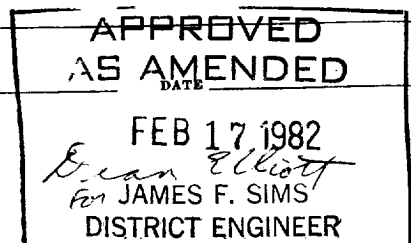
APPROVAL DATE

APPROVED BY

TITLE

CONDITIONS OF APPROVAL, IF ANY:

h2



NMOCC

OIL CONSERVATION DIVISION

P. O. BOX 2088

SANTA FE, NEW MEXICO 87501

Form C-107
Revised 10-1-78

STATE OF NEW MEXICO

ENERGY AND MINERALS DEPARTMENT

All distances must be from the outer boundaries of the Section.

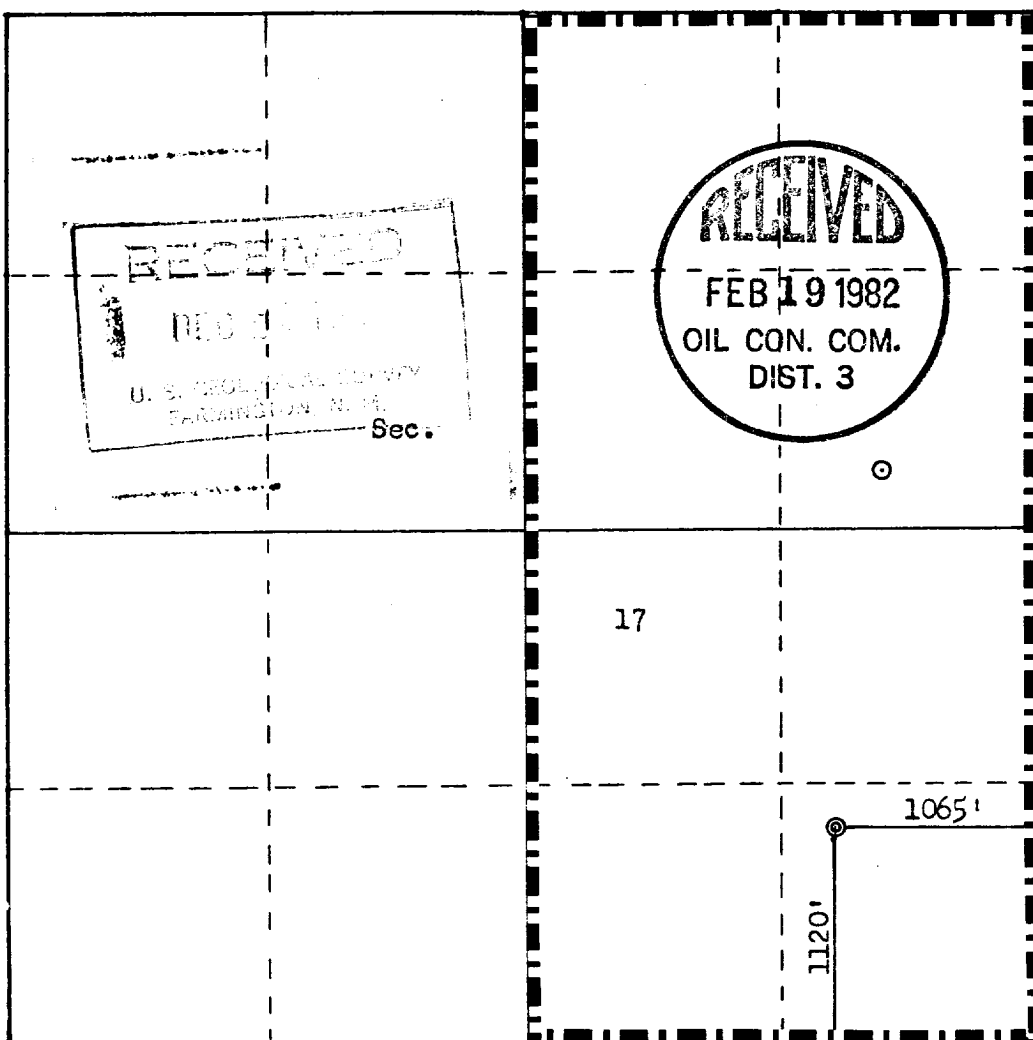
Operator TENNECO OIL COMPANY			Lease JICARILLA "A"		Well No. 8E
Unit Letter P	Section 17	Township 26N	Range 5W	County Rio Arriba	
Actual Footage Location of Well: 1120 feet from the South line and 1065 feet from the East line					
Ground Level Elev. 6574	Producing Formation Dakota		Pool Basin Dakota	Dedicated Acreage: E 320 Acres	

1. Outline the acreage dedicated to the subject well by colored pencil or hachure marks on the plat below.
2. If more than one lease is dedicated to the well, outline each and identify the ownership thereof (both as to working interest and royalty).
3. If more than one lease of different ownership is dedicated to the well, have the interests of all owners been consolidated by communitization, unitization, force-pooling, etc?

☐ Yes ☐ No If answer is "yes," type of consolidation _____

If answer is "no," list the owners and tract descriptions which have actually been consolidated. (Use reverse side of this form if necessary.) _____

No allowable will be assigned to the well until all interests have been consolidated (by communitization, unitization, forced-pooling, or otherwise) or until a non-standard unit, eliminating such interests, has been approved by the Commission.



CERTIFICATION

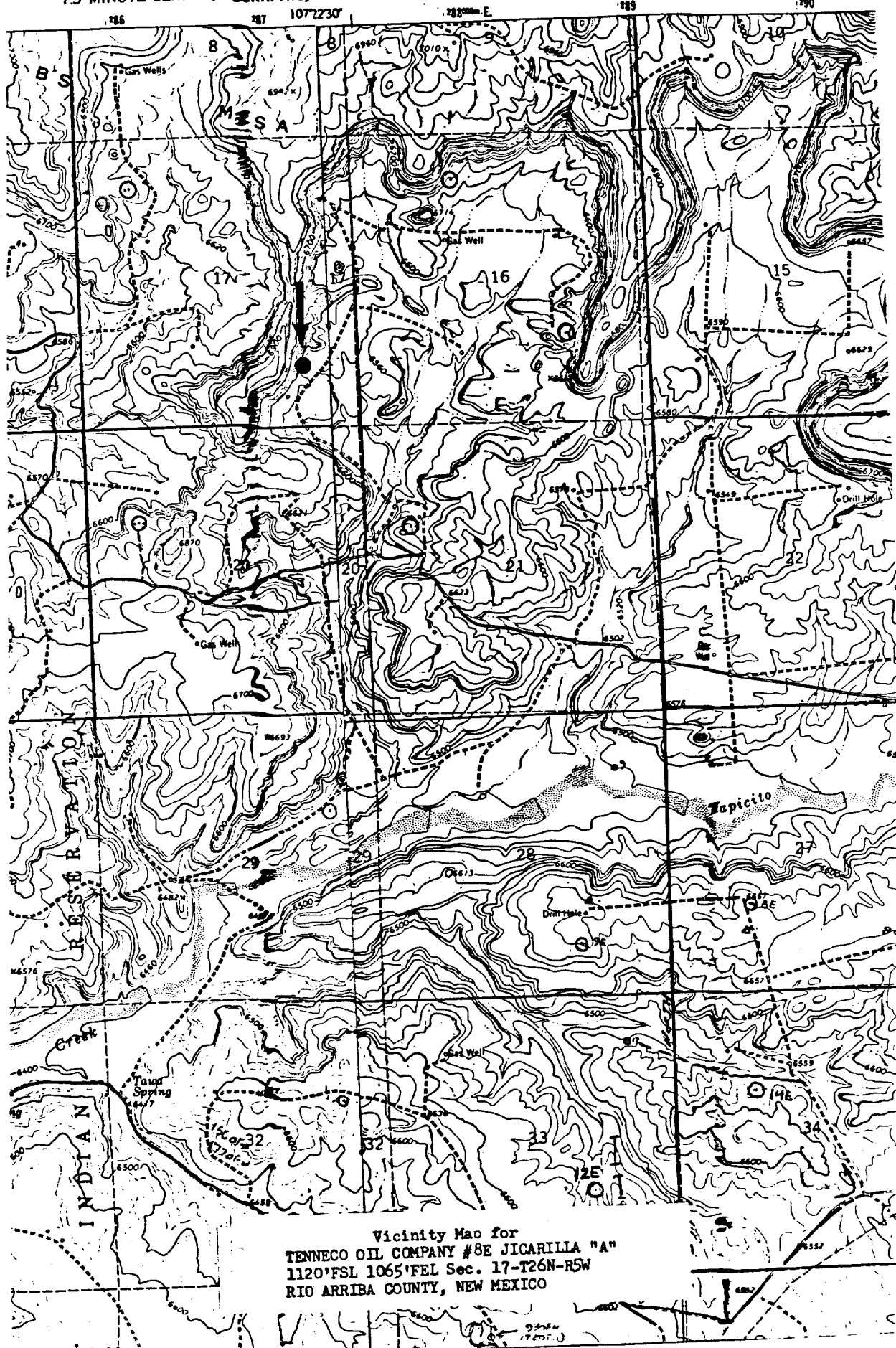
I hereby certify that the information contained herein is true and complete to the best of my knowledge and belief.

Name
Don Morrison
Position
Production Analyst
Company
Tenneco Oil Company
Date
10-13-81

I hereby certify that the well location shown on this plat was plotted from field notes of actual surveys made by me or under my supervision, and that the same is true and correct to the best of my knowledge and belief.

Date Surveyed
October 1, 1981
Registered Professional Engineer
and Land Surveyor
Fred B. Kerr Jr.
Fred B. Kerr Jr.
Certificate No. 3950

Scale: 1"=1000'



Vicinity Map for
TENNECO OIL COMPANY #8E JICARILLA "A"
1120' FSL 1065' FEL Sec. 17-T26N-R5W
RIO ARriba COUNTY, NEW MEXICO