

UNITED STATES
DEPARTMENT OF THE INTERIOR
GEOLOGICAL SURVEY30-039-23011
5. LEASE DESIGNATION AND SERIAL NO.

SF 079071 -B

6. IF INDIAN, ALLOTTEE OR TRIBE NAME

7. UNIT AGREEMENT NAME

8. FARM OR LEASE NAME

Canyon Largo Unit

9. WELL NO.

315

10. FIELD AND POOL OR WILDCAT

Devils Fork Gallup

11. SEC., T., R., M., OR BLK.
AND SURVEY OR AREA

Section 28, T25N, R6W

12. COUNTY OR PARISH
Rio Arriba13. STATE
New Mexico

1a. TYPE OF WORK

DRILL ☒DEEPEN ☐PLUG BACK ☐

b. TYPE OF WELL

OIL
WELL ☒GAS
WELL ☐

OTHER

SINGLE
ZONE ☒MULTIPLE
ZONE ☐

2. NAME OF OPERATOR

MERRION OIL & GAS CORPORATION

3. ADDRESS OF OPERATOR

P. O. Box 1017, Farmington, New Mexico

4. LOCATION OF WELL (Report location clearly and in accordance with any State requirements.)*

At surface

1770 FNL & 1740 FWL

At proposed prod. zone Same

14. DISTANCE IN MILES AND DIRECTION FROM NEAREST TOWN OR POST OFFICE*

Approximately 12 miles NE of Lybrook.

15. DISTANCE FROM PROPOSED*

LOCATION TO NEAREST
PROPERTY OR LEASE LINE, FT.
(Also to nearest drig. unit line, if any)

1740'

18. DISTANCE FROM PROPOSED LOCATION*

TO NEAREST WELL, DRILLING, COMPLETED,
OR APPLIED FOR, ON THIS LEASE, FT.

200

16. NO. OF ACRES IN LEASE

160

17. NO. OF ACRES ASSIGNED
TO THIS WELL

160

19. PROPOSED DEPTH

6211

20. ROTARY OR CABLE TOOLS

Rotary

21. ELEVATIONS (Show whether DF, RT, GR, etc.)

6728' GL

22. APPROX. DATE WORK WILL START*
Spring, 1982

23.

PROPOSED CASING AND CEMENTING PROGRAM

SIZE OF HOLE	SIZE OF CASING	WEIGHT PER FOOT	SETTING DEPTH	QUANTITY OF CEMENT
12-1/4"	8-5/8"	20 #/ft.	200	175 sx
7-7/8"	4-1/2"	10.5 #/ft.	6211	875 sx

Propose to drill 12-1/4" hole to 200 ft., set 200 ft. of 8-4/8" 20 #/ft. new surface casing w/175 sx Class 'B' 2% CACL₂. Will drill 7-7/8" hole to TD and run open hole logs. If logs appear productive will run 4-1/2", K-55, 10.5 #/ft. new casing to TD and 2 stage cement. 1st stage 175 sx Class 'H' 2% gel to cover Gallup. Stage tool below point lookout @ 4675' est. 2nd stage 600 sx Class 'B' w/2% D-79 followed by 100 sx Class 'H' 2% gel. Will bring cement above Ojo Alamo. Drilling mud will be low water loss gel, fresh water, starch. Will perforate and frac as necessary. Blowout prevention equipment will be 10" 900 series double ram.

Estimated Tops:

Ojo Alamo	1836	Gallup	5811
Pictured Cliffs	2491		
Mesa Verde	4051		

IN ABOVE SPACE DESCRIBE PROPOSED PROGRAM: If proposal is to deepen or plug back, give data on present productive zone and proposed new productive zone. If proposal is to drill or deepen directionally, give pertinent data on subsurface locations and measured and true vertical depths. Give blowout preventer program, if any.

24.

SIGNED

TITLE Engineer

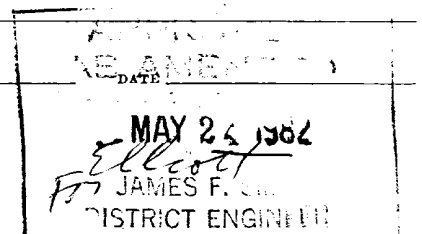
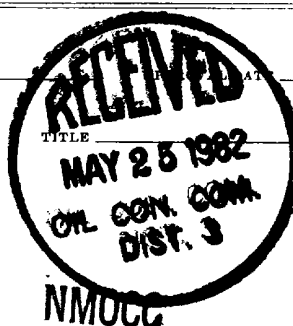
DATE 3/5/82

(This space for Federal or State office use)

PERMIT NO.

APPROVED BY

CONDITIONS OF APPROVAL, IF ANY:





All distances must be from the outer boundaries of the Section.

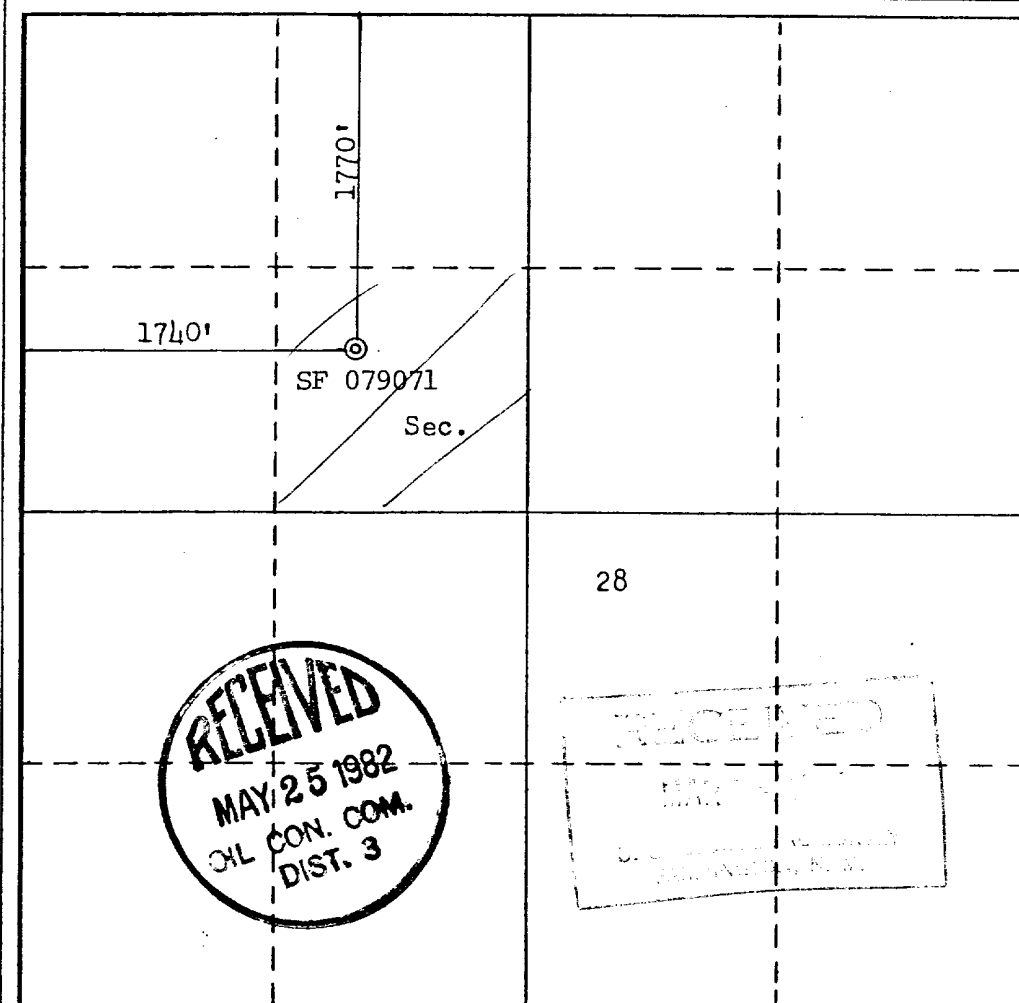
Operator MERRION OIL & GAS CORPORATION			Lease Canyon Largo Unit		Well No. 315
Unit Letter F	Section 28	Township 25N	Range 6W	County Rio Arriba	
Actual Footage Location of Well: 1770 feet from the North line and 1740 feet from the West line					
Ground Level Elev. 6728	Producing Formation Gallup		Pool Devils Fork Gallup		Dedicated Acreage: 166 Acres

1. Outline the acreage dedicated to the subject well by colored pencil or hachure marks on the plat below.
2. If more than one lease is dedicated to the well, outline each and identify the ownership thereof (both as to working interest and royalty).
3. If more than one lease of different ownership is dedicated to the well, have the interests of all owners been consolidated by communitization, unitization, force-pooling, etc?

☐ Yes ☐ No If answer is "yes," type of consolidation _____

If answer is "no," list the owners and tract descriptions which have actually been consolidated. (Use reverse side of this form if necessary.) _____

No allowable will be assigned to the well until all interests have been consolidated (by communitization, unitization, forced-pooling, or otherwise) or until a non-standard unit, eliminating such interests, has been approved by the Commission.



CERTIFICATION

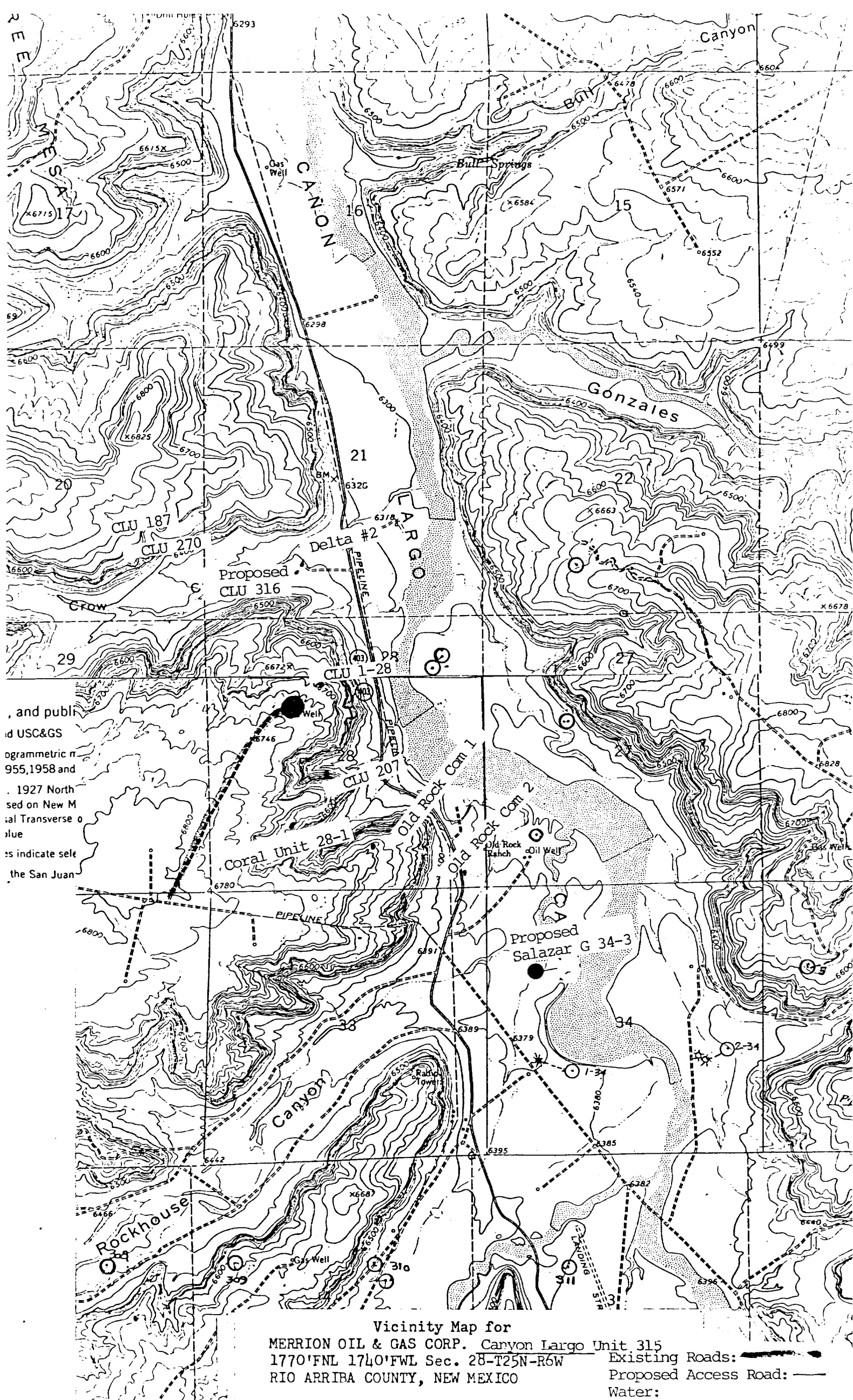
I hereby certify that the information contained herein is true and complete to the best of my knowledge and belief.

Name
J. Gregory Merrion
Position
President
Company
Merrion Oil & Gas Corporation
Date
3/5/82

I hereby certify that the well location shown on this plat was plotted from field notes of actual surveys made by me or under my supervision, and that the same is true and correct to the best of my knowledge and belief.

Date Surveyed
March 2, 1982
Registered Professional Engineer and/or Land Surveyor
Fred B. Kerr Jr.
Certificate No.
3950





, and publi
d USC&GS
ogrammetric n
955,1958 and
. 1927 North
sed on New M
al Transverse o
blue
s indicate sele
the San Juan

Vicinity Map for
MERRION OIL & GAS CORP. Canyon Largo Unit 315
1770'FNL 1740'FWL Sec. 28-T25N-R6W
RIO ARRIBA COUNTY, NEW MEXICO

Existing Roads:
Proposed Access Road:
Water: