

UNITED STATES
DEPARTMENT OF THE INTERIOR
GEOLOGICAL SURVEY

APPLICATION FOR PERMIT TO DRILL, DEEPEN, OR PLUG BACK

1a. TYPE OF WORK

DRILL ☒DEEPEN ☐PLUG BACK ☐

b. TYPE OF WELL

OIL
WELL ☒GAS
WELL ☐

OTHER

SINGLE
ZONE ☐MULTIPLE
ZONE ☐

2. NAME OF OPERATOR

Merrion Oil & Gas Corporation

3. ADDRESS OF OPERATOR

P. O. Box 1017

4. LOCATION OF WELL (Report location clearly and in accordance with any State requirements.)*

At surface 960' FNL 1650' FEL

At proposed prod. zone Same

14. DISTANCE IN MILES AND DIRECTION FROM NEAREST TOWN OR POST OFFICE*

10 Miles NE Counselor, New Mexico

15. DISTANCE FROM PROPOSED*

LOCATION TO NEAREST
PROPERTY OR LEASE LINE, FT.
(Also to nearest drig. unit line, if any)

960'

16. NO. OF ACRES IN LEASE

1760

18. DISTANCE FROM PROPOSED LOCATION*

TO NEAREST WELL, DRILLING, COMPLETED,
OR APPLIED FOR, ON THIS LEASE, FT.

2600'

19. PROPOSED DEPTH

5920

17. NO. OF ACRES ASSIGNED

460

20. ROTARY OR CABLE TOOLS

Rotary

21. ELEVATIONS (Show whether DF, RT, GR, etc.)

6363' G.L.

22. APPROX. DATE WORK WILL START*

Summer, 1982

23. PROPOSED CASING AND CEMENTING PROGRAM

SIZE OF HOLE	SIZE OF CASING	WEIGHT PER FOOT	SETTING DEPTH	QUANTITY OF CEMENT
12-1/4	8-5/8"	20 #/ft	200	175 sx
7-7/8"	4-1/2"	10.5 #/ft	5920	875 sx.

Propose to drill 12-1/4" hole to 200 ft., set 200 ft. of 8-5/8" 20 #/ft. new surface casing w/175 sx Class 'B' 2% CACL₂. Will drill 7-7/8" hole to TD and run open hole logs. If logs appear productive will run 4-1/2", K-55, 10.5 #/ft. new casing to TD and 2 stage cement 1st stage 175 sx Class 'H' 2% gel to cover Gallup. Stage tool below Point Lookout @ 4700' est. 2nd stage 600 sx Class 'B' w/2% D-79 followed by 100 sx Class 'H' 2% gel. Will bring cement above Ojo Alamo. Drilling mud will be low water loss gel, fresh water, starch. Will perforate and frac as necessary. Blowout prevention equipment will be 10" 900 series double ram.

ESTIMATED TOPS

San Jose	Surface
Ojo Alamo	1565'
Pictured Cliffs	2010'
Mesa Verde	3650'
Gallup	5506'

IN ABOVE SPACE DESCRIBE PROPOSED PROGRAM: If proposal is to deepen or plug back, give data on present productive zone and proposed new productive zone. If proposal is to drill or deepen directionally, give pertinent data on subsurface locations and measured and true vertical depths. Give blowout preventer program, if any.

24.

SIGNED

TITLE

Operations Manager

DATE

7/19/82

(This space for Federal or State office use)

PERMIT NO.

APPROVAL DATE

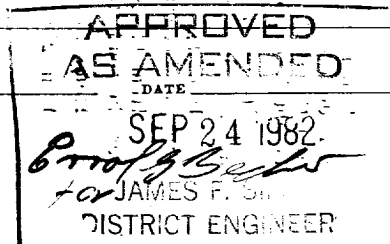
APPROVED BY

TITLE

CONDITIONS OF APPROVAL, IF ANY:

ok 7

NMCC



All distances must be from the outer boundaries of the Section.

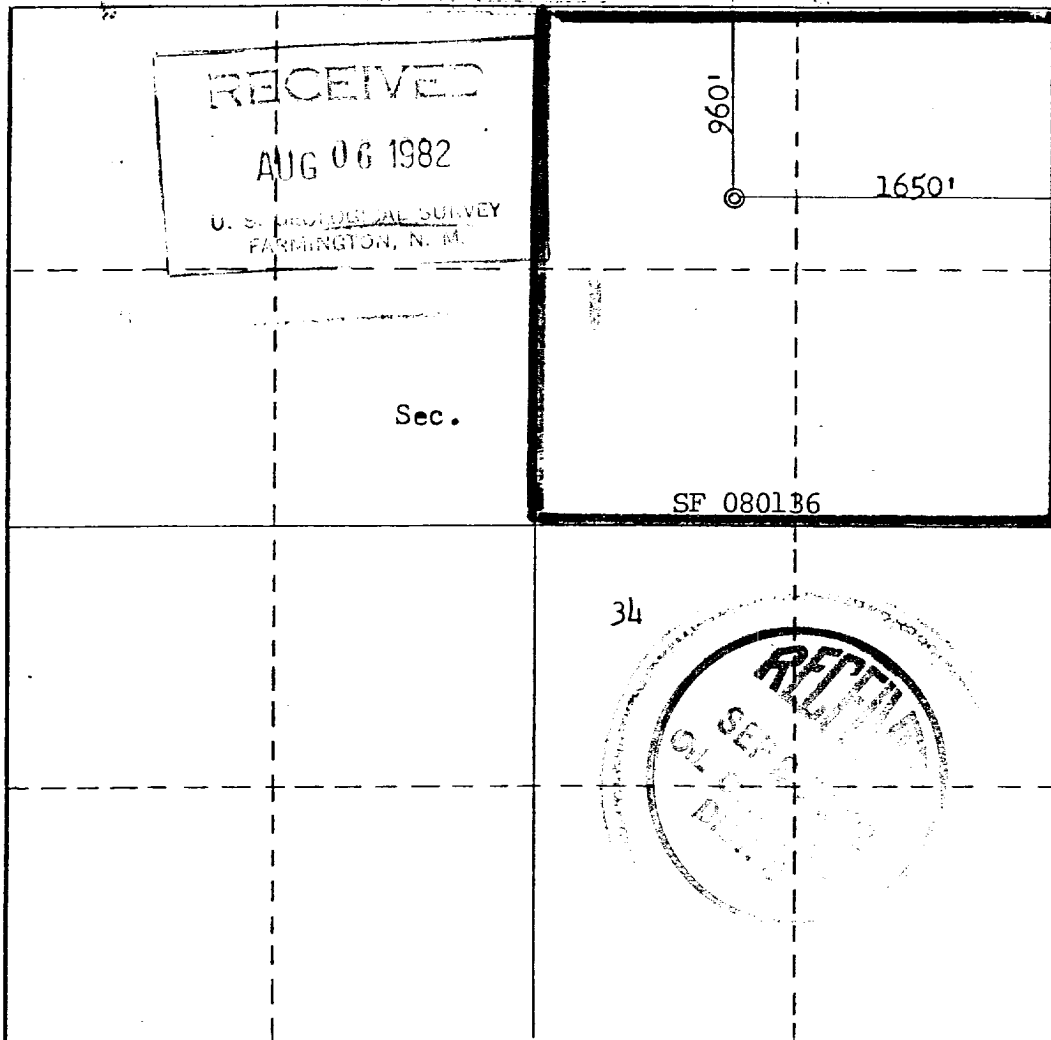
Operator MERRION OIL & GAS CORPORATION			Lease SALAZAR "G" 34		Well No. 4
Unit Letter B	Section 34	Township 25N	Range 6W	County RIO ARriba	
Actual Footage Location of Well: 960 feet from the North line and 1650 feet from the East line					
Ground Level Elev. 6363	Producing Formation Gallup	Pool Devils Fork Gallup Ext.		Dedicated Acreage: 160 Acres	

1. Outline the acreage dedicated to the subject well by colored pencil or hachure marks on the plat below.
2. If more than one lease is dedicated to the well, outline each and identify the ownership thereof (both as to working interest and royalty).
3. If more than one lease of different ownership is dedicated to the well, have the interests of all owners been consolidated by communitization, unitization, force-pooling, etc?

☐ Yes ☐ No If answer is "yes," type of consolidation _____

If answer is "no," list the owners and tract descriptions which have actually been consolidated. (Use reverse side of this form if necessary.) _____

No allowable will be assigned to the well until all interests have been consolidated (by communitization, unitization, forced-pooling, or otherwise) or until a non-standard unit, eliminating such interests, has been approved by the Commission.



CERTIFICATION

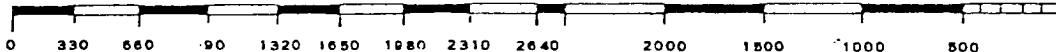
I hereby certify that the information contained herein is true and complete to the best of my knowledge and belief.

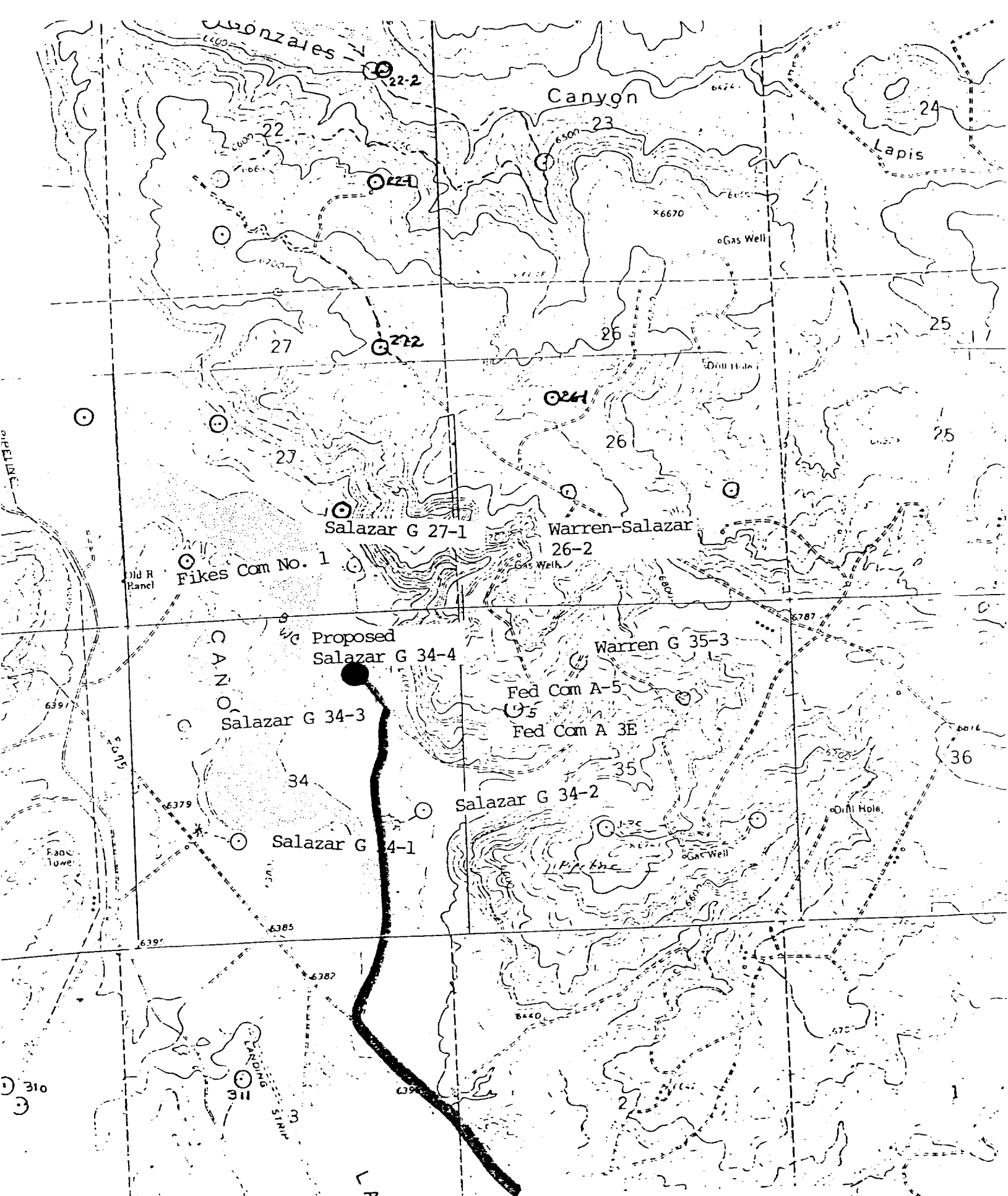
Name
Steve S. Dunn
Position
Operations Manager
Company
Merrion Oil & Gas Corp.
Date
7/19/82

I hereby certify that the well location shown on this plat was plotted from field notes of actual surveys made by me or under my supervision, and that the same is true and correct to the best of my knowledge and belief.

Date Surveyed
June 21, 1982
Registered Professional Engineer and/or Land Surveyor
Fred B. Kerr, Jr.

Certificate No.
3950





Vicinity Map for
Merrion Oil & Gas Corp. #34-4 Salazar G
960'FN 1650'FE Sec 34-25N-6W
Rio Arriba County New Mexico

Existing Road: —
New Road: - - -