

UNITED STATES
DEPARTMENT OF THE INTERIOR
GEOLOGICAL SURVEY

APPLICATION FOR PERMIT TO DRILL, DEEPEN, OR PLUG BACK

1a. TYPE OF WORK

DRILL ☒DEEPEN ☐PLUG BACK ☐

b. TYPE OF WELL

OIL
WELL ☒GAS
WELL ☐OTHER ☐SINGLE
ZONE ☒MULTIPLE
ZONE ☐

2. NAME OF OPERATOR

Merrion Oil & Gas Corporation

3. ADDRESS OF OPERATOR

P. O. Box 1017, Farmington, New Mexico 87499

4. LOCATION OF WELL (Report location clearly and in accordance with State requirements*)

At surface

1840' FSL and 1805' FEL

At proposed prod. zone

Same

14. DISTANCE IN MILES AND DIRECTION FROM NEAREST TOWN OR POST OFFICE*

13 miles NE of Counselors, New Mexico

15. DISTANCE FROM PROPOSED*

LOCATION TO NEAREST
PROPERTY OR LEASE LINE, FT.
(Also to nearest drlg. unit line, if any)

1805'

16. NO. OF ACRES IN LEASE

80

17. NO. OF ACRES ASSIGNED
TO THIS WELL

160

18. DISTANCE FROM PROPOSED LOCATION*
TO NEAREST WELL, DRILLING, COMPLETED,
OR APPLIED FOR, ON THIS LEASE, FT.

N/A

19. PROPOSED DEPTH

6015'

20. ROTARY OR CABLE TOOLS

Rotary

21. ELEVATIONS (Show whether DF, RT, GR, etc.)

6382' GL

22. APPROX. DATE WORK WILL START*

As soon as possible

23. PROPOSED CASING AND CEMENTING PROGRAM

SIZE OF HOLE	SIZE OF CASING	WEIGHT PER FOOT	SETTING DEPTH	QUANTITY OF CEMENT
12-1/4"	8-5/8" J33	20 #/ft.	200'	175 sx (206.50 cu. ft.)
7-7/8"	4-1/2" J33	10.5 #/ft.	6015'	875 sx (1571.50 cu. ft.)

Will drill 12-1/4" hole to 200' and set 200' of 8-5/8" 20# new casing w/ 175 sx cement (206.50 cu. ft.). Will drill 7-7/8" hole to TD and run open hole logs. If appears productive, will run 6015' of 4-1/2" 10.5 #/ft. new casing and 2-stage cement. 1st Stage 175 sx (213.50 cu. ft.) Class H 2% Gel to cover Gallup. Stage tool below Point Lookout @ 4720'. 2nd Stage 600 sx (1236 cu. ft.) Class B w/ 2% D-79 followed by 100 sx (122 cu. ft.) Class H 2% Gel. Will bring cement above Ojo. Drilling mud will be low water loss get, fresh water, starch. Will perforate and frac as necessary. Blowout prevention by 10" 900 series double ram.

ESTIMATED TOPS

Ojo Alamo
Picture Cliffs
Mesa Verde
Gallup1640'
2295'
3855'
5615'

RECEIVED

JAN 7 1983

OIL CON. DIV.]

DIST. 3

IN ABOVE SPACE DESCRIBE PROPOSED PROGRAM: If proposal is to deepen or plug back, give data on present productive zone and new productive zone. If proposal is to drill or deepen directionally, give pertinent data on subsurface locations and measured and true vertical depths. Give blowout prevention program, if any.

24.

SIGNED

TITLE

Operations Manager

DATE

12/1/82

(This space for Federal or State office use)

PERMIT NO.

APPROVAL DATE

APPROVED BY

TITLE

DATE

CONDITIONS OF APPROVAL, IF ANY:

DRILLING OPERATIONS AUTHORIZED ARE
SUBJECT TO COMPLIANCE WITH ATTACHED
"GENERAL REQUIREMENTS"

NMOCC

This action is subject to administrative
appeal pursuant to 30 CFR 290.JAMES F. SIMS
DISTRICT ENGINEER

All distances must be from the outer boundaries of the Section.

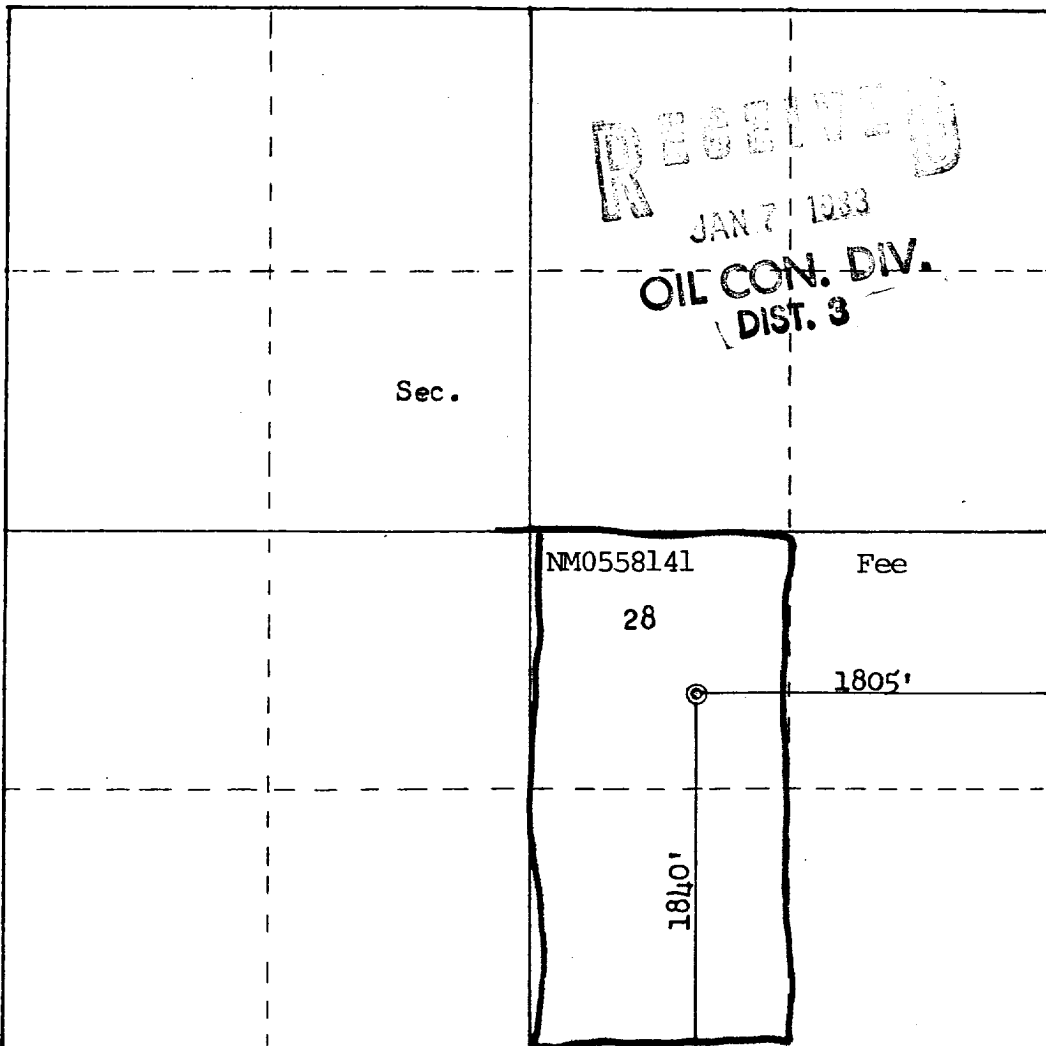
Operator MERRION OIL & GAS CORPORATION			Lease OLD ROCK COM		Well No. 3
Unit Letter J	Section 28	Township 25N	Range 6W	County Rio Arriba	
Actual Footage Location of Well: 1840 feet from the South line and 1805 feet from the East line					
Ground Level Elev: 6382	Producing Formation Gallup		Pool Devils Fork Gallup Assoc. Ext.	Dedicated Acreage: 160 Acres	

1. Outline the acreage dedicated to the subject well by colored pencil or hachure marks on the plat below.
2. If more than one lease is dedicated to the well, outline each and identify the ownership thereof (both as to working interest and royalty).
3. If more than one lease of different ownership is dedicated to the well, have the interests of all owners been consolidated by communitization, unitization, force-pooling, etc?

☒ Yes ☐ No If answer is "yes," type of consolidation Communitized

If answer is "no," list the owners and tract descriptions which have actually been consolidated. (Use reverse side of this form if necessary.)

No allowable will be assigned to the well until all interests have been consolidated (by communitization, unitization, forced-pooling, or otherwise) or until a non-standard unit, eliminating such interests, has been approved by the Commission.



Scale: 1"=1000'

CERTIFICATION

I hereby certify that the information contained herein is true and complete to the best of my knowledge and belief.

Name
Steve S. Dunn

Position
Operations Manager

Company
Merrion Oil & Gas Corp.

Date
12/1/82

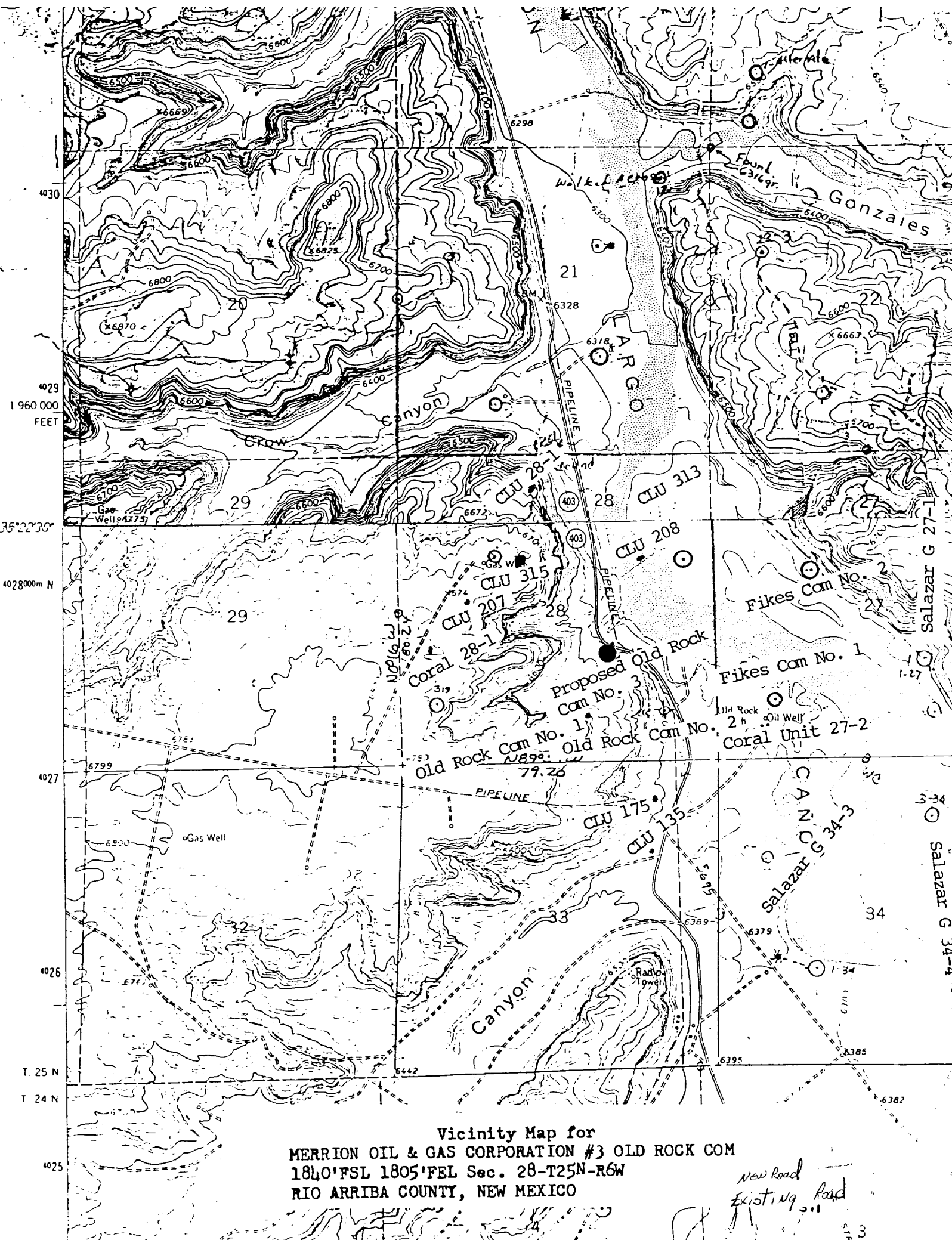
I hereby certify that the well location shown on this plat was plotted from field notes of actual surveys made by me or under my supervision, and that the same is true and correct to the best of my knowledge and belief.

Date Surveyed
November 19, 1982

Registered Professional Engineer and Land Surveyor

Fred B. Kerr Jr.

Certificate No. **3950**



Vicinity Map for
MERRION OIL & GAS CORPORATION #3 OLD ROCK COM
1840'FSL 1805'FEL Sec. 28-T25N-R6W
RIO ARriba COUNTY, NEW MEXICO

New Road
Existing Road