

UNITED STATES
DEPARTMENT OF THE INTERIOR
GEOLOGICAL SURVEY

30039-23137

APPLICATION FOR PERMIT TO DRILL, DEEPEN, OR PLUG BACK

1a. TYPE OF WORK

DRILL ☒

DEEPEN ☐

PLUG BACK ☐

b. TYPE OF WELL

OIL WELL ☐

GAS WELL ☒

OTHER

SINGLE ZONE ☐

MULTIPLE ZONE ☒

2. NAME OF OPERATOR

Ladd Petroleum Corporation

3. ADDRESS OF OPERATOR

830 Denver Club Bldg. Denver, Colorado 80202

4. LOCATION OF WELL (Report location clearly and in accordance with any State requirements)

At surface 1700' FSL, 1580' FWL, Section 4-T-26N-R7W

At proposed prod. zone same

RECEIVED

OCT 25 1982 K

14. DISTANCE IN MILES AND DIRECTION FROM NEAREST TOWN OR POST OFFICE*

Approximately 30 Miles SE of Blanco, New Mexico

15. DISTANCE FROM PROPOSED*

LOCATION TO NEAREST PROPERTY OR LEASE LINE, FT.
(Also to nearest drlg. unit line, if any)

950'

16. NO. OF ACRES ASSIGNED TO THIS WELL

2561.04

18. DISTANCE FROM PROPOSED LOCATION*

TO NEAREST WELL, DRILLING, COMPLETED, OR APPLIED FOR, ON THIS LEASE, FT.

800'

19. PROPOSED DEPTH

7000'

20. ROTARY OR CABLE TOOLS

Rotary

21. ELEVATIONS (Show whether DF, RT, GR, etc.)

6067' GR 6574' GL

22. APPROX. DATE WORK WILL START*

December 1982

23. PROPOSED CASING AND CEMENTING PROGRAM

All casing is new.

SIZE OF HOLE	SIZE OF CASING	WEIGHT PER FOOT	SETTING DEPTH	QUANTITY OF CEMENT
12 1/4"	8 5/8"	24# K-55 ST&C	225'	225 sx Class "B"
7 7/8"	5 1/2"	15.5# K-55 ST&C	7000'	450 sx Class "B" + 575 sx 65/35 Poz

1. Drill 12 1/4" hole and set 8 5/8" casing to 225'.
2. Log BOP checks in daily drilling reports and drill 7 7/8" hole to 7000'.
3. Run test if warranted, and run 5 1/2" casing if productive.
4. Run logs as needed, perforate and stimulate as needed.

EXHIBITS ATTACHED

- "A" Location and elevation plat.
- "B" Ten point compliance program.
- "C" Blowout preventor diagram.
- "D" Multi point requirements for A.P.D.
- "E" "E 1", "E 2"- Access road and topco maps.
- "F" Drill pad/production facilities and cross section plats.

- "G" Drilling rig layout.
- "H" Well location plat.
- "I" Cultural resources report.

IN ABOVE SPACE DESCRIBE PROPOSED PROGRAM: If proposal is to deepen or plug back, give data on present productive zone and proposed new productive zone. If proposal is to drill or deepen directionally, give pertinent data on subsurface locations and measured and true vertical depths. Give blowout preventer program, if any.

24. SIGNED [Signature] TITLE Drilling Engineer DATE Oct. 20, 1982

(This space for Federal or State office use)

PERMIT NO. _____ APPROVAL DATE _____

APPROVED BY _____ TITLE _____

CONDITIONS OF APPROVAL, IF ANY:

*See Instructions On Reverse Side

NMOCC

DEC 31 1982
JAMES F. SIMS
DISTRICT ENGINEER

STATE OF NEW MEXICO
ENERGY AND MINERALS DEPARTMENT

OIL CONSERVATION DIVISION
P. O. BOX 2088
SANTA FE, NEW MEXICO 87501

Form C-102
Revised 10-1-78

All distances must be from the outer boundaries of the Section.

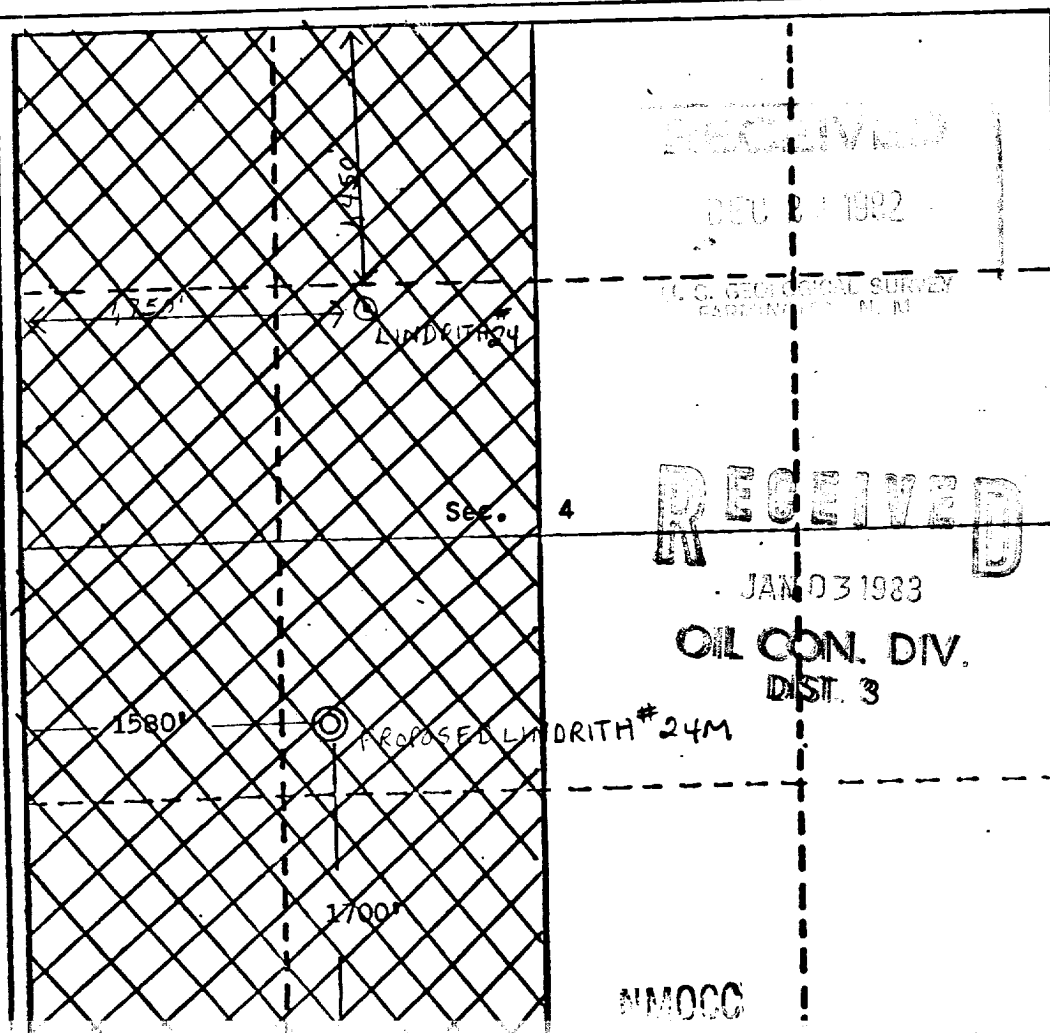
Operator Ladd Petroleum Corporation		Lease Lindrith		Well No. 24M	
Unit Letter K	Section 4	Township 26 North	Range 7 West	County Rio Arriba	
Actual Footage Location of Well:					
1700 feet from the South line and 1580 feet from the West line					
Ground Level Elev. 6574	Producing Formation Dakota/Gallup	Pool Basin Dakota Largo Gallup	Dedicated Acreage: W 320.80 Acres		

1. Outline the acreage dedicated to the subject well by colored pencil or hachure marks on the plat below.
2. If more than one lease is dedicated to the well, outline each and identify the ownership thereof (both as to working interest and royalty).
3. If more than one lease of different ownership is dedicated to the well, have the interests of all owners been consolidated by communitization, unitization, force-pooling, etc?

☐ Yes ☐ No If answer is "yes," type of consolidation _____

If answer is "no," list the owners and tract descriptions which have actually been consolidated. (Use reverse side of this form if necessary.) _____

No allowable will be assigned to the well until all interests have been consolidated (by communitization, unitization, forced-pooling, or otherwise) or until a non-standard unit, eliminating such interests, has been approved by the Division.



CERTIFICATION

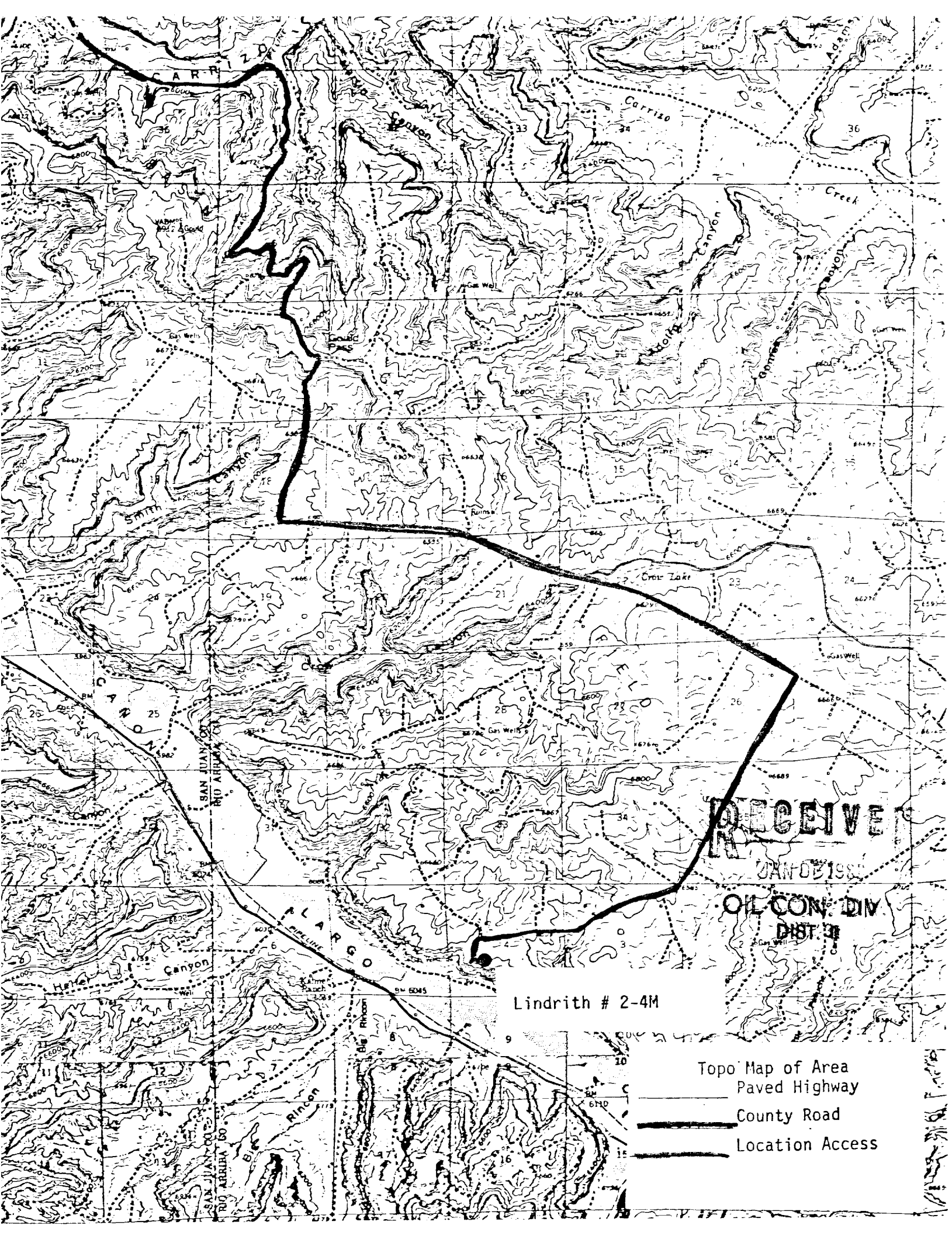
I hereby certify that the information contained herein is true and complete to the best of my knowledge and belief.

Name *J. E. Meyer*
Position Drilling Engineer
Company Ladd Petroleum Corporation
Date November 17, 1982

EDGAR L. RISENHOVER
NEW MEXICO
5978
I hereby certify that the well location is correct and that the same is in accordance with the best of my knowledge and belief.

Date Surveyed
November 12, 1982
Registered Professional Engineer
and/or Land Surveyor

Edgar L. Risenhoover
5979



RECEIVED
JAN 03 1966
OIL CON. DIV.
DIST. 30

Lindrith # 2-4M

Topo Map of Area
Paved Highway
County Road
Location Access