

UNITED STATES  
DEPARTMENT OF THE INTERIOR  
GEOLOGICAL SURVEY

## APPLICATION FOR PERMIT TO DRILL, DEEPEN, OR PLUG BACK

1a. TYPE OF WORK DRILL ☒ DEEPEN ☐ PLUG BACK ☐

b. TYPE OF WELL

OIL WELL ☐ GAS WELL ☒ OTHER ☐SINGLE ZONE ☒MULTIPLE ZONE ☐

2. NAME OF OPERATOR

Amoco Production Company

3. ADDRESS OF OPERATOR

501 Airport Drive, Farmington, New Mexico

4. LOCATION OF WELL (Report location clearly and in accordance with any State requirements.)  
At surface 1650' FSL X 830' FWL  
At proposed prod. zone same

14. DISTANCE IN MILES AND DIRECTION FROM NEAREST TOWN OR POST OFFICE

21 miles North of Counselors, N.M.

15. DISTANCE FROM PROPOSED\*

LOCATION TO NEAREST  
PROPERTY OR LEASE LINE, FT.  
(Also to nearest drig. unit line, if any)

830'

18. DISTANCE FROM PROPOSED LOCATION\*  
TO NEAREST WELL, DRILLING, COMPLETED,  
OR APPLIED FOR, ON THIS LEASE, FT.16. NO. OF ACRES IN LEASE  
2559.1619. PROPOSED DEPTH  
8160'17. NO. OF ACRES ASSIGNED  
TO THIS WELL

W 320 319.81

20. ROTARY OR CABLE TOOLS

Rotary

21. ELEVATIONS (Show whether DF, RT, GR, etc.)

7074'

DRILLING OPERATIONS AUTHORIZED ARE

SUBJECT TO COMPLIANCE WITH ATTACHED

GENERAL REG.

PROPOSED CASING AND CEMENTING PROGRAM

22. APPROX. DATE WORK WILL START\*

As soon as permitted  
This action is subject to administrative  
appeal pursuant to 30 CFR 290.

SIZE OF HOLE	SIZE OF CASING	WEIGHT PER FOOT	SETTING DEPTH	
12 1/4"	9 5/8"	32.3# H40	300'	472 Ft. Class 'B' neat w/2% CaCl <sub>2</sub>
8 3/4"	7"	20# K55	3950'	(1)
6 1/4"	4 1/2"	10.5# K55	8160'	(2)

(1) 890 Ft.<sup>3</sup> of Class 'B' 65:35 POZ, Tail-in w/ 118 Ft.<sup>3</sup> of Class 'B' neat2) 1st stage - 215 Ft.<sup>3</sup> of Class 'B' 50:50 POZ, Tail in w/118 Ft.<sup>3</sup> of Class 'B' neat  
2nd stage - 300 Ft.<sup>3</sup> of Class 'B' 65:35 POZ, Tail-in w/118 Ft.<sup>3</sup> of Class 'B' neat.

Amoco proposes to drill the above well to further develop the Basin Dakota reservoir. The well will be drilled to the surface casing point using native mud, to 3750' using a low solids non-dispersed mud system and to TD using gas. Completion design will be based on open hole logs. A copy of all logs will be filed upon completion. Amoco's standard blowout prevention will be employed; see attached drawing for blowout preventer design.

The gas produced from this well is not dedicated to a gas sales contract.

IN ABOVE SPACE DESCRIBE PROPOSED PROGRAM: If proposal is to deepen or plug back, give data on present productive zone and proposed new productive zone. If proposal is to drill or deepen directionally, give pertinent data on subsurface locations and measured and true vertical depths. Give blowout prevention program, if any.

24. SIGNED D. HOEMAKE TITLE District Engineer

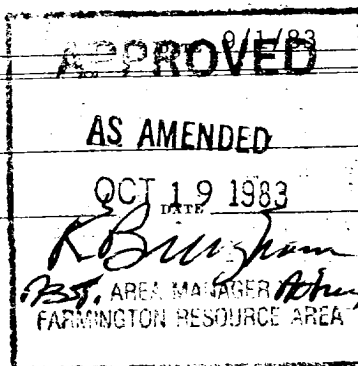
(This space for Federal or State office use)

PERMIT NO.

APPROVED BY AS  
CONDITIONS OF APPROVAL, IF ANY:

RECEIVED

OCT 21 1983

OIL CON. DIV.  
DIST. 3  
NMOC

## OIL CONSERVATION DIVISION

P. O. BOX 2088

SANTA FE, NEW MEXICO 87501

Form C-107  
Revised 10-1-78

STATE OF NEW MEXICO

ENERGY AND MINERALS DEPARTMENT

All distances must be from the outer boundaries of the Section.

Operator: <b>AMOCO PRODUCTION COMPANY</b>			Lease: <b>JICARILLA APACHE TRIBAL 151</b>		Well No.: <b>4E</b>
Unit Letter: <b>L</b>	Section: <b>3</b>	Township: <b>26N</b>	Range: <b>5W</b>	County: <b>Rio Arriba</b>	
Actual Footage Location of Well: <b>1650</b> feet from the <b>South</b> line and <b>790</b> feet from the <b>West</b> line					
Ground Level Elev.: <b>7075</b>	Producing Formation: <b>Dakota</b>		Pool: <b>Basin Dakota</b>		Dedicated Acreage: <b>320</b> Acres

1. Outline the acreage dedicated to the subject well by colored pencil or hachure marks on the plat below.

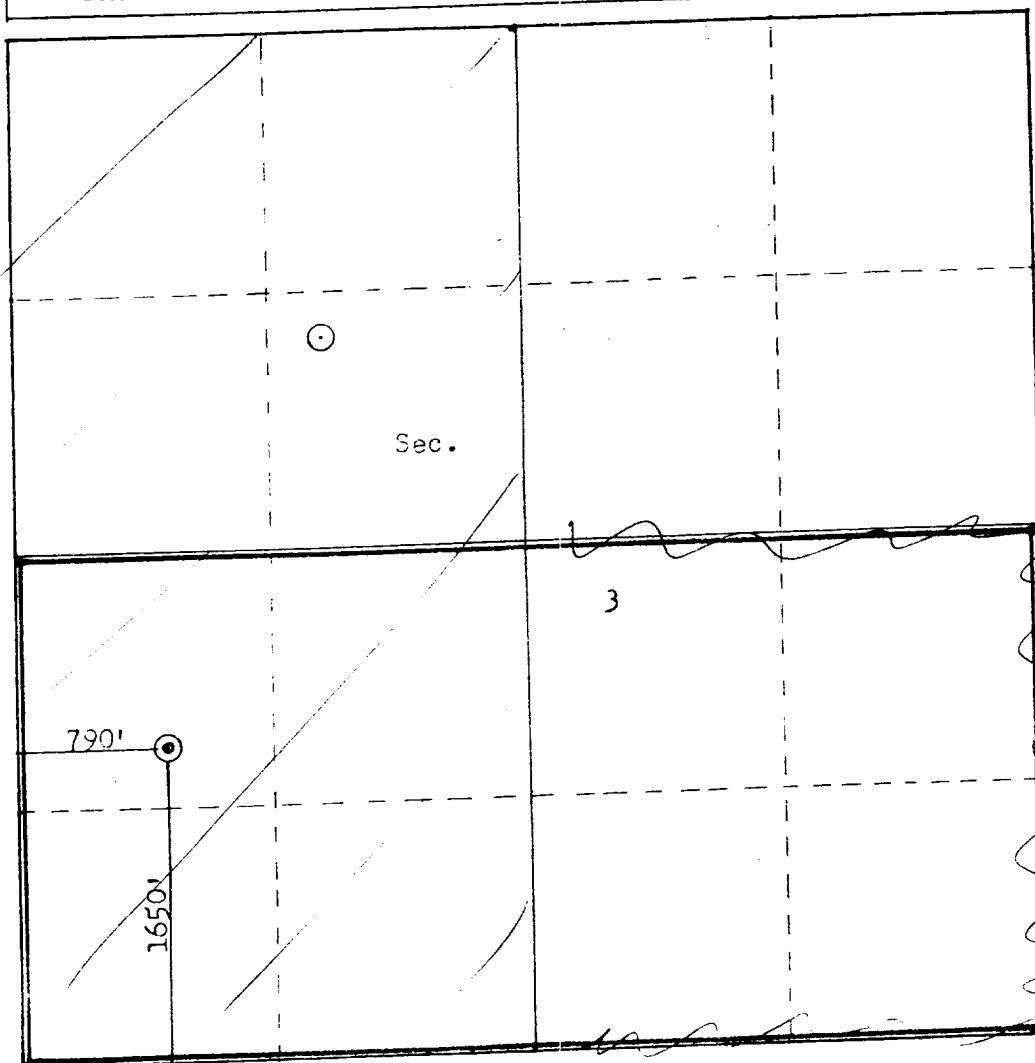
2. If more than one lease is dedicated to the well, outline each and identify the ownership thereof (both as to working interest and royalty).

3. If more than one lease of different ownership is dedicated to the well, have the interests of all owners been consolidated by communitization, unitization, force-pooling, etc?

☐ Yes ☐ No If answer is "yes," type of consolidation \_\_\_\_\_

If answer is "no," list the owners and tract descriptions which have actually been consolidated. (Use reverse side of this form if necessary.) \_\_\_\_\_

No allowable will be assigned to the well until all interests have been consolidated (by communitization, unitization, forced-pooling, or otherwise) or until a non-standard unit, eliminating such interests, has been approved by the Commission.



## CERTIFICATION

I hereby certify that the information contained herein is true and complete to the best of my knowledge and belief.

Original Signed By

Name **D. H. SHOEMAKER****Dale H. Shoemaker**

Position

**District Engineer**

Company

**Amoco Production Company**

Date

**September 13, 1983**

I hereby certify that the well location shown on this plat was plotted from field notes of actual surveys made by me or under my supervision, and that the same is true and correct to the best of my knowledge and belief.

Date Surveyed **Re-issued****September 9, 1983**

Registered Professional Engineer and Land Surveyor

**Fred B. Kerr Jr.**Certificate No. **3950**