

UNITED STATES  
DEPARTMENT OF THE INTERIOR  
GEOLOGICAL SURVEY

## APPLICATION FOR PERMIT TO DRILL, DEEPEN, OR PLUG BACK

1a. TYPE OF WORK DRILL ☒ DEEPEN ☐ PLUG BACK ☐b. TYPE OF WELL  
OIL WELL ☐ GAS WELL ☒ OTHER ☐ SINGLE ZONE ☒ MULTIPLE ZONE ☐

2. NAME OF OPERATOR

Amoco Production Company

3. ADDRESS OF OPERATOR

501 Airport Drive Farmington, New Mexico

4. LOCATION OF WELL (Report location clearly and in accordance with any State requirements.)  
At surface 1520' FSL X 1850' FEL

At proposed prod. zone SAME

14. DISTANCE IN MILES AND DIRECTION FROM NEAREST TOWN OR POST OFFICE\*

21 miles North of Counselor, New Mexico

15. DISTANCE FROM PROPOSED\*  
LOCATION TO NEAREST  
PROPERTY OR LEASE LINE, FT.  
(Also to nearest drlg. unit line, if any) 1520'16. NO. OF ACRES IN LEASE  
2559.1617. NO. OF ACRES ASSIGNED  
TO THIS WELL

320 E 319.79

18. DISTANCE FROM PROPOSED LOCATION\*  
TO NEAREST WELL, DRILLING, COMPLETED,  
OR APPLIED FOR, ON THIS LEASE, FT.19. PROPOSED DEPTH  
8100'

20. ROTARY OR CABLE TOOLS

Rotary

21. ELEVATIONS (Show whether DF, RT, GR, etc.)

6904'

DRILLING OPERATIONS AUTHORIZED ARE  
SUBJECT TO COMPLIANCE WITH ATTACHED

22. APPROX. DATE WORK WILL START\*

As soon as permitted

23.

PROPOSED CASING AND CEMENTING PROGRAM

This action is subject to administrative  
appeal pursuant to 30 CFR 290;  
QUANTITY OF CEMENT

SIZE OF HOLE	SIZE OF CASING	WEIGHT PER FOOT	SETTING DEPTH	QUANTITY OF CEMENT
12 1/4 "	9 5/8"	32.3# H40	300'	472ft. Class 'B' neat w/2% CaCl <sub>2</sub>
8 3/4"	7"	20# K55	3775'	(1)
6 1/4"	4 1/2"	10.5# K-55	8100'	(2)

(1) 890Ft. <sup>3</sup> of Class 'B' 65:35 POZ, Tail-in w/118 Ft. <sup>3</sup> of Class 'B' neat(2) 1st stage - 215 Ft. <sup>3</sup> of Class 'B' 50:50 :OZ, Tail in w/118 Ft. <sup>3</sup> of Class 'B' neat  
2nd stage - 300 Ft. <sup>3</sup> of Class 'B' 65:35 POZ, Tail -in w/118 Ft. of Class 'B' neat.

Amoco proposes to drill the above well to further develop the Basin Dakota reservoir. The well will be drilled to the surface casing point using native mud, to 3750' using a low solids non-dispersed mud system and to TD using gas. Completion design will be based on open hole logs. A copy of all logs will be filed upon completion. Amoco's standard blowout prevention will be employed; see attached drawing for blowout preventer design.

The gas produced from this well is not dedicated to a gas sales contract.

IN ABOVE SPACE DESCRIBE PROPOSED PROGRAM: If proposal is to deepen or plug back, give data on present productive zone and proposed new productive zone. If proposal is to drill or deepen directionally, give pertinent data on subsurface locations and measured and true vertical depths. Give blowout preventer program, if any.

24.

SIGNED

TITLE District Engineer

(This space for Federal or State office use)

PERMIT NO.

APPROVED BY

CONDITIONS OF APPROVAL, IF ANY:

TITLE

RECEIVED  
OCT 21 1983NMOCC CON. DIV.  
DIST. 3

APPROVED

AS AMENDED

OCT 19 1983

R. Bringham  
AREA MANAGER  
FARMINGTON RESOURCE AREA

OIL CONSERVATION DIVISION

P. O. BOX 2088  
SANTA FE, NEW MEXICO 87501

Form C-107  
Revised 10-1-78

All distances must be from the outer boundaries of the Section.

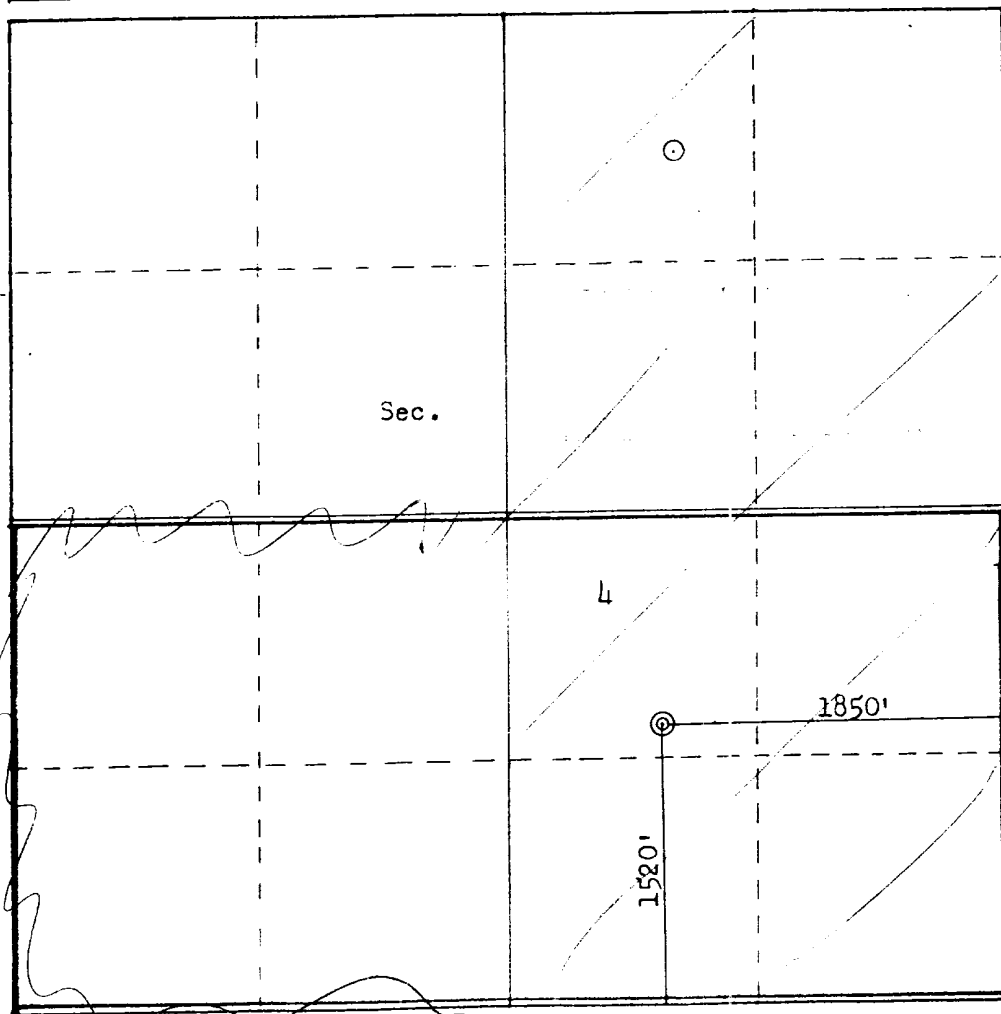
Operator <b>AMOCO PRODUCTION COMPANY</b>			Lease <b>JICARILLA APACHE TRIBAL 151</b>		Well No. <b>3E</b>
Unit Letter <b>J</b>	Section <b>4</b>	Township <b>26N</b>	Range <b>5W</b>	County <b>Rio Arriba</b>	
Actual Footage Location of Well: <b>1520</b> feet from the <b>South</b> line and <b>1850</b> feet from the <b>East</b> line					
Ground Level Elev. <b>6904</b>	Producing Formation <b>Dakota</b>		Pool <b>Basin Dakota</b>		Dedicated Acreage: <b>320</b> Acres

1. Outline the acreage dedicated to the subject well by colored pencil or hachure marks on the plat below.
2. If more than one lease is dedicated to the well, outline each and identify the ownership thereof (both as to working interest and royalty).
3. If more than one lease of different ownership is dedicated to the well, have the interests of all owners been consolidated by communitization, unitization, force-pooling, etc?

☐ Yes ☐ No If answer is "yes," type of consolidation \_\_\_\_\_

If answer is "no," list the owners and tract descriptions which have actually been consolidated. (Use reverse side of this form if necessary.) \_\_\_\_\_

No allowable will be assigned to the well until all interests have been consolidated (by communitization, unitization, forced-pooling, or otherwise) or until a non-standard unit, eliminating such interests, has been approved by the Commission.



CERTIFICATION

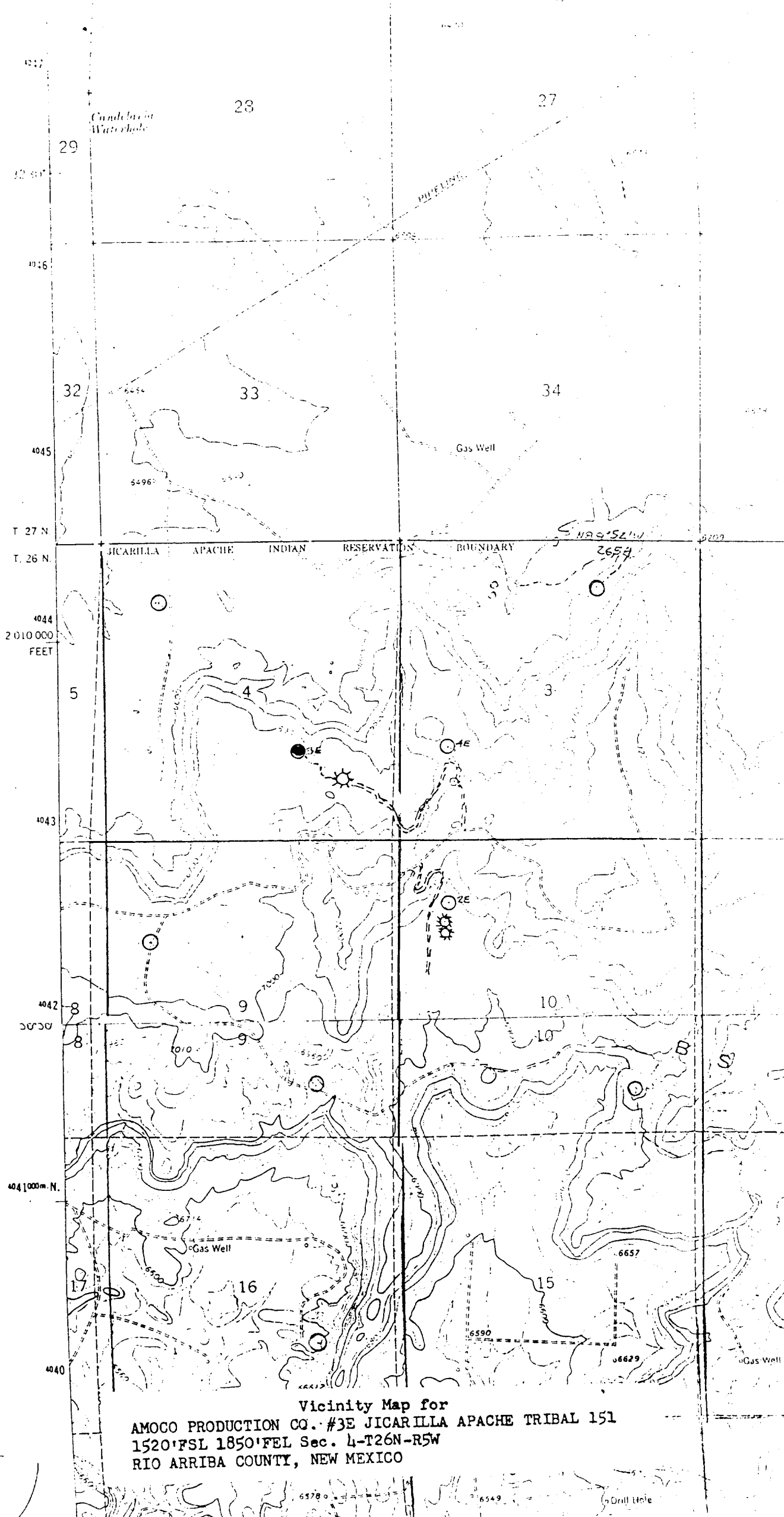
I hereby certify that the information contained herein is true and complete to the best of my knowledge and belief.

Original Signed by  
**D. H. SHOEMAKER**

Name  
**Dale H. Shoemaker**  
Position  
**District Engineer**  
Company  
**Amoco Production Company**  
Date  
**9/1/83**

I hereby certify that the well location shown on this plat was plotted from field notes of actual surveys made by me or under my supervision, and that the same is true and correct to the best of my knowledge and belief.

Date Surveyed  
**May 10, 1983**  
Registered Professional Engineer and Land Surveyor  
**Fred B. Kerr Jr.**  
Certificate No. **1950**



Vicinity Map for  
AMOCO PRODUCTION CO. #3E JICARILLA APACHE TRIBAL 151  
1520' FSL 1850' FEL Sec. 4-T26N-R5W  
RIO ARriba COUNTY, NEW MEXICO