

UNITED STATES  
DEPARTMENT OF THE INTERIOR  
GEOLOGICAL SURVEY

30-039-23369

APPLICATION FOR PERMIT TO DRILL, DEEPEN, OR PLUG BACK

1a. TYPE OF WORK  
DRILL ☒ DEEPEN ☐ PLUG BACK ☐

b. TYPE OF WELL  
OIL WELL ☐ GAS WELL ☒ OTHER ☐ SINGLE ZONE ☒ MULTIPLE ZONE ☐

2. NAME OF OPERATOR  
Tenneco Oil Company

3. ADDRESS OF OPERATOR  
P.O. Box 3249, Englewood, CO 80155

4. LOCATION OF WELL (Report location clearly and in accordance with any State requirements.)  
At surface 1810' FNL, 1670' FEL

At proposed prod. zone

BUREAU OF LAND MANAGEMENT

14. DISTANCE IN MILES AND DIRECTION FROM NEAREST TOWN OR FOREST RESERVE OR RESOURCE AREA

Approximately 9 mi NE of Nageezi, NM

15. DISTANCE FROM PROPOSED\* LOCATION TO NEAREST PROPERTY OR LEASE LINE, FT.  
(Also to nearest drlg. unit line, if any) 1670'

16. NO. OF ACRES IN LEASE  
641.61

17. NO. OF ACRES ASSIGNED TO THIS WELL  
160

18. DISTANCE FROM PROPOSED LOCATION\* TO NEAREST WELL, DRILLING, COMPLETED, OR APPLIED FOR, ON THIS LEASE, FT.  
+ 3270'

20. ROTARY OR CABLE TOOLS  
Rotary

21. ELEVATIONS (Show whether DF, RT, GR, etc.)  
6446' GR

DRILLING OPERATIONS AUTHORIZED ARE  
SUBJECT TO COMPLIANCE WITH ATTACHED  
GENERAL REQUIREMENTS

22. APPROX. DATE WORK WILL START\*  
ASAP

23. This action is subject to administrative appeal pursuant to 30 CFR 290.

SIZE OF HOLE	SIZE OF CASING	WEIGHT PER FOOT	SETTING DEPTH	QUANTITY OF CEMENT
9-7/8"	7-5/8"	26.4#	+ 260'	Circ to surface
6-3/4"	2-7/8"	6.5#	+ 3270'	Circ to surface

See Attached.

The gas is dedicated.

RECEIVED  
JAN 09 1984  
OIL CON. DIV.  
DIST. 3

IN ABOVE SPACE DESCRIBE PROPOSED PROGRAM: If proposal is to deepen or plug back, give data on present productive zone and proposed new productive zone. If proposal is to drill or deepen directionally, give pertinent data on subsurface locations and measured and true vertical depths. Give blowout preventer program if any.

24. SIGNED [Signature] TITLE Production Analyst

(This space for Federal or State office use)

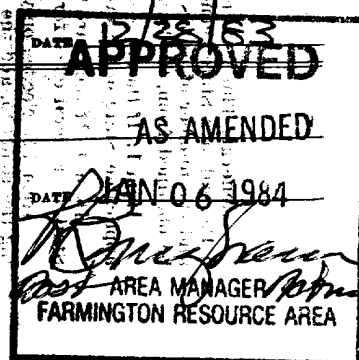
PERMIT NO. \_\_\_\_\_ APPROVAL DATE \_\_\_\_\_

APPROVED BY \_\_\_\_\_ TITLE \_\_\_\_\_

CONDITIONS OF APPROVAL, IF ANY:

oh S

NMOCC



All distances must be from the outer boundaries of the Section.

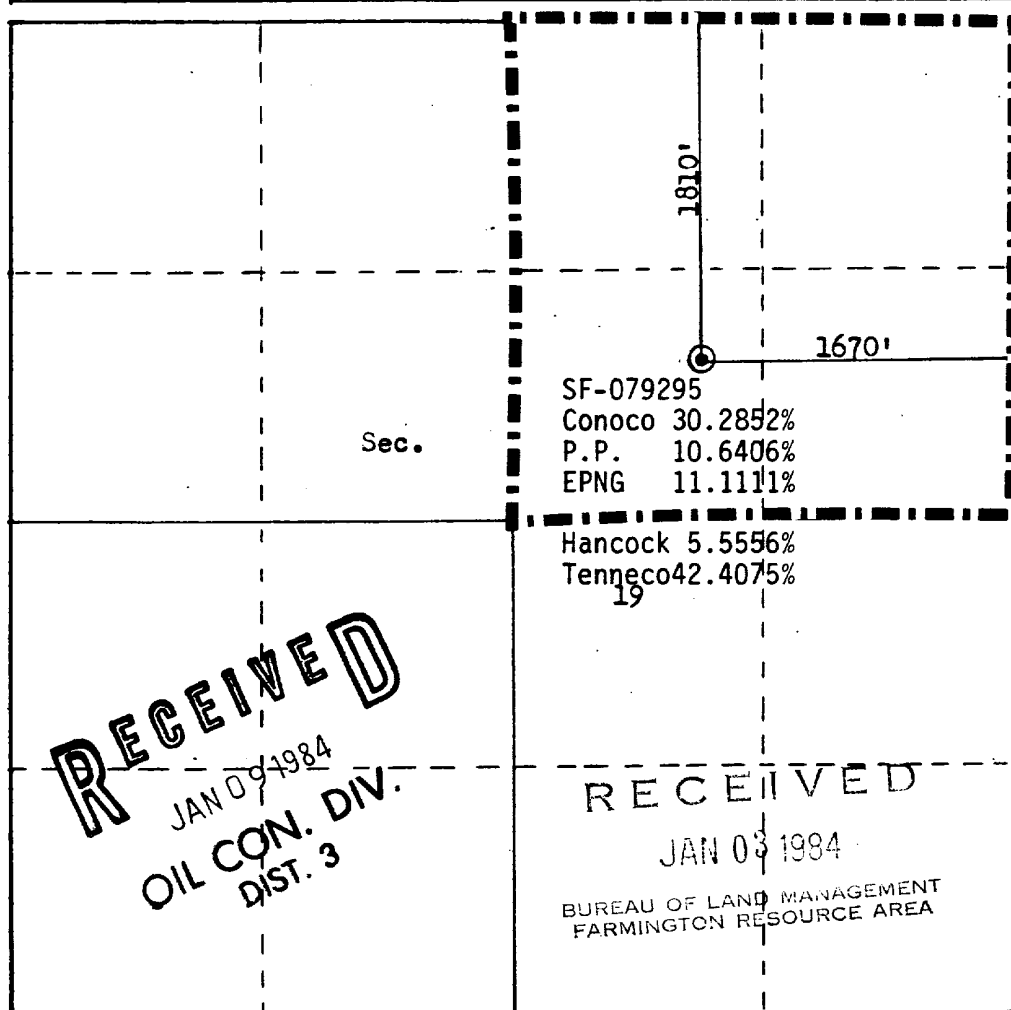
Operator <b>TENNECO OIL COMPANY</b>			Lease <b>REAMES</b>		Well No. <b>5</b>
Unit Letter <b>G</b>	Section <b>19</b>	Township <b>26N</b>	Range <b>6W</b>	County <b>Rio Arriba</b>	
Actual Footage Location of Well: <b>1810</b> feet from the <b>North</b> line and <b>1670</b> feet from the <b>East</b> line					
Ground Level Elev. <b>6446</b>	Producing Formation <b>Chacra</b>	Pool <b>Otero Chacra</b>		Dedicated Acreage: <b>160</b> Acres	

1. Outline the acreage dedicated to the subject well by colored pencil or hatchure marks on the plat below.
2. If more than one lease is dedicated to the well, outline each and identify the ownership thereof (both as to working interest and royalty).
3. If more than one lease of different ownership is dedicated to the well, have the interests of all owners been consolidated by communitization, unitization, force-pooling, etc?

☐ Yes ☐ No If answer is "yes," type of consolidation \_\_\_\_\_

If answer is "no," list the owners and tract descriptions which have actually been consolidated. (Use reverse side of this form if necessary.) \_\_\_\_\_

No allowable will be assigned to the well until all interests have been consolidated (by communitization, unitization, forced-pooling, or otherwise) or until a non-standard unit, eliminating such interests, has been approved by the Commission.

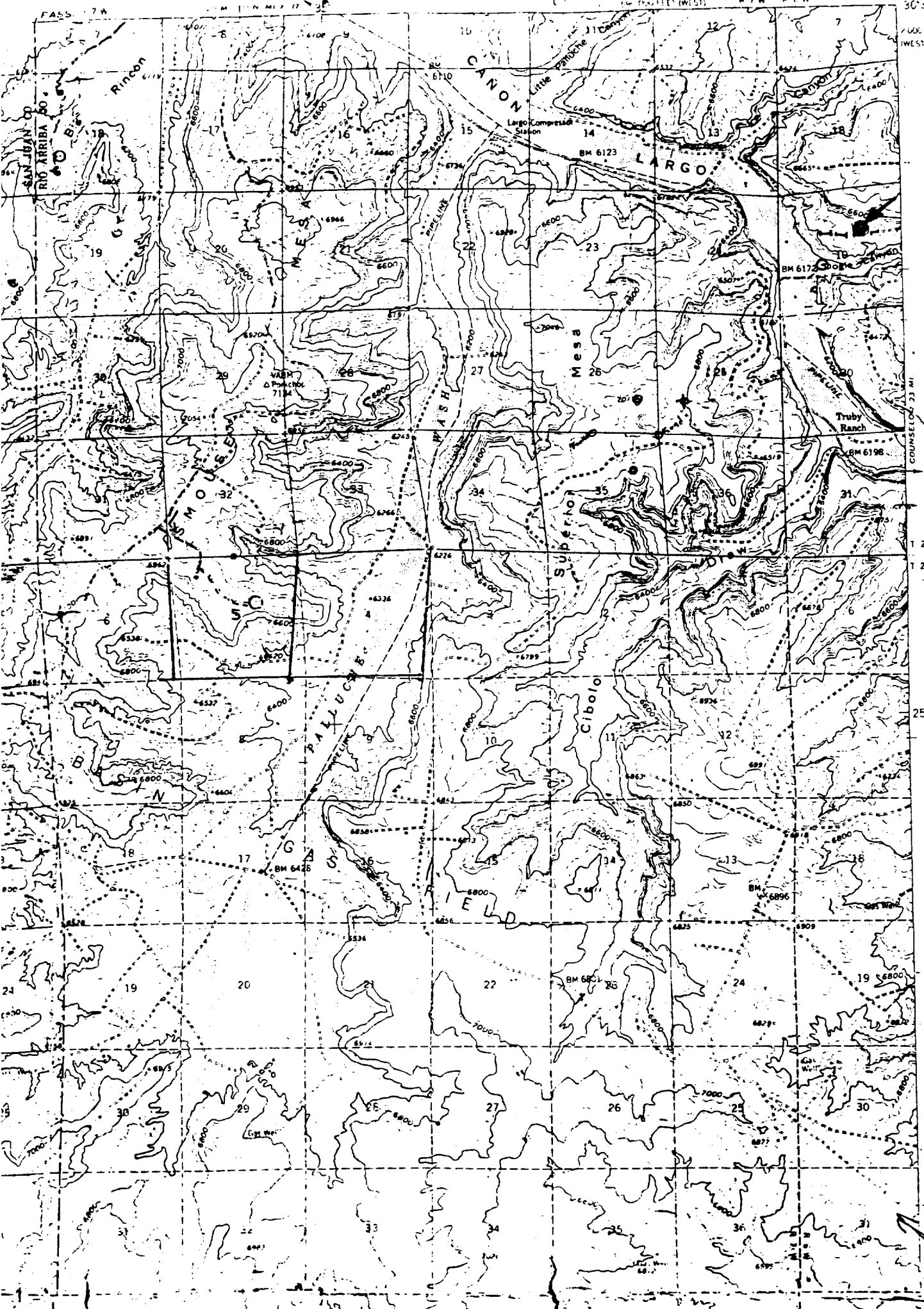


**RECEIVED**  
JAN 09 1984  
OIL CON. DIV.  
DIST. 3

**RECEIVED**  
JAN 03 1984  
BUREAU OF LAND MANAGEMENT  
FARMINGTON RESOURCE AREA

Scale: 1"=1000'

<b>CERTIFICATION</b>	
I hereby certify that the information contained herein is true and complete to the best of my knowledge and belief.	
Name	<b>Denise Wilson</b>
Position	<b>Production Analyst</b>
Company	<b>Tenneco Oil Company</b>
Date	<b>September 2, 1983</b>
I hereby certify that the well location shown on this plat was plotted from field notes of actual surveys made by me or under my supervision, and that the same is true and correct to the best of my knowledge and belief.	
Date Surveyed	<b>August 16, 1983</b>
Registered Professional Engineer and Land Surveyor	<b>Fred B. Kerr Jr.</b>
Certificate No.	<b>3950</b>



Vicinity Map for  
TENNECO OIL COMPANY #5 REAMES  
1810'FNL 1670'FEL Sec. 19-T26N-R6W  
RIO ARRIBA COUNTY, NEW MEXICO

OIL CON. DIV.  
DIST. 3

JAN 09 1984

RECEIVED

Rockhouse

nyon