

STATE OF NEW MEXICO
ENERGY AND MINERALS DEPARTMENT

OIL CONSERVATION DIVISION

P. O. BOX 2088

SANTA FE, NEW MEXICO 87501

30-039-23388

Form C-101
Revised 10-1-78

NO. OF COPIES RECEIVED	
DISTRIBUTION	
SANTA FE	
FILE	
U.S.G.S.	
LAND OFFICE	
OPERATOR	

5A. Indicate Type of Lease	
STATE <input checked="" type="checkbox"/>	FEE <input type="checkbox"/>
5. State Oil & Gas Lease No.	
E-291-5	

APPLICATION FOR PERMIT TO DRILL, DEEPEN, OR PLUG BACK

1a. Type of Work				7. Unit Agreement Name	
b. Type of Well DRILL <input checked="" type="checkbox"/> DEEPEN <input type="checkbox"/> PLUG BACK <input type="checkbox"/>				8. Farm or Lease Name	
OIL WELL <input checked="" type="checkbox"/> GAS WELL <input type="checkbox"/> OTHER <input type="checkbox"/> SINGLE ZONE <input type="checkbox"/> MULTIPLE ZONE <input type="checkbox"/>				Canyon Largo Unit	
2. Name of Operator Merrion Oil & Gas Corporation				9. Well No.	
3. Address of Operator P. O. BOX 1017, Farmington, New Mexico 87499				335	
4. Location of Well UNIT LETTER <u>F</u> LOCATED <u>1620</u> FEET FROM THE <u>North</u> LINE AND <u>1750</u> FEET FROM THE <u>West</u> LINE OF SEC. <u>32</u> TWP. <u>25N</u> RGE. <u>6W</u> NMPM				10. Field and Pool, or Wildcat Devils Fork Gallup	
				12. County Rio Arriba	
				19. Proposed Depth 6400	
				19A. Formation Gallup	
				20. Rotary or C.T. Rotary	
21. Elevations (Show whether DF, RT, etc.) 6785' GL		21A. Kind & Status Plug. Bond Nationwide		22. Approx. Date Well will start Spring/1984	

23.

PROPOSED CASING AND CEMENT PROGRAM

SIZE OF HOLE	SIZE OF CASING	WEIGHT PER FOOT	SETTING DEPTH	SACKS OF CEMENT	EST. TOP
12-1/4	8-5/8	24 #/ft	200	175 sx	
7-7/8"	4-1/2"	10.5 #/ft	6400	1025 sx	

Will drill 12-1/4" surface hole to 200 ft. and set 200 ft. of 8-5/8", 24 #/ft, J-55 grade casing with 175 sx Class B Cement with 3% CaCl₂. (361 cu. ft.) Will drill 7-7/8" hole to 6400'. Will run open hole logs. No other testing planned. If well appears productive, will run 4 in 6400' of 4-1/2", 10.5 @/ft, J-55 grade casing and stage cement. First stage will cement with 225 sx Class H, 2% gel (1.22 cu. ft./sk yield, 275 cu. ft. cement to cover Gallup interval from TD. Estimated top of cement is 5300'. Will set stage collar at 5150 ft. below Point Lookout Formation. Second Stage will cement with 700 sx Class B 2% C-79, (2.06 cu. ft./sk yield) 1442 cu. ft. cement followed by 100 sx Class H 2% gel (1.22 cu. ft./sk yield) 122 cu. ft. cement to cover Mesaverde, Chacra, Pictured Cliffs, Fruitland and Ojo Alamo. Estimated top of cement is 950 ft.

Drilling circulating medium will be low solids, non dispersed, low water loss mud using bentonite, starch, CMC, and fresh water.

Minimum specifications for pressure control is 10", 900 series Double Ram Blowout Preventer. Will perforate and stimulate as required for completion.

IN ABOVE SPACE DESCRIBE PROPOSED PROGRAM; IF PROPOSAL IS TO DEEPEN OR PLUG BACK, GIVE DATA ON PRESENT PRODUCTIVE ZONE AND PROPOSED NEW PRODUCTIVE ZONE. GIVE BLOWOUT PREVENTER PROGRAM, IF ANY.

I hereby certify that the information above is true and complete to the best of my knowledge and belief.

Signed [Signature] Title Operations Manager Date 2/21/84

(This space for State Use)

APPROVED BY [Signature] TITLE SUPERVISOR DISTRICT # 3 DATE FEB 23 1984

CONDITIONS OF APPROVAL, IF ANY:

APPROVAL EXPIRES 8-23-84
UNLESS DRILLING IS COMMENCED.
SPUD NOTICE MUST BE SUBMITTED
WITHIN 10 DAYS.

ESTIMATED TOPS

Ojo Alamo	1754
Kirtland	1948
Fruitland	2207
Pictured Cliffs	2502
Lewis	2692
Chacra	3237
Cliffhouse	4032
Menefee	4122
Point Lookout	4742
Mancos	4966
Gallup	5898
TD	6400

OIL CONSERVATION DIVISION

STATE OF NEW MEXICO

P. O. BOX 2088

Form C-107

ENERGY AND MINERALS DEPARTMENT

SANTA FE, NEW MEXICO 87501

Revised 10-1-78

All distances must be from the outer boundaries of the Section.

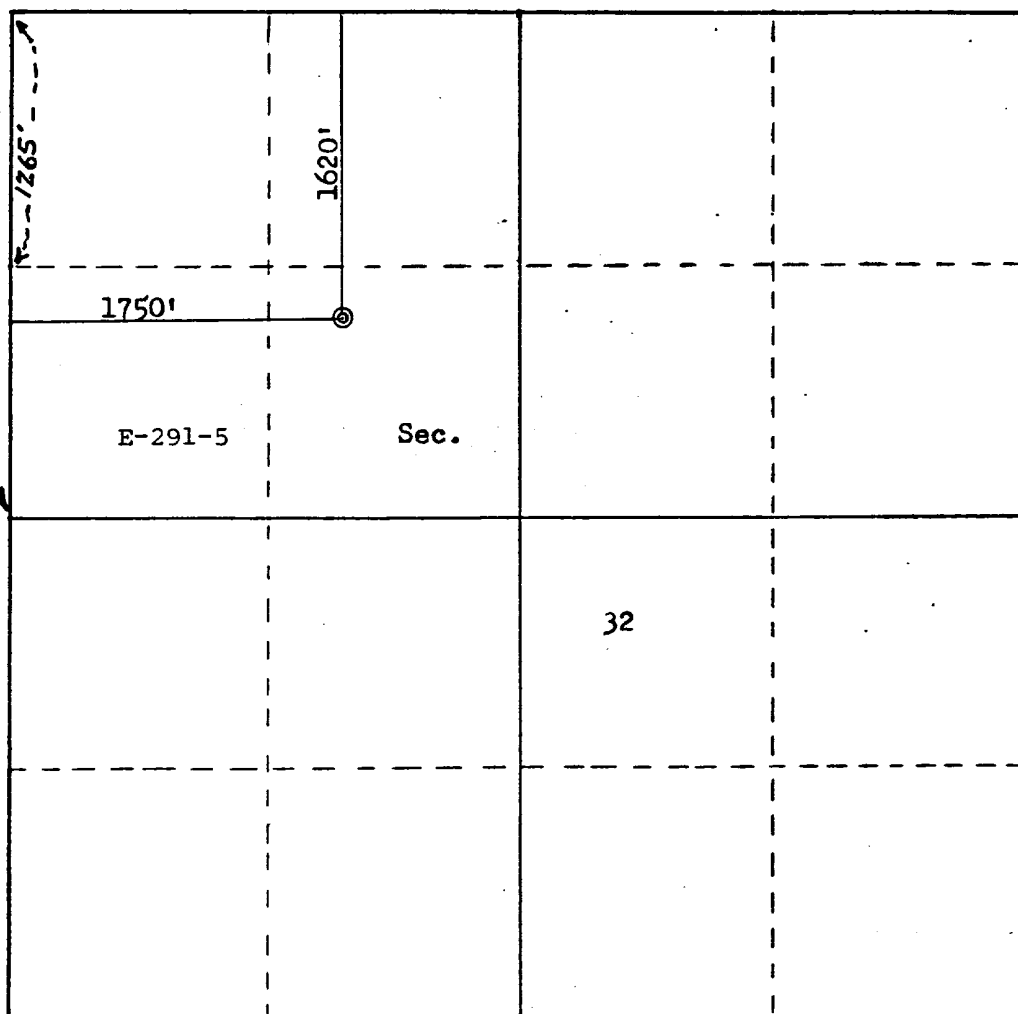
Operator MERRION OIL & GAS CORPORATION			Lease CANYON LARGO		Well No. 335
Unit Letter F	Section 32	Township 25N	Range 6W	County Rio Arriba	
Actual Footage Location of Well: 1620 feet from the North line and 1750 feet from the West line					
Ground Level Elev. 6785	Producing Formation Gallup		Pool Devils Fork Gallup		Dedicated Acreage: 160 Acres

1. Outline the acreage dedicated to the subject well by colored pencil or hachure marks on the plat below.
2. If more than one lease is dedicated to the well, outline each and identify the ownership thereof (both as to working interest and royalty).
3. If more than one lease of different ownership is dedicated to the well, have the interests of all owners been consolidated by communitization, unitization, force-pooling, etc?

☐ Yes ☐ No If answer is "yes," type of consolidation _____

If answer is "no," list the owners and tract descriptions which have actually been consolidated. (Use reverse side of this form if necessary.) _____

No allowable will be assigned to the well until all interests have been consolidated (by communitization, unitization, forced-pooling, or otherwise) or until a non-standard unit, eliminating such interests, has been approved by the Commission.



Scale: 1"=1000'

CERTIFICATION

I hereby certify that the information contained herein is true and complete to the best of my knowledge and belief.

Name
Steve S. Dunn

Position
Operations Manager

Company
Merrion Oil & Gas Corporation

Date
2/21/84

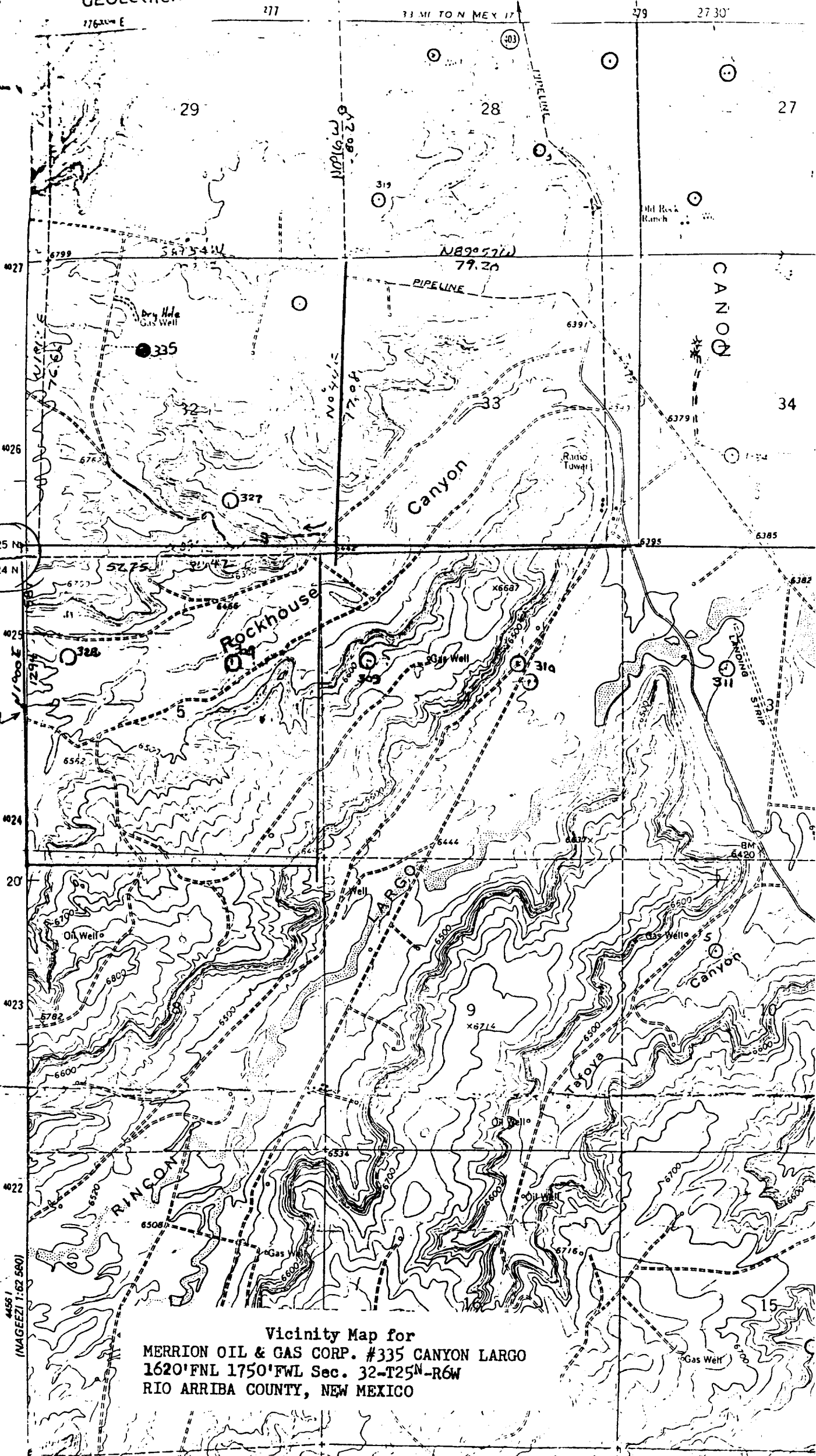
I hereby certify that the well location shown on this plat was plotted from field notes of actual surveys made by me or under my supervision, and that the same is true and correct to the best of my knowledge and belief.

Date Surveyed
December 16, 1983

Registered Professional Engineer and Land Surveyor
Fred E. Kerr Jr.

Certificate No. **3950**

DEPARTMENT OF THE INTERIOR
GEOLOGICAL SURVEY



Vicinity Map for
MERRION OIL & GAS CORP. #335 CANYON LARGO
1620' FNL 1750' FWL Sec. 32-T25N-R6W
RIO ARriba COUNTY, NEW MEXICO