

UNITED STATES  
DEPARTMENT OF THE INTERIOR  
BUREAU OF LAND MANAGEMENT

APPLICATION FOR PERMIT TO DRILL, DEEPEN, OR PLUG BACK

1a. TYPE OF WORK

DRILL ☒

DEEPEN ☐

PLUG BACK ☐

b. TYPE OF WELL

OIL  
WELL ☐

GAS  
WELL ☒

OTHER

SINGLE  
ZONE ☐

MULTIPLE  
ZONE ☐

2. NAME OF OPERATOR

Caulkins Oil Company

3. ADDRESS OF OPERATOR

P.O. Box 780 Farmington, New Mexico

4. LOCATION OF WELL (Report location clearly and in accordance with any State requirements.)\*

At surface

990' From South & 1120' From East

At proposed prod. zone Same

14. DISTANCE IN MILES AND DIRECTION FROM NEAREST TOWN OR POST OFFICE\*

36 Miles Southeast of Blanco, New Mexico

15. DISTANCE FROM PROPOSED\*

LOCATION TO NEAREST  
PROPERTY OR LEASE LINE, FT.  
(Also to nearest drig. unit line, if any)

1120'

16. NO. OF ACRES IN LEASE

2240

17. NO. OF ACRES ASSIGNED

TO THIS WELL

E 320.75

18. DISTANCE FROM PROPOSED LOCATION\*

TO NEAREST WELL, DRILLING, COMPLETED,  
OR APPLIED FOR, ON THIS LEASE, FT.

300'

19. PROPOSED DEPTH

7600

20. ROTARY OR CABLE TOOLS

Rotary

21. ELEVATIONS (Show whether DF, RT, GR, etc.)

6587 Gr

DRILLING OPERATIONS AUTHORIZED ARE

SUBJECT TO COMPLIANCE WITH ATTACHED

"GENERAL REQUIREMENTS"

APPROX. DATE WORK WILL START\*

8-10-84

23. PROPOSED CASING AND CEMENTING PROGRAM

This action is subject to administrative  
appeal pursuant to 30 CFR 290.

SIZE OF HOLE	SIZE OF CASING	WEIGHT PER FOOT	SETTING DEPTH	QUANTITY OF CEMENT
13 3/4"	9 5/8"	32.30	400'	Sufficient to circulate to surface
7 7/8"	5 1/2"	15.5# & 17#	7600'	3 stages - 2000 Cu.Ft.

Surface formation San Jose. No abnormal pressure or temperture anticipated.

It is proposed to drill new hole, surface to 7600' using 9.0 Gel based mud. Float will be run in drill pipe at bit. ES Induction Log will be run in open hole if possible.

A Schaeffer 10" Model LWP 6000# test BOP will be inuse at all times while drilling below surface casing. BOP will be tested at least one time during each 24 hour period and results recorded on daily drilling report.

New 9 5/8" 32.30# H-40 8rd thd, short collars surface casing will be set at approx 400' and cemented with sufficient cement to circulate to surface.

New 5 1/2' 15.5# & 17# K-55 short and long collar 8rd thd Smls casing will be

IN ABOVE SPACE DESCRIBE PROPOSED PROGRAM: If proposal is to deepen or plug back, give data on present productive zone and proposed new productive zone. If proposal is to drill or deepen directionally, give pertinent data on subsurface locations and measured and true vertical depths. Give blowout preventer program, if any.

24.

SIGNED

*Charles E. Vargus*

TITLE

Superintendent

(This space for Federal or State office use)

PERMIT NO.

APPROVAL DATE

APPROVED BY

TITLE

CONDITIONS OF APPROVAL, IF ANY:

ch7

NMOCC

APPROVED AS AMENDED MAR 30 1984 DATE <i>Danny S. Chas</i> AREA MANAGER FARMINGTON RESOURCE AREA
---

cemented top to bottom in 3 stages. First stage thru shoe with 412.5 Cu.Ft. 50-50 Poz, 6% Gel, 12 1/4# Gilsonite per sack followed by 118 Cu.Ft. Neat Cement.

Second stage thru tool set at approx 5600' with 412.5 Cu.Ft. 50-50 Poz, 6% Gel, 12 1/4# Gilsonite per sack followed by 118 Cu.Ft. Neat Cement.

Thrid stage thru tool set at 3500' with 825 Cu.Ft. 50-50 Poz, 6% Gel, 12 1/4# Gilsonite per sack followed by 118 Cu.Ft. Neat Cement.

Centralizers will be run on casing thru Mesa Verde and Dakota Zones.

Well will be completed in Mesa Verde and Dakota Zones.

All Zones will be perforated and fractured to stimulate production.

Packer will be set between Mesa Verde and Dakota Zone.

New 1 1/2" EUE 2.90# V-55 10rd thd Smls tubing will be run thru Packer to Dakota Zone.

New 1 1/4" NU 2.33# V-55 10rd thd Smls tubing will be run for Mesa Verde production.

Gas produced from this well contracted to Gas Company of New Mexico.

Estimated Formation Tops:

Alamo	2460'
Pictured Cliffs	3060'
Chacra	3940'
Mesa Verde	4722'
Graneros	7184'
Dakota	7384'

All distances must be from the outer boundaries of the Section

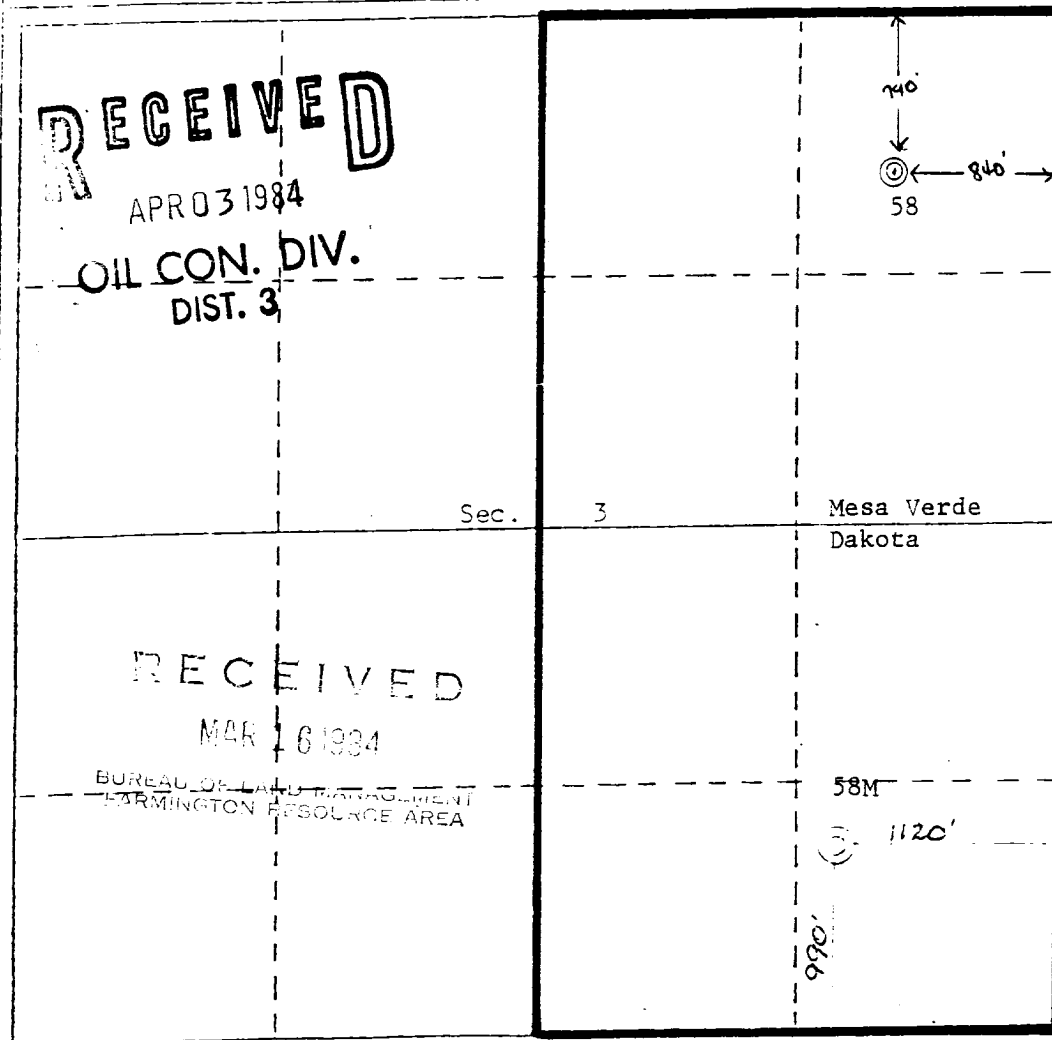
Owner <b>CAULKINS OIL COMPANY</b>			Lease <b>Breach E</b>		Well No. <b>58 M</b>
Unit <b>5</b>	Section <b>3</b>	Township <b>26 NORTH</b>	Range <b>6 WEST</b>	County <b>RIO ARriba</b>	
Actual Location of Well: 990 feet from the <b>SOUTH</b> line and 1120 feet from the <b>EAST</b> line					
Ground Level Elev. <b>6587</b>	Producing Formation <b>Mesa Verde - Dakota</b>	Pool <b>Blanco Mesa Verde</b>		Dedicated Acreage: <b>320.75</b> Acres	

1. Outline the acreage dedicated to the subject well by colored pencil or hatchure marks on the plat below.
2. If more than one lease is dedicated to the well, outline each and identify the ownership thereof (both as to working interest and royalty).
3. If more than one lease of different ownership is dedicated to the well, have the interests of all owners been consolidated by communitization, unitization, force-pooling, etc?

☐ Yes ☐ No If answer is "yes," type of consolidation \_\_\_\_\_

If answer is "no," list the owners and tract descriptions which have actually been consolidated. (Use reverse side of this form if necessary.) \_\_\_\_\_

No allowable will be assigned to the well until all interests have been consolidated (by communitization, unitization, forced-pooling, or otherwise) or until a non-standard unit, eliminating such interests, has been approved by the Division.



# CERTIFICATION

I hereby certify that the information contained herein is true and complete to the best of my knowledge and belief.

*Charles E. Verquer*  
Name

Charles E. Verquer

Position

Superintendent

Company

Caulkins Oil Company

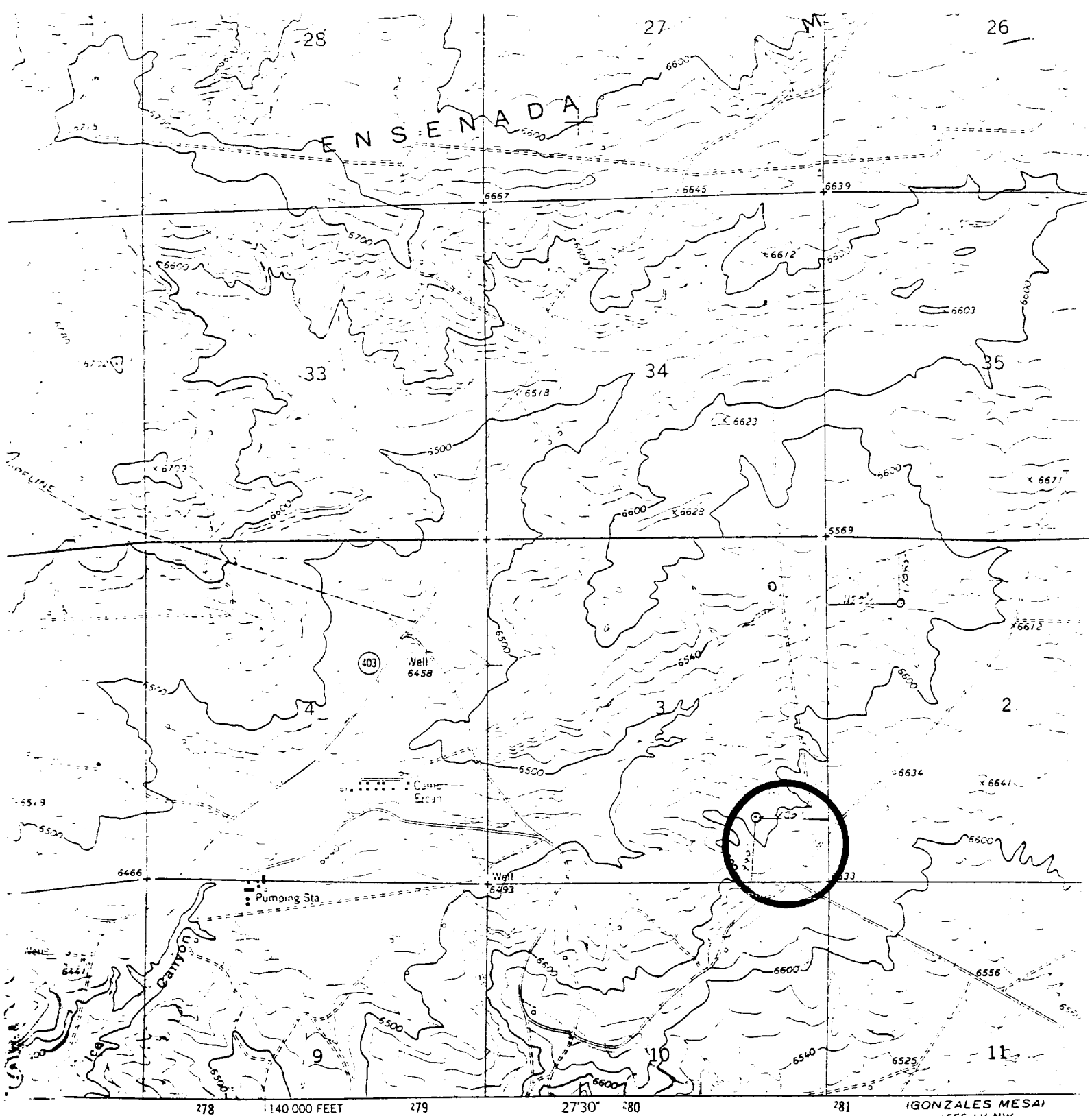
Date

3-13-84

I hereby certify that the well location shown on this plat was plotted from field notes of actual surveys made by me or under my supervision, and that the same is true and correct to the best of my knowledge and belief.

5 March, 1984

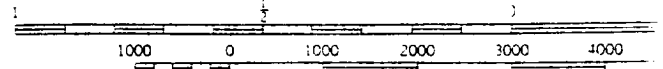
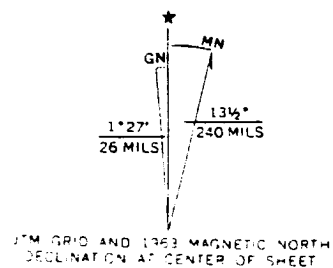
*Curtis G. Stoching*  
Curtis G. Stoching  
5990



by the Geological Survey

from aerial  
photograph 1963

datum  
site in western central zone



VICINITY MAP  
CAULKINS OIL COMPANY  
showing  
Well Location in SE/4 SE/4 of  
Section 3, T26N, R0W, N.M.P.M.  
Rio Arriba County, New Mexico  
Scale: 1" = 2000'

FO