

UNITED STATES
DEPARTMENT OF THE INTERIOR
BUREAU OF LAND MANAGEMENT

APPLICATION FOR PERMIT TO DRILL, DEEPEN, OR PLUG BACK

1a. TYPE OF WORK

DRILL ☒

DEEPEN ☐

PLUG BACK ☐

b. TYPE OF WELL

OIL
WELL ☐

GAS
WELL ☒

OTHER

SINGLE
ZONE ☐

MULTIPLE
ZONE ☒

2. NAME OF OPERATOR

Caulkins Oil Company

3. ADDRESS OF OPERATOR

P.O. Box 780 Farmington, New Mexico 87499

4. LOCATION OF WELL (Report location clearly and in accordance with any State requirements.)*

At surface

1590' From South and 1000' From West

At proposed prod. zone

Same

14. DISTANCE IN MILES AND DIRECTION FROM NEAREST TOWN OR POST OFFICE*

30 miles Southeast of Blanco, New Mexico

15. DISTANCE FROM PROPOSED*

LOCATION TO NEAREST
PROPERTY OR LEASE LINE, FT.
(Also to nearest drlg. unit line, if any)

1000'

16. NO. OF ACRES IN LEASE

2400

17. NO. OF ACRES ASSIGNED
TO THIS WELL

1320 Infil - 160 Chacra

18. DISTANCE FROM PROPOSED LOCATION*

TO NEAREST WELL, DRILLING, COMPLETED,
OR APPLIED FOR, ON THIS LEASE, FT.

19. PROPOSED DEPTH

7420'

20. ROTARY OR CABLE TOOLS

Rotary

21. ELEVATIONS (Show whether DF, RT, GR, etc.)

6496 Gr.

DRILLING OPERATIONS AUTHORIZED ARE
SUBJECT TO COMPLIANCE WITH ATTACHED

22. APPROX. DATE WORK WILL START*

August 1, 1985

23.

PROPOSED CEMENTING PROGRAM

This action is subject to administrative

appeal pursuant to 30 CFR 290.

SIZE OF HOLE	SIZE OF CASING	WEIGHT PER FOOT	SETTING DEPTH	
12 3/4"	9 5/8"	32.3#	400'	Sufficient to circulate 300 Cu.Ft.
7 7/8"	5 1/2"	15.5 & 17#	7420'	3 Stages - 2000 Cu.Ft. Total

Surface formation San Jose. No abnormal pressure or temperture anticipated.

It is proposed to drill new hole, surface to 7420' using 9.0 Gel based mud.
Float will be run in drill pipe at bit. ES Induction and Density Logs will be run.

A Schaeffer 10" Model LWP 6000# test BOP will be in use at all times while
drilling below surface casing. BOP will be tested at least one time during
each 24 hour period and results recorded on daily drilling report.

New 9 5/8" 32.30# H-40 8rd thd, short collars surface casing will be set at
approx 400' and cemented with sufficient cement to circulate to surface.

New 5 1/2" 15.5 & 17# K-55 short and long collar 8rd thd Smls casing will be
cemented top to bottom in 3 stages. First stage thru shoe with 412.50 Cu.Ft.
50-50 Poz, 6% Gel, 12 1/4# Gilsonite per sack followed by 118 Cu.Ft. Neat Cement.

IN ABOVE SPACE DESCRIBE PROPOSED PROGRAM: If proposal is to deepen or plug back, give data on present productive zone and proposed new productive
zone. If proposal is to drill or deepen directionally, give pertinent data on subsurface locations and measured and true vertical depths. Give blowout
preventer program, if any.

24.

SIGNED

Charles E. Vazquez

TITLE

Superintendent

AS AMENDED 12 84

(This space for Federal or State office use)

PERMIT NO.

APPROVAL DATE

DEC 12 1984

APPROVED BY

TITLE

CONDITIONS OF APPROVAL

OIL CON. DIV.
DIST. 3

NMOCC
*See Instructions On Reverse Side

Second stage thru tool set at approx 5420' with 412.50 Cu.Ft. 50 50 Poz, 6% Gel, 12 1/4# Gilsonite per sack followed by 118 Cu.Ft. Neat Cement.

Third stage thru tool set at approx 3500' with 825 Cu.Ft. 50 50 Poz, 6% Gel, 12 1/4# Gilsonite per sack followed by 118 Cu.Ft. Neat Cement.

Centralizers will be run on casing thru Chacra Mesa Verde and Dakota Zones.

Well will be completed in Chacra, Mesa Verde and Dakota Zones.

All Zones will be perforated and fractured to stimulate production.

Packer will be set between Commingled Chacra Mesa Verde and Dakota Zone.

New 1 1/2" EUE 2.90# V-55 10rd thd Smls tubing will be run thru Packer to Dakota Zone.

New 1 1/4" Nu 2.33# V-55 10rd thd Smls tubing will be run for Commingled Chacra Mesa Verde production.

Gas produced from this well contracted to Gas Company of New Mexico.

Estimated Formation Tops:

Alamo	2120'
Pictured Cliffs	2840'
Chacra	3750'
Mesa Verde	4530'
Graneros	7103'
Dakota	7230'

All distances must be from the outer boundaries of the Section.

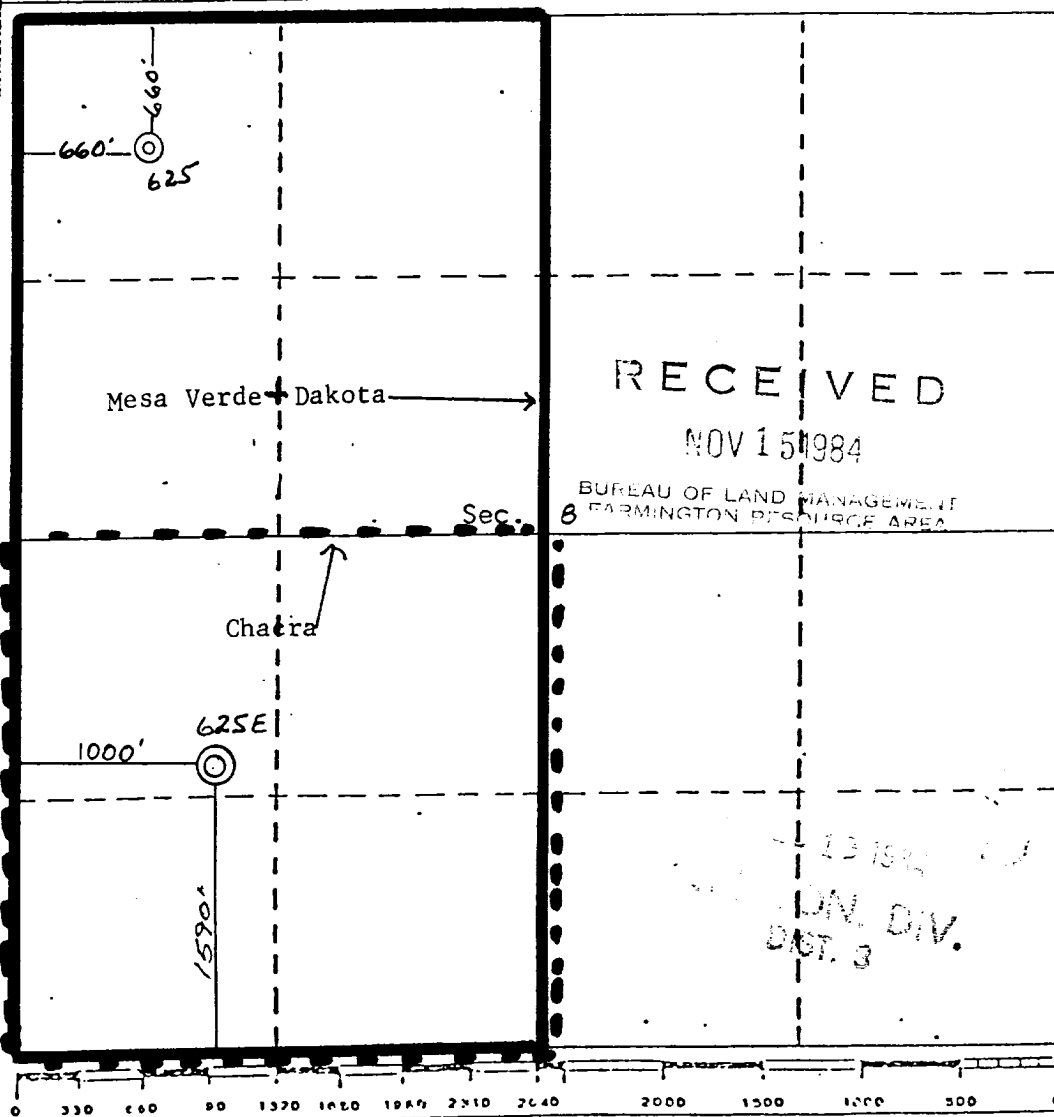
Operator CAULKINS OIL COMPANY			Lease BREECH A		Well No. 625-F
Unit Letter L	Section 8	Township 26 NORTH	Range 6 WEST	County RIO ARriba	
Actual Footage Location of Well: 1590 feet from the SOUTH line and 1000- feet from the WEST line					
Ground Level Elev. 6496	Producing Formation Dakota - Mesa Verde	Chacra Basin Dakota	Otero Chacra Blanco Mesa Verde	Dedicated Acreage 160 Chacra 320 Infil	Acre:

1. Outline the acreage dedicated to the subject well by colored pencil or hatchure marks on the plat below.
2. If more than one lease is dedicated to the well, outline each and identify the ownership thereof (both as to working interest and royalty).
3. If more than one lease of different ownership is dedicated to the well, have the interests of all owners been consolidated by communitization, unitization, force-pooling, etc?

☐ Yes ☐ No If answer is "yes," type of consolidation _____

If answer is "no," list the owners and tract descriptions which have actually been consolidated. (Use reverse side of this form if necessary.) _____

No allowable will be assigned to the well until all interests have been consolidated (by communitization, unitization, forced-pooling, or otherwise) or until a non-standard unit, eliminating such interests, has been approved by the Division



CERTIFICATION

I hereby certify that the information contained herein is true and complete to the best of my knowledge and belief.

Charles E. Verquer
Name

Charles E. Verquer

Position

Superintendent

Company

Caulkins Oil Company

Date

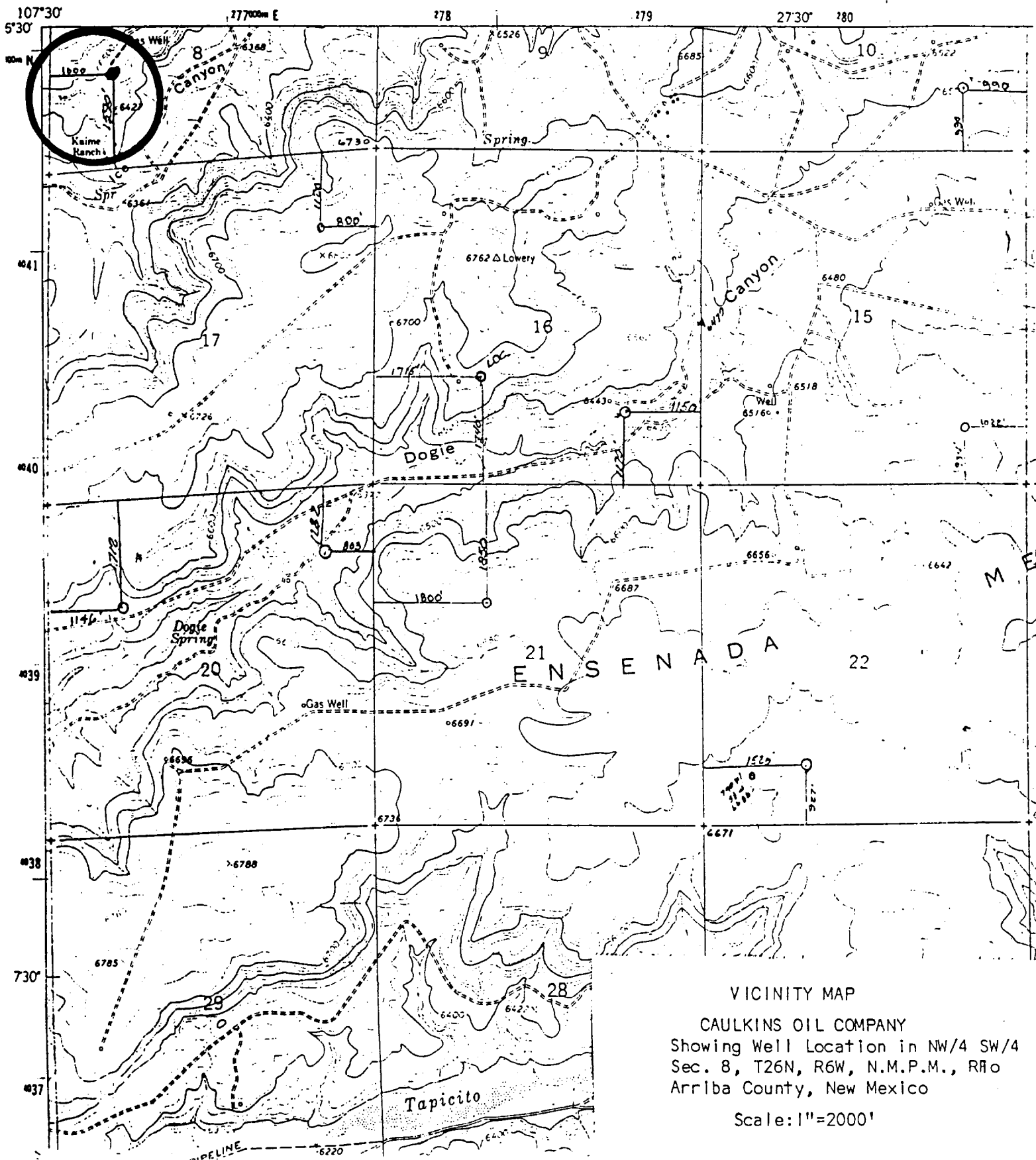
11-12-84

I hereby certify that the well location shown on this plat was plotted from field notes of actual surveys made by me or under my supervision, and that the same is true and correct to the best of my knowledge and belief.

Charles E. Verquer
Date Surveyed
REGISTERED LAND SURVEYOR
11-12-1984
Registered Professional Engineer
and/or Land Surveyor
Currys C. Stocking

Certificate No.
5980

UNITED STATES
DEPARTMENT OF THE INTERIOR
GEOLOGICAL SURVEY



VICINITY MAP

CAULKINS OIL COMPANY
Showing Well Location in NW/4 SW/4
Sec. 8, T26N, R6W, N.M.P.M., R10
Arriba County, New Mexico

Scale: 1"=2000'