

UNITED STATES
DEPARTMENT OF THE INTERIOR
BUREAU OF LAND MANAGEMENT

APPLICATION FOR PERMIT TO DRILL, DEEPEN, OR PLUG BACK

1a. TYPE OF WORK
DRILL ☒ DEEPEN ☐ PLUG BACK ☐

b. TYPE OF WELL
OIL WELL ☐ GAS WELL ☒ OTHER ☐ SINGLE ZONE ☐ MULTIPLE ZONE ☒

2. NAME OF OPERATOR
Caulkins Oil Company

3. ADDRESS OF OPERATOR
P.O. Box 780 Farmington, New Mexico 87499

4. LOCATION OF WELL (Report location clearly and in accordance with any State requirements.)
At surface 1122' From South & 1520' From East
At proposed prod. zone Same

14. DISTANCE IN MILES AND DIRECTION FROM NEAREST TOWN OR POST OFFICE OF LAND MANAGEMENT.
35 Miles Southeast of Blanco, New Mexico

10. DISTANCE FROM PROPOSED* LOCATION TO NEAREST PROPERTY OR LEASE LINE, FT.
(Also to nearest drlg. unit line, if any) 1122'

18. DISTANCE FROM PROPOSED LOCATION* TO NEAREST WELL, DRILLING, COMPLETED, OR APPLIED FOR, ON THIS LEASE, FT.
400'

21. ELEVATIONS (Show whether DF, RT, GR, etc.)
6693 Gr. DRILLING OPERATIONS AUTHORIZED ARE SUBJECT TO COMPLIANCE WITH ATTACHED

23. PROPOSED CASING AND CEMENTING PROGRAM

SIZE OF HOLE	SIZE OF CASING	WEIGHT PER FOOT	SETTING DEPTH
12 3/4"	9 5/8"	32.3#	400'
7 7/8"	5 1/2"	15.5 & 17#	7450'

16. NO. OF ACRES IN LEASE
2400

17. NO. OF ACRES ASSIGNED TO THIS WELL
320 Infil

20. ROTARY OR CABLE TOOLS
Rotary

22. APPROX. DATE WORK WILL START*
June 20, 1985

This action is subject to administrative appeal pursuant to 30 CFR 290.

QUANTITY OF CEMENT
Sufficient to circulate 300 Cu. Ft.
3 Stages - 2000 Cu. Ft. Total

Surface formation San Jose. No abnormal pressure or temperture anticipated.

It is proposed to drill new hole, surface to 7450' using 9.0 Gel based mud. Float will be run in drill pipe at bit. ES Induction and Density Logs will be run.

A Schaeffer 10" Model LWP 6000# test BOP will be in use at all times while drilling below surface casing. BOP will be tested at least one time during each 24 hour period and results recorded on daily drilling report.

New 9 5/8" 32.30# H-40 8rd thd, short collars surface casing will be set at approx 400' and cemented with sufficient cement to circulate to surface.

New 5 1/2" 15.5 & 17# K-55 short and long collar 8rd thd Smls casing will be cemented top to bottom in 3 stages. First stage thru shoe with 412.50 Cu. Ft.

50-50 Poz, 6% Gel, 12 1/4# Gilsonite per sack followed by 118 Cu. Ft. Neat Cement.

IN ABOVE SPACE DESCRIBE PROPOSED PROGRAM: If proposal is to deepen or plug back, give data on present productive zone and proposed new productive zone. If proposal is to drill or deepen directionally, give pertinent data on subsurface locations and measured and true vertical depths. Give blowout preventer program, if any.

24. SIGNED Charles E. Verguer TITLE Superintendent

(This space for Federal or State office use)

PERMIT NO. DEC 13 1984 APPROVAL DATE DEC 11 1984

APPROVED BY DEC 13 1984 TITLE OIL CON. DIV.

CONDITIONS OF APPROVAL, IF ANY
DIST. 3

NMOCC

*See Instructions On Reverse Side

Second stage thru too set at approx 5450' with 412.5 Cu.Ft. 50 50 Poz, 6% Gel, 12 1/4# Gilsonite per sack followed by 118 Cu.Ft. Neat Cement.

Third stage thru tool set at approx 3500' with 825 Cu.Ft. 50 50 Poz, 6% Gel, 12 1/4# Gilsonite per sack followed by 118 Cu.Ft. Neat Cement.

Centralizers will be run on casing thru Mesa Verde and Dakota Zones.

Well will be completed in Mesa Verde and Dakota Zones.

All Zones will be perforated and fractured to stimulate production.

Packer will be set between Mesa Verde and Dakota Zones.

New 1 1/2" EUE 2.90# V-55 10rd thd Smls tubing will be run thru Packer to Dakota Zone.

New 1 1/4" NU 2.33# V-55 10rd thd Smls tubing will be run for Mesa Verde production.

Gas produced from this well contracted to Gas Company of New Mexico.

Estimated Formation Tops:

Alamo	2252'
Pictured Cliffs	2960'
Chacra	3833'
Mesa Verde	4610'
Graneros	7252'
Dakota	7336'

All distances must be from the outer boundaries of the Section.

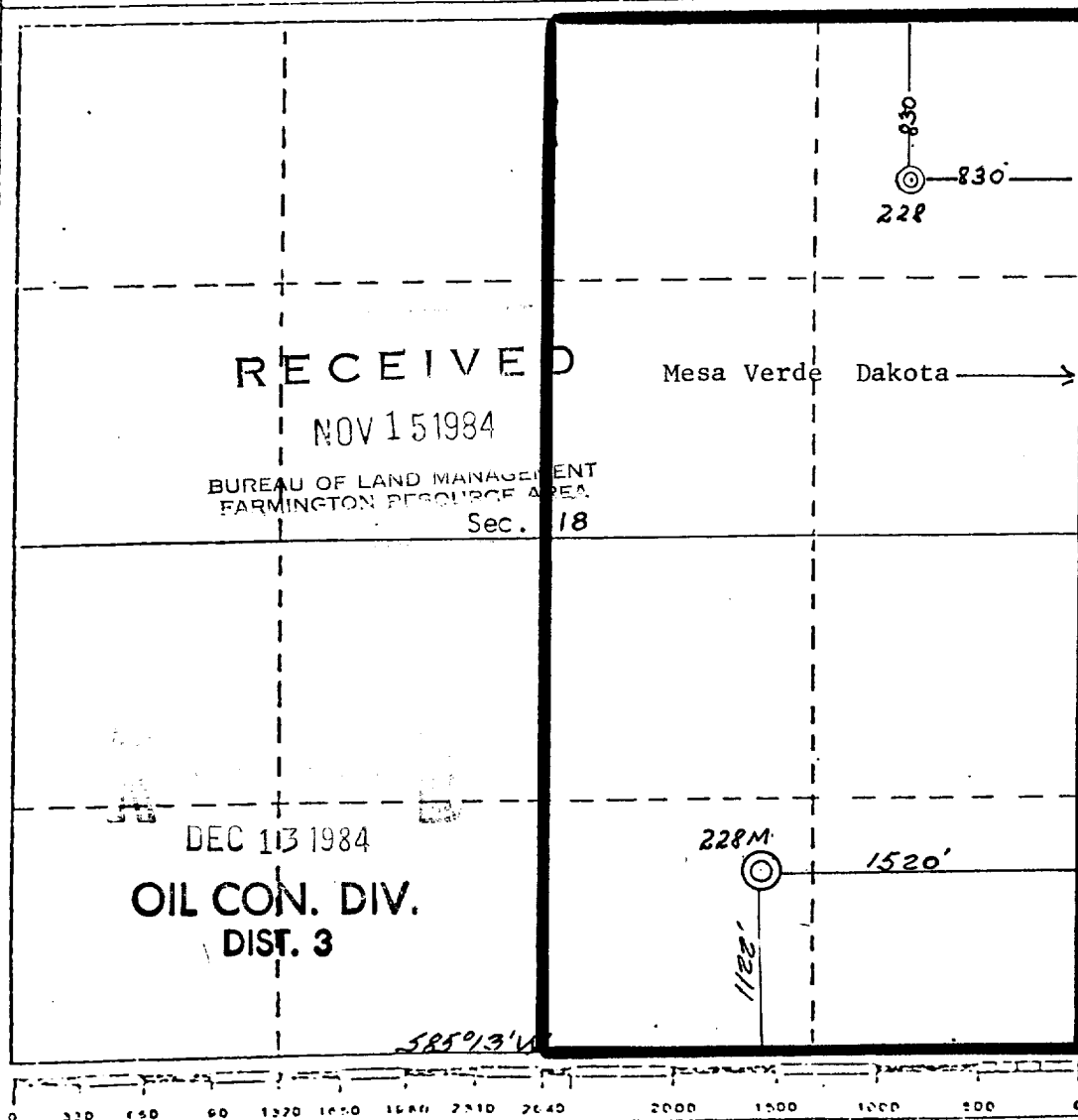
Operator CAULKINS OIL COMPANY			Lease BREECH		Well No. 228 - M
Unit Letter 0	Section 18	Township 26 NORTH	Range 6 WEST	County RIO ARRIBA	
Actual Well Location of Well: 1122 feet from the SOUTH line and 1520 feet from the EAST line					
Ground Level Elev. 6693	Producing Formation Mesa Verde - Dakota		Pool Blanco Mesa Verde - Basin Dakota		Dedicated Acreage: 320 Infil Acres

1. Outline the acreage dedicated to the subject well by colored pencil or hachure marks on the plat below.
2. If more than one lease is dedicated to the well, outline each and identify the ownership thereof (both as to working interest and royalty).
3. If more than one lease of different ownership is dedicated to the well, have the interests of all owners been consolidated by communitization, unitization, force-pooling, etc?

☐ Yes ☐ No If answer is "yes," type of consolidation _____

If answer is "no," list the owners and tract descriptions which have actually been consolidated. (Use reverse side of this form if necessary.) _____

No allowable will be assigned to the well until all interests have been consolidated (by communitization, unitization, forced-pooling, or otherwise) or until a non-standard unit, eliminating such interests, has been approved by the Division



CERTIFICATION

I hereby certify that the information contained herein is true and complete to the best of my knowledge and belief.

Charles E. Verquer
Name

Charles E. Verquer

Position

Superintendent

Company

Caulkins Oil Company

Date

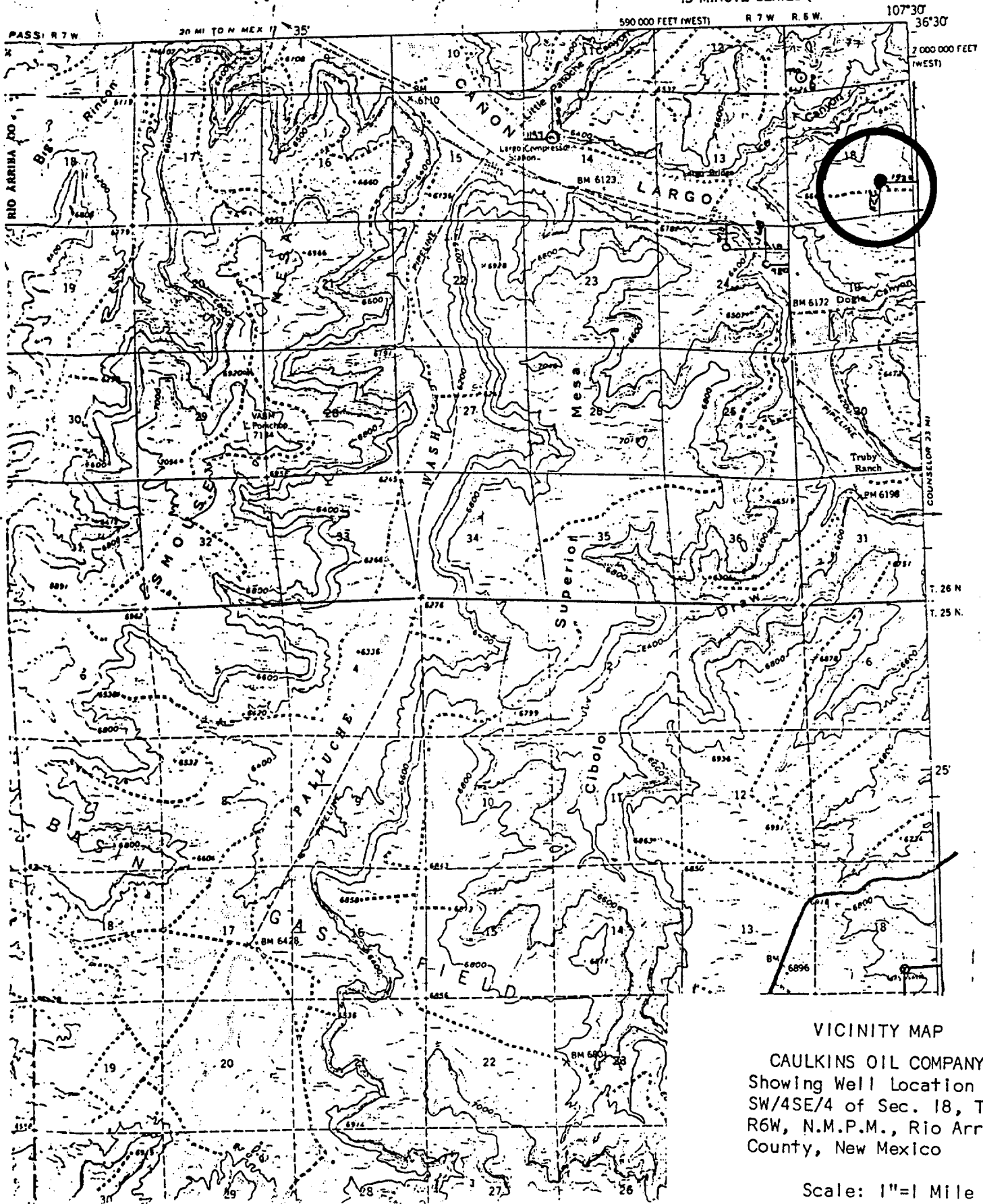
11-12-84

I hereby certify that the well location shown on this plat was plotted from field notes of actual surveys made by me or under my supervision, and that the same is true and correct to the best of my knowledge and belief.

11-2-1984

Date Surveyed: 11-2-1984
Curtis G. Stocking
Registered Professional Engineer
and/or Land Surveyor
Curtis G. Stocking
5980

NAGEEZI QUADRANGLE
NEW MEXICO
15 MINUTE SERIES (TOPOGRAPHIC)



VICINITY MAP

CAULKINS OIL COMPANY
Showing Well Location in
SW/4SE/4 of Sec. 18, T26N,
R6W, N.M.P.M., Rio Arriba
County, New Mexico

Scale: 1"=1 Mile