

UNITED STATES
DEPARTMENT OF THE INTERIOR
BUREAU OF LAND MANAGEMENT

APPLICATION FOR PERMIT TO DRILL, DEEPEN, OR PLUG BACK

1a. TYPE OF WORK

DRILL ☒

DEEPEN ☐

PLUG BACK ☐

b. TYPE OF WELL

OIL
WELL ☐

GAS
WELL ☒

OTHER

SINGLE
ZONE ☐

MULTIPLE
ZONE ☒

2. NAME OF OPERATOR

Caulkins Oil Company

3. ADDRESS OF OPERATOR

P.O. Box 780 Farmington, New Mexico 87499

4. LOCATION OF WELL (Report location clearly and in accordance with any State requirements.)

At surface

927' From South & 1506' From West

At proposed prod. zone Same

14. DISTANCE IN MILES AND DIRECTION FROM NEAREST TOWN OR POST OFFICE*

35 Miles Southeast of Blanco, New Mexico

10. DISTANCE FROM PROPOSED*

LOCATION TO NEAREST
PROPERTY OR LEASE LINE, FT.
(Also to nearest drilg. unit line, if any)

927

16. NO. OF ACRES IN LEASE

1920

17. NO. OF ACRES ASSIGNED
TO THIS WELL

W320 Infil

18. DISTANCE FROM PROPOSED LOCATION*

TO NEAREST WELL, DRILLING, COMPLETED,
OR APPLIED FOR, ON THIS LEASE, FT.

500'

19. PROPOSED DEPTH

7540'

20. ROTARY OR CABLE TOOLS

Rotary

21. ELEVATIONS (Show whether DF, RT, GR, etc.)

6664 Gr.

DRILLING OPERATIONS AUTHORIZED ARE
SUBJECT TO COMPLIANCE WITH ATTACHED

22. APPROX. DATE WORK WILL START*

May 20, 1985

23.

PROPOSED CASING AND CEMENTING PROGRAM

This action is subject to administrative
appeal pursuant to 30 CFR 290.

SIZE OF HOLE	SIZE OF CASING	WEIGHT PER FOOT	SETTING DEPTH	QUANTITY OF CEMENT
12 3/4"	9 5/8"	32.3#	400'	Sufficient to circulate 300 Cu.Ft.
7 7/8"	5 1/2"	15.5 & 17#	7540'	3 Stages - 2000 Cu.Ft. Total

Surface formation San Jose. No abnormal pressure or temperature anticipated.

It is proposed to drill new hole, surface to 7540' using 9.0 Gel based mud. Float will be run in drill pipe at bit. ES Induction and Density Logs will be run.

A Schaeffer 10" Model LWP 6000# test BOP will be in use at all times while drilling below surface casing. BOP will be tested at least one time during each 24 hour period and results recorded on daily drilling report.

New 9 5/8" 32.30# H-40 8rd thd, short collars surface casing will be set at approx 400' and cemented with sufficient cement to circulate to surface.

New 5 1/2" 15.5 & 17# K-55 short and long collar 8rd thd Smls casing will be cemented top to bottom in 3 stages. First stage thru shoe with 412.50 Cu.Ft.

50-50 Poz, 6% Gel, 12 1/4# Gilsomite per sack followed by 118 Cu.Ft. Neat Cement.

IN ABOVE SPACE DESCRIBE PROPOSED PROGRAM: If proposal is to deepen or plug back, give data on present productive zone and proposed new productive zone. If proposal is to drill or deepen directionally, give pertinent data on subsurface locations and measured and true vertical depths. Give blowout preventer program, if any.

24.

SIGNED

Charles E. Veyman

TITLE

Superintendent

(This space for Federal or State office use)

PERMIT NO.

APPROVAL DATE

APPROVED BY

CONDITIONS OF APPROVAL, IF ANY:

DEC 13 1984

TITLE

OIL CON. DIV. NMOCC
DIST. 3

See Instructions On Reverse Side

APPROVED

AS AMENDED

DEC 11 1984

FARMINGTON RESOURCE AREA

Second stage thru too set at approx 5540' with 412.5 Cu.Ft. 50 50 Poz, 6% Gel, 12 1/4# Gilsonte per sack followed by 118 Cu.Ft. Neat Cement.

Third stage thru tool set at approx 3500' with 825 Cu.Ft. 50 50 Poz, 6% Gel, 12 1/4# Gilsonte per sack followed by 118 Cu.Ft. Neat Cement.

Centralizers will be run on casing thru Mesa Verde and Dakota Zones.

Well will be completed in Mesa Verde and Dakota Zones.

All Zones will be perforated and fractured to stimulate production.

Packer will be set between Mesa Verde and Dakota Zones.

New 1 1/2" EUE 2.90# V-55 10rd thd Smls tubing will be run thru Packer to Dakota Zone.

New 1 1/4" NU 2.33# V-55 10rd thd Smls tubing will be run for Mesa Verde production.

Gas produced from this well contracted to Gas Company of New Mexico for MV Zone and El Paso Natural Gas Company for Dakota Zone.

Estimated Formation Tops:

Alamo	2295
Pictured Cliffs	2989'
Chacra	3890'
Mesa Verde	4690'
Graneros	7252'
Dakota	7386'

DRILLING PLAN and SURFACE USE PROGRAM

Well No. 344-E
927' From South & 1506' From West
Section 22, 26N, 6W
Rio Arriba County, New Mexico

DRILLING PLAN

(1) Estimated Formation Tops:

Alamo	2295'
Pictured Cliffs	2989'
Chacra	3890'
Mesa Verde	4690'
Graneros	7252'
Dakota	7386'

(2) Alamo Water Sands:

Est. Top	2295'
Est. Bottom	2510'

- (3) A Schaeffer 10" Model LWP 6000# test BOP will be in use at all times while drilling below surface casing. BOP will be tested at least once every 24 hour period and so noted on daily report.
- (4) Approx 1000' 5 1/2" 17# K-55 8rd thd ST&C Smls casing on bottom.
Approx 5540' 5 1/2" 15.5# K-55 8rd thd ST&C Smls casing run from 1000' off bottom to 1000' below surface.
1000' of 17# K-55 8rd thd LT&C Smls casing run from 1000' below surface to surface.
Above are minumin grades and weights to be run.
- (5) Normally if there is no hole swelling clear water is used for circulating Medium to approximately 3000' then hole is mudded up using 9.0# plus Gel based mud from that point to TD.
- (6) Induction Electric and Density Logs will be run in open hole if possible.
- (7) No abnormal pressure or temperature expected.
Normal Bottom hole pressures are below 3000#.

SURFACE USE PROGRAM:

(1) Topo Map of Caulkins Oil Company properties attached:

Locations circled with Red.
Access route marked Largo Canyon School location.
Existing roads will be maintained in same manner as before drilling New Well.

(2) No new roads.

- (3) Existing wells within one mile located on Topo Map.
- (4) Attached plat shows anticipated location of prodction equipment.
- (5) Drilling and completing water will be produced from Caulkins Well No. 130, located in NE 1/4 of NW 1/4 of Section 9, 26N 6W. Water well location identified on Topo Map.
All roads used to truck water will also be identified on Topo Map.
- (6) No construction materials needed.
- (7) All cuttings, chemicals and salt will be contained in reserve pit. A pit 8' X 8' X 6' deep will be dug near circulating pit and then fenced with fine woven wire to contain and burn all sacks and etc. A hole will be drilled to set portable toilet.
After drilling completed sewage hole will be covered, also burn pit and area will be cleaned up and covered.
Reserve pit will be used to contain all fluids recovered while completing and testing.
Gas produced while cleaning up and testing will be flared in reserve pit to help dry up drilling fluids.
Reserve pit shall be fenced at all times while it contains fluid. It will be covered as soon after well completion as is practical.
- (8) No ancillary facilities.
- (9) Suveyors location plat shows temporary pits, temporary rig equipment while drilling.
- (10) After well is completed location and all disturbed areas will be cleaned up then reseeded with seed Mix #1 to within 5' off all facilities.
All equipment owned and operated by Caulkins Oil Company will be painted Green.
- (11) Surface ownership Federal.
- (12) NA
- (13) I hereby certify that I or persons under my direct supervision, have inspected the proposed drill site and access route; that I am familiar with the conditions which currently exist; that the statements made in this plan are, to the best of my knowledge, true and correct; and that the work associated with operations proposed herein will be performed by Caulkins Oil Company and its contractors and subcontractors in conformity with this plan and the terms and conditions under which it is approved. This statement is subject to the provisions of 18 U.S.C. 1001 for the filing of a false statement.

Date 11-12-84

Name and Title Charles E. Vargus Superintendent
Caulkins Oil Company

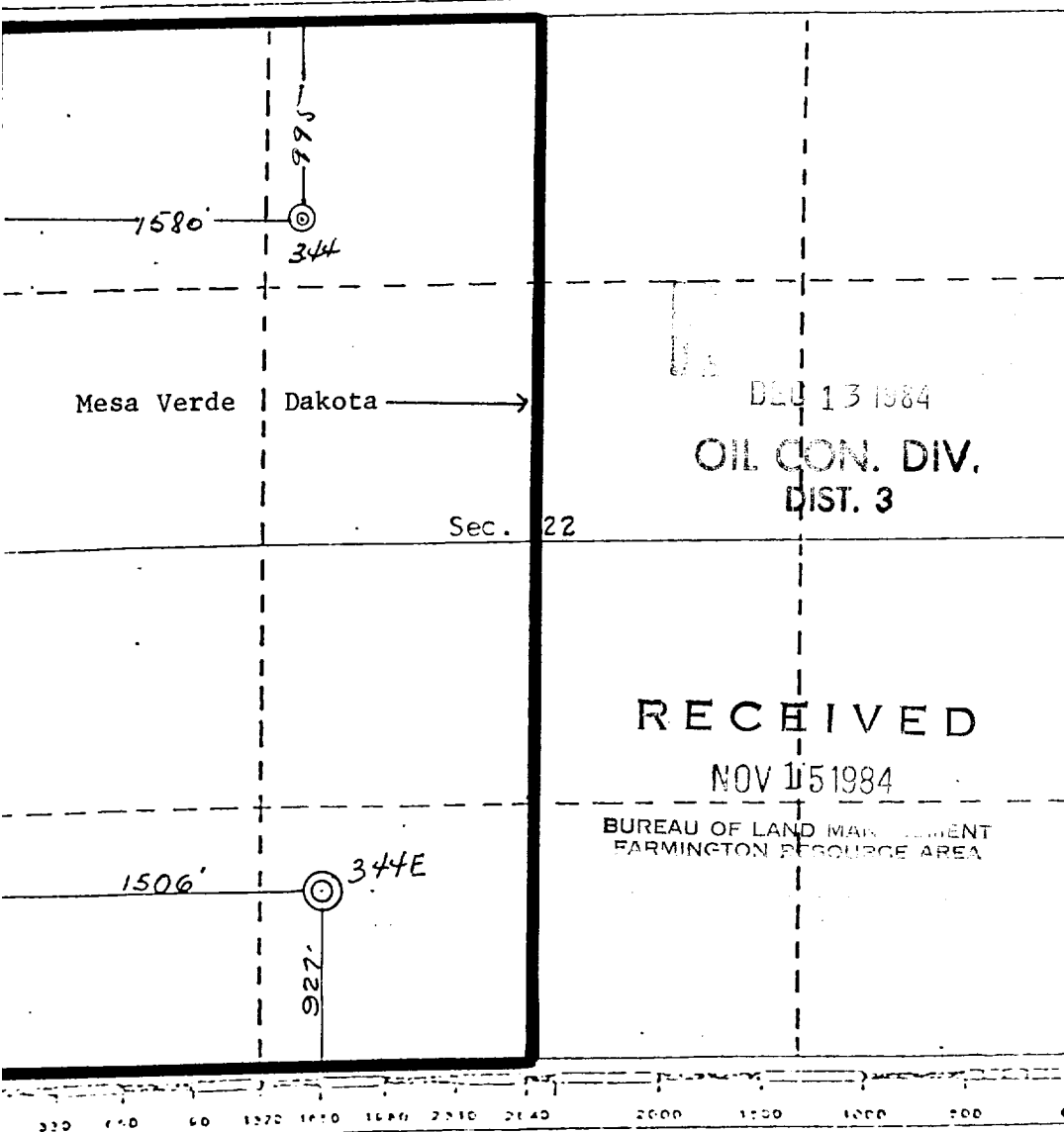
Operator CAULKINS OIL COMPANY			Lease REUTER		Well No. 344-E
Unit Letter N	Section 22	Township 26 NORTH	Range 6 WEST	County RIO ARriba	
Actual Well Location of Well:					
927 feet from the SOUTH		1506 feet from the WEST		line	
Ground Level Elev. 6664	Producing Formation Mesa Verde - Dakota	Pool Blanco Mesa Verde - Basin Dakota		Dedicated Acreage: 320 Infil	Acre:

1. Outline the acreage dedicated to the subject well by colored pencil or hatchure marks on the plat below.
2. If more than one lease is dedicated to the well, outline each and identify the ownership thereof (both as to working interest and royalty).
3. If more than one lease of different ownership is dedicated to the well, have the interests of all owners been consolidated by communitization, unitization, force-pooling, etc?

☐ Yes ☐ No If answer is "yes," type of consolidation _____

If answer is "no," list the owners and tract descriptions which have actually been consolidated. (Use reverse side of this form if necessary.) _____

No allowable will be assigned to the well until all interests have been consolidated (by communitization, unitization, forced-pooling, or otherwise) or until a non-standard unit, eliminating such interests, has been approved by the Division



CERTIFICATION

I hereby certify that the information contained herein is true and complete to the best of my knowledge and belief.

Charles E. Verquer
Name

Charles E. Verquer

Position

Superintendent

Company

Caulkins Oil Company

Date

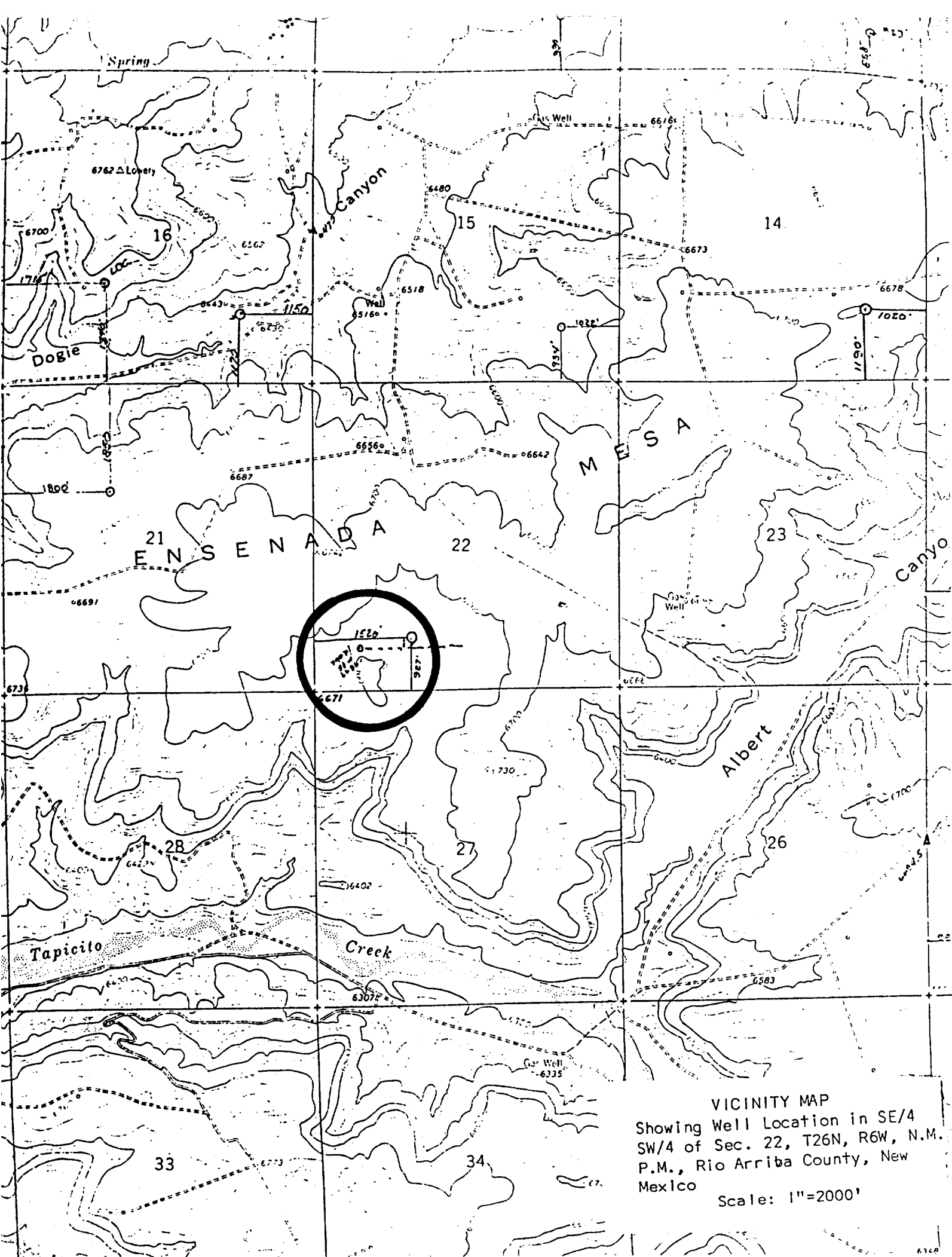
11-12-84

I hereby certify that the well location shown on this plat was plotted from field notes of actual surveys made by me or under my supervision, and that the same is true and correct to the best of my knowledge and belief.

11-2-1984

Curtis G. Stocking
Registered Professional Engineer
and/or Land Surveyor
Curtis G. Stocking

Certificate No. 5980



VICINITY MAP
Showing Well Location in SE/4
SW/4 of Sec. 22, T26N, R6W, N.M.
P.M., Rio Arriba County, New
Mexico
Scale: 1"=2000'