

UNITED STATES
DEPARTMENT OF THE INTERIOR
BUREAU OF LAND MANAGEMENT

APPLICATION FOR PERMIT TO DRILL, DEEPEN, OR PLUG BACK

1a. TYPE OF WORK
DRILL DEEPEN PLUG BACK

b. TYPE OF WELL
OIL WELL GAS WELL OTHER
SINGLE ZONE MULTIPLE ZONE

2. NAME OF OPERATOR
Caulkins Oil Company

3. ADDRESS OF OPERATOR
P.O. Box 780 Farmington, New Mexico 87499

4. LOCATION OF WELL (Report location clearly and in accordance with any State requirements.)
At surface 2056' From North & 1197' From West
At proposed prod. zone Same

14. DISTANCE IN MILES AND DIRECTION FROM NEAREST TOWN OR POST OFFICE*
28 Miles Southeast of Blanco, New Mexico

15. DISTANCE FROM PROPOSED LOCATION TO NEAREST PROPERTY OR LEASE LINE, FT. (Also to nearest drig. unit line, if any)
1197

15. DISTANCE FROM PROPOSED LOCATION TO NEAREST WELL, DRILLING, COMPLETED, OR APPLIED FOR, ON THIS LEASE, FT.
500'

21. ELEVATIONS (Show whether DF, RT, GR, etc.)
6112 Gr.

23. PROPOSED CASING AND CEMENTING PROGRAM

SIZE OF HOLE	SIZE OF CASING	WEIGHT PER FOOT	SETTING DEPTH
12 3/4"	9 5/8"	32.3#	400'
7 7/8"	5 1/2"	15.5 & 17#	6825'

QUANTITY OF CEMENT:
Sufficient to circulate 300 Cu. Ft
3 Stages - 2000 Cu.Ft. Total

5. LEASE DESIGNATION AND SERIAL NO.
NM 03381

6. IF INDIAN, ALLOTTEE OR TRIBE NAME

7. UNIT AGREEMENT NAME

8. FARM OR LEASE NAME
Breech "B"

9. WELL NO.
220-M

10. FIELD AND POOL, OR WILDCAT
Blanco MV - Basin Dakota

11. SEC., T., R., M., OR BLK. AND SURVEY OR AREA
Section 14, 26N 7W

12. COUNTY OR PARISH
Rio Arriba

13. STATE
New Mexico

RECEIVED
NOV 15 1984

BUREAU OF LAND MANAGEMENT
BLANCO PRODUCTION RESOURCE AREA

Surface formation San Jose. No abnormal pressure or temperature anticipated.

It is proposed to drill new hole, surface to 6825' using 9.0 Gel based mud. Float will be run in drill pipe at bit. ES Induction and Density Logs will be run.

A Schaeffer 10" Model LWP 6000# test BOP will be in use at all times while drilling below surface casing. BOP will be tested at least one time during each 24 hour period and results recorded on daily drilling report.

New 9 5/8" 32.30# H-40 8rd thd, short collars surface casing will be set at approx 400' and cemented with sufficient cement to circulate to surface.

New 5 1/2" 15.5 & 17# K-55 short and long collar 8rd thd Smls casing will be cemented top to bottom in 3 stages. First stage thru shoe with 412.50 Cu.Ft. 50-50 Poz, 6% Gel, 12 1/4# Gilsonite per sack followed by 118 Cu.Ft. Neat Cement.

IN ABOVE SPACES DESCRIBE PROPOSED PROGRAM: If proposal is to deepen or plug back, give data on present productive zone and proposed new productive zone. If proposal is to drill or deepen directionally, give pertinent data on subsurface locations and measured and true vertical depths. Give blowout preventer program, if any.

24. SIGNED Charles E. Wymer TITLE Superintendent

(This space for Federal or State office use)

PERMIT NO. _____ APPROVAL DATE MAR 11 1985

APPROVED BY _____ TITLE OIL CON. DIV. DIST. 3 OPERATOR

CONDITIONS OF APPROVAL, IF ANY: See Instructions On Reverse Side

APPROVED
DATE 11-12 84
AS AMENDED
FEB 04 1985
John H. Hoke
AREA MANAGER
FARMINGTON RESOURCE AREA

Second stage thru too set at approx 4825' with 412.5 Cu.Ft. 50 50 Poz, 6% Gel, 12 1/4# Gilsonite per sack followed by 118 Cu.Ft. Neat Cement.

Third stage thru tool set at approx 3500' with 825 Cu.Ft. 50 50 Poz, 6% Gel, 12 1/4# Gilsonite per sack followed by 118 Cu.Ft. Neat Cement.

Centralizers will be run on casing thru Mesa Verde and Dakota Zones.

Well will be completed in Mesa Verde and Dakota Zones.

All Zones will be perforated and fractured to stimulate production.

Packer will be set between Mesa Verde and Dakota Zones.

New 1 1/2" EUE 2.90# V-55 10rd thd Smls tubing will be run thru Packer to Dakota Zone.

New 1 1/4" NU 2.33# V-55 10rd thd Smls tubing will be run for Mesa Verde production.

Gas produced from this well contracted to Gas Company of New Mexico.

Estimated Formation Tops:

Alamo	1620'
Pictured Cliffs	2252'
Chacra	3170'
Mesa Verde	3960'
Graneros	6592'
Dakota	6684'

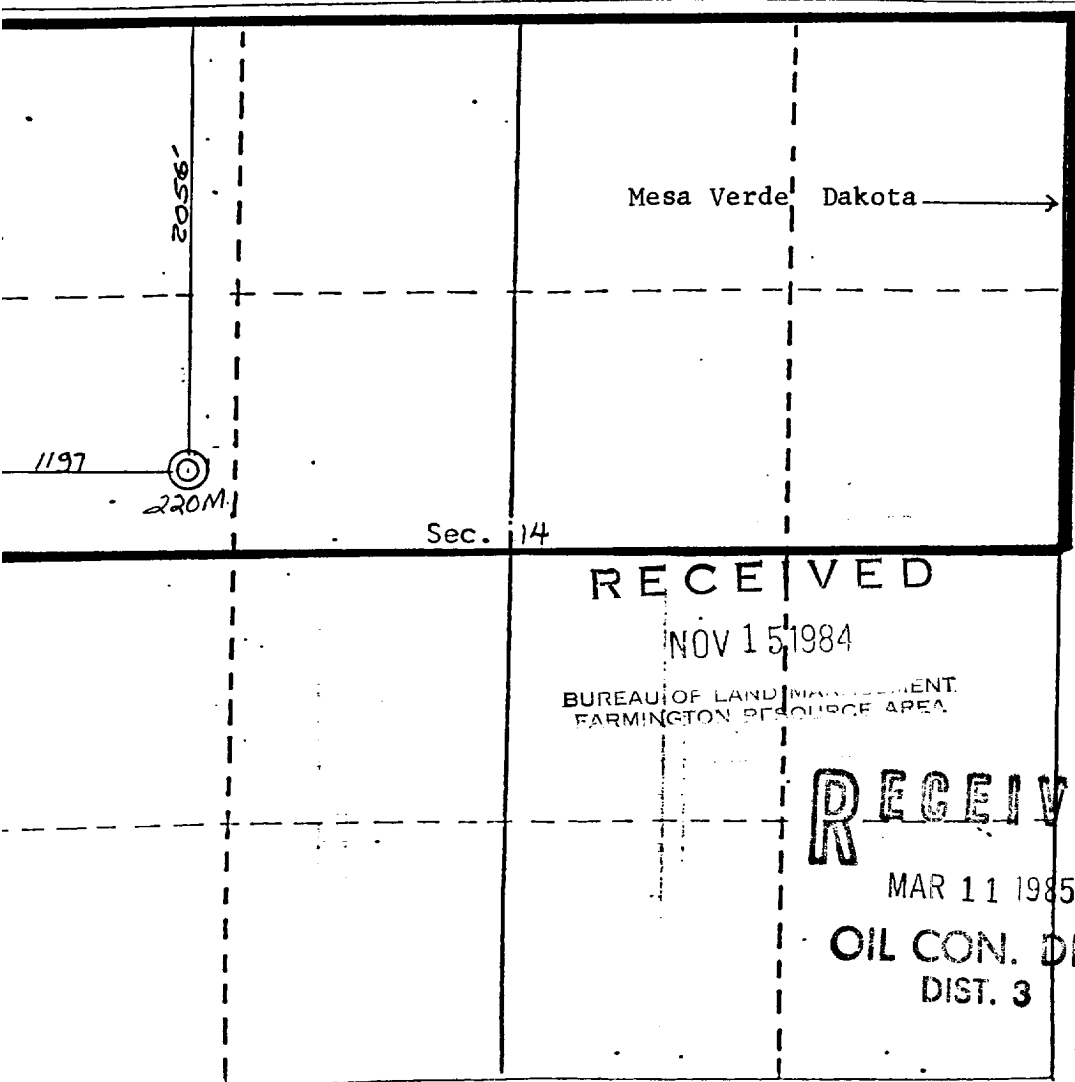
Operator CAULKINS OIL COMPANY			Lease BREECH "B"		Well No. 220 - M
Well Letter E	Section 14	Township 26 NORTH	Range 7 WEST	County RIO ARRIBA	
Actual Footage Location of Well: 2056 feet from the NORTH line and 1197 feet from the WEST line					
Ground Level Elev. 6112	Producing Formation Mesa Verde - Dakota		Pool Blanco Mesa Verde - Basin Dakota	Dedicated Acreage: 320 Infil Acres	

1. Outline the acreage dedicated to the subject well by colored pencil or hachure marks on the plat below.
2. If more than one lease is dedicated to the well, outline each and identify the ownership thereof (both as to working, interest and royalty).
3. If more than one lease of different ownership is dedicated to the well, have the interests of all owners been consolidated by communitization, unitization, force-pooling, etc?

Yes No If answer is "yes," type of consolidation _____

If answer is "no," list the owners and tract descriptions which have actually been consolidated. (Use reverse side of this form if necessary.) _____

No allowable will be assigned to the well until all interests have been consolidated (by communitization, unitization, forced-pooling, or otherwise) or until a non-standard unit, eliminating such interests, has been approved by the Divisor



CERTIFICATION

I hereby certify that the information contained herein is true and complete to the best of my knowledge and belief.

Charles E. Verquer
Name
Charles E. Verquer
Position
Superintendent
Company
Caulkins Oil Company
Date
11-12 84

I hereby certify that the well location shown on this plat was plotted from field notes of actual surveys made by me or under my supervision, and that the same is true and correct to the best of my knowledge and belief.

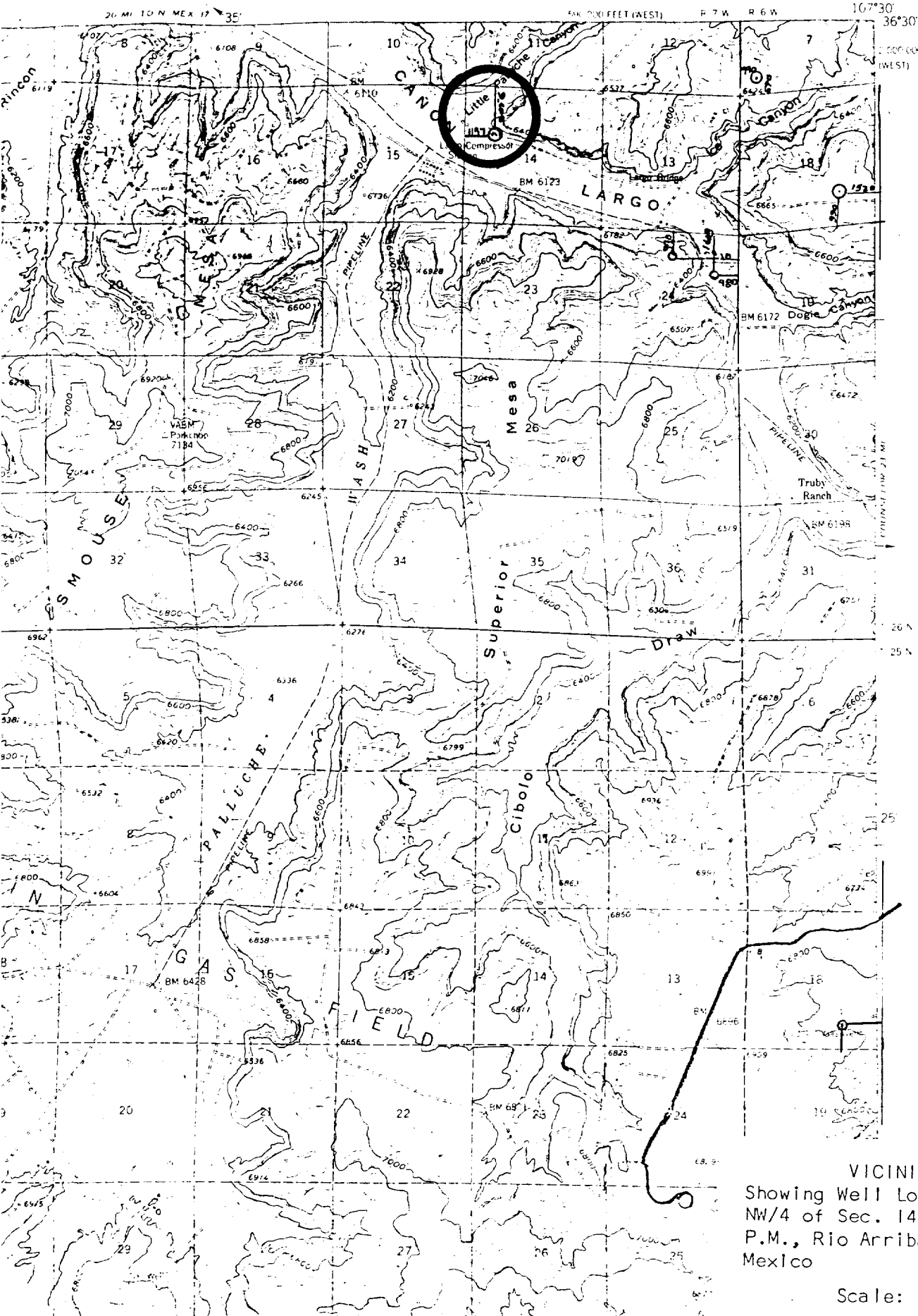
RECEIVED
NOV 15 1984
BUREAU OF LAND MANAGEMENT
FARMINGTON RESOURCE AREA

RECEIVED
MAR 11 1985
OIL CON. DIV.
DIST. 3
Charles E. Verquer
REGISTERED PROFESSIONAL ENGINEER
and/or LAND SURVEYOR
CURTIS C. STOCKING

Certificate No.
5980

NAGEEZI QUADRANGLE
NEW MEXICO
15 MINUTE SERIES (TOPOGRAPHIC)

34



VICINITY MAP
Showing Well Location in SW/4
NW/4 of Sec. 14, T26N, R7W, N.M.
P.M., Rio Arriba County, New
Mexico

Scale: 1"=1 Mile