

UNITED STATES
DEPARTMENT OF THE INTERIOR
GEOLOGICAL SURVEY

APPLICATION FOR PERMIT TO DRILL, DEEPEN, OR PLUG BACK

1a. TYPE OF WORK

DRILL ☒DEEPEN ☐PLUG BACK ☐

b. TYPE OF WELL

OIL
WELL ☐GAS
WELL ☒OTHER ☐SINGLE
ZONE ☐MULTIPLE
ZONE ☒

2. NAME OF OPERATOR

CURTIS J. LITTLE

3. ADDRESS OF OPERATOR

P. O. Box 1258, Farmington, NM 87499

4. LOCATION OF WELL (Report location clearly and in accordance with applicable requirements)

At surface

1890 FNL 1490 FWL

At proposed prod. zone same

14. DISTANCE IN MILES AND DIRECTION FROM NEAREST TOWN OR POST OFFICE

12 miles NE from Counselors, NM

BUREAU OF LAND MANAGEMENT
FARMINGTON RESOURCE AREA

15. DISTANCE FROM PROPOSED*

LOCATION TO NEAREST

PROPERTY OR LEASE LINE, FT.

(Also to nearest drlg. unit line, if any)

170' to West

16. NO. OF ACRES IN LEASE

1920

18. DISTANCE FROM PROPOSED LOCATION*
TO NEAREST WELL, DRILLING, COMPLETED,
OR APPLIED FOR, ON THIS LEASE, FT.

310'

19. PROPOSED DEPTH

3265'

21. ELEVATIONS (Show whether DF, RT, GR, etc.)

6348 GR

DRILLING OPERATIONS AUTHORIZED ARE
SUBJECT TO COMPLIANCE WITH ATTACHED

22. APPROX. DATE WORK WILL START*

as soon as possible
procedural review pursuant to 43 CFR 3165.3
and appeal pursuant to 43 CFR 3165.4.

SIZE OF HOLE	SIZE OF CASING	WEIGHT PER FOOT	SETTING DEPTH	QUANTITY OF CEMENT
12 1/2	8 5/8	24	125	75 sx (88 cu.ft.)
6 3/4	4 1/2	10.5	3265	420 sx (609 cu.ft.)

Propose to drill with mud, run mechanical logs, selectively perforate, and foam frac.

A 10" 3000 psi WP and 6000 psi test double gate BOP with blind and pipe rams will be used for blowout prevention.

The gas is dedicated to El Paso Natural Gas Company.

IN ABOVE SPACE DESCRIBE PROPOSED PROGRAM: If proposal is to deepen or plug back, give data on present productive zone and proposed new productive zone. If proposal is to drill or deepen directionally, give pertinent data on subsurface locations and measurements and true vertical depths. Give blowout prevention program, if any.

24.

SIGNED

CURTIS J. LITTLE

TITLE Operator

DATE 9/6/85

(This space for Federal or State office use)

PERMIT NO.

APPROVAL DATE

APPROVED
AS AMENDED

APPROVED BY

TITLE

DATE

CONDITIONS OF APPROVAL, IF ANY:

SEP 26 1985

/s/ J. Stan McKee

M. MILLENBACH
AREA MANAGER

*See Instructions On Reverse Side

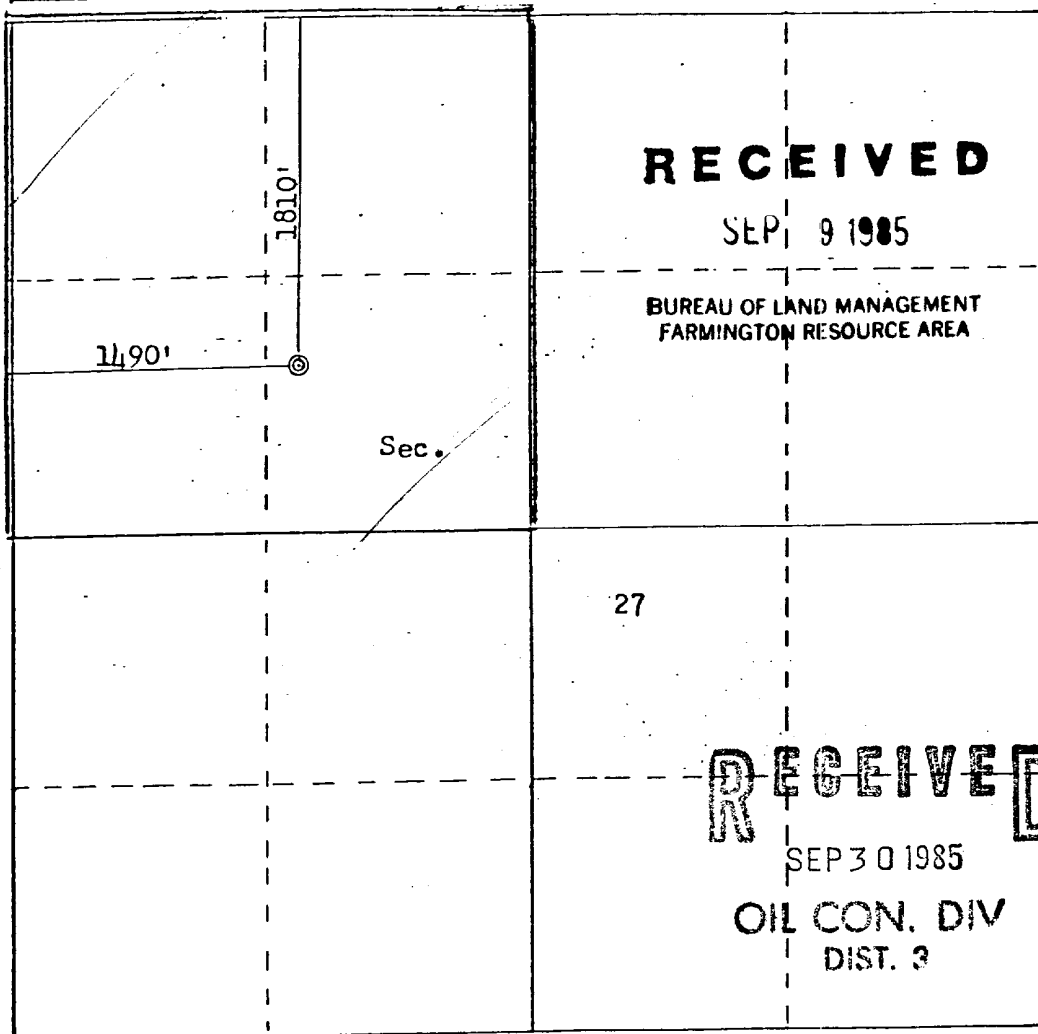
NMOCC

**NEW MEXICO OIL CONSERVATION COMMISSION
WELL LOCATION AND ACREAGE DEDICATION PLAT**

Form C-102
Supersedes C-128
Effective 1-1-65

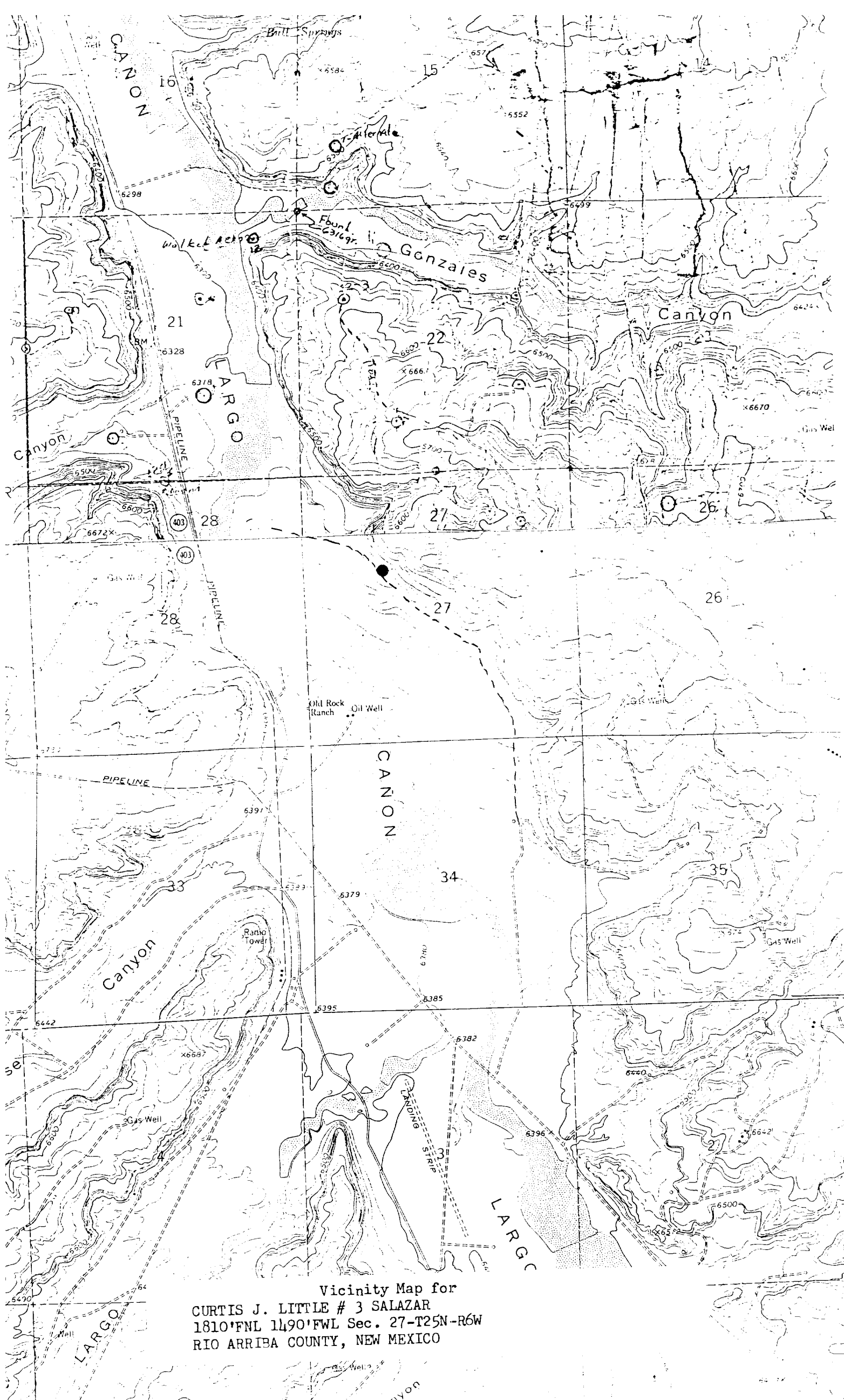
All distances must be from the outer boundaries of the Section.

Operator CURTIS J. LITTLE			Lease SALAZAR		Well No. 13
Unit Letter F	Section 27	Township 25N	Range 6W	County Rio Arriba	
Actual Footage Location of Well:					
1810 feet from the North line and		1490 feet from the West line			
Ground Level Elev: 6348	Producing Formation Pictured Cliffs	Pool South Blanco PC Extension	Dedicated Acreage: 160 / 160 Acres		
<p>1. Outline the acreage dedicated to the subject well by colored pencil or hachure marks on the plat below.</p> <p>2. If more than one lease is dedicated to the well, outline each and identify the ownership thereof (both as to working interest and royalty).</p> <p>3. If more than one lease of different ownership is dedicated to the well, have the interests of all owners been consolidated by communitization, unitization, force-pooling, etc?</p> <p><input type="checkbox"/> Yes <input type="checkbox"/> No If answer is "yes," type of consolidation _____</p> <p>If answer is "no," list the owners and tract descriptions which have actually been consolidated. (Use reverse side of this form if necessary.) _____</p> <p>No allowable will be assigned to the well until all interests have been consolidated (by communitization, unitization, forced-pooling, or otherwise) or until a non-standard unit, eliminating such interests, has been approved by the Commission.</p>					



Scale: 1"=1000'

CERTIFICATION	
I hereby certify that the information contained herein is true and complete to the best of my knowledge and belief.	
Name	<i>Curtis J. Little</i>
Position	Operator
Company	CURTIS J. LITTLE
Date	9/6/85
I hereby certify that the well location shown on this plat was plotted from field notes of actual surveys made by me or under my supervision, and that the same is true and correct to the best of my knowledge and belief.	
Date Surveyed	August 21, 1985
Registered Professional Engineer and Land Surveyor	<i>Fred B. Kerr Jr.</i>
Certificate No.	3950



Vicinity Map for
CURTIS J. LITTLE # 3 SALAZAR
1810'FNL 1490'FWL Sec. 27-T25N-R6W
RIO ARRIBA COUNTY, NEW MEXICO