

UNITED STATES  
DEPARTMENT OF THE INTERIOR  
GEOLOGICAL SURVEY

## APPLICATION FOR PERMIT TO DRILL, DEEPEN, OR PLUG BACK

## 1a. TYPE OF WORK

DRILL ☒DEEPEN ☐PLUG BACK ☐

## b. TYPE OF WELL

OIL  
WELL ☐GAS  
WELL ☒

OTHER

SINGLE  
ZONE ☒MULTIPLE  
ZONE ☐

## 2. NAME OF OPERATOR

DUGAN PRODUCTION CORP.

## 3. ADDRESS OF OPERATOR

P O Box 208, Farmington, NM 87499

## 4. LOCATION OF WELL (Report location clearly and in accordance with any State requirements.)

At surface

1100' FSL - 1600' FEL

At proposed prod. zone

## 14. DISTANCE IN MILES AND DIRECTION FROM NEAREST TOWN OR POST OFFICE

11 miles north of Lindrith, NM

BUREAU OF LAND MANAGEMENT  
FARMINGTON RESOURCE AREA

## 15. DISTANCE FROM PROPOSED\*

LOCATION TO NEAREST

PROPERTY OR LEASE LINE, FT.

(Also to nearest drg. unit line, if any)

1100' South

## 16. NO. OF ACRES IN LEASE

2519.29

## 17. NO. OF ACRES ASSIGNED

TO THIS WELL

320

## 18. DISTANCE FROM PROPOSED LOCATION\*

TO NEAREST WELL, DRILLING, COMPLETED

OR APPLIED FOR, ON THIS LEASE, FT.

approx. 1 mile

from DPC's

Divide #1

## 19. PROPOSED DEPTH

8430'

## 20. ROTARY OR CABLE TOOLS

Rotary

## 21. ELEVATIONS (Show whether DF, RT, GR, etc.)

7595' GL; 7607' RKB

## DRILLING OPERATIONS AUTHORIZED ARE

SUBJECT TO COMPLIANCE WITH ATTACHED

"GENERAL REQUIREMENTS" IMPLEMENTING PROGRAM

## 22. APPROX. DATE WORK WILL START\*

ASAP

This action is subject to technical and procedural review pursuant to 43 CFR 3165.3 and appeal pursuant to 43 CFR 3165.4.

SIZE OF HOLE	SIZE OF CASING	WEIGHT PER FOOT	SETTING DEPTH	
12-1/4"	9-5/8"	36#	200'	150 cf circ. to surface
7-7/8"	4-1/2"	10.5#	8430'	2143 cf circ. to surface

Plan to drill a 12-1/4" hole and set 200' of 9-5/8" OD, 36#, J-55 surface casing; then plan to drill a 7-7/8" hole to total depth with gel-water-mud program to test Dakota formation. Plan to run IES and CDL logs. If deemed productive, will run 4-1/2", 10.5#, J-55 casing, selectively perforate, frac, clean out after frac and complete well.

GAS IS NOT DEDICATED.

IN ABOVE SPACE DESCRIBE PROPOSED PROGRAM: If proposal is to deepen or plug back, give data on present productive zone and proposed new productive zone. If proposal is to drill or deepen directionally, give pertinent data on subsurface locations and measured and true vertical depths. Give blowout preventer program, if any.

## 24.

SIGNED

*Sherman E. Dugan*  
Sherman E. Dugan

TITLE

Geologist

DATE

9-9-85

(This space for Federal or State office use)

PERMIT NO.

APPROVAL DATE

APPROVED BY

TITLE

CONDITIONS OF APPROVAL, IF ANY:

APPROVED  
AS AMENDED

OCT 09 1985

/s/ L. Stan McKee

M. MILLENBACH  
AREA MANAGER

\*See Instructions On Reverse Side

NMOCC

## OIL CONSERVATION DIVISION

P. O. BOX 2088

SANTA FE, NEW MEXICO 87501

Form C-102  
Revised 10-1-78STATE OF NEW MEXICO  
ENERGY AND MINERALS DEPARTMENT

All distances must be from the outer boundaries of the Section.

Operator Dugan Production Corporation		Lease Tapacitos		Well No. 4
Unit Letter 0	Section 36	Township 26 North	Range 2 West	County Rio Arriba
Actual Footage Location of Well: 1100 feet from the South line and 1600 feet from the East line				
Ground Level Elev. 7295	Producing Formation Dakota	Pool Basin Dakota	Dedicated Acreage: 320 Acres	

1. Outline the acreage dedicated to the subject well by colored pencil or hachure marks on the plat below.

2. If more than one lease is dedicated to the well, outline each and identify the ownership thereof (both as to working interest and royalty).

3. If more than one lease of different ownership is dedicated to the well, have the interests of all owners been consolidated by communitization, unitization, force-pooling, etc?

☐ Yes ☐ No If answer is "yes," type of consolidation \_\_\_\_\_

If answer is "no," list the owners and tract descriptions which have actually been consolidated. (Use reverse side of this form if necessary.) \_\_\_\_\_

No allowable will be assigned to the well until all interests have been consolidated (by communitization, unitization, forced-pooling, or otherwise) or until a non-standard unit, eliminating such interests, has been approved by the Division.

RECEIVED

SEP 17 1985

BUREAU OF LAND MANAGEMENT  
FARMINGTON RESOURCE AREA

SEC. 36

RECEIVED

OCT 15 1985

OIL CON. DIV.  
DIST. 3

50% Dugan Prod.  
30% Bob Andes  
20% Earl Lang

NM 7993

1100

## CERTIFICATION

I hereby certify that the information contained herein is true and complete to the best of my knowledge and belief.

*Sherman E. Dugan*

Name

Sherman E. Dugan

Position

Geologist

Company

Dugan Production Corp.

Date

9-9-85

EDGAR L. RISENHOOVER, REGISTERED LAND SURVEYOR, NEW MEXICO, 5979

Date Surveyed

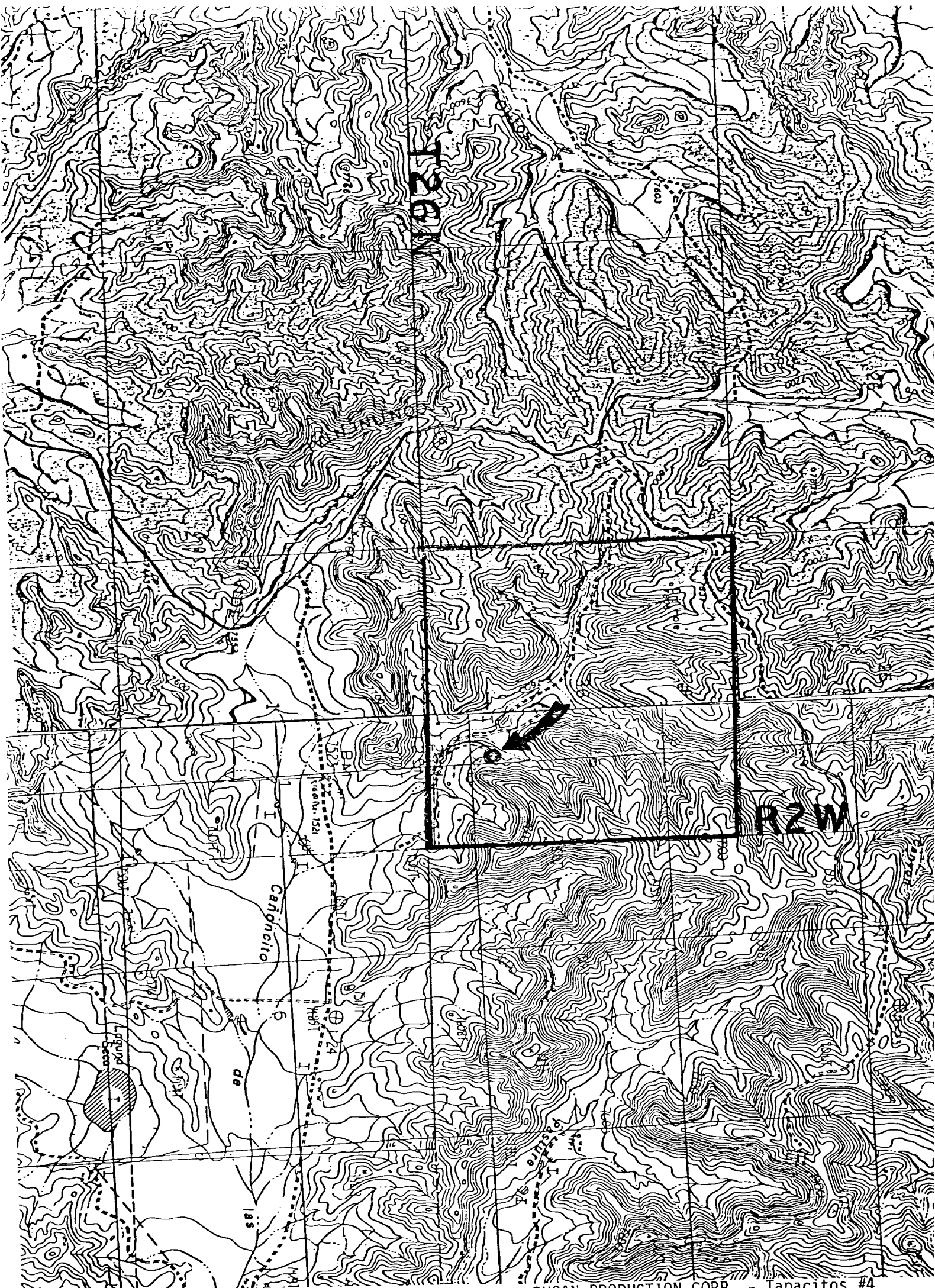
September 2, 1985

Registered Professional Engineer  
and/or Land Surveyor

*Edgar L. Risenhoover*

Certificate No. 5979

Edgar L. Risenhoover, L.S.



DUGAN PRODUCTION CORP. - Tapacitos #4  
Existing Roads ----- Exhibit E

Distance from nearest town or reference pt.  
11 miles North of Lindrith, NM

Type of surface dirt

Conditions good

Other

DUGAN PRODUCTION CORP. - Tapacitos #4  
Planned Access Road(s) ~~~~~ Exhibit E

Width 20' Maximum grades 2%

Drainage design as needed

Cuts & Fills

Surfacing material

Turnouts

Culverts

Gates

Cattleguards

Fence cuts