

UNITED STATES  
DEPARTMENT OF THE INTERIOR  
BUREAU OF LAND MANAGEMENT

RECEIVED  
NOV 15 1985

SUBMIT IN TRIPLICATE\*

Form approved,  
Budget Bureau No. 1004-0136  
Expires August 31, 1985

APPLICATION FOR PERMIT TO DRILL, DEEPEN OR PLUG BACK

1A. TYPE OF WORK

DRILL ☒

DEEPEN ☐

PLUG BACK ☐

B. TYPE OF WELL

OIL  
WELL ☒

GAS  
WELL ☐

OTHER

SINGLE  
ZONE ☒

MULTIPLE  
ZONE ☐

2. NAME OF OPERATOR

Amoco Production Co.

3. ADDRESS OF OPERATOR

501 Airport Drive, Farmington, N M 87401

4. LOCATION OF WELL (Report location clearly and in accordance with any State requirements.)\*

At surface

765' FSL X 1120' FEL

At proposed prod. zone

Same

14. DISTANCE IN MILES AND DIRECTION FROM NEAREST TOWN OR POST OFFICE\*

41 miles Northeast of Counselors, New Mexico

15. DISTANCE FROM PROPOSED\*

LOCATION TO NEAREST  
PROPERTY OR LEASE LINE, FT.  
(Also to nearest drlg. unit line, if any)

790'

16. NO. OF ACRES IN LEASE

2566.44

17. NO. OF ACRES ASSIGNED  
TO THIS WELL

40

18. DISTANCE FROM PROPOSED LOCATION\*  
TO NEAREST WELL, DRILLING, COMPLETED,  
OR APPLIED FOR, ON THIS LEASE, FT.

2800' N

19. PROPOSED DEPTH

8530'

20. ROTARY OR CABLE TOOLS

Rotary

21. ELEVATIONS (Show whether DF, RT, GR, etc.)

DRILLING OPERATIONS AUTHORIZED ARE  
SUBJECT TO COMPLIANCE WITH ATTACHED  
"GENERAL REQUIREMENTS".

2484' GR 7479

22. APPROX. DATE WORK WILL START\*

As soon as permitted

PROPOSED CASING AND CEMENTING PROGRAM

This action is subject to technical and  
procedural review pursuant to 43 CFR 3165.3  
and appeal pursuant to 43 CFR 3165.4.

SIZE OF HOLE	SIZE OF CASING	WEIGHT PER FOOT	SETTING DEPTH
12 1/4"	8 5/8"	24# J-55	330'
7 7/8"	5 1/2"	15.5# K-55	8530'

380 c.f. class B 2% CaCl<sub>2</sub>  
1st-700 c.f. 65:35:6 class  
B 2 ppsk tuffplug 10.9  
gal/sk 12 ppg top @ 5900'  
Tail w/650 c.f. 50:50:2  
class B, 10% salt, 7 Fla,  
25#/sk celloflake, 5.24  
gal/sk 13.9 ppg. Top @  
7500'.  
2nd-500 c.f. 65:35:6 class  
B 10.9 gal/sk, 12 ppg  
Top @ Surface.

(See attached supplement)

The gas from this well is dedicated  
to Northwest Pipeline.

RECEIVED  
NOV 13 1985  
OIL CON. DIV.  
DIST. 3

IN ABOVE SPACE DESCRIBE PROPOSED PROGRAM: If proposal is to deepen or plug back, give data on present productive zone and proposed new productive zone. If proposal is to drill or deepen directionally, give pertinent data on subsurface locations and measured and true vertical depths. Give blowout preventer program, if any.

24. SIGNED B.D. Shaw TITLE Adm. Supervisor DATE 9-12-85

(This space for Federal or State office use)

PERMIT NO. \_\_\_\_\_ APPROVAL DATE \_\_\_\_\_

APPROVED BY \_\_\_\_\_ TITLE \_\_\_\_\_  
CONDITIONS OF APPROVAL, IF ANY:

APPROVED  
AS AMENDED

NOV 08 1985

Carlton D. Hiner  
M. MILLENBACH  
AREA MANAGER

NMOCC

\*See Instructions On Reverse Side

## OIL CONSERVATION DIVISION

STATE OF NEW MEXICO  
ENERGY AND MINERALS DEPARTMENTP. O. BOX 2088  
SANTA FE, NEW MEXICO 87501Form C-102  
Revised 10-1-73

All distances must be from the outer boundaries of the Section.

Operator AMOCO PRODUCTION COMPANY		Lease JICARILLA APACHE TRIBAL "A" 118		Well No. 17
Unit Letter P	Section 26	Township 26 NORTH	Range 3 WEST	County RIO ARRIBA
Actual Footage Location of Well: 765 feet from the SOUTH line and 1120 feet from the EAST line				
Ground Level Elev. 7479	Producing Formation Gallup-Dakota	Pool Ojito Gallup-Dakota	Dedicated Acreage 40 Acres	

1. Outline the acreage dedicated to the subject well by colored pencil or hatchure marks on the plat below.
2. If more than one lease is dedicated to the well, outline each and identify the ownership thereof (both as to working interest and royalty).
3. If more than one lease of different ownership is dedicated to the well, have the interests of all owners been consolidated by communitization, unitization, force-pooling, etc?

☐ Yes ☐ No If answer is "yes," type of consolidation \_\_\_\_\_

If answer is "no," list the owners and tract descriptions which have actually been consolidated. (Use reverse side of this form if necessary.) \_\_\_\_\_

No allowable will be assigned to the well until all interests have been consolidated (by communitization, unitization, forced-pooling, or otherwise) or until a non-standard unit, eliminating such interests, has been approved by the Division.


BUREAU OF LAND MANAGEMENT  
FARMINGTON RESOURCE AREA

## CERTIFICATION

I hereby certify that the information contained herein is true and complete to the best of my knowledge and belief.

Name

B. D. Shaw

Position

Adm. Supervisor

Company

Amoco Production Co.

Date

September 8, 1985

I hereby certify that the location shown on this plat was placed from field notes of actual surveys made by me or under my supervision and that the same is true and correct to the best of my knowledge and belief.



Date Surveyed

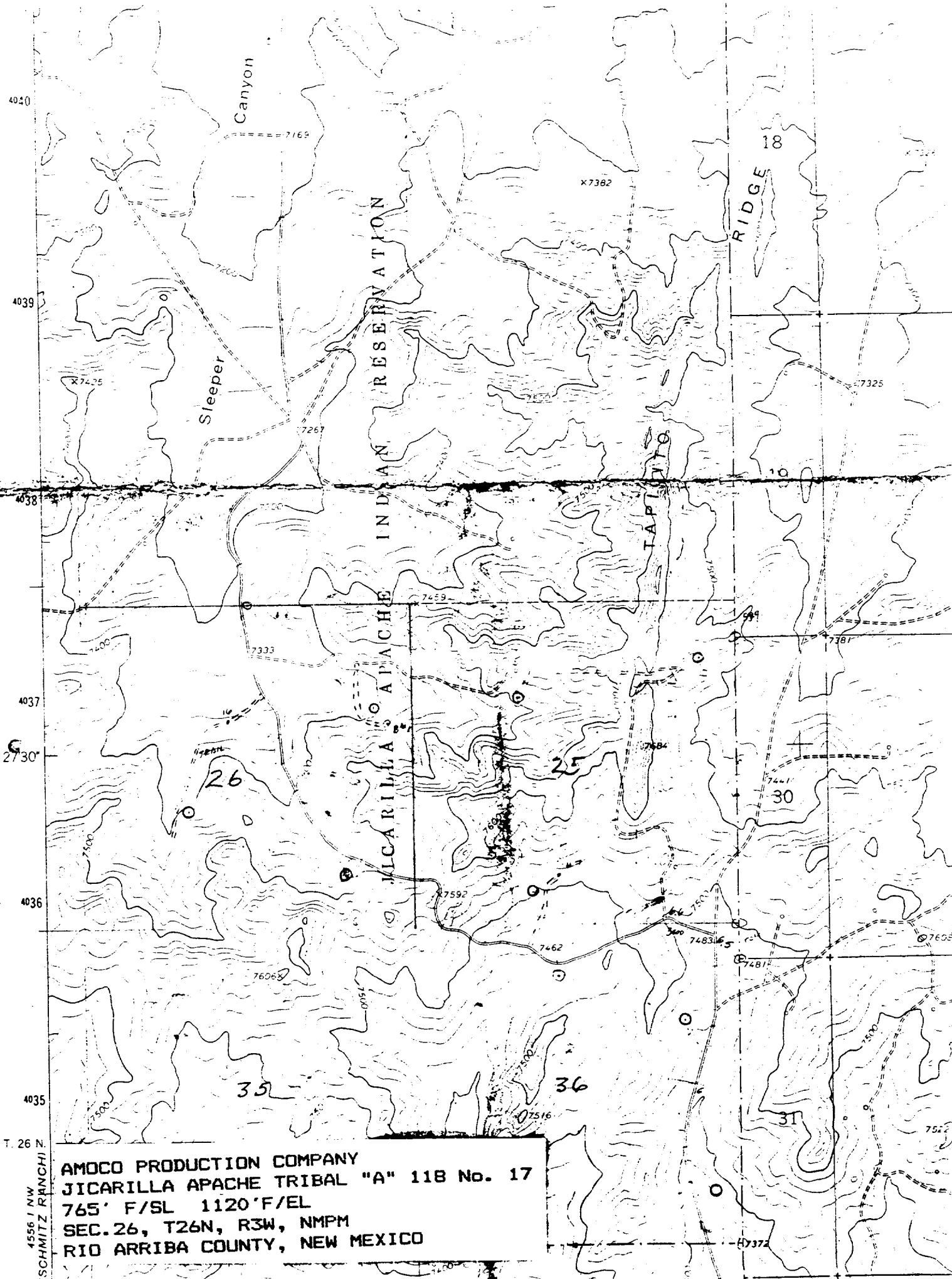
September 17, 1985

Registered Professional Engineer  
and/or Land Surveyor  
Gary D. Vann

Certificate No.

7016

0 330 660 990 1320 1650 1980 2310 2640 2970 3300 3630 3960 4290 4620 4950 5280 5610 5940 6270 6600



AMOCO PRODUCTION COMPANY  
JICARILLA APACHE TRIBAL "A" 118 No. 17  
765' F/SL 1120' F/EL  
SEC. 26, T26N, R3W, NMPM  
RIO ARriba COUNTY, NEW MEXICO