

UNITED STATES
DEPARTMENT OF THE INTERIOR
BUREAU OF LAND MANAGEMENT

CONFIDENTIAL *out*

01 MAR 14 2001

NMNM28709

SUNDRY NOTICES AND REPORTS ON WELLS

Do not use this form for proposals to drill or to deepen or reentry to a different reservoir.

Use "APPLICATION FOR PERMIT--" for such proposals

SUBMIT IN TRIPLICATE

1. Type of Well
☐ Oil Well ☒ Gas Well ☐ Other

2. Name of Operator
McElvain Oil and Gas Properties, Inc.

3. Address and Telephone No.
1050 17th Street Suite 1800 Denver, CO 80265 (303)-893-0933

4. Location of Well (Footage, Sec., T., R., M., or Survey Description)
1780' FSL & 2120' FWL Section 35 T26N, R2W NMPM K

5. Lease Designation and Serial No.

6. If Indian, Allottee or Tribe Name

7. If Unit or CA, Agreement Designation

8. Well Name and No.
Divide #3

9. API Well No.
30-039-24048

10. Field and Pool, or Exploratory Area
Blanco Mesaverde

11. County or Parish, State
Rio Arriba, NM

12. CHECK APPROPRIATE BOX(s) TO INDICATE NATURE OF NOTICE, REPORT, OR OTHER DATA

TYPE OF SUBMISSION

☒ Notice of Intent
☐ Subsequent Report
☐ Final Abandonment Notice

TYPE OF ACTION

☒ Abandonment
☒ Recompletion
☐ Plugging Back
☐ Casing Repair
☐ Altering Casing
☐ Other _____
☐ Change of Plans
☐ New Construction
☐ Non-Routine Fracturing
☐ Water Shut-Off
☐ Conversion to Injection
☐ Dispose Water

13. Describe Proposed or Completed Operations (Clearly state all pertinent details, and give pertinent dates, including estimated date of starting any proposed work. If well is directionally drilled, give subsurface locations and measured and true vertical depths for all markers and zones pertinent to this work.)

McElvain proposes to permanently abandon the ~~Callup~~ *Gavilan Mancos* by placing a CIBP at 7125', pressure testing to 500 psig and capping with 50' of cement with a dump bailer.

A bond log will be run to determine cement tops from the CIBP to the DV tool at 4082'.

The Mesaverde will then be selectively perforated and fracture stimulated in sands in the interval 5753'-6126'.



14. I hereby certify the foregoing is true and correct

Signed *John D. Steuble*

Title Engineering Manager

Date March 8, 2001

(This space for Federal or State office use)

/s/ Patricia M. Hester

Lands and Mineral Resources

Approved by _____
Conditions of approval, if any: _____

Title _____

Date **MAR 12 2001**

CONFIDENTIAL**District I**

1625 N. French Dr., Hobbs, NM 88240

District II

811 South First, Artesia, NM 88210

District III

1000 Rio Brazos Rd., Aztec, NM 87410

District IV

2040 South Pacheco, Santa Fe, NM 87505

State of New Mexico
Energy, Minerals & Natural Resources Department

Form C-102

Revised August 15, 2000

OIL CONSERVATION DIVISION
2040 South Pacheco
Santa Fe, NM 87505

Submit to Appropriate District Office

State Lease - 4 Copies

Fee Lease - 3 Copies

☐ AMENDED REPORT**WELL LOCATION AND ACREAGE DEDICATION PLAT**

¹ API Number 30-039-24048		² Pool Code 72319	³ Pool Name Blanco Mesaverde
⁴ Property Code	⁵ Property Name Divide		⁶ Well Number 3-35
⁷ OGRID No. 22044	⁸ Operator Name McElvain Oil & Gas Properties, Inc.		⁹ Elevation 7695'

¹⁰ Surface Location

UL or lot no.	Section	Township	Range	Lot Idn	Feet from the	North/South line	Feet from the	East/West line	County
K	35	26N	2W		1780	South	2120	West	Rio Arriba

¹¹ Bottom Hole Location If Different From Surface

UL or lot no.	Section	Township	Range	Lot Idn	Feet from the	North/South line	Feet from the	East/West line	County

¹² Dedicated Acres 320	¹³ Joint or Infill	¹⁴ Consolidation Code	¹⁵ Order No.
--------------------------------------	-------------------------------	----------------------------------	-------------------------

NO ALLOWABLE WILL BE ASSIGNED TO THIS COMPLETION UNTIL ALL INTERESTS HAVE BEEN CONSOLIDATED OR A NON-STANDARD UNIT HAS BEEN APPROVED BY THE DIVISION

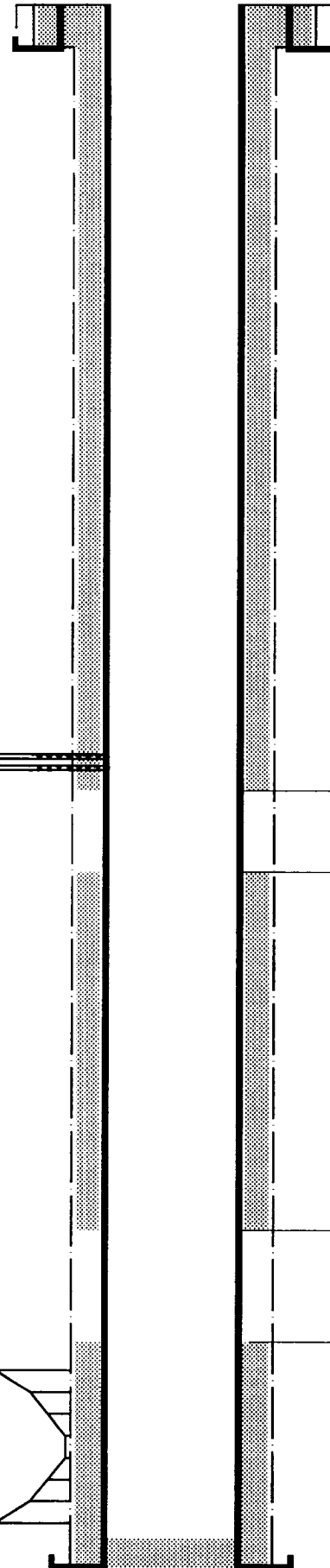
¹⁶	¹⁷ OPERATOR CERTIFICATION I hereby certify that the information contained herein is true and complete to the best of my knowledge and belief. Signature John D. Steuble Printed Name Engineering Manager Title March 8, 2001 Date
	¹⁸ SURVEYOR CERTIFICATION I hereby certify that the well location shown on this plat was plotted from field notes of actual surveys made by me or under my supervision, and that the same is true and correct to the best of my belief.
	Date of Survey Signature and Seal of Professional Surveyor:
	Certificate Number

CONFIDENTIAL

DIVIDE #3
NE/SW Section 35 T26N-R2W
1780' FSL & 2120' FWL
Rio Arriba County NM
Wellbore Diagram

(SQZD) 96 Perfs 3890-3914
(SQZD) 88 Perfs 3950-3972

58 Perfs 7130-7923 (LE)



SURFACE CASING in 12 1/4" hole
9 5/8" 36# J-55 @ 226'
147.5 cf Class 8 +2% CaCl
Circulated to Surface

625 sx 65-35 POZ +12% Gel
50 sx 50-50 POZ +2% Gel
1533 cu ft CIRCULATED to SURFACE

4082' DV Tool

TOC @ 4515' (Calcd @ 70%)

125 sx 65-35 POZ +12% Gel
275 sx 50-50 POZ +2% Gel
678 cu ft

6393' DV Tool

TOC @ 6981' (Calc @ 70%)

PBTD: 8000'

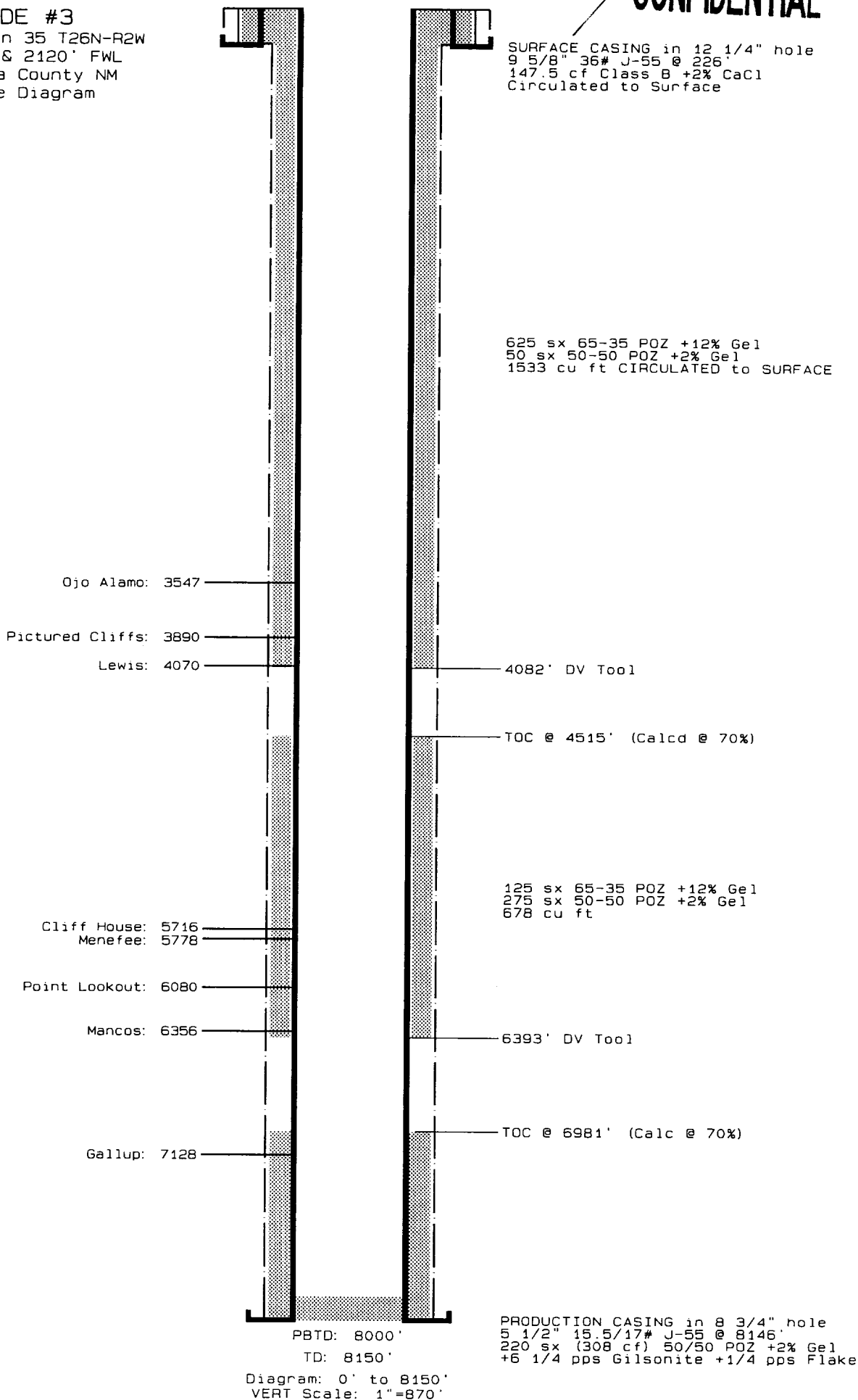
TD: 8150'

Diagram: 0' to 8150'
VERT Scale: 1"=870'

PRODUCTION CASING in 8 3/4" hole
5 1/2" 15.5/17# J-55 @ 8146'
220 sx (308 cf) 50/50 POZ +2% Gel
+6 1/4 pps Gilsonite +1/4 pps Flake

CONFIDENTIAL

DIVIDE #3
NE/SW Section 35 T26N-R2W
1780' FSL & 2120' FWL
Rio Arriba County NM
Wellbore Diagram



UNITED STATES
DEPARTMENT OF THE INTERIOR
BUREAU OF LAND MANAGEMENT

CONFIDENTIAL

01 MAR 16 2:11:33

SUNDRY NOTICES AND REPORTS ON WELLS

Do not use this form for proposals to drill or to deepen or reentry to a different reservoir.

Use "APPLICATION FOR PERMIT--" for such proposals

SUBMIT IN TRIPLICATE

1. Type of Well
☐ Oil Well ☒ Gas Well ☐ Other

2. Name of Operator
McElvain Oil and Gas Properties, Inc.

3. Address and Telephone No.
1050 17th Street Suite 1800 Denver, CO 80265 (303)-893-0933

4. Location of Well (Footage, Sec., T., R., M., or Survey Description)
1780' FSL & 2120' FWL Section 35 T26N, R2W NMPM

5. Lease Designation and Serial No.

NMNM28709

6. If Indian, Allottee or Tribe Name

7. If Unit or CA, Agreement Designation

8. Well Name and No.

Divide #3

9. API Well No.

30-039-24048

10. Field and Pool, or Exploratory Area

Blanco Mesaverde

11. County or Parish, State

Rio Arriba, NM

12 CHECK APPROPRIATE BOX(s) TO INDICATE NATURE OF NOTICE, REPORT, OR OTHER DATA

TYPE OF SUBMISSION

- ☒ Notice of Intent
☐ Subsequent Report
☐ Final Abandonment Notice

TYPE OF ACTION

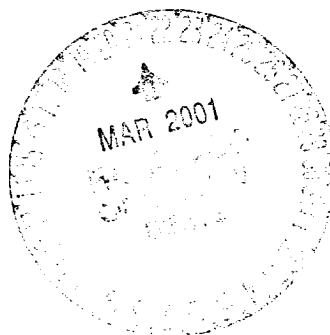
- ☒ Abandonment
☒ Recompletion
☐ Plugging Back
☐ Casing Repair
☐ Altering Casing
☐ Other _____
- ☐ Change of Plans
☐ New Construction
☐ Non-Routine Fracturing
☐ Water Shut-Off
☐ Conversion to Injection
☐ Dispose Water

13. Describe Proposed or Completed Operations (Clearly state all pertinent details, and give pertinent dates, including estimated date of starting any proposed work. If well is directionally drilled, give subsurface locations and measured and true vertical depths for all markers and zones pertinent to this work.)

Gavilan Murgos
McElvain proposes to permanently abandon the ~~Catup~~ by placing a CIBP at 7125', pressure testing to 500 psig and capping with 50' of cement with a dump bailer.

A bond log will be run to determine cement tops from the CIBP to the DV tool at 4082'.

The Mesaverde will then be selectively perforated and fracture stimulated in sands in the interval 5753'-6126'.



14. I hereby certify the foregoing is true and correct

Signed John S. Steubke

Title Engineering Manager

Date March 8, 2001

(This space for Federal or State office use)

Is/ Patricia M. Hester

Approved by _____
Conditions of approval, if any:

Title Lands and Mineral Resources

Date MAR 12 2001

CONFIDENTIAL**District I**

1625 N. French Dr., Hobbs, NM 88240

District II

811 South First, Artesia, NM 88210

District III

1000 Rio Brazos Rd., Aztec, NM 87410

District IV

2040 South Pacheco, Santa Fe, NM 87505

State of New Mexico

Energy, Minerals & Natural Resources Department

Form C-102

Revised August 15, 2000

OIL CONSERVATION DIVISION

2040 South Pacheco

Santa Fe, NM 87505

Submit to Appropriate District Office

State Lease - 4 Copies

Fee Lease - 3 Copies

☐ AMENDED REPORT**WELL LOCATION AND ACREAGE DEDICATION PLAT**

¹ API Number 30-039-24048	² Pool Code 72319	³ Pool Name Blanco Mesaverde
⁴ Property Code	⁵ Property Name Divide	⁶ Well Number 3-35
⁷ OGRID No. 22044	⁸ Operator Name McElvain Oil & Gas Properties, Inc.	⁹ Elevation 7695'

¹⁰ Surface Location

UL or lot no.	Section	Township	Range	Lot Idn	Feet from the	North/South line	Feet from the	East/West line	County
K	35	26N	2W		1780	South	2120	West	Rio Arriba

¹¹ Bottom Hole Location If Different From Surface

UL or lot no.	Section	Township	Range	Lot Idn	Feet from the	North/South line	Feet from the	East/West line	County

¹² Dedicated Acres 320	¹³ Joint or Infill	¹⁴ Consolidation Code	¹⁵ Order No.
--------------------------------------	-------------------------------	----------------------------------	-------------------------

NO ALLOWABLE WILL BE ASSIGNED TO THIS COMPLETION UNTIL ALL INTERESTS HAVE BEEN CONSOLIDATED OR A NON-STANDARD UNIT HAS BEEN APPROVED BY THE DIVISION

¹⁶	¹⁷ OPERATOR CERTIFICATION I hereby certify that the information contained herein is true and complete to the best of my knowledge and belief. Signature John D. Steuble Printed Name Engineering Manager Title March 8, 2001 Date
	¹⁸ SURVEYOR CERTIFICATION I hereby certify that the well location shown on this plat was plotted from field notes of actual surveys made by me or under my supervision, and that the same is true and correct to the best of my belief.
	Date of Survey Signature and Seal of Professional Surveyor:
	Certificate Number

CONFIDENTIAL

DIVIDE #3
NE/SW Section 35 T26N-R2W
1780' FSL & 2120' FWL
Rio Arriba County NM
Wellbore Diagram

(SQZD) 96 Perfs 3890-3914
(SQZD) 88 Perfs 3950-3972

58 Perfs 7130-7923 (LE)

SURFACE CASING in 12 1/4" hole
9 5/8" 36# J-55 @ 226'
147.5 cf Class B +2% CaCl
Circulated to Surface

625 sx 65-35 POZ +12% Gel
50 sx 50-50 POZ +2% Gel
1533 cu ft CIRCULATED to SURFACE

4082' DV Tool

TOC @ 4515' (Calcd @ 70%)

125 sx 65-35 POZ +12% Gel
275 sx 50-50 POZ +2% Gel
678 cu ft

6393' DV Tool

TOC @ 6981' (Calc @ 70%)

PBTD: 8000'

TD: 8150'

PRODUCTION CASING in 8 3/4" hole
5 1/2" 15.5/17# J-55 @ 8146'
220 sx (308 cf) 50/50 POZ +2% Gel
+6 1/4 pps Gilsonite +1/4 pps Flake

Diagram: 0' to 8150'
VER Scale: 1"=870'

CONFIDENTIAL

DIVIDE #3
NE/SW Section 35 T26N-R2W
1780' FSL & 2120' FWL
Rio Arriba County NM
Wellbore Diagram

Ojo Alamo: 3547
Pictured Cliffs: 3890
Lewis: 4070

Cliff House: 5716
Menefee: 5778

Point Lookout: 6080
Mancos: 6356

Gallup: 7128

SURFACE CASING in 12 1/4" hole
9 5/8" 36# J-55 @ 226'
147.5 cf Class B +2% CaCl
Circulated to Surface

625 sx 65-35 POZ +12% Gel
50 sx 50-50 POZ +2% Gel
1533 cu ft CIRCULATED to SURFACE

4082' DV Tool

TOC @ 4515' (Calcd @ 70%)

125 sx 65-35 POZ +12% Gel
275 sx 50-50 POZ +2% Gel
678 cu ft

6393' DV Tool

TOC @ 6981' (Calc @ 70%)

PBTD: 8000'

TD: 8150'

Diagram: 0' to 8150'
VERT Scale: 1"=870'

PRODUCTION CASING in 8 3/4" hole
5 1/2" 15.5/17# J-55 @ 8146'
220 sx (308 cf) 50/50 POZ +2% Gel
+6 1/4 pps Gilsonite +1/4 pps Flake