

UNITED STATES  
DEPARTMENT OF THE INTERIOR  
BUREAU OF LAND MANAGEMENT

APPLICATION FOR PERMIT TO DRILL, DEEPEN, OR PLUG BACK

1a. TYPE OF WORK DRILL ☒ DEEPEN ☐ PLUG BACK ☐

b. TYPE OF WELL  
OIL WELL ☒ GAS WELL ☐ OTHER ☐  
SINGLE ZONE ☒ MULTIPLE ZONE ☐

2. NAME OF OPERATOR  
Merrion Oil & Gas Corporation

3. ADDRESS OF OPERATOR

P. O. Box 840, Farmington, New Mexico 87499

4. LOCATION OF WELL (Report location clearly and in accordance with any State requirements)  
At surface

1650' FNL and 750' FEL

At proposed prod. zone

Same

14. DISTANCE IN MILES AND DIRECTION FROM NEAREST TOWN OR POST OFFICE\*

12 miles North of Lindrith

15. DISTANCE FROM PROPOSED\*  
LOCATION TO NEAREST  
PROPERTY OR LEASE LINE, FT.  
(Also to nearest drlg. unit line, if any) 750'

18. DISTANCE FROM PROPOSED LOCATION\*  
TO NEAREST WELL, DRILLING, COMPLETED,  
OR APPLIED FOR, ON THIS LEASE, FT. N/A

16. NO. OF ACRES IN LEASE

120 2004

19. PROPOSED DEPTH  
7975'

17. NO. OF ACRES ASSIGNED  
TO THIS WELL

160/8344

20. ROTARY OR CABLE TOOLS  
Rotary

21. ELEVATIONS (Show whether DF, RT, GR, or)

7525' GL

DRILLING OPERATIONS AUTHORIZED ARE  
SUBJECT TO COMPLIANCE WITH ATTACHED

"GENERAL REQUIREMENTS" CEMENTING PROGRAM

22. APPROX. DATE WORK WILL START\*

Fall/1986

SIZE OF HOLE	SIZE OF CASING	WEIGHT PER FOOT	SETTING DEPTH	QUANTITY OF CEMENT
12-1/4"	9-5/8", J-55	32 #/ft.	250'	125 sx Class B (148 cu. ft.)
8-3/4"				
7-7/8"	5-1/2", J-55	15.5 & 17 #/ft.	7975	as below

Propose to drill 12-1/4" hole to 250' and set 237' ± of 9-5/8", 32 #/ft, J-55 surface casing with 125 sx Class B (148 cu. ft.) cement, 3% CaCl<sub>2</sub>. Will drill 8-3/4" hole to approximately 5610'. Will reduce to 7-7/8" hole to 7975. Will run open hole logs. If well appears productive, will run 5-1/2", 15.5 and 17 #/ft. J-55 casing to TD and cement in three stages. 1st Stage - 250 sx Class H 2% gel (305 cu. ft.) to cover Gallup. Top of cement estimated at 6275 ft. 2nd Stage - set stage tool at 6275' and cement with 160 sx Class B 2% D-79 (340 cu. ft.) followed by 50 sx Class H (61 cu. ft.) 2% gel to cover Mesaverde. Top of cement estimated at 4975'. Third Stage Tool @ 3950' KB with 150 sx Class B (309 cu. ft.) 2% D-79 followed by 50 sx (61 cu. ft.) Class H 2% gel to cover Pictured Cliffs, Fruitland, Kirtland, and Ojo Alamo. Top of cement estimated at 2500 ft. Will perforate and stimulate the Gallup as necessary. 10" 900 series Double Ram Preventers will be used in drilling. Estimated tops attached.

IN ABOVE SPACE DESCRIBE PROPOSED PROGRAM. If proposal is to deepen or plug back, give data on present productive zone and proposed new productive zone. If proposal is to drill or deepen directionally, give pertinent data on subsurface locations and measured and true vertical depths. Give blowout preventer program, if any.

24.

SIGNED

TITLE Operations Manager

DATE 7/28/86

(This space for Federal or State use)

PERMIT NO.

APPROVAL DATE

APPROVED BY

CONDITIONS OF APPROVAL, IF ANY

TITLE

DATE

APPROVED  
AS AMENDED

AUG 19 1986

/s/ J. Stan McKee

FOR AREA MANAGER

NMOCC

\*See Instructions On Reverse Side

Title 18 U.S.C. Section 1001, makes it a crime for any person knowingly and willfully to make to any department or agency of the United States any false, fictitious or fraudulent statements or representations as to any matter within its jurisdiction.

All distances must be from the outer boundaries of the Section.

Operator <b>MERRION OIL &amp; GAS</b>			Lease <b>Bootstrap Com</b>		Well No. No. <b>1</b>
Unit Letter <b>H</b>	Section <b>31</b>	Township <b>26 North</b>	Range <b>2 West</b>	County <b>Rio Arriba</b>	
Actual Postage Location of Well: (cardinal) <b>1650</b> feet from the <b>North</b> line and <b>750</b> feet from the <b>East</b> line					
Ground Level Elev. <b>7525</b>	Producing Formation <b>Gallup</b>	Pool <b>Undesignated Gallup</b>		Dedicated Acreage: <b>160 183.44</b> acres	

1. Outline the acreage dedicated to the subject well by colored pencil or hatchure marks on the plat below.
2. If more than one lease is dedicated to the well, outline each and identify the ownership thereof (both as to working interest and royalty).
3. If more than one lease of different ownership is dedicated to the well, have the interests of all owners been consolidated by communitization, unitization, force-pooling, etc?

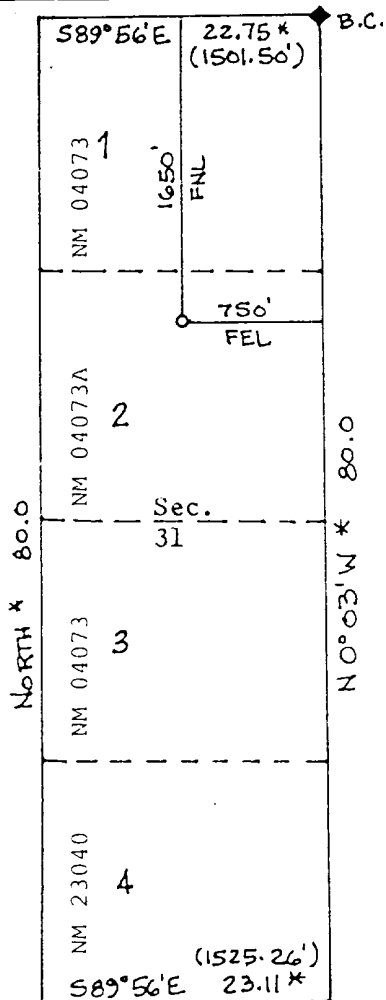
☒ Yes ☐ No If answer is "yes," type of consolidation Communitization

If answer is "no," list the owners and tract descriptions which have actually been consolidated. (Use reverse side of this form if necessary.)

No allowable will be assigned to the well until all interests have been consolidated (by communitization, unitization, forced-pooling, or otherwise) or until a non-standard unit, eliminating such interests, has been approved by the Division.

\*Record GLO plat

♦ Fd. GLO 1916 B.C.



RECEIVED

AUG 06 1986

BUREAU OF LAND MANAGEMENT  
FARMINGTON RESOURCE AREA

CERTIFICATION

I hereby certify that the information contained herein is true and complete to the best of my knowledge and belief.

*Steve S. Dunn*

Name  
Steve S. Dunn  
Position  
Operations Manager  
Company  
Merrion Oil & Gas Corporation  
Date  
7/24/86

RECEIVED

AUG 21 1986

OIL CON. DIV.  
DIST. 3

I hereby certify that the well location shown on this plat was plotted from field notes of actual surveys made by me or under my supervision, and that the same is true and correct to the best of my knowledge and belief.



Date Surveyed  
June 28, 1986  
Plotted and Certified  
on the Land  
Certificate No. **8894**

Bootstrap Com No. 1  
1650' FNL & 750' FEL  
Sec. 31, T26N, R2W  
Rio Arriba Cnty., N.M.  
*Newhead*  
Loc. Grnd. Elev. 7525

Bootstrap Com No. 1  
1650' FNL & 750' FEL  
Sec. 31, T26N, R2W  
Rio Arriba Cnty., N.M.  
*Newhead*  
Loc. Grnd. Elev. 7525