

UNITED STATES
DEPARTMENT OF THE INTERIOR
BUREAU OF LAND MANAGEMENT

APPLICATION FOR PERMIT TO DRILL, DEEPEN, OR PLUG BACK

1a. TYPE OF WORK

DRILL ☒

DEEPEN ☐

PLUG BACK ☐

b. TYPE OF WELL

OIL
WELL ☒

GAS
WELL ☐

OTHER

SINGLE
ZONE ☐

MULTIPLE
ZONE ☐

2. NAME OF OPERATOR

JEROME P. McHUGH

3. ADDRESS OF OPERATOR

P O Box 809, Farmington, NM 87499

4. LOCATION OF WELL (Report location clearly and in accordance with any State law requirements)

At surface

990' FSL - 1650' FWL

At proposed prod. zone

RECEIVED

SEP 25 1986

14. DISTANCE IN MILES AND DIRECTION FROM NEAREST TOWN OR POST OFFICE*

12 miles north of Lindrith, NM

BUREAU OF LAND MANAGEMENT
FARMINGTON RESOURCE AREA

15. DISTANCE FROM PROPOSED*

LOCATION TO NEAREST

PROPERTY OR LEASE LINE, FT.

(Also to nearest drlg. unit line, if any)

330'

16. NO. OF ACRES IN LEASE

160

17. NO. OF ACRES ASSIGNED
TO THIS WELL

16/320

18. DISTANCE FROM PROPOSED LOCATION*

TO NEAREST WELL, DRILLING, COMPLETED,
OR APPLIED FOR, ON THIS LEASE, FT.

3/4 mile

19. PROPOSED DEPTH

8500'

20. ROTARY OR CABLE TOOLS

Rotary

21. ELEVATIONS (Show whether DF, RT, GR, etc.)

7715' GL; 7727' KB

DRILLING OPERATIONS AUTHORIZED ARE
SUBJECT TO COMPLIANCE WITH ATTACHED
"GENERAL REQUIREMENTS"

22. APPROX. DATE WORK WILL START*

This action is subject to technical and
procedural review pursuant to 43 CFR 3165.3
and appeal pursuant to 43 CFR 3165.4.

23.

PROPOSED CASING AND CEMENTING PROGRAM

SIZE OF HOLE	SIZE OF CASING	WEIGHT PER FOOT	SETTING DEPTH	QUANTITY OF CEMENT
12-1/4"	9-5/8"	36	250'	150 cu.ft. to surface
7-7/8"	5-1/2"	15.5 & 17#	8500'	2407 cu.ft. in 3 stages, circ. to surface

Plan to drill with spud mud to set surface casing at 250'. Will then drill with water and gel-chem. mud to test the Gavilan Mancos & Basin Dakota formations at total depth of $\pm 8500'$. Will run DIL-GR-SP & FDC-GNL-GR-Caliper logs. If well appears productive, will set 5 1/2" casing at total depth, cementing in 3 stages. Will selectively perforate, frac, clean out after frac & complete well using 2-7/8" tubing.

Gas is not dedicated.

Approved w/ Surface Owner Agreement OCT 14 1986

IN ABOVE SPACE DESCRIBE PROPOSED PROGRAM: If proposal is to deepen or plug back, give data on present productive zone and proposed new productive zone. If proposal is to drill or deepen directionally, give pertinent data on subsurface locations and measured and true vertical depths. Give blowout preventer program, if any.

24.

SIGNED

James S. Hazen
James S. Hazen

TITLE

Field Supt.

(This space for Federal or State office use)

PERMIT NO.

APPROVAL DATE

OCT 20 1986

APPROVED BY

TITLE

/s/ J. Stan McKee

CONDITIONS OF APPROVAL, IF ANY:

FOR AREA MANAGER

Hold C-104 for
Cereage Consolidation

NMOCC

*See Instructions On Reverse Side

All distances must be from the outer boundaries of the Section.

Operator Jerome P. McHugh		Lease Wildfire		Well No. 1
Unit Letter N	Section 26	Township 26 North	Range 2 West	County Rio Arriba
Actual Footage Location of Well: 900 feet from the South line and 1650 feet from the West line				
Ground Level Elev. 7715	Producing Formation Mancos/Dakota	Pool Gavilan Mancos & Basin Dakota	Dedicated Acreage: 320.0 Acres	

1. Outline the acreage dedicated to the subject well by colored pencil or hatchure marks on the plat below.
2. If more than one lease is dedicated to the well, outline each and identify the ownership thereof (both as to working interest and royalty).
3. If more than one lease of different ownership is dedicated to the well, have the interests of all owners been consolidated by communitization, unitization, force-pooling, etc?

☐ Yes ☒ No If answer is "yes," type of consolidation Plan to communitize

If answer is "no," list the owners and tract descriptions which have actually been consolidated. (Use reverse side of this form if necessary.)

No allowable will be assigned to the well until all interests have been consolidated (by communitization, unitization, forced-pooling, or otherwise) or until a non-standard unit, eliminating such interests, has been approved by the Division.

<p>RECEIVED</p> <p>SEP 25 1986</p> <p>BUREAU OF LAND MANAGEMENT FARMINGTON RESOURCE AREA</p>	
<p>Fed. Lease NM 7993 Dugan Prod. Robert Andes Earl Lang</p>	<p>SEC. 26</p>
<p>1650</p> <p>Fed. Lease NM 28811 Michael Murphy 900</p>	<p>RECEIVED</p> <p>OCT 14 1986</p> <p>OIL CON. DIV. DIST. 3</p>

CERTIFICATION

I hereby certify that the information contained herein is true and complete to the best of my knowledge and belief.

Name
James S. Hazen

Position
Field Supt.

Company
Jerome P. McHugh

Date
9/24/86

I hereby certify that the location shown on the plat was obtained from field notes of actual surveys made by me or under my supervision and that the same is true and correct to the best of my knowledge and belief.

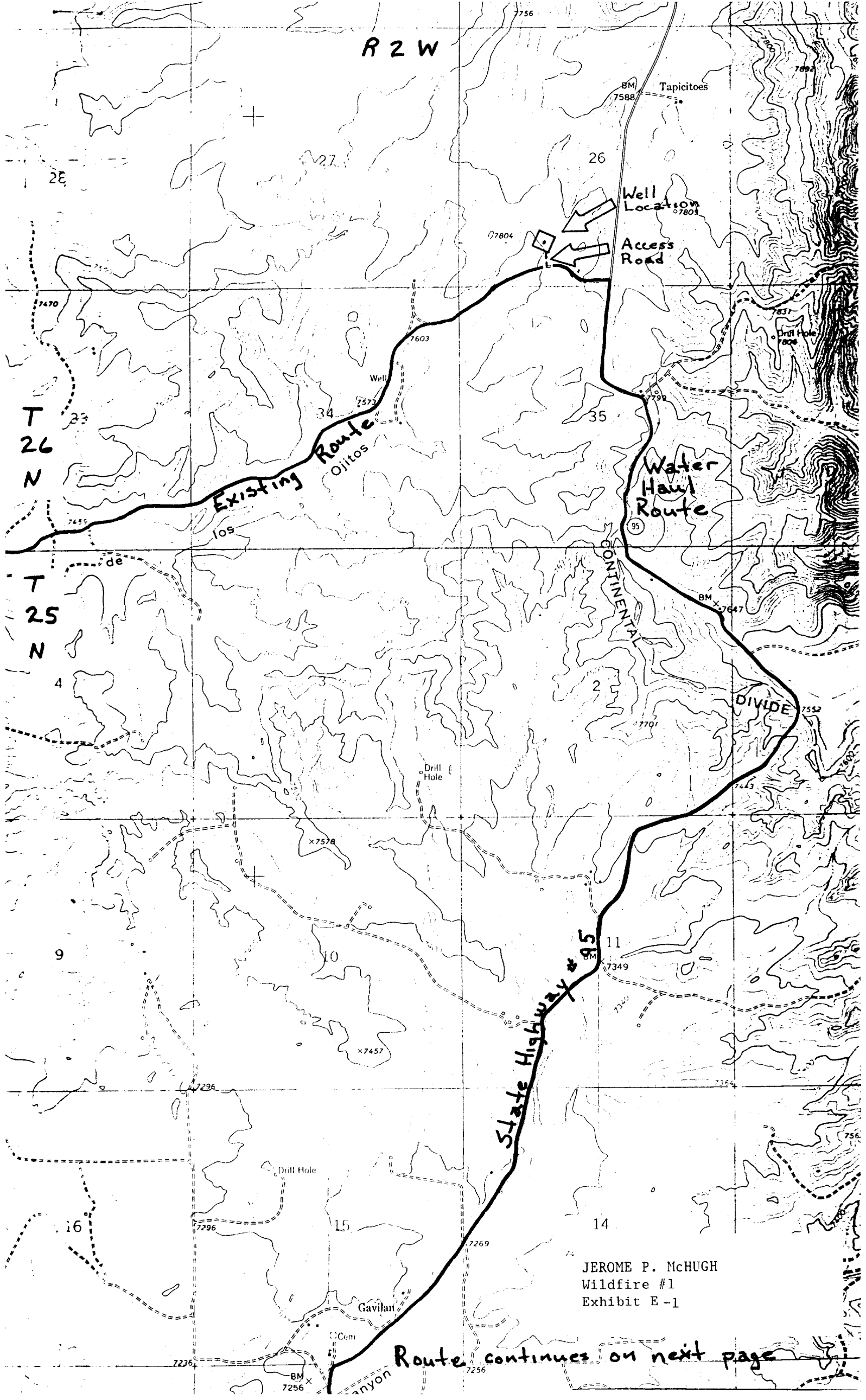
Date Surveyed
September 12, 1986

Registered Professional Engineer
and/or Land Surveyor

Edgar L. Risenhoover

Certificate No. 5979

Edgar L. Risenhoover, L.S.



JEROME P. McHUGH
Wildfire #1
Exhibit E-1

Route continues on next page