

UNITED STATES
DEPARTMENT OF THE INTERIOR
BUREAU OF LAND MANAGEMENT

APPLICATION FOR PERMIT TO DRILL, DEEPEN, OR PLUG BACK

1a. TYPE OF WORK
DRILL ☒ DEEPEN ☐ PLUG BACK ☐
b. TYPE OF WELL
OIL WELL ☒ GAS WELL ☒ OTHER ☐ SINGLE ZONE ☐ MULTIPLE ZONE ☒
2. NAME OF OPERATOR
Union Texas Petroleum
3. ADDRESS OF OPERATOR
375 U.S. Highway 64, Farmington New Mexico 87401
4. LOCATION OF WELL (Report location clearly and in accordance with any State regulations)
At surface 1800' FSL & 1850' FWL
At proposed prod. zone Same as above

14. DISTANCE IN MILES AND DIRECTION FROM NEAREST TOWN OR POST OFFICE
15.5 miles NW of Ojito, New Mexico
BUREAU OF LAND MANAGEMENT
FARMINGTON RESOURCE AREA
16. NO. OF ACRES IN LEASE
2560
17. NO. OF ACRES ASSIGNED TO THIS WELL
326-10
18. PROPOSED DEPTH
7895'
19. ROTARY OR CABLE TOOLS
Rotary
20. COUNTY OR PARISH
Rio Arriba
21. STATE
NM
22. APPROX. DATE WORK WILL START
November 1, 1986

21. ELEVATIONS (Show whether DE, BT, GR, etc.)
6726 Graded
23. PROPOSED CASING AND CEMENTING PROGRAM
"GENERAL REQUIREMENTS"
This action is subject to technical and procedural review pursuant to 43 CFR 3165.3 and appeal pursuant to 43 CFR 3165.4.
SIZE OF HOLE SIZE OF CASING WEIGHT PER FOOT SETTING DEPTH
12-1/4" 8-5/8" 24.0 300' 200'
7-7/8" 4-1/2" 10.5 7895'
stage tool @ 4900'

Union Texas Petroleum desires to drill a 12-1/4" hole to 300' and set 8-5/8", 24#, K-55, ST&C to 300', cementing same to surface w/210 sxs (248 cu.ft.) Class "B" containing 2% CaCl2. W.O.C. Nipple up. Test BOP, choke manifold and casing. Drill 7-7/8" hole out of surface casing to 7895'. Log well with DIL-GR: TD-surface casing. FDC-CNL: TD-surface casing. If commercial production is indicated, run 4-1/2", 10.5#, K-55 ST&C casing to TD. Cement 1st stage with 590 sxs (926 cu.ft.) 50/50 POZ w/4% gel, 6-1/4# gilsonite, 10# salt. (Stage tool @ 4900'.) Cement 2nd stage with 525 sxs (1507 cu.ft.) 65/35 POZ w/12% gel and 12-1/4# gilsonite. Perforate and frac pay in Dakota, Mesaverde and Gallup. Test well. Install production equipment. This well will be downhole commingled pursuant to Order R-7508.

NOTE: This location was previously inspected and archaeologically cleared 3/16/84.

IN ABOVE SPACE DESCRIBE PROPOSED PROGRAM: If proposal is to deepen or plug back, give data on present productive zone and proposed new productive zone. If proposal is to drill or deepen directionally, give pertinent data on subsurface locations and measured and true vertical depths. Give blowout preventer program, if any.

24. SIGNED Robert C. Frank TITLE Permit Coordinator DATE September 12, 1986
(This space for Federal or State office use)
PERMIT NO. _____ APPROVAL DATE _____
APPROVED BY _____ TITLE _____ DATE _____
CONDITIONS OF APPROVAL, IF ANY:

NEW MEXICO LAND CONSERVATION COMMISSION
WELL LOCATION AND ACREAGE DEDICATION PLAT

Form C-102
Supersedes C-120
Effective 1-1-83

All distances must be from the outer boundaries of the Section.

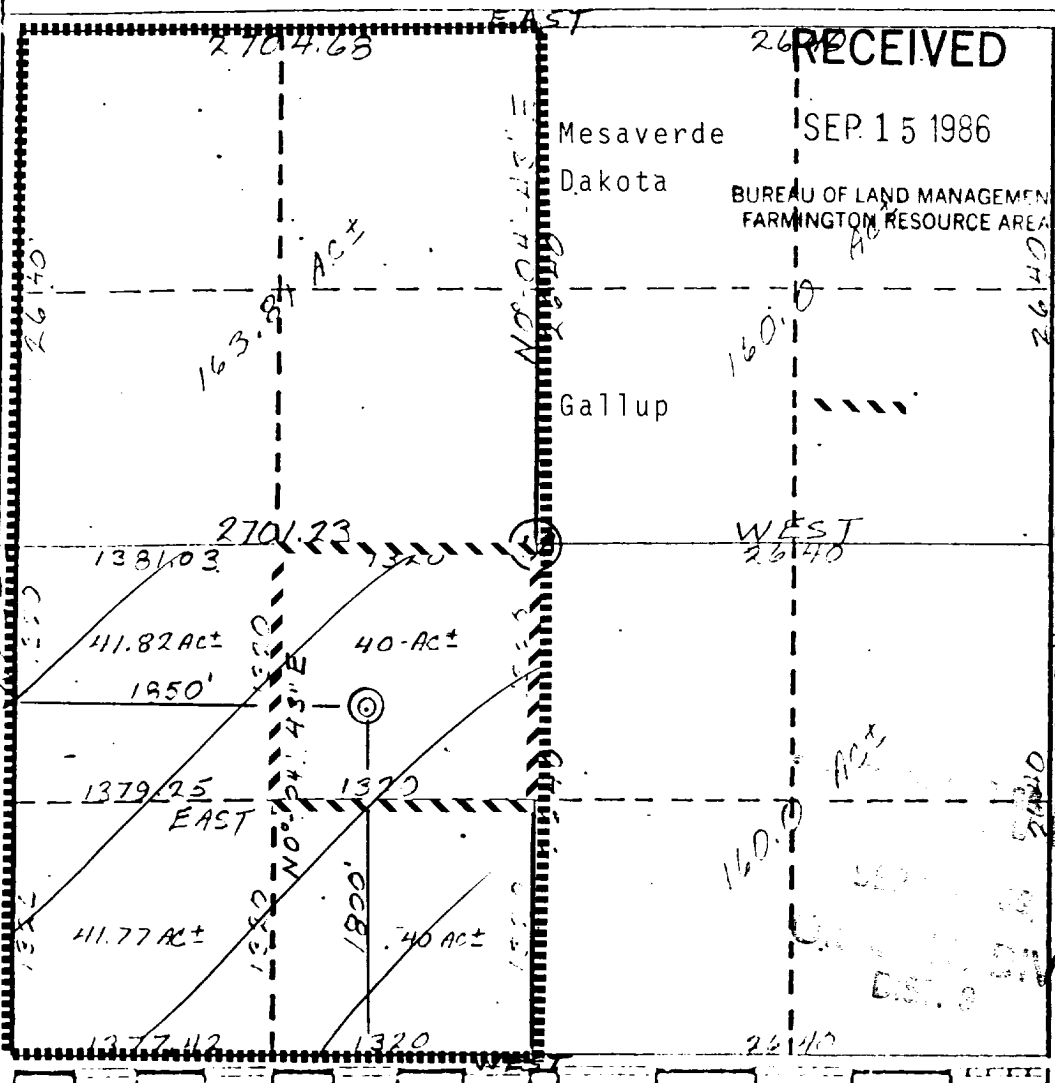
Operator UNION TEXAS PETROLEUM CORPORATION			Lease JICARILLA "H"		Well No. 11E
Unit Letter K	Section 18	Township 26 NORTH	Range 4 WEST	County RIO ARriba	
Actual Footage Location of Well:					
1800 feet from the SOUTH line and		1850 feet from the WEST line			
Ground Level Elev. 6726	Producing Formation Mesaverde/Gallup/Dakota	Pool Wild Horse Gal EXT Blanco/Undes./Basin	Dedicated Acreage: 327.44326 AC Gal. 4016269 Acres		

1. Outline the acreage dedicated to the subject well by colored pencil or hachure marks on the plat below.
2. If more than one lease is dedicated to the well, outline each and identify the ownership thereof (both as to working interest and royalty).
3. If more than one lease of different ownership is dedicated to the well, have the interests of all owners been consolidated by communitization, unitization, force-pooling, etc?

☐ Yes ☐ No If answer is "yes," type of consolidation _____

If answer is "no," list the owners and tract descriptions which have actually been consolidated. (Use reverse side of this form if necessary.) _____

No allowable will be assigned to the well until all interests have been consolidated (by communitization, unitization, forced-pooling, or otherwise) or until a non-standard unit, eliminating such interests, has been approved by the Commission.



CERTIFICATION

I hereby certify that the information contained herein is true and complete to the best of my knowledge and belief.

Robert C. Frank

Name
Robert C. Frank
Position
Permit Coordinator
Company
Union Texas Petroleum
Date
September 11, 1986

I hereby certify that the well location shown on this plat was plotted from field notes of actual surveys made by me or under my supervision and that the same is true and correct to the best of my knowledge and belief.

September 11, 1986

By Surveyed
Cecil B. Tullis
Registered Professional Engineer
and/or Land Surveyor

Cecil B. Tullis

Certificate No.

1170

LAPIS POINT QUADRANGLE
NEW MEXICO-RIO ARriba CO
7.5 MINUTE SERIES (TOPOGRAPHIC)

