



STATE OF NEW MEXICO  
**ENERGY AND MINERALS DEPARTMENT**  
OIL CONSERVATION DIVISION

ds  
EB  
NE APD

TONY ANAYA  
GOVERNOR

October 8, 1986

POST OFFICE BOX 2088  
STATE LAND OFFICE BUILDING  
SANTA FE, NEW MEXICO 87501  
(505) 827-5800

Merrion Oil & Gas Corporation  
P. O. Box 840  
Farmington, New Mexico 87499

Attention: Steven S. Dunn

Administrative Order NSL-2298

Gentlemen:

Reference is made to your application for a non-standard location for your Cursor No. 1 well to be located 1180 feet from the South line and 1125 feet from the West line of Section 20, Township 26 North, Range 2 West, NMMPM, ~~Undesignated~~ N.E. Ojito Gallup-Dakota Pool, Rio Arriba County, New Mexico. The SW/4 of said Section 20 shall be dedicated to the well.

By authority granted me under the provisions of Rule 104 F(1), the above-described unorthodox location is hereby approved.

Sincerely,

R. L. STANETS, DIRECTOR

RLS/DC/dr

cc: Oil Conservation Division - Aztec  
Bureau of Land Management - Farmington

RECEIVED  
OCT 10 1986  
OIL CONSERVATION DIV.  
DIST. 3



STATE OF NEW MEXICO  
ENERGY AND MINERALS DEPARTMENT  
OIL CONSERVATION DIVISION  
AZTEC DISTRICT OFFICE

1000 RIO BRAZOS ROAD  
AZTEC, NEW MEXICO 87410  
(505) 334-6178

OIL CONSERVATION DIVISION  
BOX 2088  
SANTA FE, NEW MEXICO 87501

DATE 10-6-86

RE: Proposed MC \_\_\_\_\_  
Proposed DHC \_\_\_\_\_  
Proposed NSL A \_\_\_\_\_  
Proposed SWD \_\_\_\_\_  
Proposed WFX \_\_\_\_\_  
Proposed PMX \_\_\_\_\_

Gentlemen:

I have examined the application dated 9-17-86  
for the Merrien Oil & Gas Corp. Curser #1 M-20-26N-2W  
Operator Lease and Well No. Unit, S-T-R

and my recommendations are as follows:

Approve  
\_\_\_\_\_  
\_\_\_\_\_  
\_\_\_\_\_  
\_\_\_\_\_  
\_\_\_\_\_

Yours truly,

E. Bush

MERRION OIL & GAS CORPORATION

P. O. Box 840  
FARMINGTON, NEW MEXICO 87499

September 16, 1986

State of New Mexico  
Energy and Minerals Department  
Oil Conservation Division  
P. O. Box 2088  
Santa Fe, New Mexico 87501

Re: Cursor No. 1  
1180' FSL and 1125' FWL  
Sec. 20, T26N, R2W  
Rio Arriba Co., New Mexico

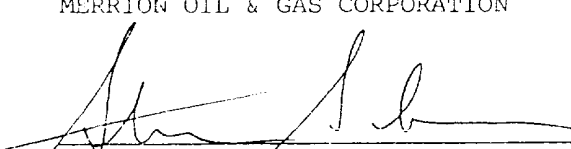
Dear Sir:

The above referred to location is for a well to be drilled to the Gallup Formation. Due to a topographic ravine to the West and a well site on the South, it is necessary to stake an unorthodox location. Certified Letters have been sent to the offsetting operators advising them of the proposed location. We hereby request administrative approval of this unorthodox location for drilling.

Thank you for your assistance in this matter.

Yours truly,

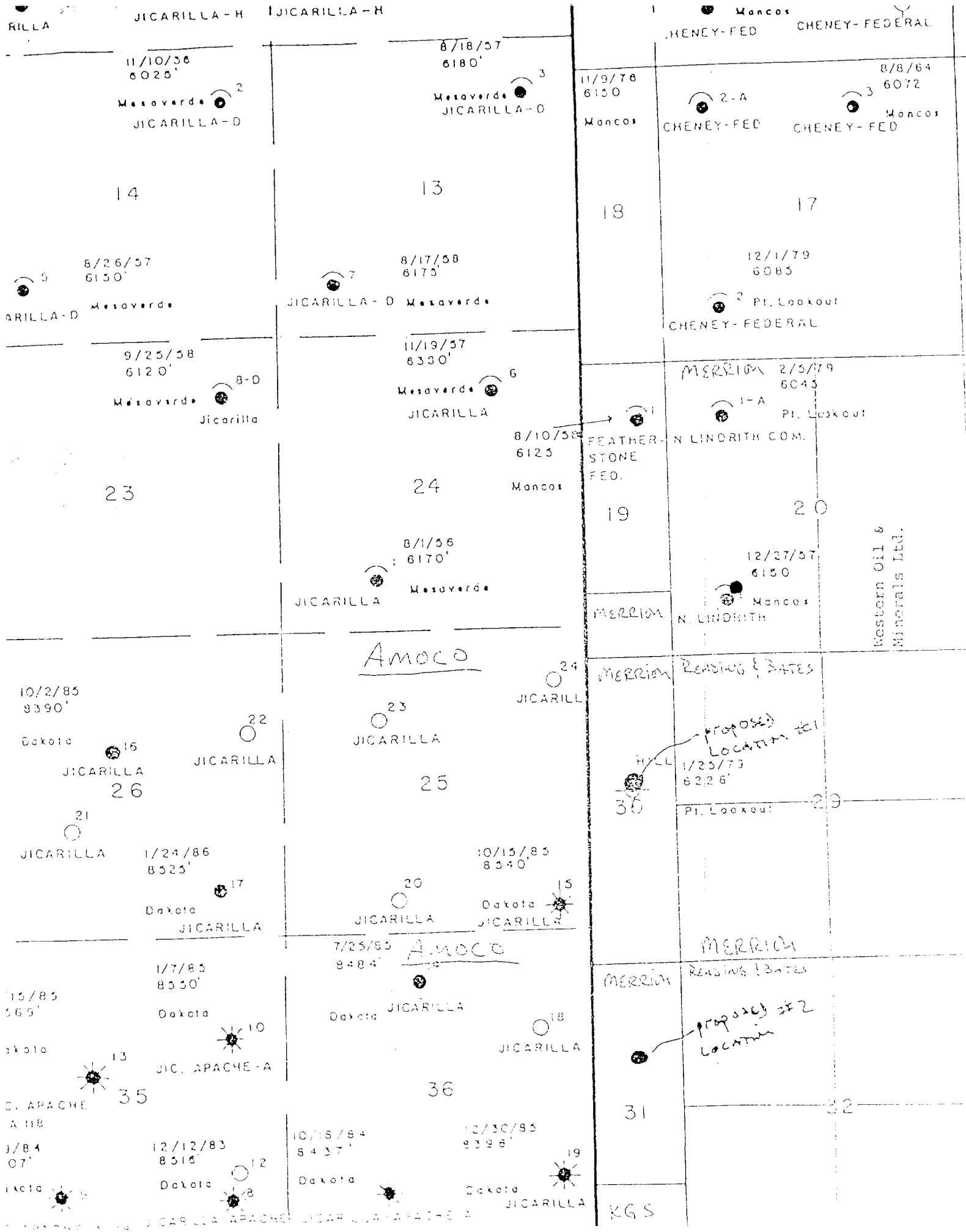
MERRION OIL & GAS CORPORATION

  
Steven S. Dunn, Operations Manager

SSD/am

Enc.

RECEIVED  
SEP 17 1986  
OIL CON. DIV.  
DIST. 3



N. MEXICO OIL CONSERVATION COMMISSION  
WELL LOCATION AND ACREAGE DEDICATION PLAT

Form C-102  
Supersedes C-128  
Effective 1-1-65

All distances must be from the outer boundaries of the Section.

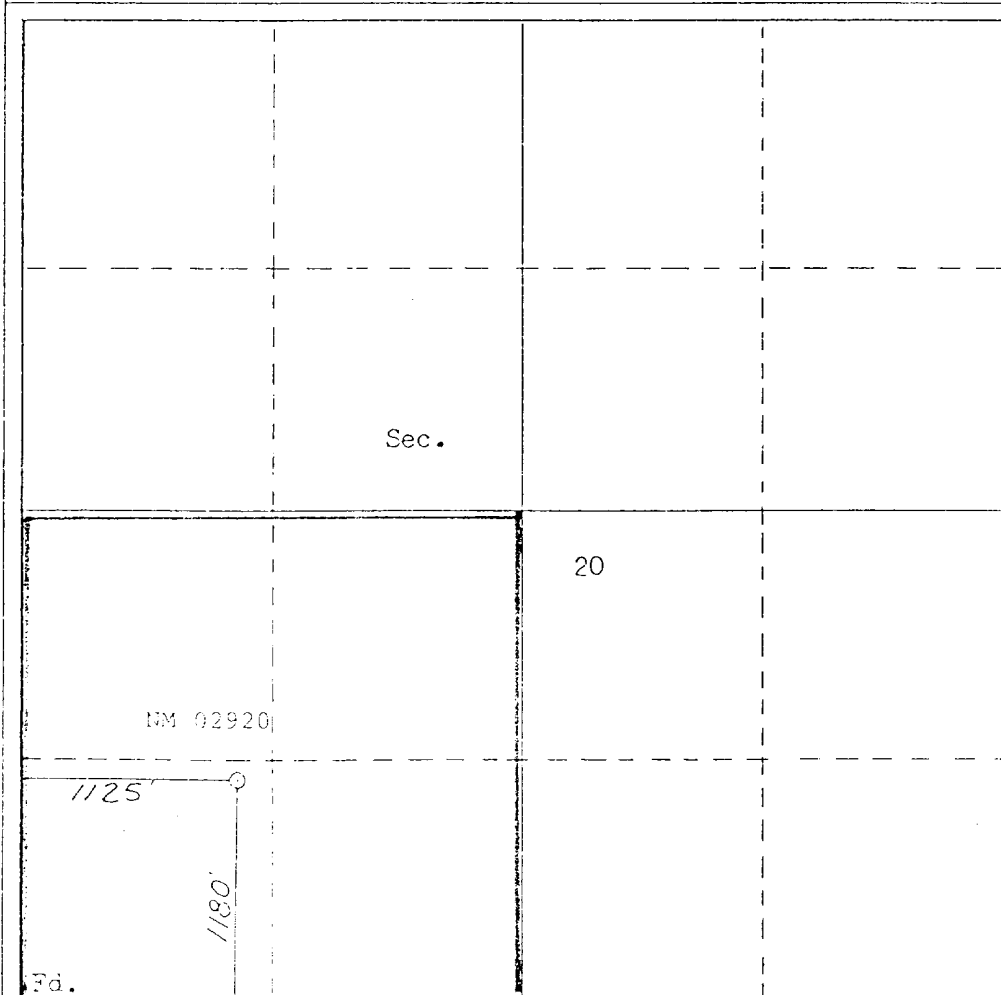
Operator <b>MERRION OIL &amp; GAS CORPORATION</b>			Lease <b>Cursor</b>		Well No. <b>1</b>
Unit Letter <b>M</b>	Section <b>20</b>	Township <b>26N</b>	Range <b>2W</b>	County <b>Rio Arriba</b>	
Actual Footage Location of Well: <b>1180</b> feet from the <b>South</b> line and <b>1125</b> feet from the <b>West</b> line					
Ground Level Elev. <b>7380</b>	Producing Formation <b>Gallup</b>		Pool <b>NE 1/4 to Gallup EXT</b> <b>Undesignated Gallup EXT</b>	Dedicated Acreage: <b>160</b> Acres	

1. Outline the acreage dedicated to the subject well by colored pencil or hachure marks on the plat below.
2. If more than one lease is dedicated to the well, outline each and identify the ownership thereof (both as to working interest and royalty).
3. If more than one lease of different ownership is dedicated to the well, have the interests of all owners been consolidated by communitization, unitization, force-pooling, etc?

☐ Yes ☐ No If answer is "yes," type of consolidation \_\_\_\_\_

If answer is "no," list the owners and tract descriptions which have actually been consolidated. (Use reverse side of this form if necessary.) \_\_\_\_\_

No allowable will be assigned to the well until all interests have been consolidated (by communitization, unitization, forced-pooling, or otherwise) or until a non-standard unit, eliminating such interests, has been approved by the Commission.



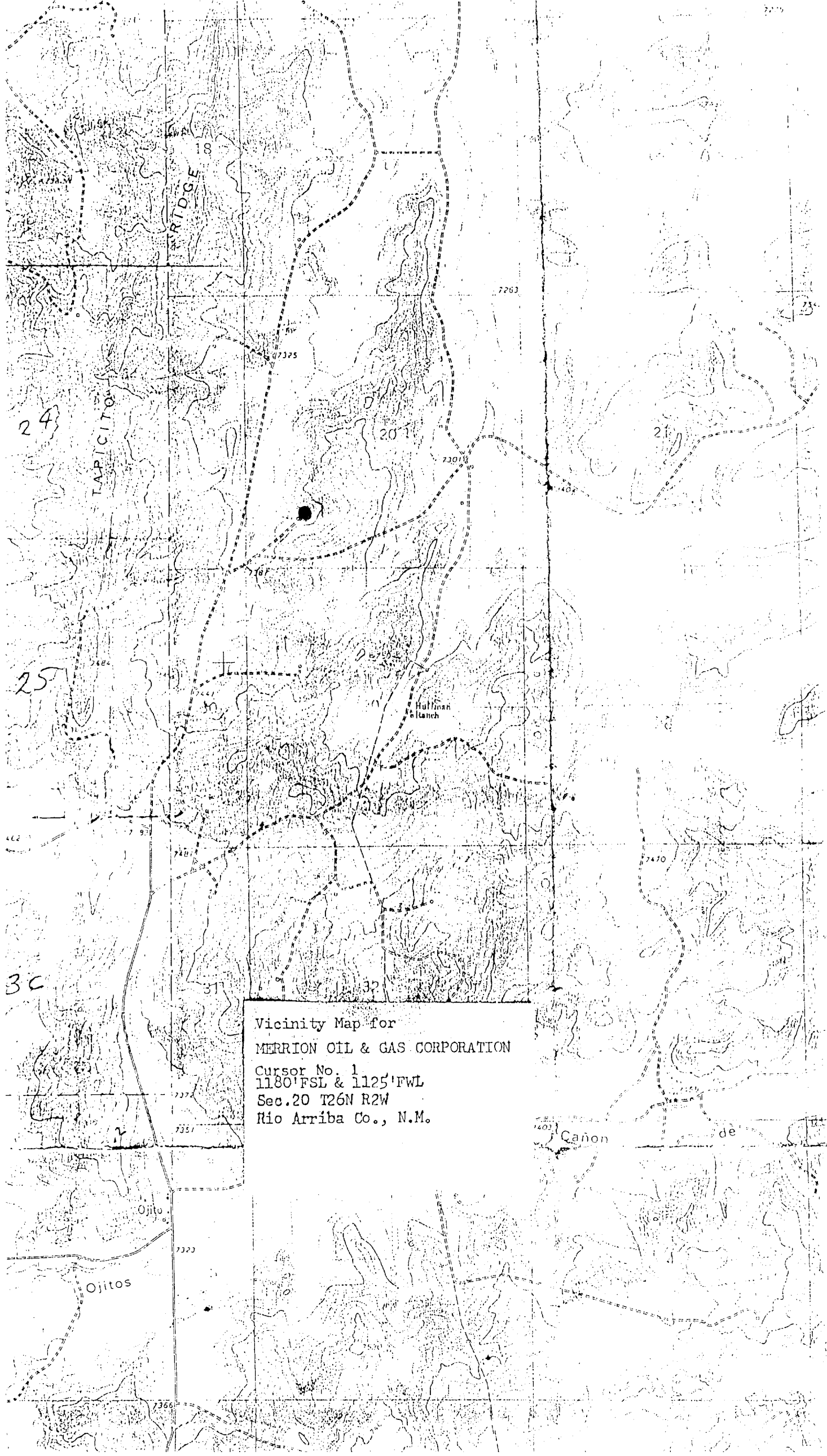
CERTIFICATION

I hereby certify that the information contained herein is true and complete to the best of my knowledge and belief.

Name Steve S. Dunn  
Position Operations Manager  
Company Merrion Oil & Gas Corporation  
Date 7/24/86

I hereby certify that the well location shown on this plat was plotted from field notes of actual surveys made by me or under my supervision, and that the same is true and correct to the best of my knowledge and belief.

Date Surveyed 6-26-86  
Surveyor William E. Manke II  
Registered Professional Engineer  
and of State of New Mexico  
8/66



Vicinity Map for  
MERRION OIL & GAS CORPORATION  
Cursor No. 1  
1180' FSL & 1125' FWL  
Sec. 20 T26N R2W  
Rio Arriba Co., N.M.