

UNITED STATES  
DEPARTMENT OF THE INTERIOR  
BUREAU OF LAND MANAGEMENT

SUBMIT IN TRIPLICATE\*  
(Other instructions on  
reverse side)

Form approved.  
Budget Bureau No. 1004-0136  
Expires August 31, 1985

30-039-24084

APPLICATION FOR PERMIT TO DRILL, DEEPEN, OR PLUG BACK

1a. TYPE OF WORK  
DRILL ☒ DEEPEN ☐ PLUG BACK ☐

b. TYPE OF WELL  
OIL WELL ☐ GAS WELL ☒ OTHER ☐ SINGLE ZONE ☐ MULTIPLE ZONE ☒

2. NAME OF OPERATOR  
Union Texas Petroleum

3. ADDRESS OF OPERATOR  
375 U.S. Highway 64, Farmington New Mexico 87401

4. LOCATION OF WELL (Report location clearly and in accordance with any State requirements)  
At surface 1695' FSL & 990' FEL  
At proposed prod. zone Same as above

14. DISTANCE IN MILES AND DIRECTION FROM NEAREST TOWN OR POST OFFICE\*  
14.5 miles NW of Ojito, New Mexico

15. DISTANCE FROM PROPOSED\*  
LOCATION TO NEAREST  
PROPERTY OR LEASE LINE, FT.  
(Also to nearest drlg. unit line, if any)  
990' from lease  
990' from DU

19. DISTANCE FROM PROPOSED LOCATION\*  
TO NEAREST WELL, DRILLING, COMPLETED,  
OR APPLIED FOR, ON THIS LEASE, FT.  
2764'

21. ELEVATIONS (Show whether DF, RT, GR, etc.)  
6702' Graded

23. PROPOSED CASING AND CEMENTING PROGRAM

SIZE OF HOLE	SIZE OF CASING	WEIGHT PER FOOT	SETTING DEPTH	QUANTITY OF CEMENT
12-1/4"	8-5/8"	24.0# 24#	300'	210 sxs. (248 cu.ft.)
7-7/8"	4-1/2"	10.5#	7875'	1115 sxs. (2433 cu.ft.)
stage tool @ 4900'				

See attached Sunday

Union Texas Petroleum desires to drill a 12-1/4" hole to 300'+ and set 8-5/8", 24#, K-55, ST&C to 300'+, cementing same to surface with 210 sxs (248 cu.ft.) C1 "B" containing 2% CaCl2. W.O.C. Nipple up. Test BOP, choke manifold and casing. Drill 7-7/8" hole out of surface casing to 7875'. Log well with DIL-GR: TD-surface casing. FDC-CNL: TD-surface casing. If commercial production is indicated, run 4-1/2", 10.5#, K-55 ST&C casing to TD. Cement 1st stage with 590 sxs (926 cu.ft.) 50/50 POZ w/4% gel, 6-1/4# gilsonite, 10# salt. (Stage tool @ 4900') Cement 2nd stage with 525 sxs (1507 cu.ft.) 65/35 POZ w/12% gel and 12-1/4# gilsonite. Perforate and frac pay in Dakota, Mesaverde and Gallup. Test well. Install production equipment. This well will be downhole commingled pursuant to Order R-7508.

IN ABOVE SPACE DESCRIBE PROPOSED PROGRAM: If proposal is to deepen or plug back, give data on present productive zone and proposed new productive zone. If proposal is to drill or deepen directionally, give pertinent data on subsurface locations and measured and true vertical depths. Give blowout preventer program, if any.

24. SIGNED Robert C. Frank TITLE Permit Coordinator DATE September 25, 1986

(This space for Federal or State use) RECEIVED APPROVED AS AMENDED

PERMIT NO.                      APPROVAL DATE                     

APPROVED BY                      TITLE                      DATE OCT 21 1986

CONDITIONS OF APPROVAL, IF ANY: OIL CON. DIV. DIST. 3 NMCCD /s/ J. Stan McKee

\*See Instructions On Reverse Side

FOR AREA MANAGER

1001 makes it a crime for any person knowingly and willfully to make to any department or agency of the

# NEW MEXICO OIL CONSERVATION COMMISSION

## WELL LOCATION AND ACREAGE DEDICATION PLAT

Form C-101  
Supersedes C-10  
Effective 1-1-83

All distances must be from the outer boundaries of the Section.

Operator <b>UNION TEXAS PETROLEUM CORPORATION</b>			Lease <b>JICARILLA "H"</b>		Well No. <b>9612M</b>
Unit Letter <b>I</b>	Section <b>17</b>	Township <b>26 NORTH</b>	Range <b>4 WEST</b>	County <b>- RIO ARriba</b>	

Actual Footage Location of Well:

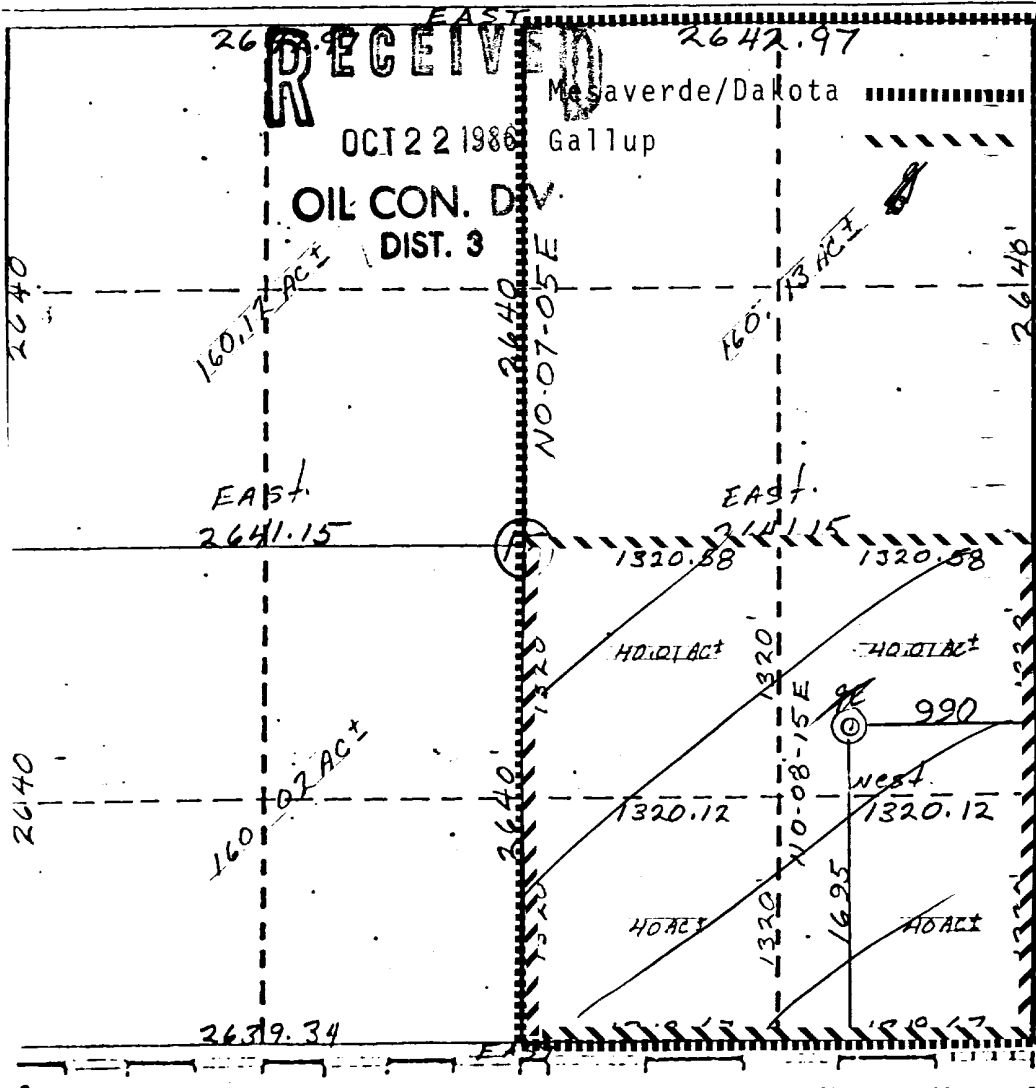
<b>1695</b>	feet from the <b>SOUTH</b>	line and <b>990</b>	feet from the <b>EAST</b>	line <b>1607</b>
Ground Level Elev. <b>6702</b>	Producing Formation <b>Mesaverde</b> <b>Gallup Dakota</b>		Pool <b>Blanco</b> <b>Wild Horse Basin</b>	Dedicated Acreage <b>Gal</b> <b>320 MV/DK / 60 Acres</b>

1. Outline the acreage dedicated to the subject well by colored pencil or hachure marks on the plat below.
2. If more than one lease is dedicated to the well, outline each and identify the ownership thereof (both as to working interest and royalty).
3. If more than one lease of different ownership is dedicated **OCT 07 1986** the interests of all owners been consolidated by communitization, unitization, force-pooling, etc?

☐ Yes ☐ No If answer is "yes," type of consolidation **BUREAU OF LAND MANAGEMENT**  
**WILSON RESOURCE AREA**

If answer is "no," list the owners and tract descriptions which have actually been consolidated. (Use reverse side of this form if necessary.)

No allowable will be assigned to the well until all interests have been consolidated (by communitization, unitization, forced-pooling, or otherwise) or until a non-standard unit, eliminating such interests, has been approved by the Commission.



### CERTIFICATION

I hereby certify that the information contained herein is true and complete to the best of my knowledge and belief.

*Robert C. Frank*

Name  
**Robert C. Frank**

Position  
**Permit Coordinator**  
Company  
**Union Texas Petroleum**

Date  
**October 7, 1986**

I hereby certify that the well location shown on this plat was determined from field notes of **NEW MEXICO** type by me or under my supervision and that the same is true and correct to the best of my knowledge and belief.

*Cecil B. Tullis*  
**SEPTEMBER 1986**

Date Surveyed  
**Cecil B. Tullis**  
Registered Professional Engineer  
and/or Land Surveyor

**9672**  
Certificate No.



UNITED STATES  
DEPARTMENT OF THE INTERIOR  
BUREAU OF LAND MANAGEMENT

SUBMIT IN TRIPLICATE\*  
(Other instructions on re-  
verse side)

Form approved.  
Budget Bureau No. 1004-0135  
Expires August 31, 1985

5. LEASE DESIGNATION AND SERIAL NO.

Jicarilla Contract 103

6. IF INDIAN, ALLEGED OR TRIBAL NAME

Jicarilla Apache

7. UNIT AGREEMENT NAME

N/A

8. FARM OR LEASE NAME

JICARILLA H

9. WELL NO.

9E

10. FIELD AND POOL, OR WILDCAT

Blanco Mesaverde

Basin Dakota/Tap Gallup

11. SEC., T., R., M., OR BLK. AND  
SURVEY OR AREA

Section 17-T26N-R4W

12. COUNTY OR PARISH

Rio Arriba

13. STATE

NM

1.

OIL  
WELL ☐

GAS  
WELL ☒

2. NAME OF OPERATOR

Union Texas Petroleum

3. ADDRESS OF OPERATOR

375 U.S. Highway 64, Farmington, New Mexico 87401

4. LOCATION OF WELL (Report location clearly and in accordance with any State requirements.  
See also space 17 below.)  
At surface

1695' FSL & 990' FEL

OCT 17 1986

14. PERMIT NO.

15. ELEVATIONS (Show whether DF, RT, or etc.)

6702' GL 6714' KB

BUREAU OF LAND MANAGEMENT  
FARMINGTON RESOURCE AREA

12. COUNTY OR PARISH

Rio Arriba

13. STATE

NM

16.

Check Appropriate Box To Indicate Nature of Notice, Report, or Other Data

NOTICE OF INTENTION TO:

TEST WATER SHUT-OFF ☐

FRACTURE TREAT ☐

SHOOT OR ACIDIZE ☐

REPAIR WELL ☐

(Other)

PULL OR ALTER CASING ☒

MULTIPLE COMPLETE ☐

ABANDON\* ☐

CHANGE PLANS ☒

SUBSEQUENT REPORT OF:

WATER SHUT-OFF ☐

FRACTURE TREATMENT ☐

SHOOTING OR ACIDIZING ☐

(Other)

REPAIRING WELL ☐

ALTERING CASING ☐

ABANDONMENT\* ☐

(NOTE: Report results of multiple completions on well  
Completion or Recompletion Report and Log form.)

17. DESCRIBE PROPOSED OR COMPLETED OPERATIONS (Clearly state all pertinent details, and give pertinent data, including estimated date of starting any proposed work. If well is directionally drilled, give subsurface locations and measured and true vertical depths for all markers and points pertinent to this work.)

Union Texas Petroleum desires to alter the casing and drilling fluids as follows:

Depth	Size	Wt., Grd., Thd.	Cement	Drill Fluid
0-300	9-5/8"	40.00 K-55 ST&C	175 sxs C1 "B" w/2% CaCl2	Spud mud
0-3700	7"	29.00 K-55 ST&C	205 sxs 65/35 POZ w/12% gel & 12-1/4# gilsonite/sk tailed by 100 sxs C1 "B" w/2% CaCl2	Low-solids non-dispersed
3500-7850 (liner)	4-1/2"	10.50 K-55 ST&C	525 sxs 50/50 POZ w/4% gel, 6-1/4# gilsonite/sk, 10# salt/sk.	Natural gas

18. I hereby certify that the foregoing is true and correct

SIGNED

*Robert C. Frank*

TITLE

Permit Coordinator

DATE

10/14/86

(This space for Federal or State office use)

APPROVED BY

TITLE

DATE

CONDITIONS OF APPROVAL, IF ANY:

\*See Instructions on Reverse Side

NMOCC

Title 18 U.S.C. Section 1001, makes it a crime for any person knowingly and willfully to make to any department or agency of the United States any false, fictitious or fraudulent statements or representations as to any matter within its jurisdiction.