

UNITED STATES
DEPARTMENT OF THE INTERIOR
BUREAU OF LAND MANAGEMENT

APPLICATION FOR PERMIT TO DRILL, DEEPEN, OR PLUG BACK

1a. TYPE OF WORK

DRILL ☒

DEEPEN ☐

PLUG BACK ☐

b. TYPE OF WELL

OIL
WELL ☒

GAS
WELL ☐

OTHER

SINGLE
ZONE ☒

MULTIPLE
ZONE ☒

2. NAME OF OPERATOR

Mobil Oil Corporation

3. ADDRESS OF OPERATOR

P. O. Drawer G, Cortez, CO 81321

4. LOCATION OF WELL (Report location clearly and in accordance with any State requirements.)

At surface

At proposed prod. zone

900' FSL 900' FWL SW SW

MAY 28 1987

14. DISTANCE IN MILES AND DIRECTION FROM NEAREST TOWN OR POST OFFICE*

3 1/2 miles NW of Ojito, New Mexico

BUREAU OF LAND MANAGEMENT
FARMINGTON RESOURCE AREA

15. DISTANCE FROM PROPOSED*

LOCATION TO NEAREST
PROPERTY OR LEASE LINE, FT.
(Also to nearest drilg. unit line, if any)

900'

16. NO. OF ACRES IN LEASE

2560

17. NO. OF ACRES ASSIGNED
TO THIS WELL

160

18. DISTANCE FROM PROPOSED LOCATION*
TO NEAREST WELL, DRILLING, COMPLETED,
OR APPLIED FOR, ON THIS LEASE, FT.

4650'

19. PROPOSED DEPTH

8600

20. ROTARY OR CABLE TOOLS

Rotary

21. ELEVATIONS (Show whether DF, RT, GR. This action is subject to technical and

Ungraded 7309 procedural review pursuant to 43 CFR 3105.3

22. APPROX. DATE WORK WILL START*

As soon as approved

23. PROPOSED CASING AND CEMENTING PROGRAM

DRILLING OPERATIONS AUTHORIZED ARE

SIZE OF HOLE	SIZE OF CASING	WEIGHT PER FOOT	SETTING DEPTH	SUBJECT TO COMPLIANCE WITH ATTACHED
20"	16"	Line Pipe	40	"GENERAL REQUIREMENTS"
12 1/4"	8 5/8"	32	400	Cemented to surface
7 7/8"	5 1/2"	15.5	8600	325 sx cement to surface
				1600 sx TD to 3600
				820 sx 3600 to surface

RECEIVED
JUL 02 1987
OIL CON. DIV.
DIST. 3

IN ABOVE SPACE DESCRIBE PROPOSED PROGRAM: If proposal is to deepen or plug back, give data on present productive zone and proposed new productive zone. If proposal is to drill or deepen directionally, give pertinent data on subsurface locations and measured and true vertical depths. Give blowout preventer program, if any.

24.

SIGNED

J. L. Douglass

TITLE

Regulatory Compliance Mgr. DATE 5/20/87

(This space for Federal or State office use)

PERMIT NO.

APPROVAL DATE

APPROVED BY

TITLE

CONDITIONS OF APPROVAL, IF ANY:

RNCCC

JUN 30 1987
/s/ J. Stan McKee
AREA MANAGER

*See Instructions On Reverse Side

**NEW MEXICO OIL CONSERVATION COMMISSION
WELL LOCATION AND ACREAGE DEDICATION PLAT**

Form C-192
Supersedes C-128
Effective 1-4-83

All distances must be from the outer boundaries of the Section.

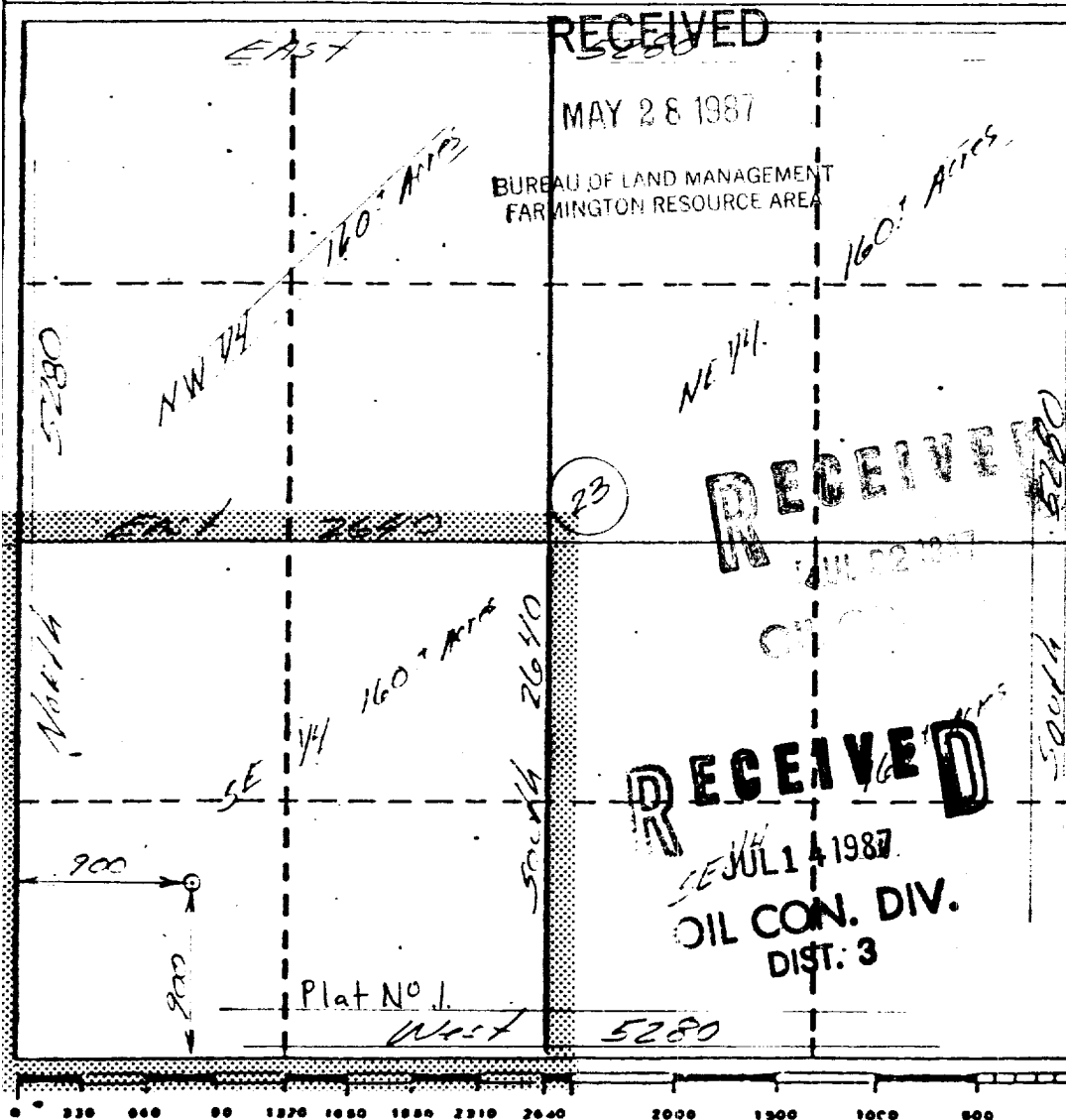
Operator MOBIL OIL CORPORATION			Lease JICARILLA D		Well No. 16
Section 23	Township 26 NORTH	Range 3 WEST	County RIO ARriba		
Actual Footage Location of Wells <div style="display: flex; justify-content: space-between;"> 900 feet from the SOUTH line and 900 feet from the WEST line </div>					
Ground Level Elev. 7309	Producing Formation Gallup-Dakota	Pool Northeast Ojito Gallup-Dakota	Dedicated Acreage 160 Acres		

1. Outline the acreage dedicated to the subject well by colored pencil or hatchure marks on the plat below.
2. If more than one lease is dedicated to the well, outline each and identify the ownership thereof (both as to working interest and royalty).
3. If more than one lease of different ownership is dedicated to the well, have the interests of all owners been consolidated by communitization, unitization, force-pooling, etc?

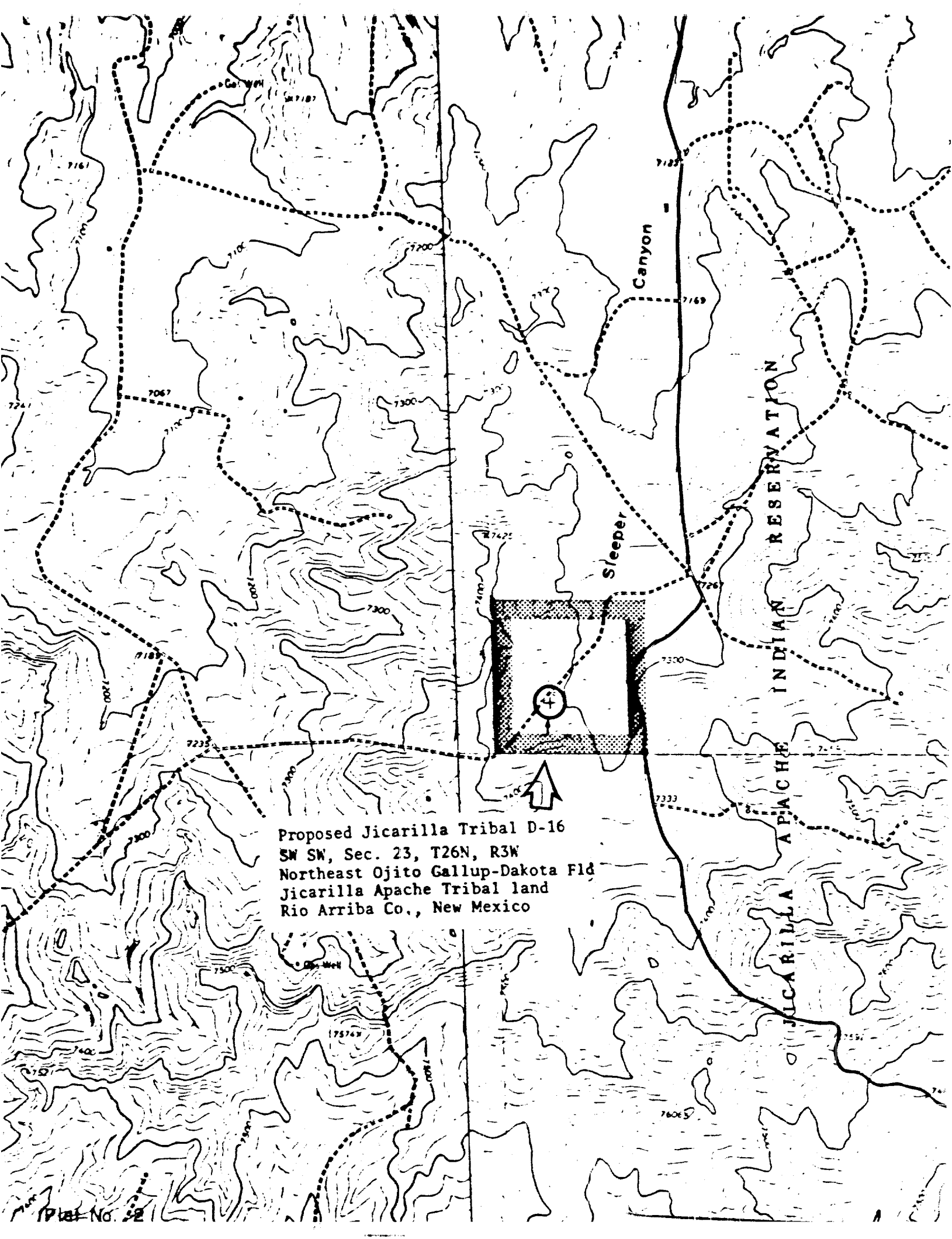
☐ Yes ☐ No If answer is "yes," type of consolidation _____

If answer is "no," list the owners and tract descriptions which have actually been consolidated. (Use reverse side of this form if necessary.) _____

No allowable will be assigned to the well until all interests have been consolidated (by communitization, unitization, forced-pooling, or otherwise) or until a non-standard unit, eliminating such interests, has been approved by the Commission.



CERTIFICATION	
I hereby certify that the information contained herein is true and complete to the best of my knowledge and belief.	
<i>Charles J. Benally</i>	
Name	C. J. Benally
Position	Sr. Environmental Engineer
Company	Mobil Oil Corp.
Date	5-20-87
I hereby certify that the well location shown on this plat was plotted from field notes of actual surveys made by me or under my supervision and that the same is true and correct to the best of my knowledge and belief.	
<i>George R. Tompkins</i>	
Date Surveyed	APRIL 21, 1987
Registered Professional Engineer and/or Land Surveyor	
GEORGE R. TOMPKINS	
Certificate No.	7259



Proposed Jicarilla Tribal D-16
SW SW, Sec. 23, T26N, R3W
Northeast Ojito Gallup-Dakota Fld
Jicarilla Apache Tribal land
Rio Arriba Co., New Mexico