

UNITED STATES
DEPARTMENT OF THE INTERIOR
BUREAU OF LAND MANAGEMENT

APPLICATION FOR PERMIT TO DRILL, DEEPEN, OR PLUG BACK

1a. TYPE OF WORK DRILL <input checked="" type="checkbox"/> DEEPEN <input type="checkbox"/> PLUG BACK <input type="checkbox"/>			5. LEASE DESIGNATION AND SERIAL NO. SF 079266
b. TYPE OF WELL OIL WELL <input type="checkbox"/> GAS WELL <input checked="" type="checkbox"/> OTHER <input type="checkbox"/>			6. IF INDIAN, ALLOTTEE OR TRIBE NAME
2. NAME OF OPERATOR Meridian Oil Inc.			7. UNIT AGREEMENT NAME
3. ADDRESS OF OPERATOR PO Box 4289, Farmington, NM 87499			8. FARM OR LEASE NAME Vaughn
4. LOCATION OF WELL (Report location clearly and in accordance with any State requirements.) At surface 2300'N, 1500'E At proposed prod. zone			9. WELL NO. 33A
14. DISTANCE IN MILES AND DIRECTION FROM NEAREST TOWN OR POST OFFICE 16 miles North of Counselors, NM			10. FIELD AND POOL, OR WILDCAT Blanco Mesa Verde
13. DISTANCE FROM PROPOSED LOCATION TO NEAREST PROPERTY OR LEASE LINE, FT. (Also to nearest drlg. unit line, if any)	1500'	16. NO. OF ACRES IN LEASE 2560	17. NO. OF ACRES ASSIGNED TO THIS WELL E 320.00
18. DISTANCE FROM PROPOSED LOCATION TO NEAREST WELL, DRILLING, COMPLETED, OR APPLIED FOR, ON THIS LEASE, FT.	300'	19. PROPOSED DEPTH 5680'	20. ROTARY OR CABLE TOOLS Rotary
21. ELEVATIONS (Show whether DT, RT, GR, etc.) 6698' GL			22. APPROX. DATE WORK WILL START

23. This action is subject to technical and procedural review pursuant to 43 CFR 3100.3 and appeal pursuant to 43 CFR 3160.4. DRILLING OPERATIONS AUTHORIZED ARE SUBJECT TO COMPLIANCE WITH ATTACHED "GENERAL REQUIREMENTS"

SIZE OF HOLE	SIZE OF CASING	WEIGHT PER FOOT	SETTING DEPTH	
12 1/4"	8 5/8"	24.0#	200'	166 cu.ft.circulated
7 7/8"	4 1/2"	10.5#	5680'	740 cu.ft.circulated

1st stage - 350 cu.ft. to cover Gallup
2nd stage - 390 cu.ft. to cover Mesa Verde

Selectively perforate and sand water fracture the Mesa Verde formation.
A 3000 psi WP and 6000 psi test double gate preventer equipped with blind and pipe rams will be used for blow out prevention on this well.
This gas is dedicated.

The E/2 of Section 26 is dedicated to this well

IN ABOVE SPACE DESCRIBE PROPOSED PROGRAM: If proposal is to deepen or plug back, give data on present productive zone and proposed new productive zone. If proposal is to drill or deepen directionally, give pertinent data on subsurface locations and measured and true vertical depths. Give blowout preventer program, if any.

24. [Signature] Drilling Clerk 09-30-87
SIGNED TITLE DATE

(This space for Federal or State office use)

PERMIT NO. APPROVAL DATE

APPROVED BY TITLE DATE
CONDITIONS OF APPROVAL, IF ANY:

N94
2266
OK

NMBOC

*See Instructions On Reverse Side

[Signature]

Title 18 U.S.C. Section 1001, makes it a crime for any person knowingly and willfully to make to any department or agency of the United States any false, fictitious or fraudulent statements or representations as to any matter within its jurisdiction.

All distances must be from the outer boundaries of the Section.

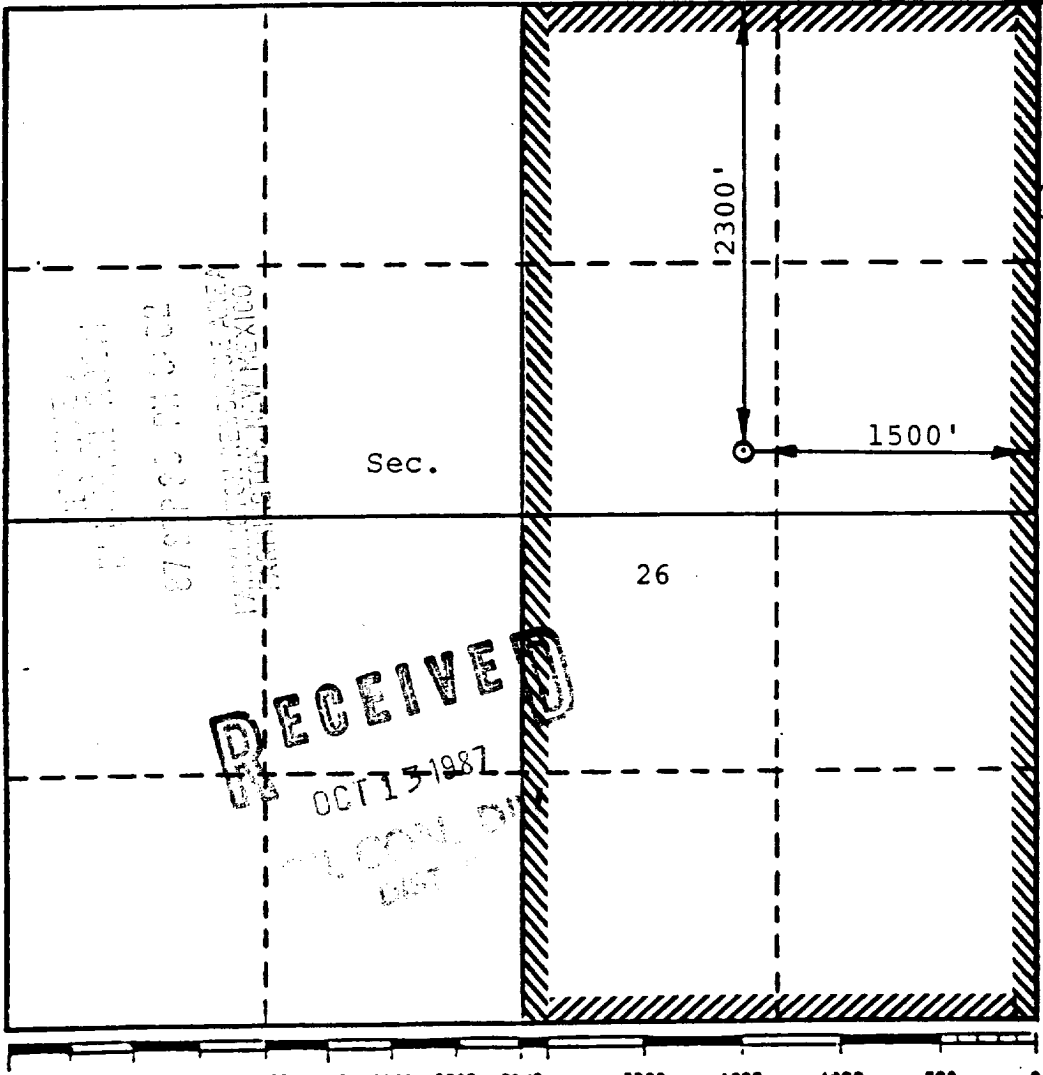
Operator MERIDIAN OIL INC.			Lease Vaughn (SF 079266)		Well No. 33A
Unit Letter G	Section 26	Township 26N	Range 6W	County Rio Arriba	
Actual Footage Location of Well: 2300 feet from the North line and 1500 feet from the East line					
Ground Level Elev. 6698	Producing Formation Mesaverde		Pool Blanco	Dedicated Acreage: 320 Acres	

1. Outline the acreage dedicated to the subject well by colored pencil or hatchure marks on the plat below.
2. If more than one lease is dedicated to the well, outline each and identify the ownership thereof (both as to working interest and royalty).
3. If more than one lease of different ownership is dedicated to the well, have the interests of all owners been consolidated by communitization, unitization, force-pooling, etc?

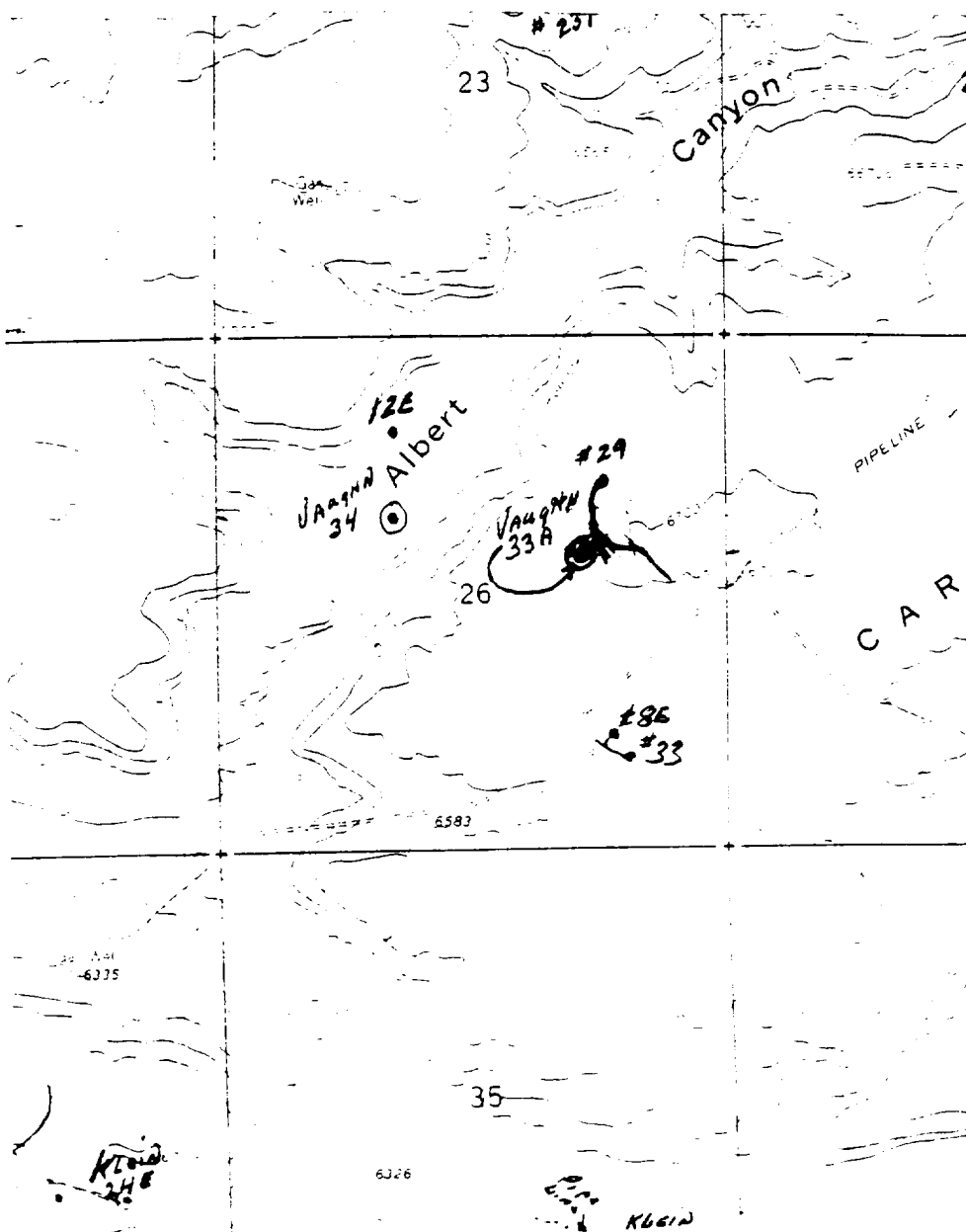
☐ Yes ☐ No If answer is "yes," type of consolidation _____

If answer is "no," list the owners and tract descriptions which have actually been consolidated. (Use reverse side of this form if necessary.) _____

No allowable will be assigned to the well until all interests have been consolidated (by communitization, unitization, forced-pooling, or otherwise) or until a non-standard unit, eliminating such interests, has been approved by the Division.

	CERTIFICATION I hereby certify that the information contained herein is true and complete to the best of my knowledge and belief. <i>David M. Kelsey</i> Name Drilling Clerk Position Meridian Oil Inc. Company 3-27-86 Date I hereby certify that the well location shown on this plat was plotted from field notes of actual survey made by me or under my supervision, and that the same is true and correct to the best of my knowledge and belief. March 18, 1986 Date Surveyed David M. Kelsey Registered Professional Engineer and/or Land Surveyor <i>David M. Kelsey</i> Certificate No. 5855
------------------------------------------------------------------------------------	----------------------------------------------------------------------------------------------------------------------------------------------------------------------------------------------------------------------------------------------------------------------------------------------------------------------------------------------------------------------------------------------------------------------------------------------------------------------------------------------------------------------------------------------------------------------------------------------------------------------------------------------------------------------------------

VAUGHN 33A



Map #2

LEGEND OF RIGHT-OF-WAYS

- EXISTING ROADS
- EXISTING PIPELINES
- EXISTING ROAD & PIPELINE
- PROPOSED ROADS
- PROPOSED PIPELINES
- PROPOSED ROAD & PIPELINE