

30-039-24201

Form 3160-3
(November 1983)
(formerly 9-331C)

SUBMIT IN TRIPLICATE*
(Other instructions on
reverse side)

Form approved.
Budget Bureau No. 1004-0136
Expires August 31, 1985

UNITED STATES
DEPARTMENT OF THE INTERIOR
BUREAU OF LAND MANAGEMENT

APPLICATION FOR PERMIT TO DRILL, DEEPEN, OR PLUG BACK

1a. TYPE OF WORK

DRILL ☒

DEEPEN ☐

PLUG BACK ☐

b. TYPE OF WELL

OIL
WELL ☐

GAS
WELL ☒

OTHER

SINGLE
ZONE ☐

MULTIPLE
ZONE ☒

2. NAME OF OPERATOR

Union Texas Petroleum

3. ADDRESS OF OPERATOR

375 U.S. Highway 64, Farmington New Mexico 88401

4. LOCATION OF WELL (Report location clearly and in accordance with any State requirements.)

At surface

890' FSL & 970' FEL

At proposed prod. zone

Same as above

14. DISTANCE IN MILES AND DIRECTION FROM NEAREST TOWN OR POST OFFICE*

22 miles northwest of Ojito, New Mexico

18. DISTANCE FROM PROPOSED* LOCATION TO NEAREST PROPERTY OR LEASE LINE, FT. (Also to nearest drig. unit line, if any.)

4310' from lease

890' from DU

19. DISTANCE FROM PROPOSED* LOCATION TO NEAREST WELL, DRILLING, COMPLETED, OR APPLIED FOR, ON THIS LEASE, FT.

3490'

16. NO. OF ACRES IN LEASE

2560

19. PROPOSED DEPTH

7725'

17. NO. OF ACRES ASSIGNED TO THIS WELL

160 acres

E/2 320 acres

20. ROTARY OR CABLE TOOLS

Rotary

21. ELEVATIONS (Show whether DF, RT, GR, etc.)

6687 G.L. (graded)

DRILLING OPERATIONS
SUBJECT TO COMPLIANCE WITH
"GENERAL REQUIREMENTS"

22. APPROX. DATE WORK WILL START*

April 1, 1988

23. PROPOSED CASING AND CEMENTING PROGRAM

This action is subject to the
procedural review pursuant to
and appeal pursuant to 43 CFR 3165.3

SIZE OF HOLE	SIZE OF CASING	WEIGHT PER FOOT	SETTING DEPTH	QUANTITY OF CEMENT
12-1/4"	9-5/8"	32.3#	350'	205 sxs (242 cu.ft.)
8-3/4"	7"	23.0#	3610'	345 sxs (813 cu.ft.)
6-1/4"	4-1/2" liner	10.5	3410'-7725'	510 sxs (800 cu.ft.)

Union Texas Petroleum wishes to advise we intend to drill 12-1/4" hole with mud to 350+ and set 9-5/8" 32.3#, H-40, ST&C csg. to 350' +, cementing to surface with 205 sxs (242 cu.ft.) C1 "B" with 2% CaCl2 and 1/4# flocele/sk. Wait on cement for 12 hrs.

Nipple up, test BOP. Drill 8-3/4" hole with mud out of surface to 3610'. Set 7", 23.0#, K-55, ST&C intermediate csg. to 3610', cementing to surface with 240 sxs (689 cu.ft.) 65-35 PC with 12% gel and 12-1/4# gilsonite/sk, tailed by 105 sxs (124 cu.ft) C1 "B" with 2% CaCl2.

Drill 6-1/4" hole with natural gas out of intermediate to a TD of 7725'. Log well, run 4-1/2", 10.5#, K-55, ST&C liner from 3410' to 7725'. Cement liner into intermediate csg with 510 sxs (800 cu.ft.) 50-50 POZ with 4% gel, 6-1/4# gilsonite/sk, and 10# salt/sk.

Following perforation and treatment of the Mesaverde, Gallup and Dakota formations, standard production equipment will be installed. The well will be tied into Gas Company of New Mexico. A cathodic protection groundbed will be drilled on location. This well will be equipped with a thermoelectric generator.

IN ABOVE SPACE DESCRIBE PROPOSED PROGRAM: If proposal is to deepen or plug back, give data on present productive zone and proposed new productive zone. If proposal is to drill or deepen directionally, give pertinent data on subsurface locations and measured and true vertical depths. Give blowout preventer program, if any.

24.

SIGNED

Robert C. Frank

TITLE Permit Coordinator

DATE February 19, 1987

(This space for Federal or State office use)

PERMIT NO.

APPROVAL DATE

APPROVED BY

CONDITIONS OF APPROVAL, IF ANY:

TITLE

DATE

Robert Mox

NMOCC

*See Instructions On Reverse Side

All distances must be from the outer boundaries of the Section.

Operator UNION TEXAS PETROLEUM			Lease JICARILLA "H"		Well No. 14
Unit Letter P	Section 18	Township 26N	Range 4W	County Rio Arriba	
Actual Footage Location of Well: 890 feet from the South line and 970 feet from the East line					
Ground Level Elev. 6687	Producing Formation Dakota Mesaverde/Gallup		Pool Blanco/ Wild Horse/Basin		Dedicated Acreage SE/4 160 E/2 320 Acres

1. Outline the acreage dedicated to the subject well by colored pencil or hatchure marks on the plat below.
2. If more than one lease is dedicated to the well, outline each and identify the ownership thereof (both as to working interest and royalty).
3. If more than one lease of different ownership is dedicated to the well, have the interests of all owners been consolidated by communitization, unitization, force-pooling, etc?

☐ Yes ☐ No If answer is "yes," type of consolidation _____

If answer is "no," list the owners and tract descriptions which have actually been consolidated. (Use reverse side of this form if necessary.) _____

No allowable will be assigned to the well until all interests have been consolidated (by communitization, unitization, forced-pooling, or otherwise) or until a non-standard unit, eliminating such interests, has been approved by the Division.

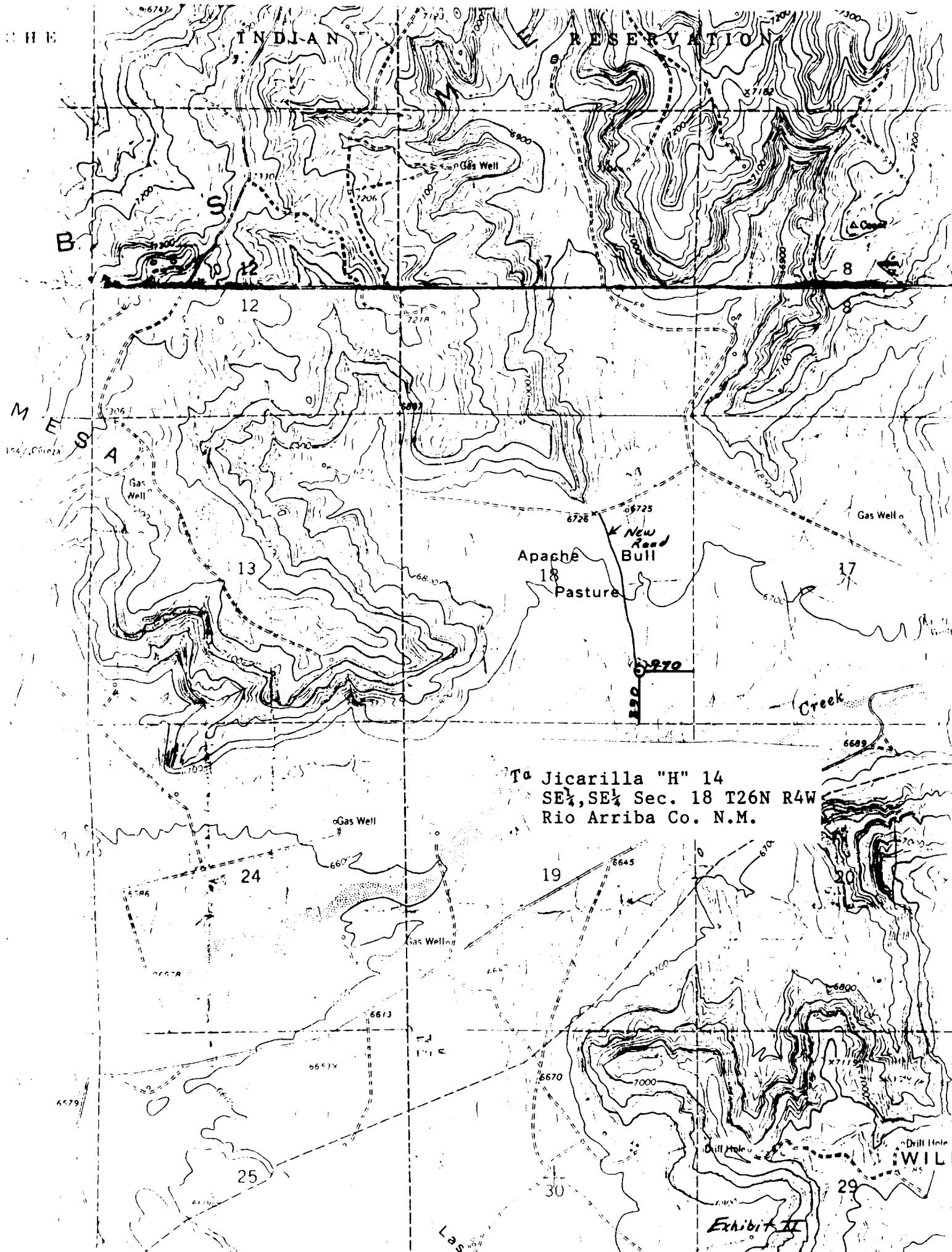
		<p align="center">CERTIFICATION</p> <p>I hereby certify that the information contained herein is true and complete to the best of my knowledge and belief.</p> <p align="center"><i>Robert C. Frank</i></p>	
		<p>Name Robert C. Frank</p> <p>Position Permit Coordinator</p> <p>Company Union Texas Petroleum</p> <p>Date February 19, 1988</p>	
<p>I hereby certify that the well location shown on this plat was plotted from field notes of actual surveys made by me or under my supervision, and that the same is true and correct to the best of my knowledge and belief.</p> <p align="center"><i>B. T. Tolles</i></p>		<p align="center"> </p>	

Exhibit I

CHE

INDIAN

RESERVATION



To Jicarilla "H" 14
SE 1/4, SE 1/4 Sec. 18 T26N R4W
Rio Arriba Co. N.M.

Exhibit II