

UNITED STATES
DEPARTMENT OF THE INTERIOR
BUREAU OF LAND MANAGEMENT

SUBMIT IN TRIPLICATE*
(Other instructions on
reverse side)

Form approved.
Budget Bureau No. 1004-0136
Expires August 31, 1985

30-039-24211

APPLICATION FOR PERMIT TO DRILL, DEEPEN, OR PLUG BACK

1a. TYPE OF WORK

DRILL ☒

DEEPEN ☐

PLUG BACK ☐

b. TYPE OF WELL

OIL
WELL ☐

GAS
WELL ☒

OTHER

SINGLE
ZONE ☐

MULTIPLE
ZONE ☒

2. NAME OF OPERATOR

Union Texas Petroleum

3. ADDRESS OF OPERATOR

375 US Highway 64 Farmington, NM 87401

4. LOCATION OF WELL (Report location clearly and in accordance with any State requirements.)

At surface

885' FSL; 2465' FWL

At proposed prod. zone

same as above

14. DISTANCE IN MILES AND DIRECTION FROM NEAREST TOWN OR POST OFFICE*

22 miles NW of Ojito, New Mexico

15. DISTANCE FROM PROPOSED* LOCATION TO NEAREST PROPERTY OR LEASE LINE, FT.
(Also to nearest drig. unit line, if any, 885' from DU)

16. NO. OF ACRES IN LEASE
2560'

17. NO. OF ACRES ASSIGNED TO THIS WELL

SW/4 160.84 acres

18. DISTANCE FROM PROPOSED LOCATION* TO NEAREST WELL, DRILLING, COMPLETED, OR APPLIED FOR, ON THIS LEASE, FT.

1076'

19. PROPOSED DEPTH
7900'

20. ROTARY OR CABLE TOOLS
Rotary

21. ELEVATIONS (Show whether DF, RT, GR, etc.)
7338' G.L. (graded)

DRILLING OPERATIONS AUTHORIZED ARE
SUBJECT TO COMPLIANCE WITH ATTACHED

22. APPROX. DATE WORK WILL START*
June 1, 1988

23. PROPOSED CASING AND CEMENTING PROGRAM

This action is subject to technical and
procedural review pursuant to 43 CFR 3165.3
and appeal procedures of 43 CFR 3165.4.

SIZE OF HOLE	SIZE OF CASING	WEIGHT PER FOOT	SETTING DEPTH	
12-1/4	9-5/8	32.3	350'	205 sx (242 cu.ft.)
8-3/4	7	23.0	4280'	400 sx (971 cu.ft.)
6-1/4	4-1/2 liner	10.5	4080'-7900'	455 sx (714 cu.ft.)

Union Texas Petroleum wishes to advise we intend to drill a 12-1/4" hole with mud to 350' and set 9-5/8", 32.3#, H-40, ST&C csg to 350', cementing to surface with 205 sx (242 cu.ft.) Cl "B" with 2% CaCl₂ and 1/4# flocele/sk. Wait on cement 12 hours. Nipple up, test BOP. Drill 8-3/4" hole with mud out of surface to 4280'. Set 7", 23.0#, K-55, ST&C intermediate csg to 4280', cementing to surface with 295 sx (847 cu.ft.) 65/35 POZ with 12% gel and 12-1/4# gilsonite/sk, tailed by 105 sx (124 cu.ft.) Cl "B" with 2% CaCl₂.

Drill 6-1/4" hole with natural gas out of intermediate to a TD of 7900'. Log well, run 4-1/2", 10.5#, K-55, ST&C liner from 4080' to 7900'. Cement liner into intermediate csg with 455 sx (714 cu.ft.) 50/50 POZ w 4% gel, 6-1/4# gilsonite/sk, and 10# salt/sk. Following perforation and treatment of the Pictured Cliffs and Gallup formations, standard production equipment will be installed. The well will be dually completed with the zones isolated by a packer. The well will be tied into Gas Company of New Mexico. A cathodic protection groundbed will be drilled on location. This well will be equipped with a thermo-electric generator.

IN ABOVE SPACE DESCRIBE PROPOSED PROGRAM - If proposal is to deepen or plug back, give data on present productive zone and proposed new productive zone. If proposal is to drill or deepen directionally, give pertinent data on subsurface locations and measured and true vertical depths. Give blowout preventer program, if any.

24. SIGNED Robert C. Frank TITLE Permit Coordinator DATE March 1, 1988

(This space for Federal or State office use)

PERMIT NO.

APPROVAL DATE APR 9 1988

APPROVED BY

TITLE

OIL CON. DIV.

DATE

CONDITIONS OF APPROVAL, IF ANY:

DIST. 3

NRMOOD

NOTE: Unorthodox location requested on the NMOCD

NSL # 2484 OK

*See Instructions On Reverse Side

STATE OF NEW MEXICO
ENERGY AND MINERALS DEPARTMENT

OIL CONSERVATION DIVISION

P. O. BOX 2088
SANTA FE, NEW MEXICO 37501

Form C-102
Revised 10-1-79

All distances must be from the outer boundaries of the Section.

Operator UNION TEXAS PETROLEUM			Lease JICARILLA "G"		Well No. 12
Unit Letter N	Section 1	Township 26N	Range 5W	County Rio Arriba	
Actual Footage Location of Well: 885 feet from the South line and 2465 feet from the West line					
Ground Level Elev. 7338	Producing Formation Pictured Cliffs/Gallup		Pool ENT Tapacito/ BS Mesa	Dedicated Acreage SW/4 160.84 Acres	

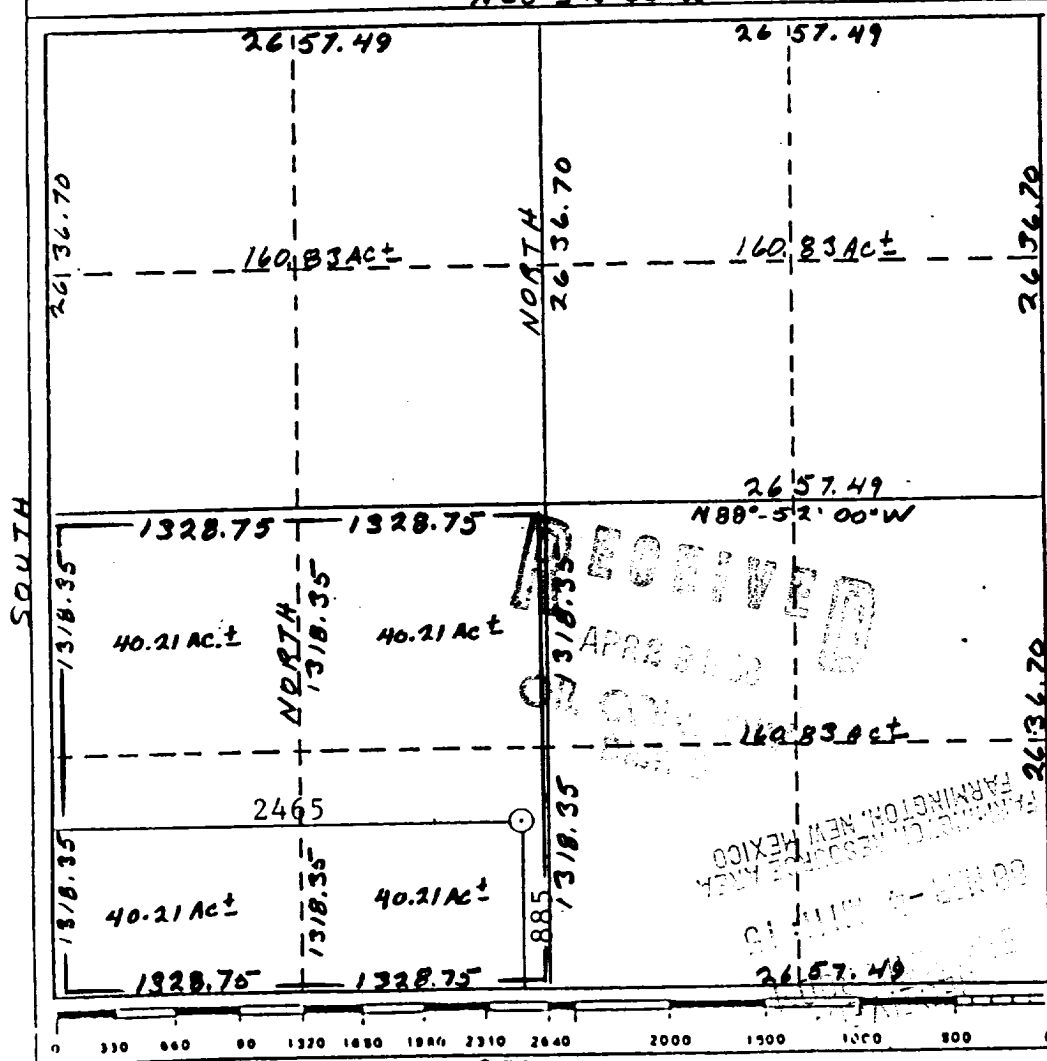
1. Outline the acreage dedicated to the subject well by colored pencil or hatchure marks on the plat below.
2. If more than one lease is dedicated to the well, outline each and identify the ownership thereof (both as to working interest and royalty).
3. If more than one lease of different ownership is dedicated to the well, have the interests of all owners been consolidated by communitization, unitization, force-pooling, etc?

☐ Yes ☐ No If answer is "yes," type of consolidation _____

If answer is "no," list the owners and tract descriptions which have actually been consolidated. (Use reverse side of this form if necessary.) _____

No allowable will be assigned to the well until all interests have been consolidated (by communitization, unitization, forced-pooling, or otherwise) or until a non-standard unit, eliminating such interests, has been approved by the Division.

N88°52'00"W



CERTIFICATION

I hereby certify that the information contained herein is true and complete to the best of my knowledge and belief.

Robert C. Frank

Name
Robert C. Frank
Position
Permit Coordinator
Company
Union Texas Petroleum
Date
February 29, 1988

I hereby certify that the well location shown on this plat was located from field notes of accurate survey made by me or under my supervision and that the same is true and correct to the best of my knowledge and belief.

Cecil B. Tullis

Date Surveyed
November 3, 1987
Registered Land Surveyor

Cecil B. Tullis
Certificate No.
9672

S88°52'00"E

Exhibit I

